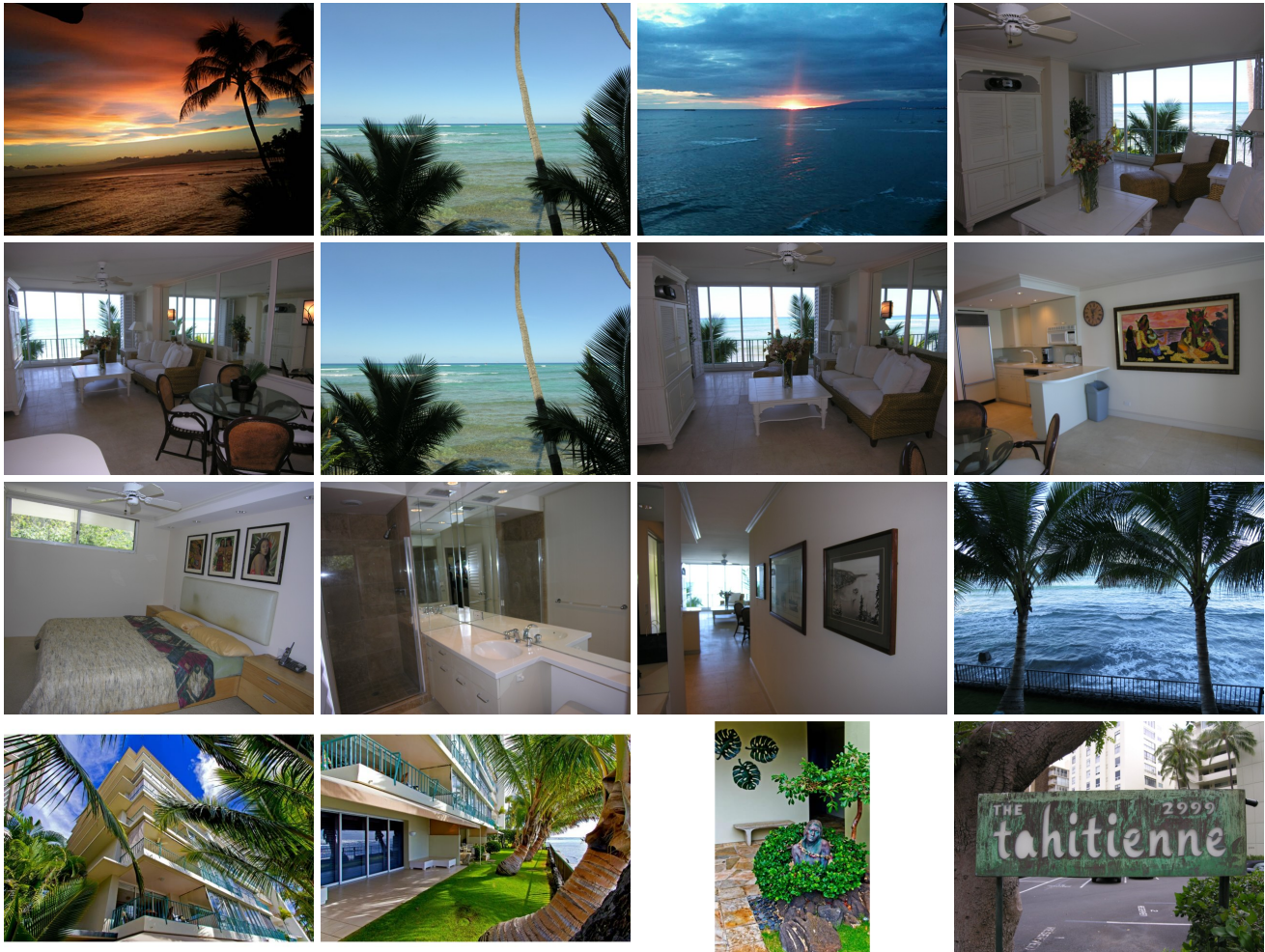


**Tahitienne Inc 2999 Kalakaua Avenue Unit 202, Honolulu 96815 \* Tahitienne Inc \***

**\$995,000**

Beds: <b>1</b>	MLS#: <b>201514610, FS</b>	Year Built: <b>1957</b>
Bath: <b>1/0</b>	Status: <b>Expired</b>	Remodeled:
Living Sq. Ft.: <b>759</b>	List Date & DOM: <b>08-16-2015 &amp; 32</b>	Total Parking: <b>1</b>
Land Sq. Ft.: <b>0</b>	Condition: <b>Above Average</b>	<a href="#">Assessed Value</a>
Lanai Sq. Ft.: <b>0</b>	Frontage: <b>Ocean, Waterfront</b>	Building: <b>\$753,100</b>
Sq. Ft. Other: <b>0</b>	Tax/Year: <b>\$0/2015</b>	Land: <b>\$120,300</b>
Total Sq. Ft. <b>759</b>	Neighborhood: <b>Diamond Head</b>	Total: <b>\$873,400</b>
Maint./Assoc. <b>\$725 / \$0</b>	<a href="#">Flood Zone</a> : <b>Zone VE - Tool</b>	Stories / CPR: <b>One / No</b>
Parking: <b>Assigned, Open - 1</b>	Frontage: <b>Ocean, Waterfront</b>	
<a href="#">Zoning</a> : <b>12 - A-2 Medium Density Apartme</b>	View: <b>City, Coastline, Diamond Head, Mountain, Ocean, Sunset</b>	

**Public Remarks:** Direct Ocean Fee simple One Bedroom One Bath with One Assigned Parking Stall. Portable Air Conditioning is Allowed. Building has applied for permit to allow Washer and Dryer in all apartments. Whales in the Winter from the apartment and Sunsets everyday of the year. Great Surfing spots in front of the building. Four apartments per floor in this small boutique building along the "Gold Coast." Close to the Outrigger Canoe Club, The Elks Club, Michele's Restaurant and the Hau Tree Lanai. Fifteen minute walk into the Excitement of Waikiki and the come back to the Grand Old Neighborhood>  
**Sale Conditions:** None **Schools:** , , \* [Request Showing](#), [Photos](#), [History](#), [Maps](#), [Deed](#), [Watch List](#), [Tax Info](#)



Address	Price	Bd & Bth	Living / Avg.	Land   Avg.	Lanai	Occ.	FL	DOM
<a href="#">2999 Kalakaua Avenue 202</a>	<a href="#">\$995,000</a>	1 & 1/0	759   \$1,311	0   \$inf	0	70%	2	32

Address	Tax   Maint.   Ass.	Assessed Land	Assessed Building	Assessed Total	Ratio	Year & Remodeled
<a href="#">2999 Kalakaua Avenue 202</a>	\$0   \$725   \$0	\$120,300	\$753,100	\$873,400	114%	1957 & NA

[2999 Kalakaua Avenue 202](#) - MLS#: [201514610](#) - Direct Ocean Fee simple One Bedroom One Bath with One Assigned Parking Stall. Portable Air Conditioning is Allowed. Building has applied for permit to allow Washer and Dryer in all apartments. Whales in the Winter from the apartment and Sunsets everyday of the year. Great Surfing spots in front of the building. Four apartments per floor in this small boutique building along the "Gold Coast." Close to the Outrigger Canoe Club, The Elks Club, Michele's Restaurant and the Hau Tree Lanai. Fifteen minute walk into the Excitement of Waikiki and the come back to the Grand Old Neighborhood> **Region:** Diamond Head **Neighborhood:** Diamond Head **Condition:** Above Average **Parking:** Assigned, Open - 1 **Total Parking:** 1 **View:** City, Coastline, Diamond Head, Mountain, Ocean, Sunset **Frontage:** Ocean, Waterfront **Pool:** **Zoning:** 12 - A-2 Medium Density Apartme **Sale Conditions:** None **Schools:** , , \* [Request Showing](#), [Photos](#), [History](#), [Maps](#), [Deed](#), [Watch List](#), [Tax Info](#)

DOM = Days on Market, Occ. = Occupancy, FL = Floor Number