

MONTHLY STATISTICAL REPORT
of Residential Resale Activity on Oahu

APRIL 2001

(Print Date: May 1, 2001)

Prepared by:

**Research Department
Honolulu Board of Realtors®
1136 12th Avenue, Suite 200
Honolulu, Hawaii 96816 USA**

Phone: (808) 732-3000

Fax: (808) 732-3055

E-Mail: hbradmin@hcentral.com

Visit us on the Internet at:

<http://www.hcentral.com>



Honolulu Board of Realtors® Research Department
MONTHLY STATISTICAL REPORT

TABLE OF CONTENTS

SALES

| | |
|---|---|
| Year-to-Date (YTD) Residential Resale Statistics For Oahu by Region | 1 |
| Number of Residential Resales by Month | 2 |
| Residential Property Annual Sales Rate | 3 |
| Median Residential Sales Price by Month | 4 |
| Median Number of Days on the Market for Residential Properties | 5 |
| Monthly and YTD Sales Activity by Neighborhood | 6 |
| Condominium Resale Volume and Median Sales Prices by Land Tenure | 7 |
| YTD Condominium Resale Statistics and Days on Market by Land Tenure | 8 |

NEW LISTINGS

| | |
|--|----|
| Number of New Residential Listings by Month | 9 |
| Median List Price of New Residential Listings by Month | 10 |
| New Listing Activity on Oahu by Neighborhood | 11 |

ACTIVE LISTINGS

| | |
|---|----|
| Inventory of Active Residential Listings by Month | 12 |
| Median Price of Active Residential Listings by Month | 13 |
| Availability of Housing on Oahu by Neighborhood | 14 |
| Available Condominiums on Oahu by Land Tenure | 15 |
| Months of Residential Inventory Remaining by Month | 16 |
| Months of Inventory Remaining by Price Range and Area | 17 |

NON-MLS INFORMATION

| | |
|--|----|
| Weekly Average Yields of Treasury Securities | 18 |
|--|----|

Honolulu Board of Realtors®

Multiple Listing Service

Statistical Summary of RESALES

YEAR-TO-DATE Through April 30, 2001

| NUMBER OF SALES | | | | MEDIAN SALES PRICES | | | AVERAGE SALES PRICES | | | |
|-----------------|------|---------|---------|---------------------|------|---------|----------------------|------|---------|--|
| | | CHANGES | | | | Percent | | | Percent | |
| 2001 | 2000 | Num | Percent | 2001 | 2000 | Change | 2001 | 2000 | Change | |

SINGLE FAMILY HOMES

| | | | | | | | | | | |
|---------------------|-------|-----|-----|--------|-----------|-----------|--------|-----------|-----------|--------|
| OVERALL OAHU | 1,036 | 899 | 137 | 15.2% | \$281,500 | \$295,000 | -4.6% | \$371,261 | \$397,469 | -6.6% |
| Metro Oahu | 123 | 108 | 15 | 13.9% | \$330,000 | \$330,000 | 0.0% | \$404,832 | \$359,069 | 12.7% |
| East Oahu | 197 | 195 | 2 | 1.0% | \$479,000 | \$479,000 | 0.0% | \$664,207 | \$705,333 | -5.8% |
| Windward Oahu | 212 | 204 | 8 | 3.9% | \$335,000 | \$330,500 | 1.4% | \$424,162 | \$386,044 | 9.9% |
| North Shore | 32 | 40 | -8 | -20.0% | \$267,500 | \$329,500 | -18.8% | \$324,138 | \$533,725 | -39.3% |
| Leeward Oahu | 472 | 352 | 120 | 34.1% | \$216,000 | \$218,000 | -0.9% | \$219,678 | \$229,840 | -4.4% |

CONDOMINIUMS

| | | | | | | | | | | |
|---------------------|-------|-------|-----|--------|-----------|-----------|--------|-----------|-----------|-------|
| OVERALL OAHU | 1,316 | 1,142 | 174 | 15.2% | \$130,600 | \$125,000 | 4.5% | \$166,556 | \$167,377 | -0.5% |
| Metro Oahu | 680 | 585 | 95 | 16.2% | \$150,000 | \$145,000 | 3.4% | \$184,293 | \$186,664 | -1.3% |
| East Oahu | 122 | 133 | -11 | -8.3% | \$258,000 | \$239,000 | 7.9% | \$315,419 | \$299,670 | 5.3% |
| Windward Oahu | 100 | 77 | 23 | 29.9% | \$151,200 | \$154,000 | -1.8% | \$157,532 | \$165,864 | -5.0% |
| North Shore | 20 | 9 | 11 | 122.2% | \$148,300 | \$168,000 | -11.7% | \$139,234 | \$152,933 | -9.0% |
| Leeward Oahu | 394 | 338 | 56 | 16.6% | \$81,300 | \$77,500 | 4.9% | \$93,525 | \$82,670 | 13.1% |

ALL SALES: 2,352 2,041 311 15.2%

TOTAL DOLLAR VOLUME OF SALES

| | | SINGLE FAMILY HOMES | | | CONDOMINIUMS | | |
|------------------------------|----------------------|---------------------|---------------|---------|---------------|---------------|---------|
| | | | | Percent | | | Percent |
| | | 2001 | 2000 | Change | 2001 | 2000 | Change |
| TMK Area Designations | OVERALL OAHU: | \$384,626,396 | \$357,324,631 | 7.6% | \$219,187,696 | \$191,144,534 | 14.7% |
| Zone 1 and 2 | Metro Oahu | \$49,794,336 | \$38,779,452 | 28.4% | \$125,319,240 | \$109,198,440 | 14.8% |
| Zone 3 | East Oahu | \$130,848,779 | \$137,539,935 | -4.9% | \$38,481,118 | \$39,856,110 | -3.4% |
| Zone 4 and 5-1 through 5-4 | Windward Oahu | \$89,922,344 | \$78,752,976 | 14.2% | \$15,753,200 | \$12,771,528 | 23.3% |
| Zone 5-5 through 5-9 and 6 | North Shore | \$10,372,416 | \$21,349,000 | -51.4% | \$2,784,680 | \$1,376,397 | 102.3% |
| Zone 7 through 9 | Leeward Oahu | \$103,688,016 | \$80,903,680 | 28.2% | \$36,848,850 | \$27,942,460 | 31.9% |
| TOTAL DOLLAR VOLUME: | | | | | \$603,814,092 | \$548,469,165 | 10.1% |

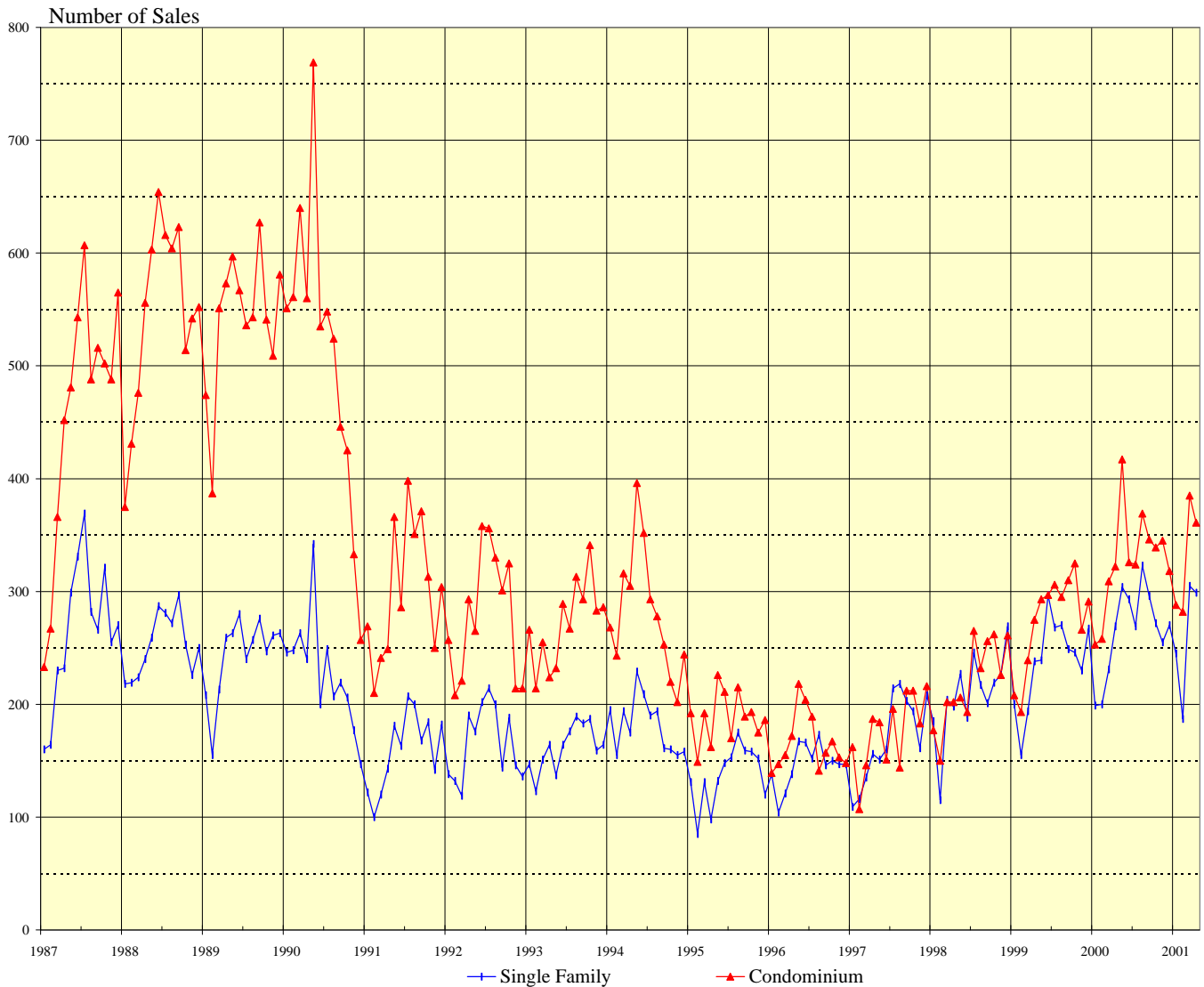
IMPORTANT: All sales information is shown for the month in which properties were reported sold, after closing and recordation. The time delay between the signing of a sales contract and clearing of escrow is nominally between two and four months.

Permission to copy graphs and use data from this copyrighted report is freely granted but full attribution of source is required on all copies and reprints.

SOURCE: Honolulu Board of Realtors® Research Department, compiled from MLS data.

NUMBER OF RESIDENTIAL PROPERTY SALES

OAHU, HAWAII: 1987 - 2001, Monthly

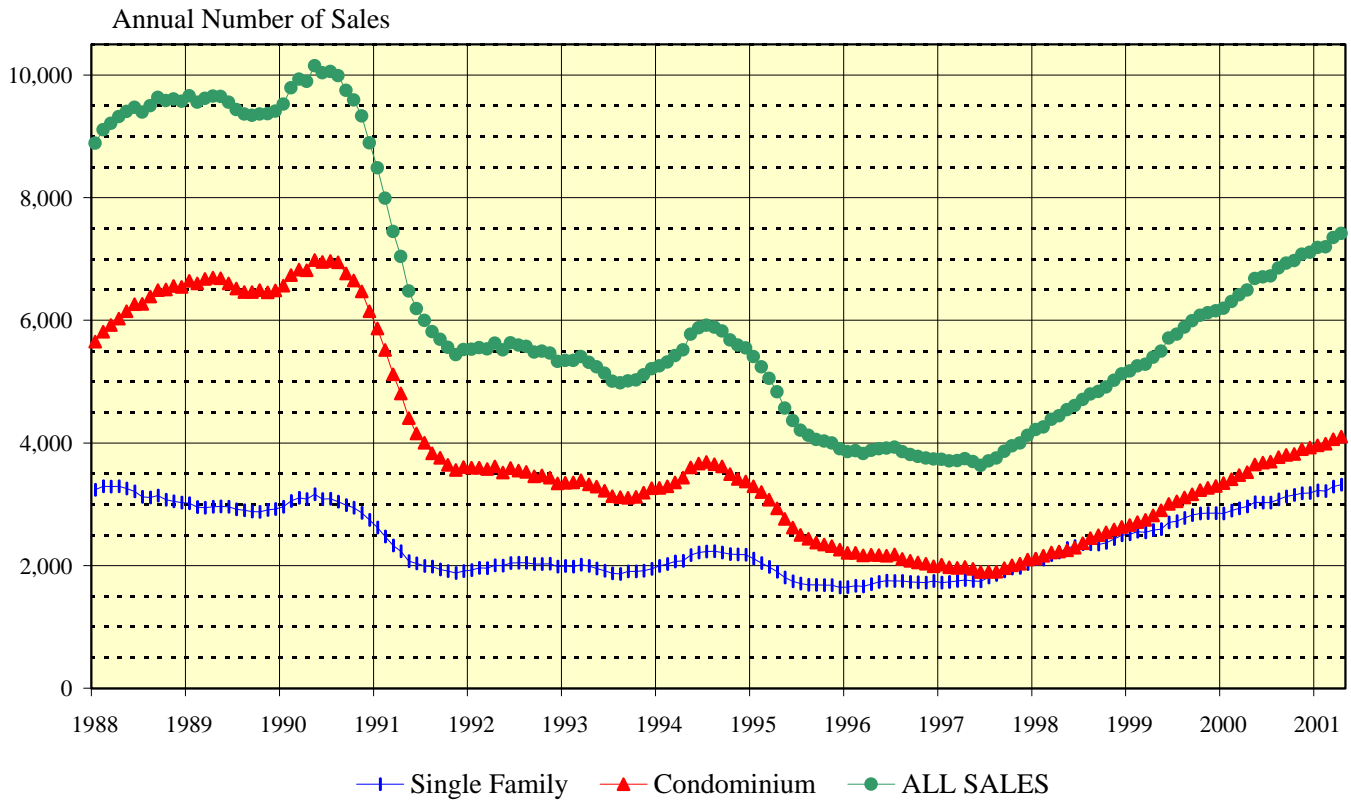


| 1987 - 1996 | | | 1997 | | 1998 | | 1999 | | 2000 | | 2001 | | |
|-------------|-------|-------|-------|---------------|-------|---------------|-------|---------------|-------|---------------|-------|---------------|-------|
| Yr:Hf | SF | Condo | Month | Single Family | Condo | Single Family | Condo | Single Family | Condo | Single Family | Condo | Single Family | Condo |
| 1987 | 3,179 | 5,508 | Jan | 109 | 162 | 185 | 177 | 200 | 208 | 199 | 253 | 245 | 288 |
| 1988 | 3,026 | 6,546 | Feb | 116 | 107 | 115 | 150 | 155 | 193 | 200 | 258 | 187 | 282 |
| 1989 | 2,919 | 6,486 | Mar | 135 | 146 | 204 | 202 | 194 | 239 | 231 | 309 | 305 | 385 |
| 1990 | 2,744 | 6,149 | Apr | 156 | 187 | 198 | 202 | 238 | 275 | 269 | 322 | 299 | 361 |
| 1991 | 1,912 | 3,607 | May | 151 | 184 | 227 | 206 | 239 | 293 | 304 | 417 | | |
| 1992 | 1,985 | 3,342 | Jun | 160 | 151 | 188 | 193 | 297 | 297 | 293 | 326 | | |
| 1993 | 1,944 | 3,263 | Jul | 214 | 196 | 246 | 265 | 268 | 306 | 269 | 324 | | |
| 94:H1 | 1,157 | 1,880 | Aug | 218 | 144 | 217 | 232 | 270 | 295 | 323 | 369 | | |
| 94:H2 | 1,018 | 1,490 | Sep | 203 | 212 | 201 | 256 | 249 | 310 | 296 | 346 | | |
| 95:H1 | 725 | 1,132 | Oct | 194 | 212 | 219 | 262 | 246 | 325 | 272 | 339 | | |
| 95:H2 | 917 | 1,128 | Nov | 161 | 183 | 226 | 226 | 230 | 266 | 255 | 345 | | |
| 96:H1 | 834 | 1,035 | Dec | 208 | 216 | 269 | 261 | 267 | 291 | 270 | 318 | | |
| 96:H2 | 915 | 955 | | | | | | | | | | | |

SOURCE: Honolulu Board of Realtors® Research Department, compiled from MLS data.

OAHU RESIDENTIAL PROPERTY SALES RATE

Annual Unit Sales Rates Based on Prior 12 Months



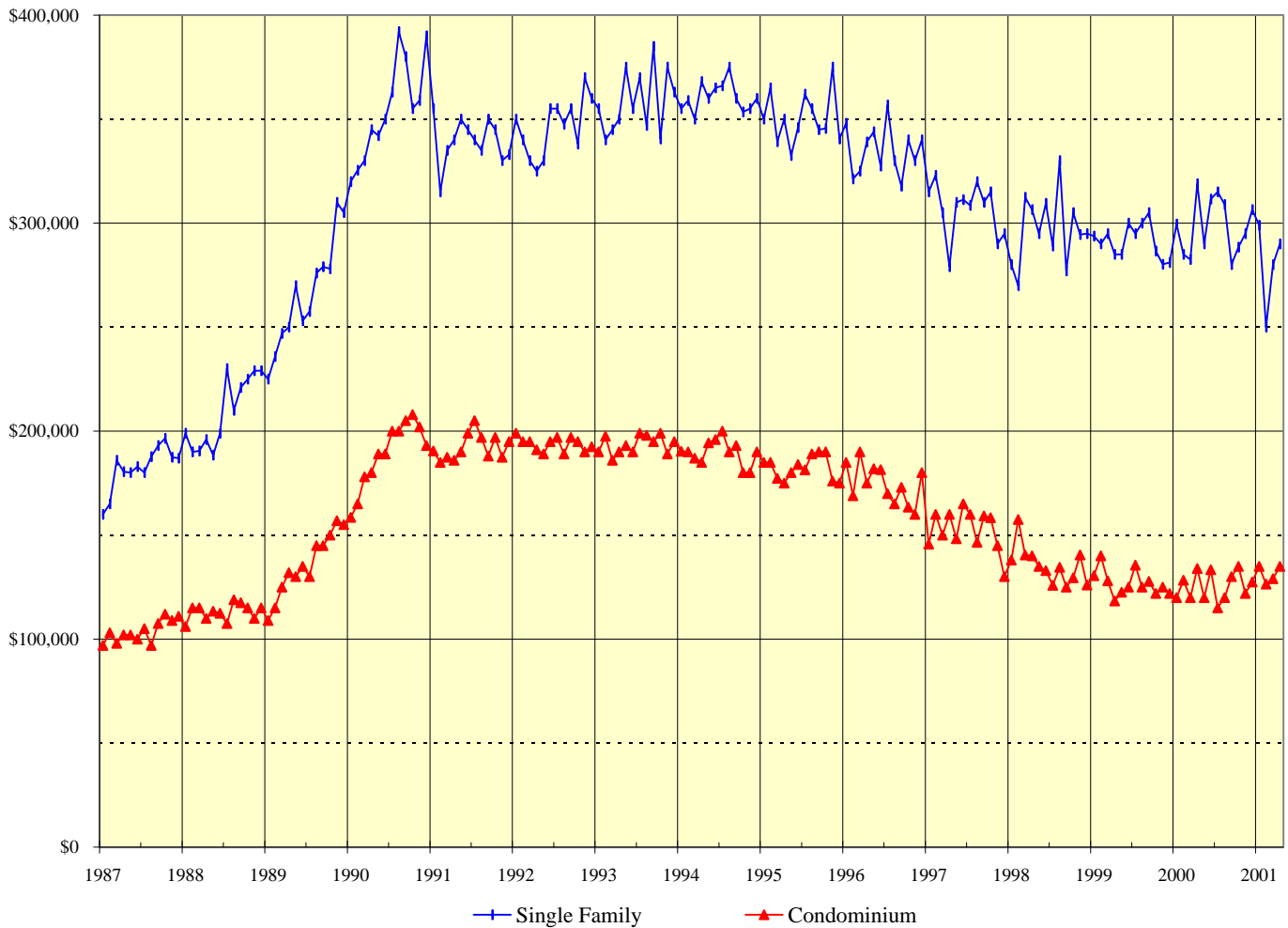
This chart is designed to more clearly show the general direction of the residential resales market on Oahu. It eliminates seasonal patterns that make monthly data difficult to read and interpret. Each point on this chart represents the total sales for the twelve months that end with the marked month. For example, the data points shown for December 2000 denote the total sales activity for the period January through December 2000. Similarly, the data points presented for June 2000 are the total sales for the 12-month period July 1999 through June 2000.

The points on this chart will change direction (i.e., go up or down) each month based on whether the newest month's sales activity is higher or lower than during the same month in the prior year. For example, if the sales reported for June 2000 are higher than those achieved in June 1999, the data points added to the chart for June 2000 will be higher than the May 2000 points.

SOURCE: Honolulu Board of Realtors® Research Department, compiled from MLS data.

MEDIAN SALES PRICES OF RESIDENTIAL PROPERTIES

OAHU, HAWAII: 1987 - 2001, Monthly



| 1987 - 1997 | | |
|-------------|-----------|-----------|
| Yr:Hf | SF | Condo |
| 1987 | \$185,000 | \$104,500 |
| 1988 | \$210,000 | \$114,000 |
| 1989 | \$270,000 | \$135,500 |
| 1990 | \$352,000 | \$187,000 |
| 1991 | \$340,000 | \$192,000 |
| 1992 | \$349,000 | \$193,000 |
| 1993 | \$358,500 | \$193,000 |
| 1994 | \$360,000 | \$190,000 |
| 95:H1 | \$345,000 | \$180,000 |
| 95:H2 | \$351,000 | \$183,500 |
| 96:H1 | \$334,100 | \$180,400 |
| 96:H2 | \$336,300 | \$168,600 |
| 97:H1 | \$305,000 | \$149,000 |
| 97:H2 | \$308,000 | \$148,000 |

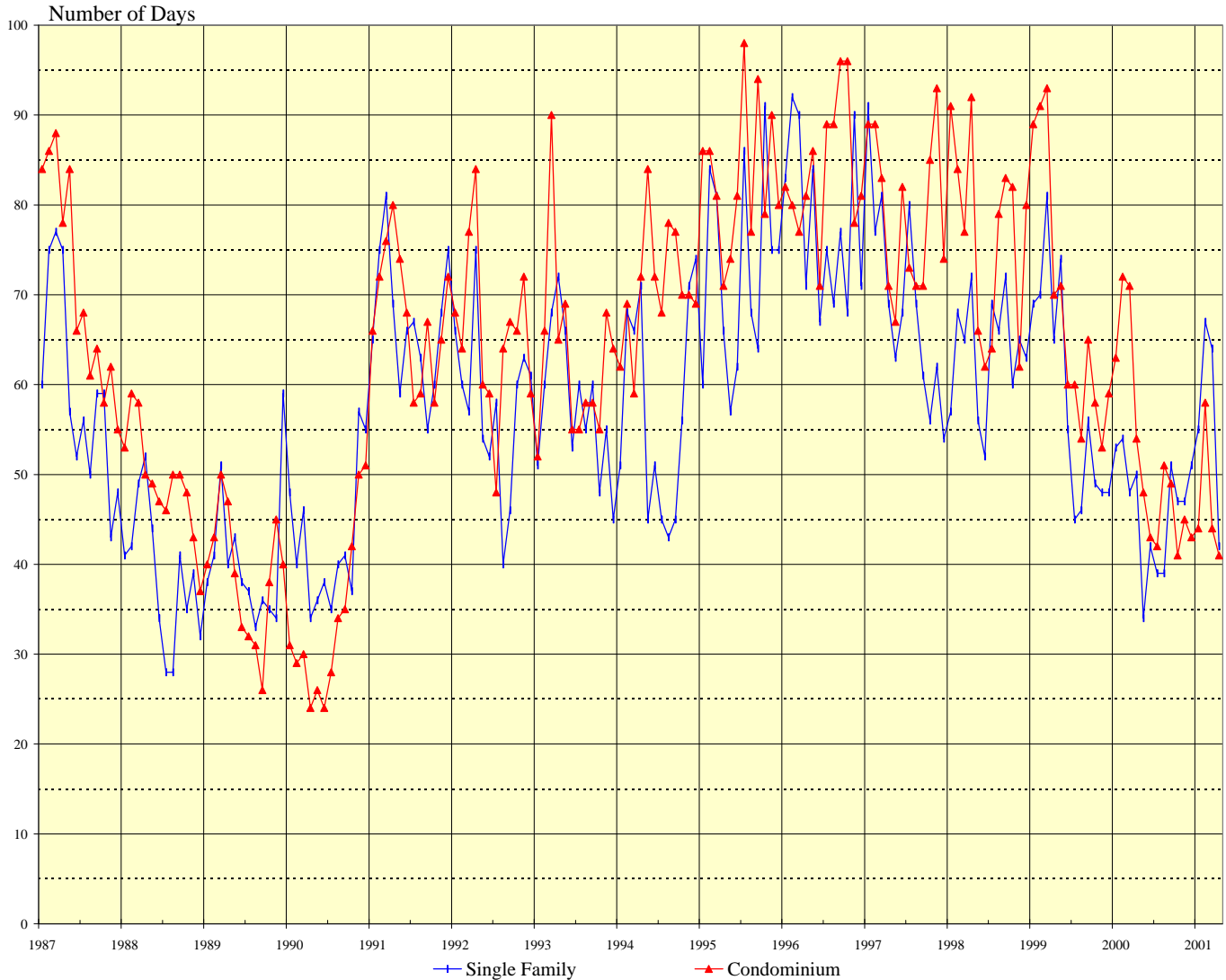
| Month | 1998 | | 1999 | | 2000 | | 2001 | |
|-------|---------------|-----------|---------------|-----------|---------------|-----------|---------------|-----------|
| | Single Family | Condo | Single Family | Condo | Single Family | Condo | Single Family | Condo |
| Jan | \$280,000 | \$138,000 | \$293,800 | \$130,500 | \$299,500 | \$120,000 | \$299,000 | \$135,000 |
| Feb | \$270,000 | \$157,500 | \$290,000 | \$140,000 | \$285,000 | \$128,300 | \$250,000 | \$126,500 |
| Mar | \$312,500 | \$140,500 | \$295,000 | \$128,000 | \$282,500 | \$120,000 | \$280,000 | \$129,000 |
| Apr | \$306,500 | \$140,000 | \$285,000 | \$118,400 | \$319,000 | \$134,000 | \$290,000 | \$135,000 |
| May | \$295,000 | \$135,000 | \$285,000 | \$122,500 | \$290,000 | \$120,000 | | |
| Jun | \$309,500 | \$133,000 | \$300,000 | \$125,000 | \$311,500 | \$133,400 | | |
| Jul | \$289,000 | \$125,900 | \$295,000 | \$135,500 | \$315,000 | \$115,000 | | |
| Aug | \$330,000 | \$134,500 | \$300,000 | \$125,000 | \$309,000 | \$120,000 | | |
| Sep | \$277,000 | \$125,000 | \$305,000 | \$127,800 | \$280,000 | \$130,000 | | |
| Oct | \$305,000 | \$129,500 | \$286,500 | \$122,000 | \$288,500 | \$135,000 | | |
| Nov | \$294,500 | \$140,500 | \$280,200 | \$125,000 | \$295,000 | \$122,000 | | |
| Dec | \$295,000 | \$126,000 | \$281,000 | \$122,000 | \$306,500 | \$127,500 | | |

SOURCE: Honolulu Board of Realtors® Research Department, compiled from MLS data.

MEDIAN NUMBER OF DAYS ON THE MARKET

Days between Listing Date and Contract Date

OAHU, HAWAII: 1987 - 2001, Monthly



| 1987 - 1996 | | | 1997 | | 1998 | | 1999 | | 2000 | | 2001 | | |
|-------------|----|-------|-------|---------------|-------|---------------|-------|---------------|-------|---------------|-------|---------------|-------|
| Yr:Hf | SF | Condo | Month | Single Family | Condo | Single Family | Condo | Single Family | Condo | Single Family | Condo | Single Family | Condo |
| 1987 | 59 | 71 | Jan | 91 | 89 | 57 | 91 | 69 | 89 | 53 | 63 | 55 | 44 |
| 1988 | 39 | 49 | Feb | 77 | 89 | 68 | 84 | 70 | 91 | 54 | 72 | 67 | 58 |
| 1989 | 40 | 39 | Mar | 81 | 83 | 65 | 77 | 81 | 93 | 48 | 71 | 64 | 44 |
| 1990 | 42 | 34 | Apr | 69 | 71 | 72 | 92 | 65 | 70 | 50 | 54 | 42 | 41 |
| 1991 | 67 | 68 | May | 63 | 67 | 56 | 66 | 74 | 71 | 34 | 48 | | |
| 1992 | 58 | 66 | Jun | 68 | 82 | 52 | 62 | 55 | 60 | 42 | 43 | | |
| 1993 | 58 | 63 | Jul | 80 | 73 | 69 | 64 | 45 | 60 | 39 | 42 | | |
| 94:H1 | 59 | 70 | Aug | 69 | 71 | 66 | 79 | 46 | 54 | 39 | 51 | | |
| 94:H2 | 56 | 72 | Sep | 61 | 71 | 72 | 83 | 56 | 65 | 51 | 49 | | |
| 95:H1 | 68 | 80 | Oct | 56 | 85 | 60 | 82 | 49 | 58 | 47 | 41 | | |
| 95:H2 | 77 | 86 | Nov | 62 | 93 | 65 | 62 | 48 | 53 | 47 | 45 | | |
| 96:H1 | 81 | 80 | Dec | 54 | 74 | 63 | 80 | 48 | 59 | 51 | 43 | | |
| 96:H2 | 75 | 88 | | | | | | | | | | | |

SOURCE: Honolulu Board of Realtors® Research Department, compiled from MLS data.

Monthly and Y-T-D Resales Activity by Neighborhood Groups

Comparisons Between APRIL 2001 and 2000

SINGLE FAMILY HOMES

| Neighborhood Group | 2001 | | 2000 | | Month-to-Month | | 2001 | | 2000 | | Year-to-Year | |
|-----------------------|---------------|--------------------|---------------|--------------------|--------------------|--------------|--------------|--------------------|--------------|--------------------|--------------------|--------------|
| | Monthly Sales | | Monthly Sales | | Percentage Changes | | YEAR-TO-DATE | | YEAR-TO-DATE | | Percentage Changes | |
| | Num Sold | Median Sales Price | Num Sold | Median Sales Price | Number Sold | Median Price | Num Sold | Median Sales Price | Num Sold | Median Sales Price | Number Sold | Median Price |
| Moanalua-Kalihi | 24 | \$257,500 | 10 | \$190,500 | 140.0% | 35.2% | 61 | \$266,700 | 51 | \$230,000 | 19.6% | 16.0% |
| Honolulu | 15 | \$465,000 | 16 | \$441,500 | -6.3% | 5.3% | 62 | \$425,000 | 57 | \$420,000 | 8.8% | 1.2% |
| Kapahulu-Diamond Head | 12 | \$372,500 | 18 | \$333,500 | -33.3% | 11.7% | 55 | \$370,000 | 47 | \$319,000 | 17.0% | 16.0% |
| Waialae-Kahala | 8 | \$1,044,000 | 13 | \$735,000 | -38.5% | 42.0% | 34 | \$954,000 | 42 | \$797,500 | -19.0% | 19.6% |
| Aina Haina-Kuliouou | 10 | \$675,000 | 10 | \$647,500 | 0.0% | 4.2% | 32 | \$466,500 | 27 | \$700,000 | 18.5% | -33.4% |
| Hawaii Kai | 24 | \$472,300 | 24 | \$465,000 | 0.0% | 1.6% | 76 | \$477,000 | 79 | \$469,000 | -3.8% | 1.7% |
| Kailua-Waimanalo | 33 | \$365,000 | 45 | \$345,000 | -26.7% | 5.8% | 109 | \$385,000 | 111 | \$350,000 | -1.8% | 10.0% |
| Kaneohe | 17 | \$308,000 | 16 | \$352,500 | 6.3% | -12.6% | 65 | \$305,000 | 57 | \$337,500 | 14.0% | -9.6% |
| Windward Coast | 11 | \$329,900 | 8 | \$317,000 | 37.5% | 4.1% | 38 | \$293,500 | 36 | \$286,500 | 5.6% | 2.4% |
| North Shore | 10 | \$187,000 | 13 | \$399,000 | -23.1% | -53.1% | 32 | \$267,500 | 40 | \$329,500 | -20.0% | -18.8% |
| Wahiawa | 3 | \$185,000 | 2 | \$234,500 | 50.0% | -21.1% | 24 | \$184,000 | 11 | \$196,000 | 118.2% | -6.1% |
| Mililani | 18 | \$266,500 | 16 | \$260,000 | 12.5% | 2.5% | 62 | \$265,000 | 47 | \$255,500 | 31.9% | 3.7% |
| Makaha-Nanakuli | 29 | \$131,000 | 14 | \$126,000 | 107.1% | 4.0% | 86 | \$115,000 | 48 | \$135,000 | 79.2% | -14.8% |
| Ewa Plain | 30 | \$220,000 | 20 | \$203,500 | 50.0% | 8.1% | 107 | \$207,000 | 73 | \$200,000 | 46.6% | 3.5% |
| Makakilo | 8 | \$305,500 | 6 | \$237,500 | 33.3% | 28.6% | 25 | \$241,000 | 25 | \$203,000 | 0.0% | 18.7% |
| Waipahu | 28 | \$230,000 | 18 | \$212,800 | 55.6% | 8.1% | 103 | \$219,000 | 65 | \$216,000 | 58.5% | 1.4% |
| Pearl City-Aiea | 19 | \$282,000 | 20 | \$289,500 | -5.0% | -2.6% | 65 | \$280,000 | 83 | \$275,000 | -21.7% | 1.8% |
| OVERALL OAHU | 299 | \$290,000 | 269 | \$319,000 | 11.2% | -9.1% | 1,036 | \$281,500 | 899 | \$295,000 | 15.2% | -4.6% |

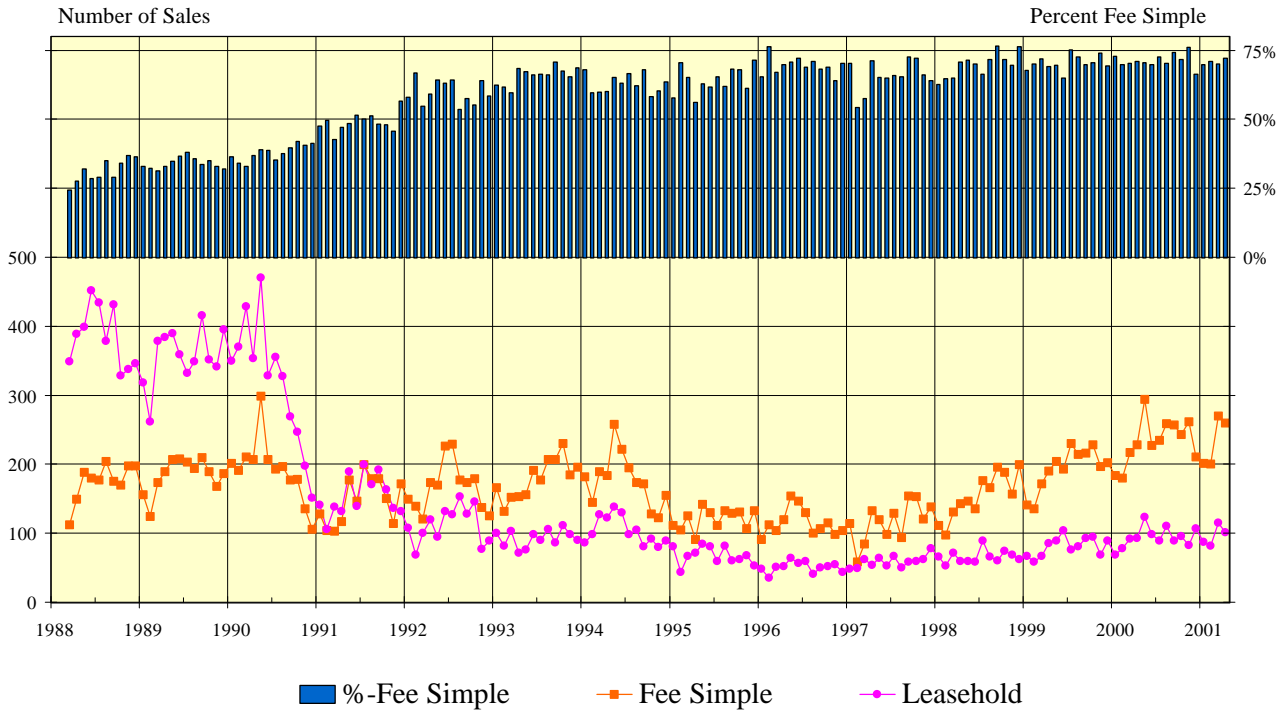
CONDOMINIUMS

| Neighborhood Group | 2001 | | 2000 | | Month-to-Month | | 2001 | | 2000 | | Year-to-Year | |
|---------------------|---------------|--------------------|---------------|--------------------|--------------------|--------------|--------------|--------------------|--------------|--------------------|--------------------|--------------|
| | Monthly Sales | | Monthly Sales | | Percentage Changes | | YEAR-TO-DATE | | YEAR-TO-DATE | | Percentage Changes | |
| | Num Sold | Median Sales Price | Num Sold | Median Sales Price | Number Sold | Median Price | Num Sold | Median Sales Price | Num Sold | Median Sales Price | Number Sold | Median Price |
| Moanalua-Salt Lake | 17 | \$140,000 | 10 | \$118,800 | 70.0% | 17.8% | 68 | \$130,000 | 45 | \$118,000 | 51.1% | 10.2% |
| Kalihi-Palama | 17 | \$77,000 | 11 | \$89,000 | 54.5% | -13.5% | 52 | \$80,000 | 36 | \$85,000 | 44.4% | -5.9% |
| Downtown-Nuuanu | 17 | \$186,000 | 11 | \$118,000 | 54.5% | 57.6% | 70 | \$180,000 | 75 | \$202,000 | -6.7% | -10.9% |
| Ala Moana-Kakaako | 22 | \$150,000 | 17 | \$145,000 | 29.4% | 3.4% | 79 | \$250,000 | 67 | \$207,000 | 17.9% | 20.8% |
| Waikiki | 75 | \$163,000 | 58 | \$133,000 | 29.3% | 22.6% | 263 | \$152,000 | 221 | \$135,000 | 19.0% | 12.6% |
| Makiki-Moilili | 49 | \$157,000 | 48 | \$168,000 | 2.1% | -6.5% | 148 | \$149,500 | 141 | \$155,000 | 5.0% | -3.5% |
| Kapahulu-Kuliouou | 14 | \$327,000 | 27 | \$247,000 | -48.1% | 32.4% | 67 | \$275,000 | 68 | \$250,000 | -1.5% | 10.0% |
| Hawaii Kai | 13 | \$230,000 | 16 | \$232,000 | -18.8% | -0.9% | 55 | \$240,000 | 65 | \$230,000 | -15.4% | 4.3% |
| Kailua-Waimanalo | 5 | \$184,000 | 12 | \$161,500 | -58.3% | 13.9% | 43 | \$172,000 | 36 | \$154,500 | 19.4% | 11.3% |
| Kaneohe | 9 | \$135,000 | 15 | \$154,900 | -40.0% | -12.8% | 50 | \$137,500 | 40 | \$152,500 | 25.0% | -9.8% |
| Windward Coast | 1 | \$44,000 | 0 | N/A | N/A | N/A | 7 | \$120,000 | 1 | \$92,000 | 600.0% | 30.4% |
| North Shore | 10 | \$174,000 | 4 | \$176,500 | 150.0% | -1.4% | 20 | \$148,300 | 9 | \$168,000 | 122.2% | -11.7% |
| Wahiawa | 3 | \$42,000 | 3 | \$38,000 | 0.0% | 10.5% | 7 | \$42,000 | 13 | \$38,000 | -46.2% | 10.5% |
| Mililani | 30 | \$107,500 | 22 | \$113,000 | 36.4% | -4.9% | 91 | \$102,000 | 79 | \$90,000 | 15.2% | 13.3% |
| Makaha-Nanakuli | 12 | \$66,500 | 20 | \$31,500 | -40.0% | 111.1% | 43 | \$46,000 | 58 | \$31,500 | -25.9% | 46.0% |
| Ewa Plain | 15 | \$80,000 | 14 | \$77,000 | 7.1% | 3.9% | 63 | \$87,500 | 39 | \$82,400 | 61.5% | 6.2% |
| Makakilo | 9 | \$79,800 | 3 | \$98,000 | 200.0% | -18.6% | 25 | \$89,100 | 26 | \$96,500 | -3.8% | -7.7% |
| Waipahu | 13 | \$113,000 | 15 | \$100,000 | -13.3% | 13.0% | 61 | \$95,000 | 53 | \$77,000 | 15.1% | 23.4% |
| Pearl City-Aiea | 30 | \$71,900 | 16 | \$73,000 | 87.5% | -1.5% | 104 | \$70,000 | 70 | \$82,300 | 48.6% | -14.9% |
| OVERALL OAHU | 361 | \$135,000 | 322 | \$134,000 | 12.1% | 0.7% | 1,316 | \$130,600 | 1,142 | \$125,000 | 15.2% | 4.5% |

SOURCE: Honolulu Board of Realtors® Research Department, compiled from MLS data.

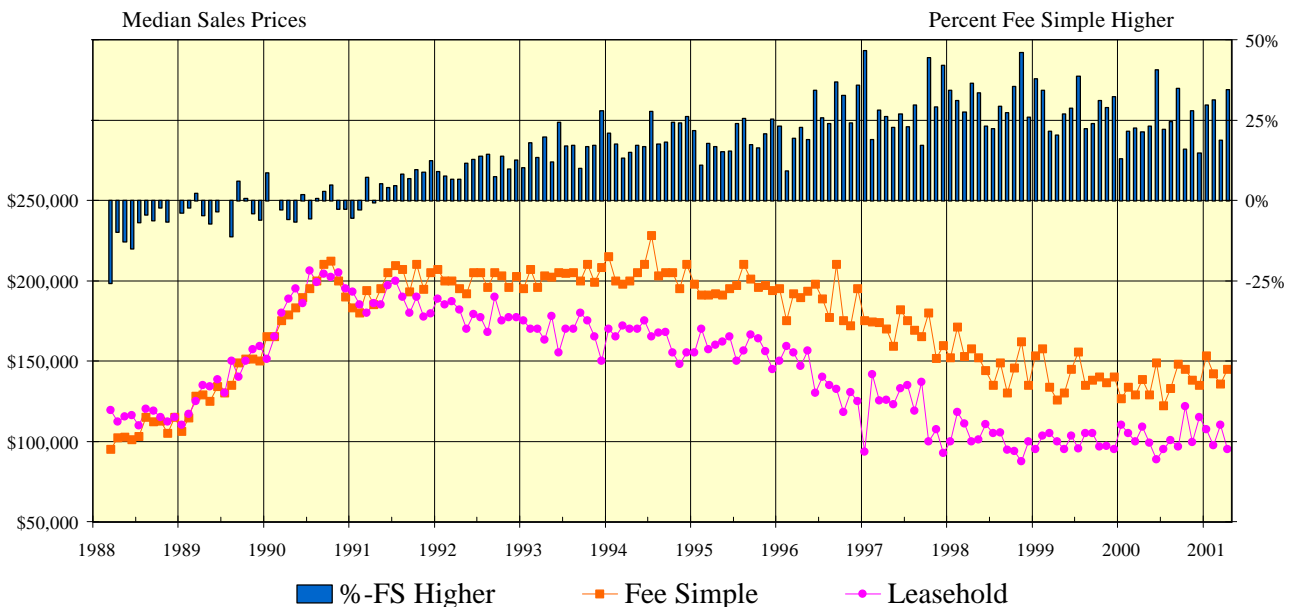
CONDOMINIUM SALES VOLUME

LEASEHOLD vs FEE SIMPLE, OAHU: 1988 - 2001, Monthly



CONDOMINIUM MEDIAN SALES PRICES

LEASEHOLD vs FEE SIMPLE, OAHU: 1988 - 2001, Monthly



SOURCE: Honolulu Board of Realtors® Research Department, compiled from MLS data.

Statistical Summary of CONDOMINIUM RESALES

YEAR-TO-DATE Through April 30, 2001

| NUMBER OF SALES | | | | MEDIAN SALES PRICE | | | AVERAGE SALES PRICE | | |
|-----------------|------|---------|---------|--------------------|------|---------|---------------------|------|---------|
| | | CHANGES | | | | Percent | | | Percent |
| 2001 | 2000 | Num | Percent | 2001 | 2000 | Change | 2001 | 2000 | Change |

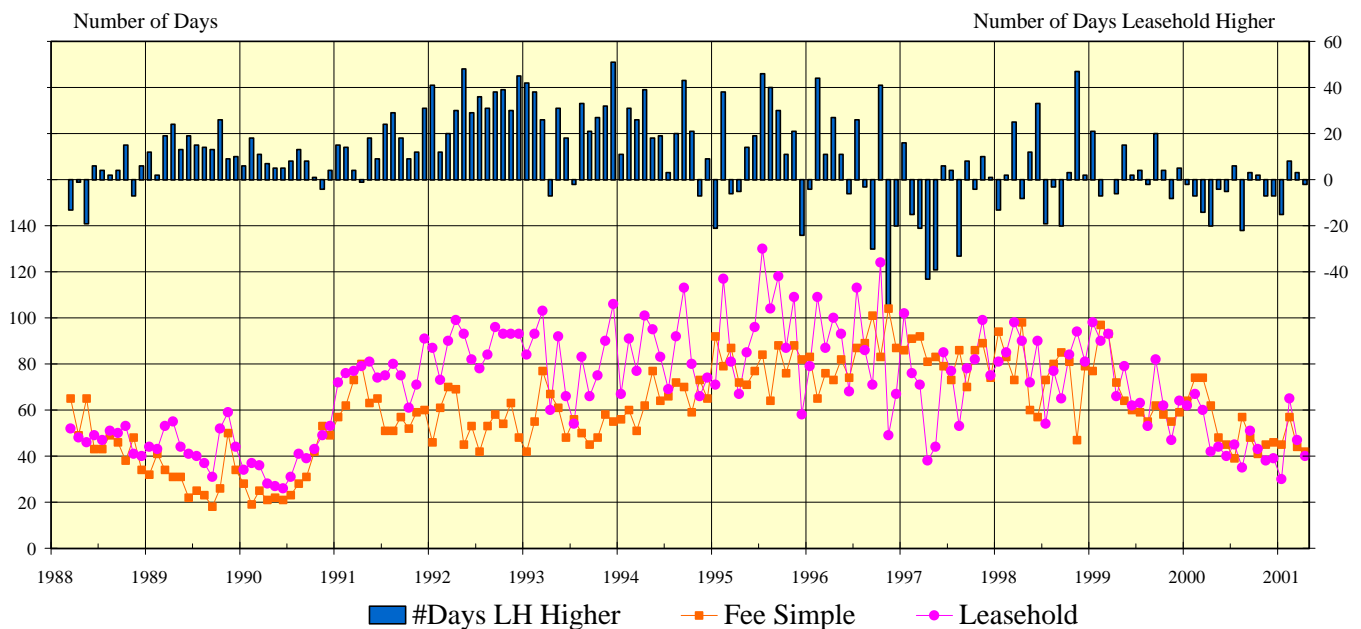
| FEE SIMPLE CONDOMINIUMS | | | | | | | | | | |
|-------------------------|------------|------------|------------|--------------|------------------|------------------|-------------|------------------|------------------|-------------|
| OVERALL OAHU | 931 | 809 | 122 | 15.1% | \$142,000 | \$134,000 | 6.0% | \$180,328 | \$177,922 | 1.4% |
| Metro Oahu | 455 | 376 | 79 | 21.0% | \$170,000 | \$165,000 | 3.0% | \$210,931 | \$213,433 | -1.2% |
| East Oahu | 76 | 92 | -16 | -17.4% | \$286,000 | \$241,700 | 18.3% | \$348,956 | \$307,969 | 13.3% |
| Windward Oahu | 63 | 50 | 13 | 26.0% | \$184,000 | \$180,000 | 2.2% | \$183,712 | \$193,879 | -5.2% |
| North Shore | 11 | 4 | 7 | 175.0% | \$60,000 | \$176,500 | -66.0% | \$122,470 | \$150,000 | -18.4% |
| Leeward Oahu | 326 | 287 | 39 | 13.6% | \$87,300 | \$81,000 | 7.8% | \$99,602 | \$87,321 | 14.1% |

| LEASEHOLD CONDOMINIUMS | | | | | | | | | | |
|------------------------|------------|------------|-----------|--------------|------------------|------------------|--------------|------------------|------------------|--------------|
| OVERALL OAHU | 385 | 332 | 53 | 16.0% | \$104,000 | \$105,200 | -1.1% | \$133,251 | \$141,795 | -6.0% |
| Metro Oahu | 225 | 209 | 16 | 7.7% | \$110,000 | \$112,000 | -1.8% | \$130,425 | \$138,506 | -5.8% |
| East Oahu | 46 | 41 | 5 | 12.2% | \$172,500 | \$226,000 | -23.7% | \$260,011 | \$281,046 | -7.5% |
| Windward Oahu | 37 | 27 | 10 | 37.0% | \$100,000 | \$95,000 | 5.3% | \$112,957 | \$113,985 | -0.9% |
| North Shore | 9 | 5 | 4 | 80.0% | \$149,500 | \$135,000 | 10.7% | \$159,722 | \$155,280 | 2.9% |
| Leeward Oahu | 68 | 50 | 18 | 36.0% | \$54,500 | \$45,500 | 19.8% | \$64,393 | \$55,025 | 17.0% |

CONDOMINIUM DAYS ON MARKET

between Listing Date and Contract Date

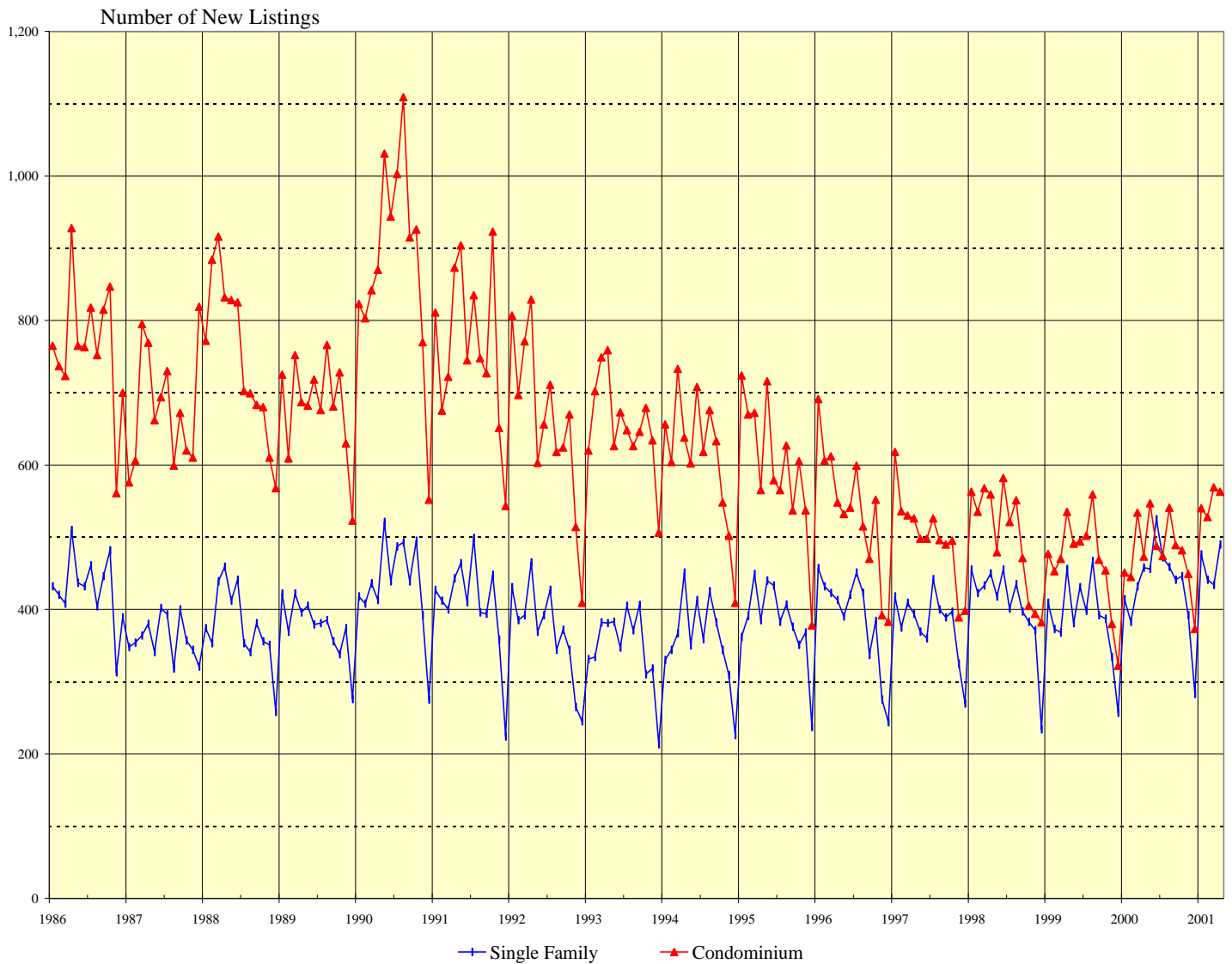
LEASEHOLD vs FEE SIMPLE, OAHU: 1988 - 2001, Monthly



SOURCE: Honolulu Board of Realtors® Research Department, compiled from MLS data.

NUMBER OF NEW RESIDENTIAL LISTINGS

OAHU, HAWAII: 1986 - 2001, Monthly

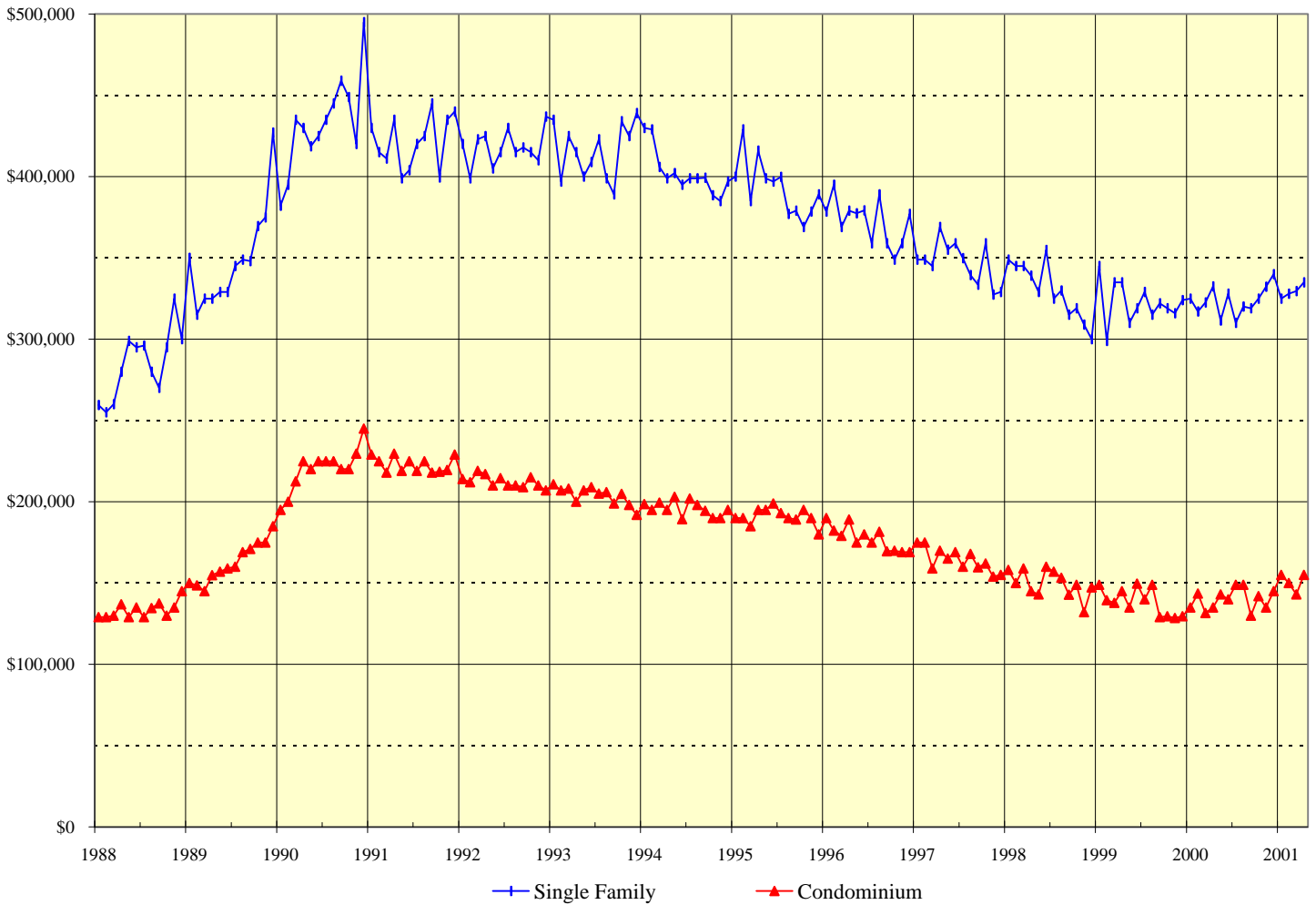


| 1987 - 1996 | | | 1997 | | 1998 | | 1999 | | 2000 | | 2001 | | |
|-------------|-------|--------|-------|--------|--------|--------|--------|--------|--------|--------|--------|--------|--------|
| Yr:Hf | SF | Condo | Month | Single | Condo | Single | Condo | Single | Condo | Single | Condo | Single | Condo |
| | | | | Family | Family | Family | Family | Family | Family | Family | Family | Family | Family |
| 1986 | 5,134 | 9,174 | | | | | | | | | | | |
| 1987 | 4,322 | 8,152 | | | | | | | | | | | |
| 1988 | 4,518 | 8,999 | Jan | 418 | 618 | 455 | 563 | 409 | 477 | 414 | 451 | 476 | 540 |
| 1989 | 4,503 | 8,177 | Feb | 375 | 536 | 423 | 535 | 373 | 453 | 383 | 445 | 441 | 528 |
| 1990 | 5,216 | 10,588 | Mar | 409 | 530 | 433 | 568 | 368 | 470 | 432 | 534 | 434 | 569 |
| 1991 | 4,875 | 9,157 | Apr | 394 | 526 | 450 | 559 | 456 | 535 | 458 | 473 | 490 | 563 |
| 1992 | 4,431 | 7,909 | May | 369 | 498 | 418 | 479 | 381 | 491 | 456 | 547 | | |
| 1993 | 4,181 | 7,868 | Jun | 360 | 498 | 455 | 582 | 431 | 494 | 525 | 488 | | |
| 94:H1 | 2,255 | 3,941 | Jul | 442 | 526 | 401 | 521 | 398 | 502 | 472 | 474 | | |
| 94:H2 | 2,045 | 3,386 | Aug | 400 | 496 | 435 | 551 | 467 | 559 | 459 | 541 | | |
| 95:H1 | 2,460 | 3,926 | Sep | 389 | 490 | 397 | 471 | 392 | 469 | 441 | 489 | | |
| 95:H2 | 2,122 | 3,249 | Oct | 397 | 495 | 383 | 405 | 387 | 454 | 446 | 482 | | |
| 95:H1 | 2,535 | 3,530 | Nov | 325 | 389 | 371 | 394 | 334 | 380 | 392 | 449 | | |
| 95:H2 | 2,114 | 2,911 | Dec | 270 | 398 | 234 | 382 | 257 | 322 | 283 | 373 | | |

SOURCE: Honolulu Board of Realtors® Research Department, compiled from MLS data.

MEDIAN LIST PRICES OF NEW RESIDENTIAL LISTINGS

OAHU, HAWAII: 1988 - 2001, Monthly



| 1988 - 1997 | | |
|-------------|-----------|-----------|
| Yr:Hf | SF | Condo |
| 1988 | \$284,000 | \$133,800 |
| 1989 | \$349,000 | \$162,500 |
| 1990 | \$429,000 | \$220,000 |
| 1991 | \$421,000 | \$222,000 |
| 1992 | \$418,000 | \$213,000 |
| 1993 | \$416,000 | \$204,000 |
| 94:H1 | \$415,000 | \$195,900 |
| 94:H2 | \$400,000 | \$194,000 |
| 95:H1 | \$404,300 | \$192,000 |
| 95:H2 | \$382,000 | \$189,500 |
| 96:H1 | \$379,600 | \$182,500 |
| 96:H2 | \$365,000 | \$172,300 |
| 97:H1 | \$350,000 | \$169,000 |
| 97:H2 | \$349,000 | \$161,000 |

| | 1998 | | 1999 | | 2000 | | 2001 | |
|-------|-----------|-----------|-----------|-----------|-----------|-----------|-----------|-----------|
| | Single | | Single | | Single | | Single | |
| Month | Family | Condo | Family | Condo | Family | Condo | Family | Condo |
| Jan | \$349,000 | \$158,000 | \$345,000 | \$149,000 | \$325,000 | \$135,000 | \$325,000 | \$155,000 |
| Feb | \$345,000 | \$150,000 | \$299,000 | \$139,500 | \$317,000 | \$143,500 | \$328,000 | \$150,000 |
| Mar | \$345,000 | \$159,000 | \$335,000 | \$137,800 | \$322,500 | \$131,500 | \$329,500 | \$143,000 |
| Apr | \$339,000 | \$145,000 | \$335,000 | \$145,000 | \$332,500 | \$135,000 | \$335,000 | \$155,000 |
| May | \$329,000 | \$143,000 | \$310,000 | \$134,900 | \$311,500 | \$143,000 | | |
| Jun | \$354,900 | \$160,000 | \$319,000 | \$149,700 | \$328,000 | \$140,000 | | |
| Jul | \$325,000 | \$157,000 | \$329,000 | \$140,000 | \$310,000 | \$149,000 | | |
| Aug | \$330,000 | \$153,300 | \$315,000 | \$149,000 | \$320,000 | \$149,000 | | |
| Sep | \$315,000 | \$142,900 | \$322,000 | \$129,000 | \$319,000 | \$130,000 | | |
| Oct | \$319,000 | \$149,000 | \$319,000 | \$129,500 | \$325,000 | \$142,000 | | |
| Nov | \$309,000 | \$132,000 | \$316,000 | \$128,500 | \$332,200 | \$135,000 | | |
| Dec | \$300,000 | \$147,300 | \$324,000 | \$129,500 | \$339,900 | \$145,000 | | |

SOURCE: Honolulu Board of Realtors® Research Department, compiled from MLS data.

New Listing Activity by Neighborhood Groups

Comparisons Between APRIL 2001 and 2000

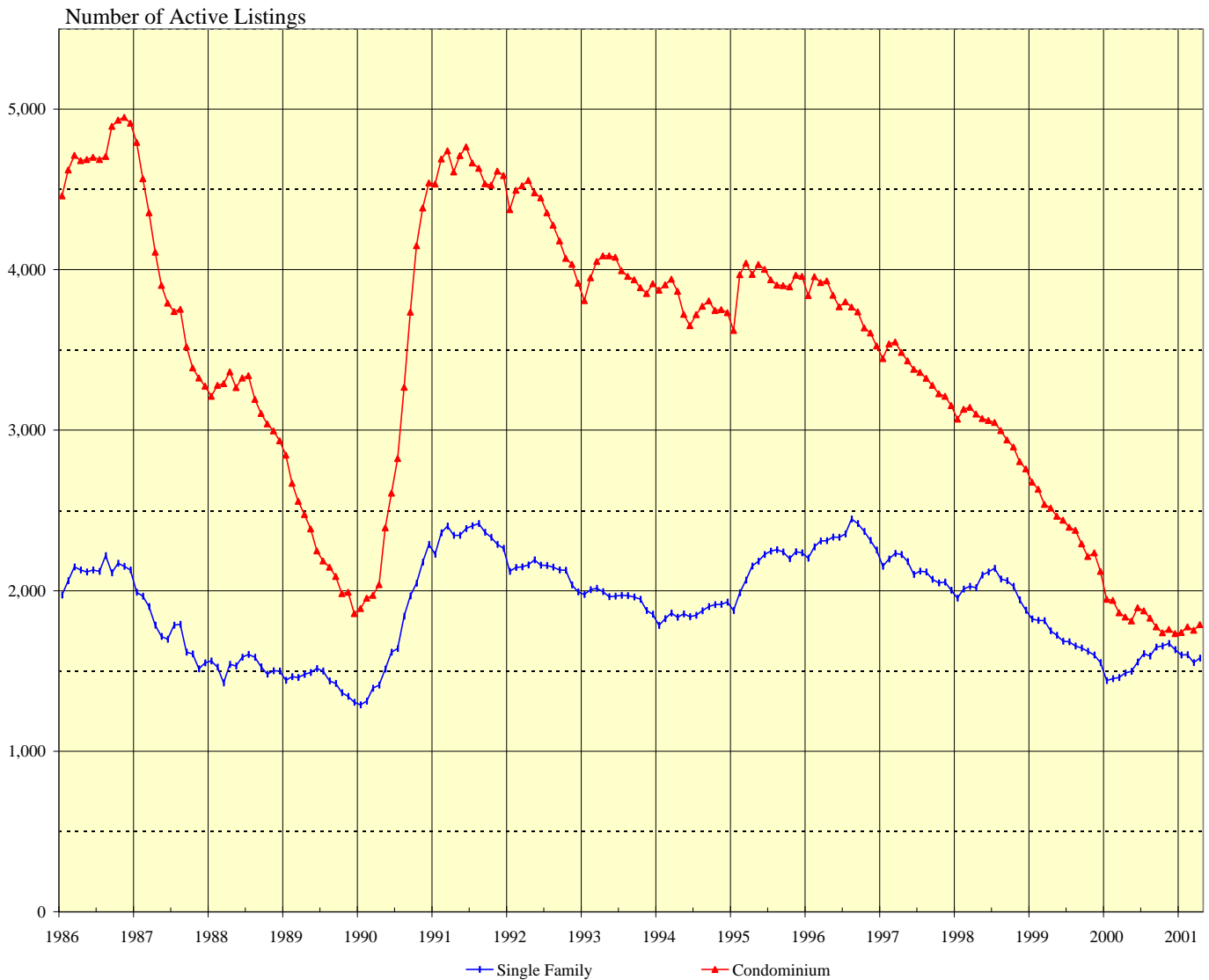
| SINGLE FAMILY HOMES | | | | | | |
|-----------------------|---------------|-------------------|----------------------|-------------------|-------------------------|-------------------|
| Neighborhood Group | Current Month | | Same Month Last Year | | Changes Since Last Year | |
| | Number | Median List Price | Number | Median List Price | Number | Median List Price |
| Moanalua-Kalihi | 30 | \$250,000 | 17 | \$275,000 | 76.5% | -9.1% |
| Honolulu | 34 | \$580,000 | 42 | \$469,200 | -19.0% | 23.6% |
| Kapahulu-Diamond Head | 30 | \$430,000 | 21 | \$395,000 | 42.9% | 8.9% |
| Waialae-Kahala | 24 | \$900,000 | 24 | \$946,500 | 0.0% | -4.9% |
| Aina Haina-Kuliouou | 8 | \$756,500 | 13 | \$812,000 | -38.5% | -6.8% |
| Hawaii Kai | 31 | \$450,000 | 31 | \$499,500 | 0.0% | -9.9% |
| Kailua-Waimanalo | 51 | \$449,000 | 51 | \$400,000 | 0.0% | 12.3% |
| Kaneohe | 33 | \$359,800 | 29 | \$330,000 | 13.8% | 9.0% |
| Windward Coast | 22 | \$319,000 | 15 | \$269,000 | 46.7% | 18.6% |
| North Shore | 18 | \$432,000 | 23 | \$595,000 | -21.7% | -27.4% |
| Wahiawa | 12 | \$207,700 | 11 | \$204,000 | 9.1% | 1.8% |
| Mililani | 23 | \$275,000 | 23 | \$285,000 | 0.0% | -3.5% |
| Makaha-Nanakuli | 28 | \$165,000 | 28 | \$152,500 | 0.0% | 8.2% |
| Ewa Plain | 57 | \$242,500 | 56 | \$237,500 | 1.8% | 2.1% |
| Makakilo | 17 | \$250,000 | 12 | \$332,000 | 41.7% | -24.7% |
| Waipahu | 36 | \$282,500 | 37 | \$230,000 | -2.7% | 22.8% |
| Pearl City-Aiea | 36 | \$299,000 | 25 | \$326,000 | 44.0% | -8.3% |
| OVERALL OAHU | 490 | \$335,000 | 458 | \$332,500 | 7.0% | 0.8% |

| CONDOMINIUMS | | | | | | |
|---------------------|---------------|-------------------|----------------------|-------------------|-------------------------|-------------------|
| Neighborhood Group | Current Month | | Same Month Last Year | | Changes Since Last Year | |
| | Number | Median List Price | Number | Median List Price | Number | Median List Price |
| Moanalua-Salt Lake | 32 | \$133,500 | 15 | \$100,000 | 113.3% | 33.5% |
| Kalihi-Palama | 26 | \$123,500 | 12 | \$175,000 | 116.7% | -29.4% |
| Downtown-Nuuanu | 38 | \$204,500 | 21 | \$153,000 | 81.0% | 33.7% |
| Ala Moana-Kakaako | 30 | \$249,500 | 34 | \$282,000 | -11.8% | -11.5% |
| Waikiki | 132 | \$168,500 | 116 | \$162,500 | 13.8% | 3.7% |
| Makiki-Moilili | 58 | \$177,900 | 55 | \$135,000 | 5.5% | 31.8% |
| Kapahulu-Kuliouou | 29 | \$390,000 | 17 | \$275,000 | 70.6% | 41.8% |
| Hawaii Kai | 28 | \$259,500 | 14 | \$277,000 | 100.0% | -6.3% |
| Kailua-Waimanalo | 14 | \$186,500 | 17 | \$178,500 | -17.6% | 4.5% |
| Kaneohe | 23 | \$199,000 | 21 | \$127,500 | 9.5% | 56.1% |
| Windward Coast | 1 | \$98,900 | 4 | \$49,000 | -75.0% | 101.8% |
| North Shore | 3 | \$134,500 | 6 | \$137,300 | -50.0% | -2.0% |
| Wahiawa | 5 | \$54,000 | 2 | \$83,000 | 150.0% | -34.9% |
| Mililani | 33 | \$90,000 | 25 | \$88,000 | 32.0% | 2.3% |
| Makaha-Nanakuli | 21 | \$56,000 | 17 | \$49,500 | 23.5% | 13.1% |
| Ewa Plain | 30 | \$91,200 | 18 | \$95,800 | 66.7% | -4.8% |
| Makakilo | 10 | \$99,000 | 6 | \$95,500 | 66.7% | 3.7% |
| Waipahu | 21 | \$118,000 | 32 | \$114,000 | -34.4% | 3.5% |
| Pearl City-Aiea | 29 | \$95,000 | 41 | \$99,000 | -29.3% | -4.0% |
| OVERALL OAHU | 563 | \$155,000 | 473 | \$135,000 | 19.0% | 14.8% |

SOURCE: Honolulu Board of Realtors® Research Department, compiled from MLS data.

INVENTORY OF ACTIVE RESIDENTIAL LISTINGS

OAHU, HAWAII: 1986 - 2001, Monthly



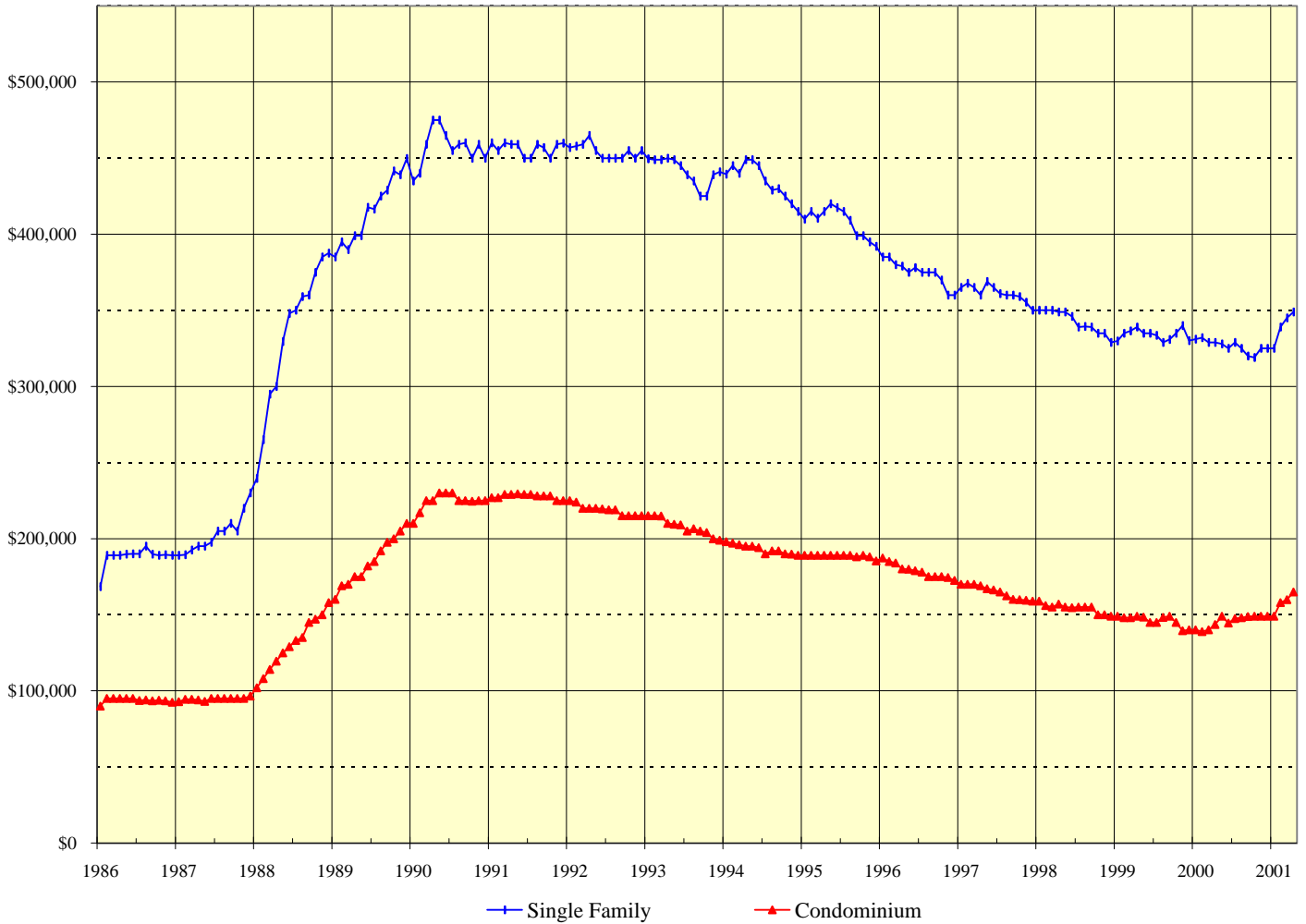
| 1986 - 1996 | | |
|-------------|-------|-------|
| Yr:Hf | SF | Condo |
| 1986 | 2,122 | 4,745 |
| 1987 | 1,743 | 3,877 |
| 1988 | 1,531 | 3,195 |
| 1989 | 1,435 | 2,286 |
| 1990 | 1,708 | 2,979 |
| 1991 | 2,345 | 4,634 |
| 1992 | 2,126 | 4,309 |
| 1993 | 1,958 | 3,967 |
| 94:H1 | 1,833 | 3,826 |
| 94:H2 | 1,897 | 3,755 |
| 95:H1 | 2,082 | 3,939 |
| 95:H2 | 2,237 | 3,927 |
| 96:H1 | 2,294 | 3,876 |
| 96:H2 | 2,359 | 3,679 |

| Month | 1997 | | 1998 | | 1999 | | 2000 | | 2001 | |
|-------|---------------|-------|---------------|-------|---------------|-------|---------------|-------|---------------|-------|
| | Single Family | Condo | Single Family | Condo | Single Family | Condo | Single Family | Condo | Single Family | Condo |
| Jan | 2,152 | 3,447 | 1,953 | 3,069 | 1,824 | 2,676 | 1,440 | 1,947 | 1,600 | 1,740 |
| Feb | 2,198 | 3,537 | 2,010 | 3,130 | 1,816 | 2,632 | 1,453 | 1,939 | 1,602 | 1,774 |
| Mar | 2,232 | 3,550 | 2,028 | 3,142 | 1,813 | 2,537 | 1,459 | 1,863 | 1,552 | 1,753 |
| Apr | 2,226 | 3,484 | 2,019 | 3,101 | 1,750 | 2,515 | 1,488 | 1,837 | 1,581 | 1,789 |
| May | 2,182 | 3,433 | 2,098 | 3,073 | 1,722 | 2,465 | 1,497 | 1,812 | | |
| Jun | 2,101 | 3,379 | 2,117 | 3,060 | 1,686 | 2,439 | 1,556 | 1,895 | | |
| Jul | 2,122 | 3,361 | 2,140 | 3,048 | 1,682 | 2,396 | 1,609 | 1,875 | | |
| Aug | 2,116 | 3,323 | 2,073 | 2,998 | 1,655 | 2,376 | 1,592 | 1,830 | | |
| Sep | 2,072 | 3,279 | 2,063 | 2,939 | 1,644 | 2,293 | 1,648 | 1,774 | | |
| Oct | 2,048 | 3,227 | 2,027 | 2,895 | 1,622 | 2,213 | 1,655 | 1,738 | | |
| Nov | 2,054 | 3,212 | 1,943 | 2,804 | 1,599 | 2,236 | 1,672 | 1,759 | | |
| Dec | 2,002 | 3,154 | 1,879 | 2,758 | 1,552 | 2,120 | 1,632 | 1,733 | | |

SOURCE: Honolulu Board of Realtors® Research Department, compiled from MLS data.

MEDIAN LIST PRICES OF THE ACTIVE INVENTORY

OAHU, HAWAII: 1986 - 2001, Monthly



| 1986 - 1997 | | |
|-------------|-----------|-----------|
| Yr:Hf | SF | Condo |
| 1986 | \$188,300 | \$93,900 |
| 1987 | \$202,500 | \$94,600 |
| 1988 | \$332,700 | \$130,300 |
| 1989 | \$415,100 | \$184,300 |
| 1990 | \$457,700 | \$224,300 |
| 1991 | \$456,500 | \$227,800 |
| 1992 | \$454,500 | \$218,100 |
| 1993 | \$441,300 | \$207,800 |
| 1994 | \$435,100 | \$193,200 |
| 1995 | \$406,800 | \$188,400 |
| 96:H1 | \$380,333 | \$182,500 |
| 96:H2 | \$369,200 | \$175,000 |
| 97:H1 | \$365,000 | \$168,500 |
| 97:H2 | \$358,000 | \$161,000 |

| Month | 1998 | | 1999 | | 2000 | | 2001 | |
|-------|---------------|-----------|---------------|-----------|---------------|-----------|---------------|-----------|
| | Single Family | Condo | Single Family | Condo | Single Family | Condo | Single Family | Condo |
| Jan | \$350,000 | \$159,000 | \$329,900 | \$149,000 | \$331,000 | \$140,000 | \$325,000 | \$149,000 |
| Feb | \$350,000 | \$156,000 | \$335,000 | \$148,000 | \$332,000 | \$139,000 | \$339,000 | \$158,000 |
| Mar | \$350,000 | \$155,000 | \$336,500 | \$148,000 | \$329,000 | \$140,000 | \$345,000 | \$159,900 |
| Apr | \$349,000 | \$157,000 | \$339,000 | \$149,000 | \$329,000 | \$143,500 | \$349,000 | \$164,900 |
| May | \$349,000 | \$155,000 | \$335,000 | \$148,500 | \$328,000 | \$149,000 | | |
| Jun | \$346,000 | \$154,700 | \$335,000 | \$145,000 | \$325,000 | \$144,500 | | |
| Jul | \$339,000 | \$155,000 | \$333,500 | \$145,000 | \$329,000 | \$147,500 | | |
| Aug | \$339,500 | \$155,000 | \$329,000 | \$148,300 | \$325,000 | \$148,000 | | |
| Sep | \$339,000 | \$155,000 | \$330,800 | \$149,000 | \$320,000 | \$148,800 | | |
| Oct | \$335,000 | \$150,000 | \$335,000 | \$145,000 | \$319,000 | \$149,000 | | |
| Nov | \$335,000 | \$150,000 | \$339,900 | \$139,500 | \$325,000 | \$149,000 | | |
| Dec | \$329,000 | \$149,000 | \$330,000 | \$140,000 | \$325,000 | \$149,000 | | |

SOURCE: Honolulu Board of Realtors® Research Department, compiled from MLS data.

Availability of Housing on Oahu

Comparisons Between APRIL 2001 and 2000

SINGLE FAMILY HOMES

| Neighborhood Group | Current Month | | Last Month | | Changes Since Last Month | | Same Month Last Year | | Changes Since Last Year | |
|-----------------------|---------------|------------------|--------------|------------------|--------------------------|-------------|----------------------|------------------|-------------------------|-------------|
| | Number | Median | Number | Median | Number | MLP | Number | Median | Number | MLP |
| | Active | List Price | Active | List Price | Active | MLP | Active | List Price | Active | MLP |
| Moanalua-Kalihi | 114 | \$289,400 | 108 | \$292,400 | 5.6% | -1.0% | 119 | \$295,000 | -4.2% | -1.9% |
| Honolulu | 106 | \$490,000 | 95 | \$485,000 | 11.6% | 1.0% | 119 | \$500,000 | -10.9% | -2.0% |
| Kapahulu-Diamond Head | 94 | \$539,500 | 94 | \$532,000 | 0.0% | 1.4% | 90 | \$509,000 | 4.4% | 6.0% |
| Waialae-Kahala | 76 | \$999,500 | 78 | \$996,500 | -2.6% | 0.3% | 60 | \$936,500 | 26.7% | 6.7% |
| Aina Haina-Kuliouou | 62 | \$849,000 | 58 | \$870,000 | 6.9% | -2.4% | 46 | \$1,149,500 | 34.8% | -26.1% |
| Hawaii Kai | 82 | \$513,500 | 89 | \$449,000 | -7.9% | 14.4% | 88 | \$521,800 | -6.8% | -1.6% |
| Kailua-Waimanalo | 140 | \$496,900 | 137 | \$449,900 | 2.2% | 10.4% | 127 | \$380,000 | 10.2% | 30.8% |
| Kaneohe | 98 | \$391,000 | 84 | \$379,500 | 16.7% | 3.0% | 99 | \$359,500 | -1.0% | 8.8% |
| Windward Coast | 71 | \$305,000 | 75 | \$325,000 | -5.3% | -6.2% | 65 | \$349,000 | 9.2% | -12.6% |
| North Shore | 102 | \$457,500 | 108 | \$437,500 | -5.6% | 4.6% | 73 | \$350,000 | 39.7% | 30.7% |
| Wahiawa | 30 | \$249,500 | 32 | \$245,000 | -6.3% | 1.8% | 31 | \$235,000 | -3.2% | 6.2% |
| Mililani | 68 | \$279,000 | 71 | \$289,000 | -4.2% | -3.5% | 74 | \$285,000 | -8.1% | -2.1% |
| Makaha-Nanakuli | 152 | \$160,000 | 150 | \$155,000 | 1.3% | 3.2% | 122 | \$165,000 | 24.6% | -3.0% |
| Ewa Plain | 150 | \$232,000 | 141 | \$233,000 | 6.4% | -0.4% | 139 | \$233,900 | 7.9% | -0.8% |
| Makakilo | 43 | \$269,000 | 43 | \$289,000 | 0.0% | -6.9% | 38 | \$262,000 | 13.2% | 2.7% |
| Waipahu | 83 | \$285,000 | 92 | \$255,000 | -9.8% | 11.8% | 116 | \$239,000 | -28.4% | 19.2% |
| Pearl City-Aiea | 110 | \$317,400 | 97 | \$305,000 | 13.4% | 4.1% | 82 | \$325,000 | 34.1% | -2.3% |
| OVERALL OAHU | 1,581 | \$349,000 | 1,552 | \$345,000 | 1.9% | 1.2% | 1,488 | \$329,000 | 6.3% | 6.1% |

CONDOMINIUMS

| Neighborhood Group | Current Month | | Last Month | | Changes Since Last Month | | Same Month Last Year | | Changes Since Last Year | |
|---------------------|---------------|------------------|--------------|------------------|--------------------------|-------------|----------------------|------------------|-------------------------|--------------|
| | Number | Median | Number | Median | Number | MLP | Number | Median | Number | MLP |
| | Active | List Price | Active | List Price | Active | MLP | Active | List Price | Active | MLP |
| Moanalua-Salt Lake | 83 | \$127,000 | 76 | \$126,000 | 9.2% | 0.8% | 99 | \$120,000 | -16.2% | 5.8% |
| Kalihi-Palama | 67 | \$160,000 | 65 | \$160,000 | 3.1% | 0.0% | 66 | \$120,000 | 1.5% | 33.3% |
| Downtown-Nuuanu | 140 | \$209,500 | 134 | \$202,000 | 4.5% | 3.7% | 130 | \$188,300 | 7.7% | 11.3% |
| Ala Moana-Kakaako | 102 | \$190,000 | 108 | \$184,500 | -5.6% | 3.0% | 128 | \$244,500 | -20.3% | -22.3% |
| Waikiki | 470 | \$170,000 | 467 | \$170,000 | 0.6% | 0.0% | 410 | \$155,000 | 14.6% | 9.7% |
| Makiki-Moiliili | 312 | \$165,000 | 315 | \$160,000 | -1.0% | 3.1% | 299 | \$149,900 | 4.3% | 10.1% |
| Kapahulu-Kuliouou | 90 | \$392,500 | 80 | \$395,000 | 12.5% | -0.6% | 82 | \$307,000 | 9.8% | 27.9% |
| Hawaii Kai | 84 | \$260,000 | 77 | \$260,000 | 9.1% | 0.0% | 53 | \$230,000 | 58.5% | 13.0% |
| Kailua-Waimanalo | 34 | \$179,500 | 36 | \$224,500 | -5.6% | -20.0% | 28 | \$153,000 | 21.4% | 17.3% |
| Kaneohe | 45 | \$199,000 | 44 | \$199,700 | 2.3% | -0.4% | 64 | \$192,000 | -29.7% | 3.6% |
| Windward Coast | 9 | \$95,000 | 8 | \$107,000 | 12.5% | -11.2% | 5 | \$69,500 | 80.0% | 36.7% |
| North Shore | 25 | \$145,000 | 25 | \$144,900 | 0.0% | 0.1% | 25 | \$145,000 | 0.0% | 0.0% |
| Wahiawa | 10 | \$50,500 | 8 | \$46,000 | 25.0% | 9.8% | 6 | \$40,800 | 66.7% | 23.8% |
| Mililani | 54 | \$135,800 | 60 | \$112,500 | -10.0% | 20.7% | 80 | \$111,500 | -32.5% | 21.8% |
| Makaha-Nanakuli | 73 | \$54,500 | 78 | \$55,500 | -6.4% | -1.8% | 58 | \$60,000 | 25.9% | -9.2% |
| Ewa Plain | 39 | \$125,000 | 38 | \$99,900 | 2.6% | 25.1% | 59 | \$95,900 | -33.9% | 30.3% |
| Makakilo | 19 | \$108,900 | 13 | \$99,900 | 46.2% | 9.0% | 20 | \$107,500 | -5.0% | 1.3% |
| Waipahu | 56 | \$116,500 | 53 | \$114,000 | 5.7% | 2.2% | 70 | \$89,500 | -20.0% | 30.2% |
| Pearl City-Aiea | 77 | \$105,000 | 68 | \$96,500 | 13.2% | 8.8% | 155 | \$99,000 | -50.3% | 6.1% |
| OVERALL OAHU | 1,789 | \$164,900 | 1,753 | \$159,900 | 2.1% | 3.1% | 1,837 | \$143,500 | -2.6% | 14.9% |

SOURCE: Honolulu Board of Realtors® Research Department, compiled from MLS data.

Available Condominiums on Oahu by Land Tenure

Comparisons Between APRIL 2001 and 2000

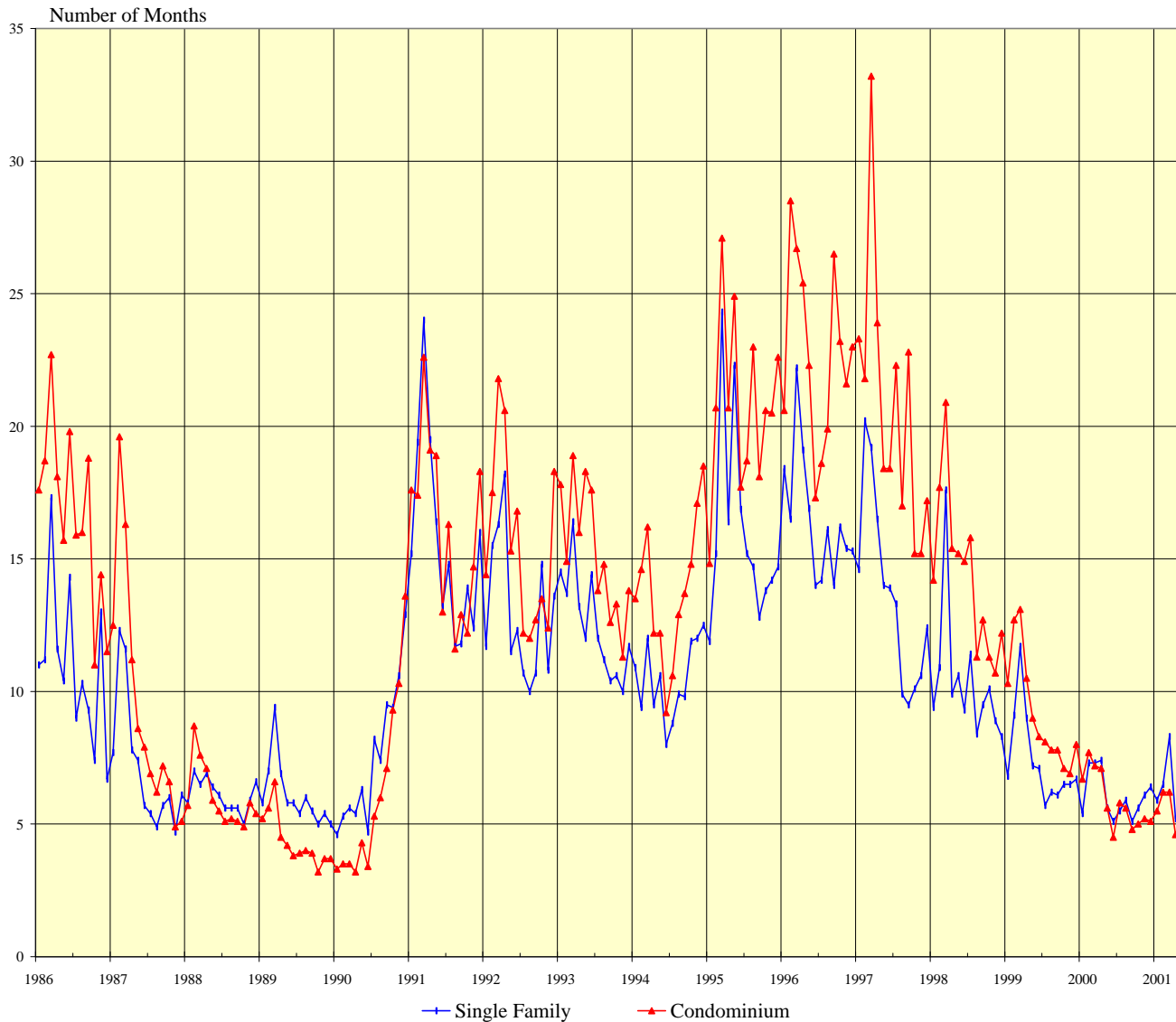
| FEE SIMPLE CONDOMINIUMS | | | | | | | | | |
|-------------------------|---------------|-------------------|----------------------|----------------------|-------------------|----------------------|------------------------|--------------|----------------|
| Neighborhood Group | Current Month | | | Same Month Last Year | | | Changes from Last Year | | |
| | Number Active | Median List Price | Percent of Inventory | Number Active | Median List Price | Percent of Inventory | Number Active | MLP | Tenure Percent |
| Moanalua-Salt Lake | 80 | \$129,500 | 96.4% | 93 | \$125,000 | 93.9% | -14.0% | 3.6% | 2.4% |
| Kalihi-Palama | 55 | \$225,000 | 82.1% | 55 | \$150,000 | 83.3% | 0.0% | 50.0% | -1.2% |
| Downtown-Nuuanu | 103 | \$226,500 | 73.6% | 85 | \$192,500 | 65.4% | 21.2% | 17.7% | 8.2% |
| Ala Moana-Kakaako | 82 | \$230,000 | 80.4% | 94 | \$329,000 | 73.4% | -12.8% | -30.1% | 7.0% |
| Waikiki | 217 | \$205,000 | 46.2% | 183 | \$189,000 | 44.6% | 18.6% | 8.5% | 1.5% |
| Makiki-Moilili | 251 | \$179,900 | 80.4% | 234 | \$160,000 | 78.3% | 7.3% | 12.4% | 2.2% |
| Kapahulu-Kuliouou | 53 | \$385,000 | 58.9% | 48 | \$260,000 | 58.5% | 10.4% | 48.1% | 0.4% |
| Hawaii Kai | 67 | \$269,000 | 79.8% | 38 | \$266,500 | 71.7% | 76.3% | 0.9% | 8.1% |
| Kailua-Waimanalo | 22 | \$182,000 | 64.7% | 20 | \$157,400 | 71.4% | 10.0% | 15.6% | -6.7% |
| Kaneohe | 37 | \$199,500 | 82.2% | 39 | \$170,000 | 60.9% | -5.1% | 17.4% | 21.3% |
| Windward Coast | 6 | \$99,000 | 66.7% | 0 | N/A | 0.0% | N/A | N/A | 66.7% |
| North Shore | 4 | \$192,500 | 16.0% | 10 | \$107,800 | 40.0% | -60.0% | 78.6% | -24.0% |
| Wahiawa | 9 | \$54,000 | 90.0% | 6 | \$40,800 | 100.0% | 50.0% | 32.4% | -10.0% |
| Mililani | 54 | \$135,800 | 100.0% | 80 | \$111,500 | 100.0% | -32.5% | 21.8% | 0.0% |
| Makaha-Nanakuli | 59 | \$65,000 | 80.8% | 46 | \$61,500 | 79.3% | 28.3% | 5.7% | 1.5% |
| Ewa Plain | 39 | \$125,000 | 100.0% | 59 | \$95,900 | 100.0% | -33.9% | 30.3% | 0.0% |
| Makakilo | 18 | \$109,400 | 94.7% | 20 | \$107,500 | 100.0% | -10.0% | 1.8% | -5.3% |
| Waipahu | 55 | \$119,000 | 98.2% | 68 | \$92,000 | 97.1% | -19.1% | 29.3% | 1.1% |
| Pearl City-Aiea | 61 | \$115,000 | 79.2% | 122 | \$108,000 | 78.7% | -50.0% | 6.5% | 0.5% |
| All FEE SIMPLE | 1,272 | \$175,800 | 71.1% | 1,300 | \$150,000 | 70.8% | -2.2% | 17.2% | 0.3% |

| LEASEHOLD CONDOMINIUMS | | | | | | | | | |
|------------------------|---------------|-------------------|----------------------|----------------------|-------------------|----------------------|------------------------|-------------|----------------|
| Neighborhood Group | Current Month | | | Same Month Last Year | | | Changes from Last Year | | |
| | Number Active | Median List Price | Percent of Inventory | Number Active | Median List Price | Percent of Inventory | Number Active | MLP | Tenure Percent |
| Moanalua-Salt Lake | 3 | \$89,000 | 3.6% | 6 | \$69,300 | 6.1% | -50.0% | 28.4% | -2.4% |
| Kalihi-Palama | 12 | \$110,000 | 17.9% | 11 | \$39,800 | 16.7% | 9.1% | 176.4% | 1.2% |
| Downtown-Nuuanu | 37 | \$139,900 | 26.4% | 45 | \$169,000 | 34.6% | -17.8% | -17.2% | -8.2% |
| Ala Moana-Kakaako | 20 | \$124,500 | 19.6% | 34 | \$162,000 | 26.6% | -41.2% | -23.1% | -7.0% |
| Waikiki | 253 | \$144,500 | 53.8% | 227 | \$128,500 | 55.4% | 11.5% | 12.5% | -1.5% |
| Makiki-Moilili | 61 | \$115,000 | 19.6% | 65 | \$115,000 | 21.7% | -6.2% | 0.0% | -2.2% |
| Kapahulu-Kuliouou | 37 | \$395,000 | 41.1% | 34 | \$350,000 | 41.5% | 8.8% | 12.9% | -0.4% |
| Hawaii Kai | 17 | \$198,900 | 20.2% | 15 | \$169,000 | 28.3% | 13.3% | 17.7% | -8.1% |
| Kailua-Waimanalo | 12 | \$158,500 | 35.3% | 8 | \$98,300 | 28.6% | 50.0% | 61.2% | 6.7% |
| Kaneohe | 8 | \$168,400 | 17.8% | 25 | \$194,000 | 39.1% | -68.0% | -13.2% | -21.3% |
| Windward Coast | 3 | \$70,000 | 33.3% | 5 | \$69,500 | 100.0% | -40.0% | 0.7% | -66.7% |
| North Shore | 21 | \$144,900 | 84.0% | 15 | \$145,000 | 60.0% | 40.0% | -0.1% | 24.0% |
| Wahiawa | 1 | \$46,000 | 10.0% | 0 | N/A | 0.0% | N/A | N/A | 10.0% |
| Mililani | 0 | N/A | 0.0% | 0 | N/A | 0.0% | N/A | N/A | 0.0% |
| Makaha-Nanakuli | 14 | \$37,400 | 19.2% | 12 | \$40,000 | 20.7% | 16.7% | -6.5% | -1.5% |
| Ewa Plain | 0 | N/A | 0.0% | 0 | N/A | 0.0% | N/A | N/A | 0.0% |
| Makakilo | 1 | \$99,500 | 5.3% | 0 | N/A | 0.0% | N/A | N/A | 5.3% |
| Waipahu | 1 | \$39,900 | 1.8% | 2 | \$38,900 | 2.9% | N/A | N/A | -1.1% |
| Pearl City-Aiea | 16 | \$68,000 | 20.8% | 33 | \$69,000 | 21.3% | -51.5% | -1.4% | -0.5% |
| All LEASEHOLD | 517 | \$139,000 | 28.9% | 537 | \$130,000 | 29.2% | -3.7% | 6.9% | -0.3% |

SOURCE: Honolulu Board of Realtors® Research Department, compiled from MLS data.

MONTHS OF INVENTORY REMAINING

OAHU, HAWAII: 1986 - 2001, Monthly



| 1986 - 1995 | | |
|-------------|------|-------|
| Yr:Hf | SF | Condo |
| 1986 | 11.0 | 16.7 |
| 1987 | 7.1 | 9.4 |
| 1988 | 6.1 | 6.0 |
| 1989 | 6.1 | 4.4 |
| 1990 | 7.5 | 6.1 |
| 1991 | 15.7 | 16.2 |
| 1992 | 13.0 | 15.6 |
| 93:H1 | 14.0 | 17.3 |
| 93:H2 | 11.0 | 13.3 |
| 94:H1 | 10.1 | 13.0 |
| 94:H2 | 10.8 | 14.6 |
| 95:H1 | 17.8 | 21.0 |
| 95:H2 | 14.2 | 20.6 |

| Month | 1996 | | 1997 | | 1998 | | 1999 | | 2000 | | 2001 | |
|-------|------|------|------|------|------|------|------|------|------|-----|------|-----|
| | SF | CO | SF | CO | SF | CO | SF | CO | SF | CO | SF | CO |
| Jan | 18.4 | 20.6 | 14.6 | 23.3 | 9.4 | 14.2 | 6.8 | 10.3 | 5.4 | 6.7 | 5.9 | 5.5 |
| Feb | 16.5 | 28.5 | 20.2 | 21.8 | 10.9 | 17.7 | 9.1 | 12.7 | 7.3 | 7.7 | 6.5 | 6.2 |
| Mar | 22.2 | 26.7 | 19.2 | 33.2 | 17.6 | 20.9 | 11.7 | 13.1 | 7.3 | 7.2 | 8.3 | 6.2 |
| Apr | 19.1 | 25.4 | 16.5 | 23.9 | 9.9 | 15.4 | 9.0 | 10.5 | 7.4 | 7.1 | 5.2 | 4.6 |
| May | 16.9 | 22.3 | 14.0 | 18.4 | 10.6 | 15.2 | 7.2 | 9.0 | 5.6 | 5.6 | | |
| Jun | 14.0 | 17.3 | 13.9 | 18.4 | 9.3 | 14.9 | 7.1 | 8.3 | 5.1 | 4.5 | | |
| Jul | 14.2 | 18.6 | 13.3 | 22.3 | 11.4 | 15.8 | 5.7 | 8.1 | 5.5 | 5.8 | | |
| Aug | 16.1 | 19.9 | 9.9 | 17.0 | 8.4 | 11.3 | 6.2 | 7.8 | 5.9 | 5.6 | | |
| Sep | 14.0 | 26.5 | 9.5 | 22.8 | 9.5 | 12.7 | 6.1 | 7.8 | 5.1 | 4.8 | | |
| Oct | 16.2 | 23.2 | 10.1 | 15.2 | 10.1 | 11.3 | 6.5 | 7.1 | 5.6 | 5.0 | | |
| Nov | 15.4 | 21.6 | 10.6 | 15.2 | 8.9 | 10.7 | 6.5 | 6.9 | 6.1 | 5.2 | | |
| Dec | 15.3 | 23.0 | 12.4 | 17.2 | 8.3 | 12.2 | 6.7 | 8.0 | 6.4 | 5.1 | | |

SOURCE: Honolulu Board of Realtors® Research Department, compiled from MLS data.

Months of Inventory Remaining by Price Ranges and Areas

Comparisons Between APRIL 2001 and 2000

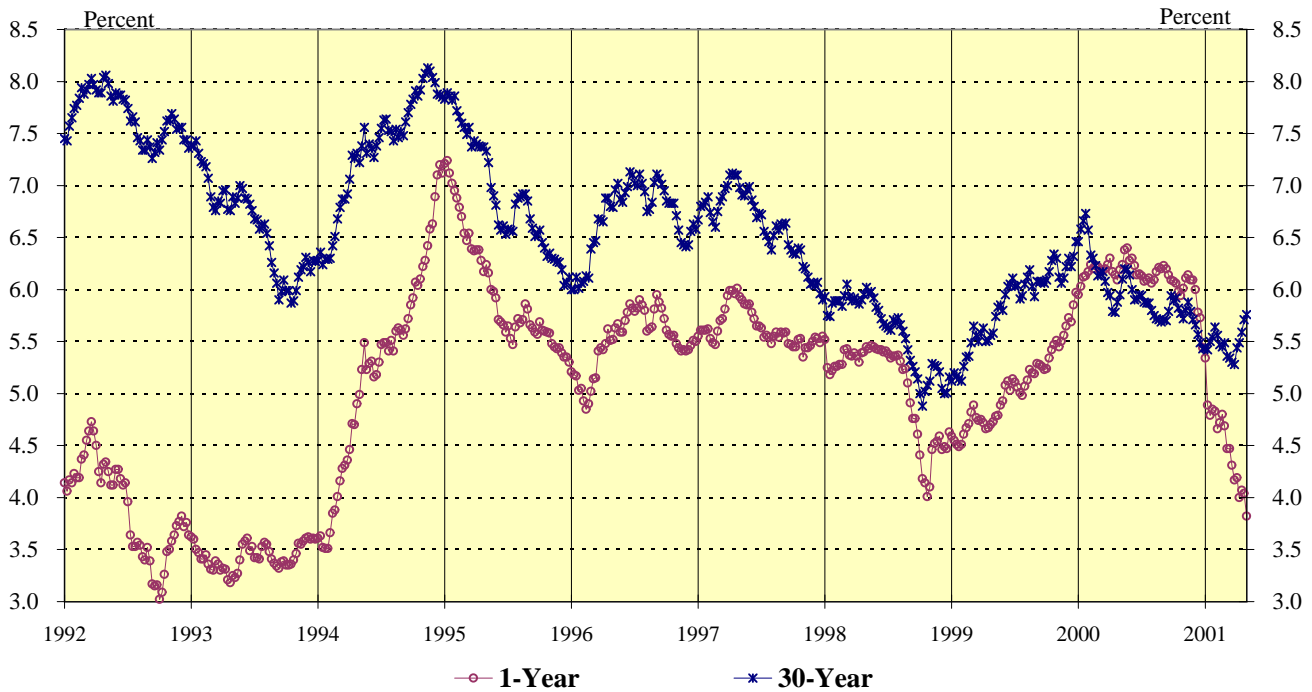
| SINGLE FAMILY HOMES | | | | | | | |
|----------------------------|----------------------|--------------|------------|-----------------------------|--------------|------------|---|
| | <u>Current Month</u> | | | <u>Same Month Last Year</u> | | | Year-to-Year Change in Number of Months |
| | Number of | | | Number of | | | |
| | Sales | Inventory | Months | Sales | Inventory | Months | |
| Price Ranges (000) | | | | | | | |
| Less Than \$200 | 70 | 250 | 3.6 | 62 | 224 | 3.6 | 0.0 |
| \$200 - 299 | 100 | 392 | 3.9 | 70 | 452 | 6.5 | -2.5 |
| \$300 - 399 | 59 | 324 | 5.5 | 52 | 280 | 5.4 | 0.1 |
| \$400 - 499 | 23 | 161 | 7.0 | 16 | 158 | 9.9 | -2.9 |
| \$500 - 699 | 27 | 130 | 4.8 | 14 | 130 | 9.3 | -4.5 |
| \$700 - 999 | 13 | 123 | 9.5 | 9 | 97 | 10.8 | -1.3 |
| More Than \$1,000 | 13 | 201 | 15.5 | 8 | 147 | 18.4 | -2.9 |
| Areas | | | | | | | |
| Metro Oahu | 37 | 220 | 5.9 | 25 | 238 | 9.5 | -3.6 |
| East Oahu | 55 | 314 | 5.7 | 47 | 284 | 6.0 | -0.3 |
| Windward Oahu | 64 | 309 | 4.8 | 42 | 291 | 6.9 | -2.1 |
| North Shore | 8 | 102 | 12.8 | 10 | 73 | 7.3 | 5.5 |
| Leeward Oahu | 141 | 636 | 4.5 | 107 | 602 | 5.6 | -1.1 |
| All Single Family | 305 | 1,581 | 5.2 | 231 | 1,488 | 6.4 | -1.3 |

| CONDOMINIUMS | | | | | | | |
|---------------------------|----------------------|--------------|------------|-----------------------------|--------------|------------|---|
| | <u>Current Month</u> | | | <u>Same Month Last Year</u> | | | Year-to-Year Change in Number of Months |
| | Number of | | | Number of | | | |
| | Sales | Inventory | Months | Sales | Inventory | Months | |
| Price Ranges (000) | | | | | | | |
| Less Than \$100 | 144 | 415 | 2.9 | 126 | 535 | 4.2 | -1.4 |
| \$100 - 149 | 85 | 409 | 4.8 | 63 | 442 | 7.0 | -2.2 |
| \$150 - 199 | 56 | 298 | 5.3 | 31 | 333 | 10.7 | -5.4 |
| \$200 - 249 | 42 | 214 | 5.1 | 32 | 167 | 5.2 | -0.1 |
| \$250 - 299 | 14 | 116 | 8.3 | 12 | 96 | 8.0 | 0.3 |
| \$300 - 499 | 34 | 201 | 5.9 | 32 | 156 | 4.9 | 1.0 |
| More Than \$500 | 10 | 136 | 13.6 | 13 | 108 | 8.3 | 5.3 |
| Areas | | | | | | | |
| Metro Oahu | 179 | 1,174 | 6.6 | 154 | 1,132 | 7.4 | -0.8 |
| East Oahu | 41 | 174 | 4.2 | 37 | 135 | 3.6 | 0.6 |
| Windward Oahu | 40 | 88 | 2.2 | 22 | 97 | 4.4 | -2.2 |
| North Shore | 5 | 25 | 5.0 | 1 | 25 | 25.0 | -20.0 |
| Leeward Oahu | 120 | 328 | 2.7 | 95 | 448 | 4.7 | -2.0 |
| All Condominiums | 385 | 1,789 | 4.6 | 309 | 1,837 | 5.9 | -1.3 |

NOTE: This table is constructed using the mid-month inventory and the prior month's sales.

SOURCE: Honolulu Board of Realtors® Research Department, compiled from MLS data.

WEEKLY AVERAGE YIELDS OF SELECTED TREASURY SECURITIES



The Average Yields for US Treasury Securities have an important impact on interest rates in the housing market. The relationships are:

| | |
|---------------------------|------------------|
| LOAN RATE FOR: | BASED ON: |
| Adjustable Rate Mortgages | 1-Year TB* |
| Fixed Rate 30-Year Loans | 30-Yr TB* |

*TB = US Treasury Bill or Bond

| Second Half 1999 | | | First Half 2000 | | | Second Half 2000 | | | First Half 2001 | | |
|------------------|-----|------|-----------------|-----|------|------------------|-----|------|-----------------|-----|------|
| Wk | 1YR | 30YR | Wk | 1YR | 30YR | Wk | 1YR | 30YR | Wk | 1YR | 30YR |

| Wk | 1YR | 30YR | Wk | 1YR | 30YR | Wk | 1YR | 30YR | Wk | 1YR | 30YR |
|----|------|------|----|------|------|----|------|------|----|------|------|
| 27 | 5.11 | 6.03 | 1 | 5.95 | 6.46 | 27 | 6.13 | 5.94 | 1 | 5.34 | 5.44 |
| 28 | 5.06 | 6.04 | 2 | 6.03 | 6.58 | 28 | 6.08 | 5.88 | 2 | 4.89 | 5.42 |
| 29 | 5.01 | 5.91 | 3 | 6.12 | 6.66 | 29 | 6.09 | 5.87 | 3 | 4.79 | 5.50 |
| 30 | 4.98 | 5.94 | 4 | 6.13 | 6.73 | 30 | 6.11 | 5.87 | 4 | 4.85 | 5.54 |
| 31 | 5.07 | 6.05 | 5 | 6.17 | 6.57 | 31 | 6.06 | 5.80 | 5 | 4.83 | 5.64 |
| 32 | 5.13 | 6.12 | 6 | 6.24 | 6.33 | 32 | 6.09 | 5.75 | 6 | 4.66 | 5.56 |
| 33 | 5.23 | 6.19 | 7 | 6.20 | 6.30 | 33 | 6.17 | 5.72 | 7 | 4.72 | 5.47 |
| 34 | 5.20 | 6.03 | 8 | 6.23 | 6.23 | 34 | 6.21 | 5.71 | 8 | 4.80 | 5.45 |
| 35 | 5.19 | 5.93 | 9 | 6.22 | 6.13 | 35 | 6.20 | 5.69 | 9 | 4.69 | 5.49 |
| 36 | 5.29 | 6.08 | 10 | 6.18 | 6.15 | 36 | 6.23 | 5.71 | 10 | 4.47 | 5.36 |
| 37 | 5.28 | 6.07 | 11 | 6.18 | 6.17 | 37 | 6.20 | 5.70 | 11 | 4.47 | 5.34 |
| 38 | 5.26 | 6.08 | 12 | 6.20 | 6.08 | 38 | 6.14 | 5.79 | 12 | 4.31 | 5.30 |
| 39 | 5.23 | 6.06 | 13 | 6.24 | 5.97 | 39 | 6.09 | 5.94 | 13 | 4.17 | 5.28 |
| 40 | 5.24 | 6.09 | 14 | 6.30 | 5.94 | 40 | 6.08 | 5.89 | 14 | 4.19 | 5.44 |
| 41 | 5.34 | 6.17 | 15 | 6.17 | 5.79 | 41 | 6.06 | 5.92 | 15 | 4.00 | 5.49 |
| 42 | 5.42 | 6.28 | 16 | 6.14 | 5.78 | 42 | 5.98 | 5.82 | 16 | 4.07 | 5.59 |
| 43 | 5.47 | 6.34 | 17 | 6.09 | 5.88 | 43 | 5.94 | 5.77 | 17 | 4.04 | 5.71 |
| 44 | 5.51 | 6.30 | 18 | 6.19 | 5.95 | 44 | 6.01 | 5.72 | 18 | 3.82 | 5.76 |
| 45 | 5.45 | 6.12 | 19 | 6.24 | 6.10 | 45 | 6.11 | 5.80 | 19 | | |
| 46 | 5.50 | 6.06 | 20 | 6.38 | 6.20 | 46 | 6.14 | 5.88 | 20 | | |
| 47 | 5.56 | 6.11 | 21 | 6.40 | 6.19 | 47 | 6.09 | 5.79 | 21 | | |
| 48 | 5.65 | 6.22 | 22 | 6.28 | 6.14 | 48 | 6.09 | 5.71 | 22 | | |
| 49 | 5.73 | 6.30 | 23 | 6.30 | 6.00 | 49 | 6.00 | 5.66 | 23 | | |
| 50 | 5.69 | 6.22 | 24 | 6.23 | 5.90 | 50 | 5.78 | 5.57 | 24 | | |
| 51 | 5.85 | 6.32 | 25 | 6.14 | 5.91 | 51 | 5.73 | 5.49 | 25 | | |
| 52 | 5.97 | 6.46 | 26 | 6.15 | 5.95 | 52 | 5.44 | 5.43 | 26 | | |

| 1990 - 1999 | | | | | |
|-------------|------|------|-------|------|------|
| Yr:Qt | 1YR | 30YR | Yr:Qt | 1YR | 30YR |
| 90:H1 | 8.20 | 8.54 | 95:Q1 | 6.79 | 7.67 |
| 90:H2 | 7.58 | 8.68 | 95:Q2 | 6.01 | 7.01 |
| 91:Q1 | 6.45 | 8.20 | 95:Q3 | 5.66 | 6.72 |
| 91:Q2 | 6.24 | 8.31 | 95:Q4 | 5.48 | 6.28 |
| 91:Q3 | 5.91 | 8.20 | 96:Q1 | 5.11 | 6.24 |
| 91:Q4 | 4.90 | 7.86 | 96:Q2 | 5.63 | 6.91 |
| 92:Q1 | 4.34 | 7.78 | 96:Q3 | 5.78 | 6.97 |
| 92:Q2 | 4.23 | 7.90 | 96:Q4 | 5.49 | 6.62 |
| 92:Q3 | 3.46 | 7.46 | 97:Q1 | 5.64 | 6.80 |
| 92:Q4 | 3.54 | 7.52 | 97:Q2 | 5.86 | 6.94 |
| 93:Q1 | 3.42 | 7.10 | 97:Q3 | 5.55 | 6.54 |
| 93:Q2 | 3.38 | 6.87 | 97:Q4 | 5.48 | 6.16 |
| 93:Q3 | 3.43 | 6.35 | 98:Q1 | 5.32 | 5.89 |
| 93:Q4 | 3.51 | 6.12 | 98:Q2 | 5.41 | 5.86 |
| 94:Q1 | 3.87 | 6.52 | 98:Q3 | 5.13 | 5.50 |
| 94:Q2 | 5.07 | 7.33 | 98:Q4 | 4.38 | 5.10 |
| 94:Q3 | 5.57 | 7.57 | 99:Q1 | 4.66 | 5.35 |
| 94:Q4 | 6.51 | 7.96 | 99:Q2 | 4.86 | 5.78 |

SOURCE: Honolulu Board of REALTORS® Research Department, compiled from U.S. FEDERAL RESERVE H15 statistical releases.

Be in the know...

With your personal subscription to the **MONTHLY STATISTICAL REPORT**

from the Honolulu Board of Realtors® Research Department

The *Monthly Statistical Report* is published by the Research Department of the Honolulu Board of Realtors® on the first business day of each month. Subscribers may elect to receive either an electronic copy of the report (in Adobe Acrobat) via e-mail or a printed report via first class mail. The cost of a subscription for members of the Honolulu Board of Realtors® is only \$36.00 per year for 12 electronic issues and, for non-members, \$72.00. The printed subscription rate is \$55.00 and \$110.00 per year, respectively. Print subscribers may also receive an electronic copy at no cost.

The *Monthly Statistical Report* contains a series of charts and data tables that provide a complete up-to-the-minute picture of Oahu's residential real estate market. Some of the included charts are:

Sales Volume

New Listing Activity

Median Days on Market

Median Sales Prices

Months of Inventory

Price Range Data

Availability by Area

Leasehold vs Fee Data

Treasury Security Indexes

To order your subscription, complete and return the form below with your check made payable to the Honolulu Board of Realtors®. If you wish to charge your subscription fee, we can accept Visa, MasterCard, Discover or American Express charge cards if you fill in the appropriate lines on the form and provide your signature. Charge requests may be sent to us via fax at 808-732-8732.

--- ✂ ---

Honolulu Board of Realtors® Research Department

MONTHLY STATISTICAL REPORT SUBSCRIPTION FORM

Name: _____ HBR Member: YES NO

Firm: _____ Email: _____

Mailing Address: _____

Phone: _____ Fax: _____ TOTAL ENCLOSED: \$ _____ .00

Report desired: Electronic Print Electronic & Print

Method of payment: Check MasterCard Visa Discover American Express

Charge orders only: Card Number: _____ Expires: _____

Signature: _____

Return this form to: **Research Department, Honolulu Board of Realtors®,
Suite 200, 1136 12th Avenue, Honolulu, Hawaii 96816**

1/2001

For further information contact the Honolulu Board of Realtors®, 808-732-3000

HBR Use only: Date received _____ PDF: Y or N First issue _____