

***MONTHLY STATISTICAL REPORT***  
of Residential Resale Activity on Oahu

**MAY 2001**

(Print Date: June 1, 2001)

Prepared by:

**Research Department  
Honolulu Board of Realtors®  
1136 12th Avenue, Suite 200  
Honolulu, Hawaii 96816 USA**

**Phone: (808) 732-3000**

**Fax: (808) 732-3055**

**E-Mail: hbradmin@hcentral.com**

Visit us on the Internet at:

<http://www.hcentral.com>



Honolulu Board of Realtors® Research Department  
***MONTHLY STATISTICAL REPORT***

**TABLE OF CONTENTS**

**SALES**

Year-to-Date (YTD) Residential Resale Statistics For Oahu by Region	1
Number of Residential Resales by Month	2
Residential Property Annual Sales Rate	3
Median Residential Sales Price by Month	4
Median Number of Days on the Market for Residential Properties	5
Monthly and YTD Sales Activity by Neighborhood	6
Condominium Resale Volume and Median Sales Prices by Land Tenure	7
YTD Condominium Resale Statistics and Days on Market by Land Tenure	8

**NEW LISTINGS**

Number of New Residential Listings by Month	9
Median List Price of New Residential Listings by Month	10
New Listing Activity on Oahu by Neighborhood	11

**ACTIVE LISTINGS**

Inventory of Active Residential Listings by Month	12
Median Price of Active Residential Listings by Month	13
Availability of Housing on Oahu by Neighborhood	14
Available Condominiums on Oahu by Land Tenure	15
Months of Residential Inventory Remaining by Month	16
Months of Inventory Remaining by Price Range and Area	17

**NON-MLS INFORMATION**

Weekly Average Yields of Treasury Securities	18
--	----

**Honolulu Board of Realtors®**  
**Multiple Listing Service**  
**Statistical Summary of RESALES**  
**YEAR-TO-DATE Through May 31, 2001**

NUMBER OF SALES				MEDIAN SALES PRICES			AVERAGE SALES PRICES			
		CHANGES				Percent			Percent	
2001	2000	Num	Percent	2001	2000	Change	2001	2000	Change	

**SINGLE FAMILY HOMES**

<b>OVERALL OAHU</b>	1,308	1,203	105	8.7%	\$284,500	\$295,000	-3.6%	\$369,967	\$404,636	-8.6%
Metro Oahu	150	137	13	9.5%	\$330,000	\$329,000	0.3%	\$391,376	\$392,036	-0.2%
East Oahu	260	265	-5	-1.9%	\$466,500	\$469,000	-0.5%	\$660,088	\$689,401	-4.3%
Windward Oahu	259	273	-14	-5.1%	\$332,000	\$330,000	0.6%	\$410,414	\$425,980	-3.7%
North Shore	43	46	-3	-6.5%	\$249,000	\$310,000	-19.7%	\$299,344	\$502,696	-40.5%
Leeward Oahu	596	482	114	23.7%	\$220,000	\$220,000	0.0%	\$225,534	\$230,208	-2.0%

**CONDOMINIUMS**

<b>OVERALL OAHU</b>	1,716	1,559	157	10.1%	\$132,000	\$125,000	5.6%	\$167,179	\$165,724	0.9%
Metro Oahu	882	804	78	9.7%	\$150,000	\$145,000	3.4%	\$183,172	\$187,022	-2.1%
East Oahu	163	166	-3	-1.8%	\$260,000	\$238,500	9.0%	\$318,230	\$302,754	5.1%
Windward Oahu	144	108	36	33.3%	\$172,000	\$140,300	22.6%	\$163,839	\$156,721	4.5%
North Shore	25	13	12	92.3%	\$140,000	\$135,000	3.7%	\$137,867	\$140,762	-2.1%
Leeward Oahu	502	468	34	7.3%	\$81,300	\$79,100	2.8%	\$92,452	\$83,301	11.0%

**ALL SALES:** 3,024 2,762 262 9.5%

**TOTAL DOLLAR VOLUME OF SALES**

**SINGLE FAMILY HOMES**

**CONDOMINIUMS**

				Percent					Percent
		2001	2000	Change	2001	2000	Change		
<b>TMK Area Designations</b>	<b>OVERALL OAHU:</b>	\$483,916,836	\$486,777,108	-0.6%	\$286,879,164	\$258,363,716	11.0%		
Zone 1 and 2	<b>Metro Oahu</b>	\$58,706,400	\$53,708,932	9.3%	\$161,557,704	\$150,365,688	7.4%		
Zone 3	<b>East Oahu</b>	\$171,622,880	\$182,691,265	-6.1%	\$51,871,490	\$50,257,164	3.2%		
Zone 4 and 5-1 through 5-4	<b>Windward Oahu</b>	\$106,297,226	\$116,292,540	-8.6%	\$23,592,816	\$16,925,868	39.4%		
Zone 5-5 through 5-9 and 6	<b>North Shore</b>	\$12,871,792	\$23,124,016	-44.3%	\$3,446,675	\$1,829,906	88.4%		
Zone 7 through 9	<b>Leeward Oahu</b>	\$134,418,264	\$110,960,256	21.1%	\$46,410,904	\$38,984,868	19.0%		

**TOTAL DOLLAR VOLUME:**

\$770,796,000    \$745,140,824    3.4%

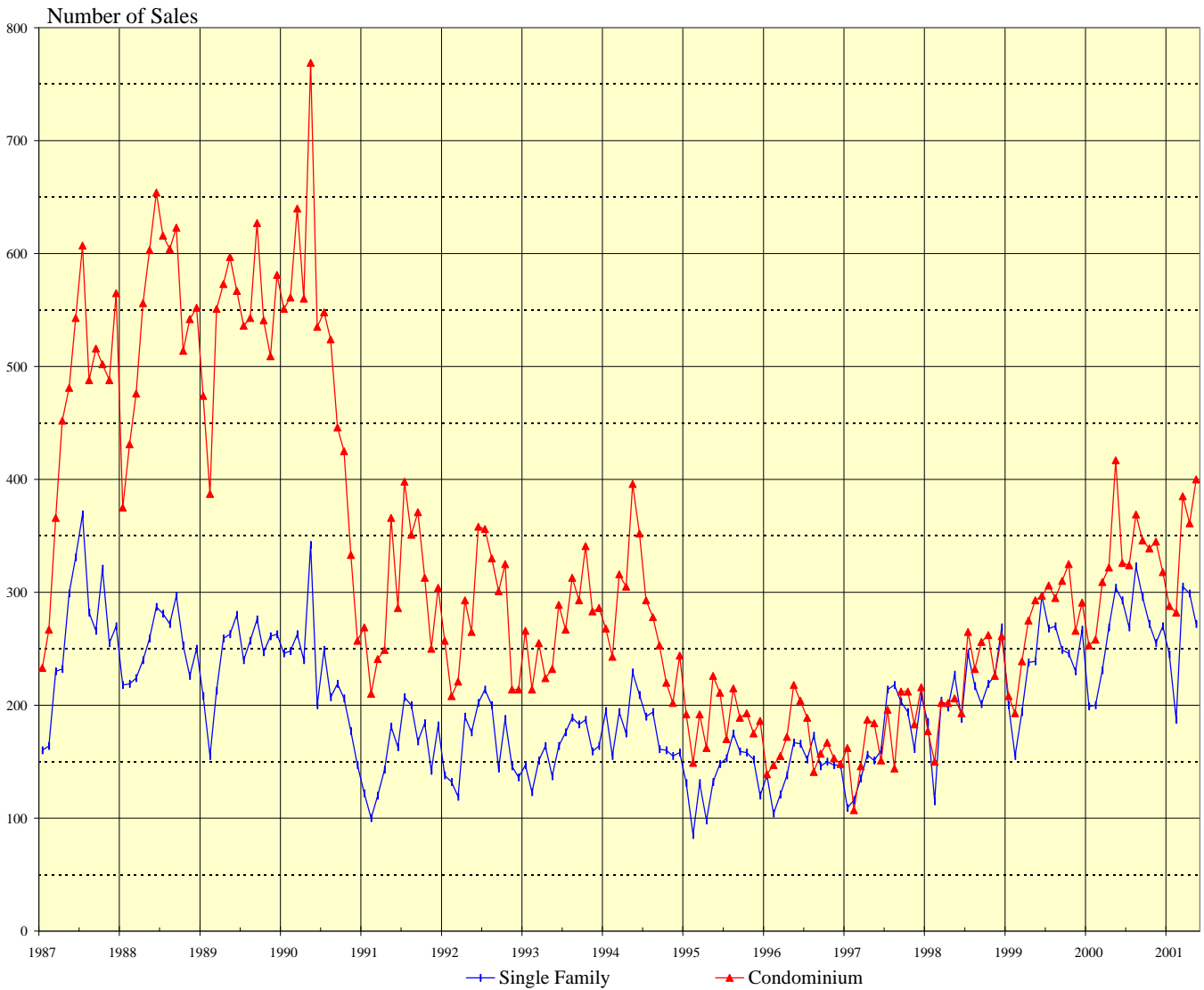
**IMPORTANT: All sales information is shown for the month in which properties were reported sold, after closing and recordation. The time delay between the signing of a sales contract and clearing of escrow is nominally between two and four months.**

Permission to copy graphs and use data from this copyrighted report is freely granted but full attribution of source is required on all copies and reprints.

**SOURCE: Honolulu Board of Realtors® Research Department, compiled from MLS data.**

# NUMBER OF RESIDENTIAL PROPERTY SALES

## OAHU, HAWAII: 1987 - 2001, Monthly

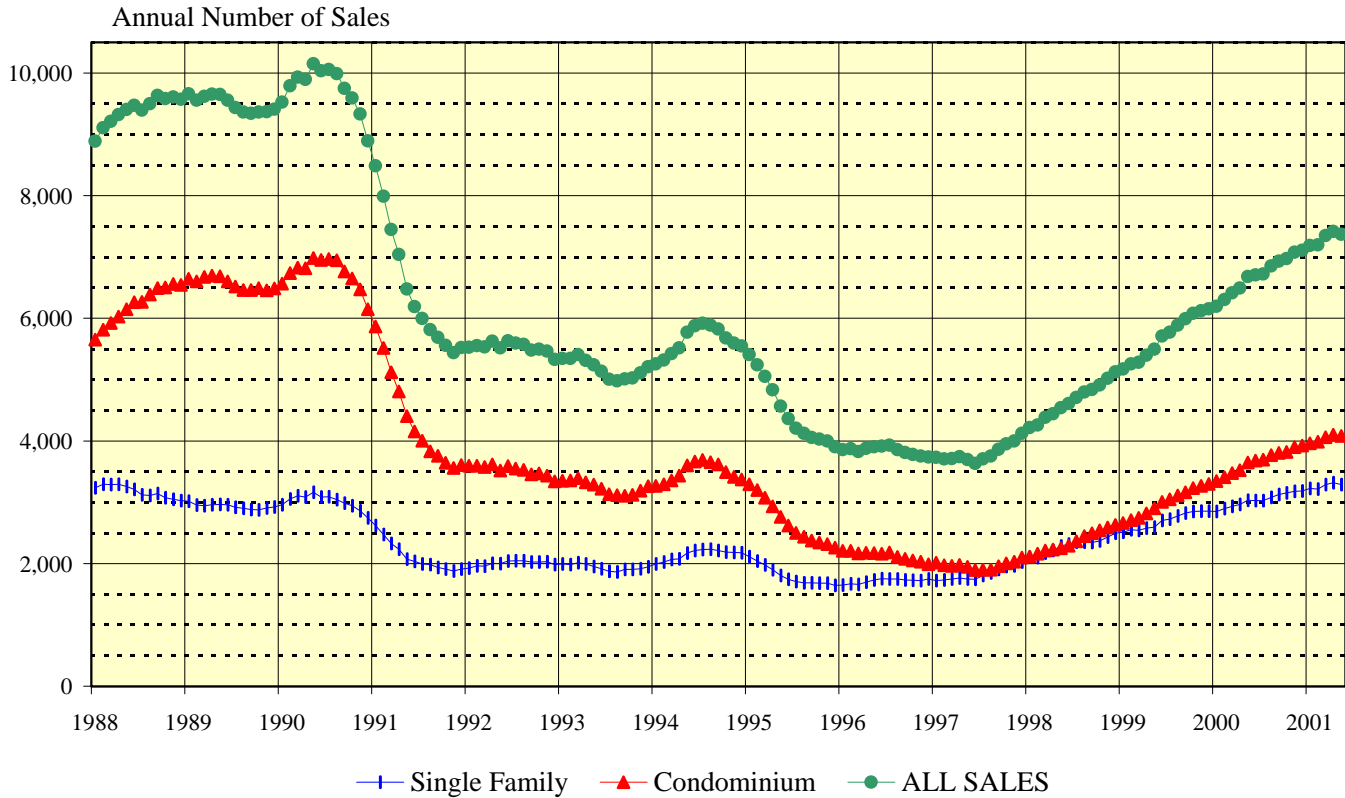


1987 - 1996			1997		1998		1999		2000		2001		
Yr:Hf	SF	Condo	Month	Single Family	Condo	Single Family	Condo	Single Family	Condo	Single Family	Condo	Single Family	Condo
1987	3,179	5,508	Jan	109	162	185	177	200	208	199	253	245	288
1988	3,026	6,546	Feb	116	107	115	150	155	193	200	258	187	282
1989	2,919	6,486	Mar	135	146	204	202	194	239	231	309	305	385
1990	2,744	6,149	Apr	156	187	198	202	238	275	269	322	299	361
1991	1,912	3,607	May	151	184	227	206	239	293	304	417	272	400
1992	1,985	3,342	Jun	160	151	188	193	297	297	293	326		
1993	1,944	3,263	Jul	214	196	246	265	268	306	269	324		
94:H1	1,157	1,880	Aug	218	144	217	232	270	295	323	369		
94:H2	1,018	1,490	Sep	203	212	201	256	249	310	296	346		
95:H1	725	1,132	Oct	194	212	219	262	246	325	272	339		
95:H2	917	1,128	Nov	161	183	226	226	230	266	255	345		
96:H1	834	1,035	Dec	208	216	269	261	267	291	270	318		
96:H2	915	955											

**SOURCE: Honolulu Board of Realtors® Research Department, compiled from MLS data.**

# OAHU RESIDENTIAL PROPERTY SALES RATE

## Annual Unit Sales Rates Based on Prior 12 Months



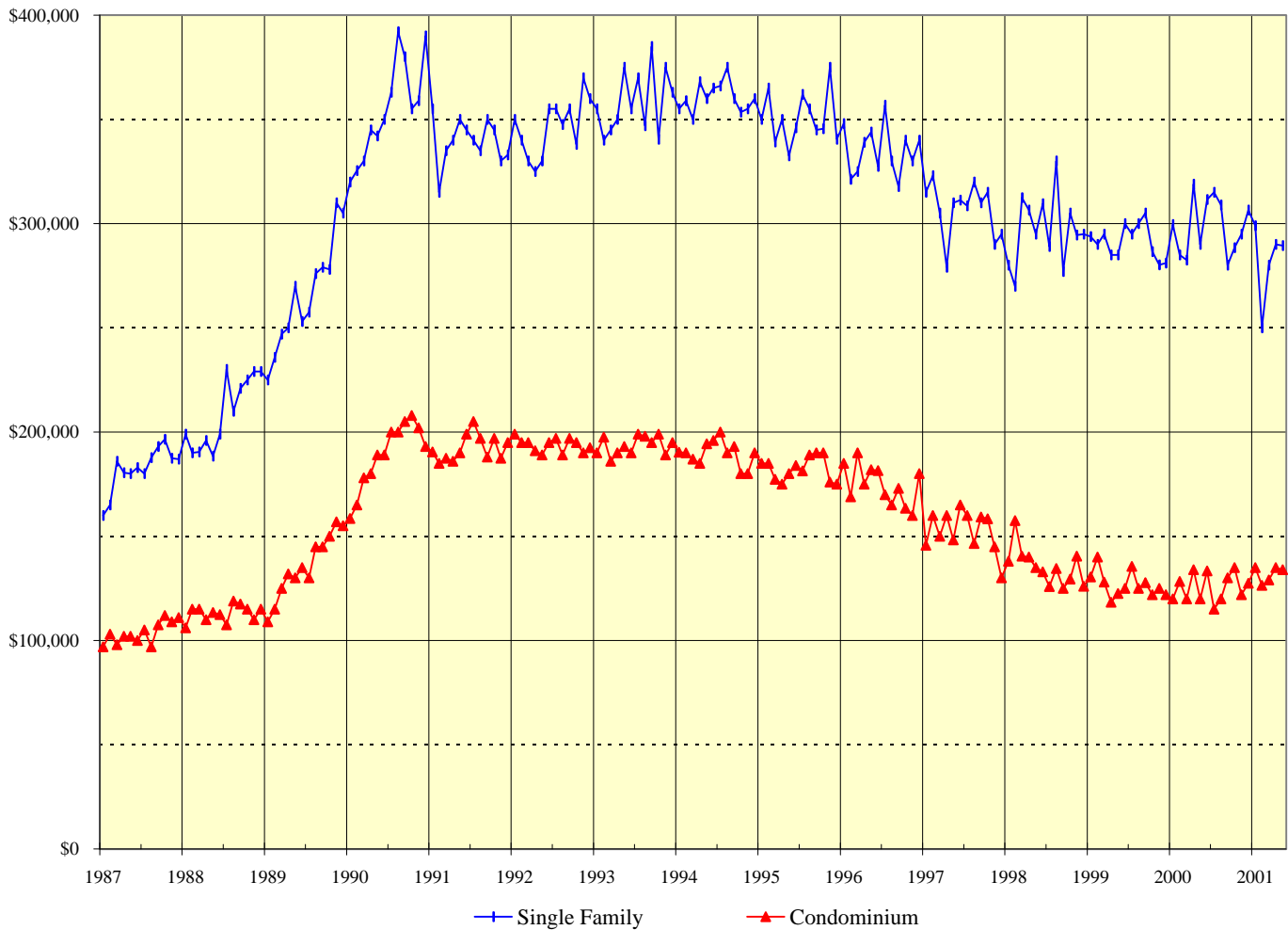
This chart is designed to more clearly show the general direction of the residential resale market on Oahu. It eliminates seasonal patterns that make monthly data difficult to read and interpret. Each point on this chart represents the total sales for the twelve months that end with the marked month. For example, the data points shown for December 2000 denote the total sales activity for the period January through December 2000. Similarly, the data points presented for June 2000 are the total sales for the 12-month period July 1999 through June 2000.

The points on this chart will change direction (i.e., go up or down) each month based on whether the newest month's sales activity is higher or lower than during the same month in the prior year. For example, if the sales reported for June 2000 are higher than those achieved in June 1999, the data points added to the chart for June 2000 will be higher than the May 2000 points.

**SOURCE: Honolulu Board of Realtors® Research Department, compiled from MLS data.**

# MEDIAN SALES PRICES OF RESIDENTIAL PROPERTIES

## OAHU, HAWAII: 1987 - 2001, Monthly



1987 - 1997		
Yr:Hf	SF	Condo
1987	\$185,000	\$104,500
1988	\$210,000	\$114,000
1989	\$270,000	\$135,500
1990	\$352,000	\$187,000
1991	\$340,000	\$192,000
1992	\$349,000	\$193,000
1993	\$358,500	\$193,000
1994	\$360,000	\$190,000
95:H1	\$345,000	\$180,000
95:H2	\$351,000	\$183,500
96:H1	\$334,100	\$180,400
96:H2	\$336,300	\$168,600
97:H1	\$305,000	\$149,000
97:H2	\$308,000	\$148,000

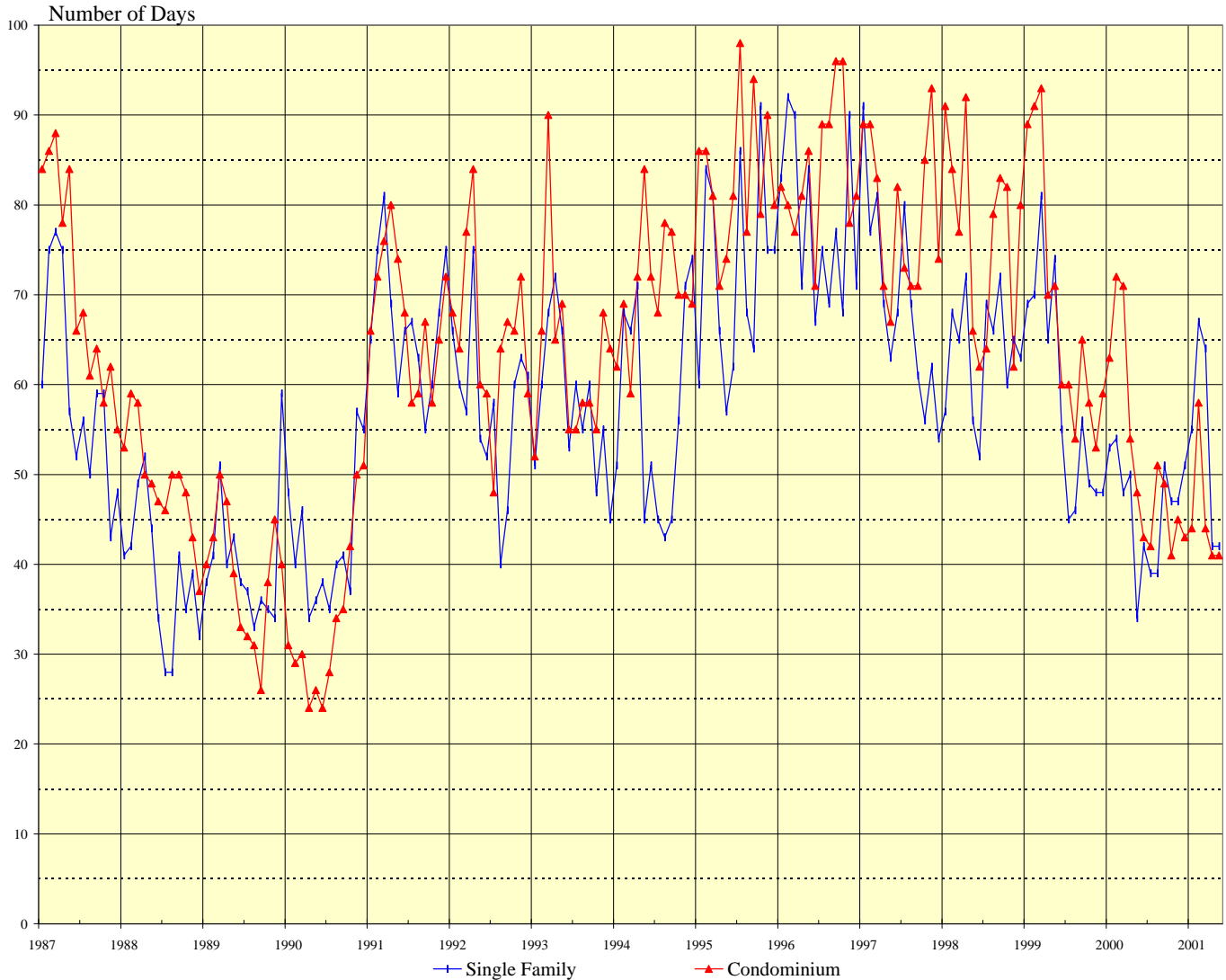
Month	1998		1999		2000		2001	
	Single Family	Condo	Single Family	Condo	Single Family	Condo	Single Family	Condo
Jan	\$280,000	\$138,000	\$293,800	\$130,500	\$299,500	\$120,000	\$299,000	\$135,000
Feb	\$270,000	\$157,500	\$290,000	\$140,000	\$285,000	\$128,300	\$250,000	\$126,500
Mar	\$312,500	\$140,500	\$295,000	\$128,000	\$282,500	\$120,000	\$280,000	\$129,000
Apr	\$306,500	\$140,000	\$285,000	\$118,400	\$319,000	\$134,000	\$290,000	\$135,000
May	\$295,000	\$135,000	\$285,000	\$122,500	\$290,000	\$120,000	\$289,500	\$134,000
Jun	\$309,500	\$133,000	\$300,000	\$125,000	\$311,500	\$133,400		
Jul	\$289,000	\$125,900	\$295,000	\$135,500	\$315,000	\$115,000		
Aug	\$330,000	\$134,500	\$300,000	\$125,000	\$309,000	\$120,000		
Sep	\$277,000	\$125,000	\$305,000	\$127,800	\$280,000	\$130,000		
Oct	\$305,000	\$129,500	\$286,500	\$122,000	\$288,500	\$135,000		
Nov	\$294,500	\$140,500	\$280,200	\$125,000	\$295,000	\$122,000		
Dec	\$295,000	\$126,000	\$281,000	\$122,000	\$306,500	\$127,500		

SOURCE: Honolulu Board of Realtors® Research Department, compiled from MLS data.

# MEDIAN NUMBER OF DAYS ON THE MARKET

## Days between Listing Date and Contract Date

### OAHU, HAWAII: 1987 - 2001, Monthly



1987 - 1996		
Yr:Hf	SF	Condo
1987	59	71
1988	39	49
1989	40	39
1990	42	34
1991	67	68
1992	58	66
1993	58	63
94:H1	59	70
94:H2	56	72
95:H1	68	80
95:H2	77	86
96:H1	81	80
96:H2	75	88

1997		
Month	Single Family	Condo
Jan	91	89
Feb	77	89
Mar	81	83
Apr	69	71
May	63	67
Jun	68	82
Jul	80	73
Aug	69	71
Sep	61	71
Oct	56	85
Nov	62	93
Dec	54	74

1998	
Single Family	Condo
57	91
68	84
65	77
72	92
56	66
52	62
69	64
66	79
72	83
60	82
65	62
63	80

1999	
Single Family	Condo
69	89
70	91
81	93
65	70
74	71
55	60
45	60
46	54
56	65
49	58
48	53
48	59

2000	
Single Family	Condo
53	63
54	72
48	71
50	54
34	48
42	43
39	42
39	51
51	49
47	41
47	45
51	43

2001	
Single Family	Condo
55	44
67	58
64	44
42	41
42	41

SOURCE: Honolulu Board of Realtors® Research Department, compiled from MLS data.

# Monthly and Y-T-D Resales Activity by Neighborhood Groups

## Comparisons Between MAY 2001 and 2000

### SINGLE FAMILY HOMES

Neighborhood Group	2001		2000		Month-to-Month		2001		2000		Year-to-Year	
	Monthly Sales		Monthly Sales		Percentage Changes		YEAR-TO-DATE		YEAR-TO-DATE		Percentage Changes	
	Num Sold	Median Sales Price	Num Sold	Median Sales Price	Number Sold	Median Price	Num Sold	Median Sales Price	Num Sold	Median Sales Price	Number Sold	Median Price
Moanalua-Kalihi	15	\$272,000	14	\$227,500	7.1%	19.6%	76	\$270,000	65	\$230,000	16.9%	17.4%
Honolulu	12	\$348,800	15	\$403,000	-20.0%	-13.4%	74	\$422,500	72	\$414,000	2.8%	2.1%
Kapahulu-Diamond Head	23	\$425,000	24	\$385,000	-4.2%	10.4%	78	\$380,000	71	\$330,000	9.9%	15.2%
Waialae-Kahala	6	\$730,000	12	\$645,000	-50.0%	13.2%	40	\$892,500	54	\$777,500	-25.9%	14.8%
Aina Haina-Kuliouou	6	\$987,500	9	\$800,000	-33.3%	23.4%	38	\$499,000	36	\$725,000	5.6%	-31.2%
Hawaii Kai	28	\$383,800	25	\$448,000	12.0%	-14.3%	104	\$442,500	104	\$462,500	0.0%	-4.3%
Kailua-Waimanalo	26	\$336,000	36	\$365,000	-27.8%	-7.9%	135	\$375,000	147	\$350,000	-8.2%	7.1%
Kaneohe	14	\$331,500	26	\$275,000	-46.2%	20.5%	79	\$305,000	83	\$325,000	-4.8%	-6.2%
Windward Coast	7	\$293,000	7	\$265,000	0.0%	10.6%	45	\$293,000	43	\$279,000	4.7%	5.0%
North Shore	11	\$247,500	6	\$300,000	83.3%	-17.5%	43	\$249,000	46	\$310,000	-6.5%	-19.7%
Wahiawa	4	\$237,500	5	\$195,000	-20.0%	21.8%	28	\$187,000	16	\$195,500	75.0%	-4.3%
Mililani	19	\$280,000	20	\$261,000	-5.0%	7.3%	81	\$270,000	67	\$260,000	20.9%	3.8%
Makaha-Nanakuli	12	\$112,500	16	\$144,200	-25.0%	-22.0%	98	\$115,000	64	\$136,200	53.1%	-15.6%
Ewa Plain	26	\$226,800	26	\$206,000	0.0%	10.1%	133	\$209,000	99	\$201,000	34.3%	4.0%
Makakilo	12	\$245,500	13	\$250,000	-7.7%	-1.8%	37	\$241,000	38	\$215,000	-2.6%	12.1%
Waipahu	30	\$235,000	29	\$230,000	3.4%	2.2%	133	\$220,000	94	\$219,500	41.5%	0.2%
Pearl City-Aiea	21	\$272,500	21	\$255,000	0.0%	6.9%	86	\$280,000	104	\$275,000	-17.3%	1.8%
<b>OVERALL OAHU</b>	<b>272</b>	<b>\$289,500</b>	<b>304</b>	<b>\$290,000</b>	<b>-10.5%</b>	<b>-0.2%</b>	<b>1,308</b>	<b>\$284,500</b>	<b>1,203</b>	<b>\$295,000</b>	<b>8.7%</b>	<b>-3.6%</b>

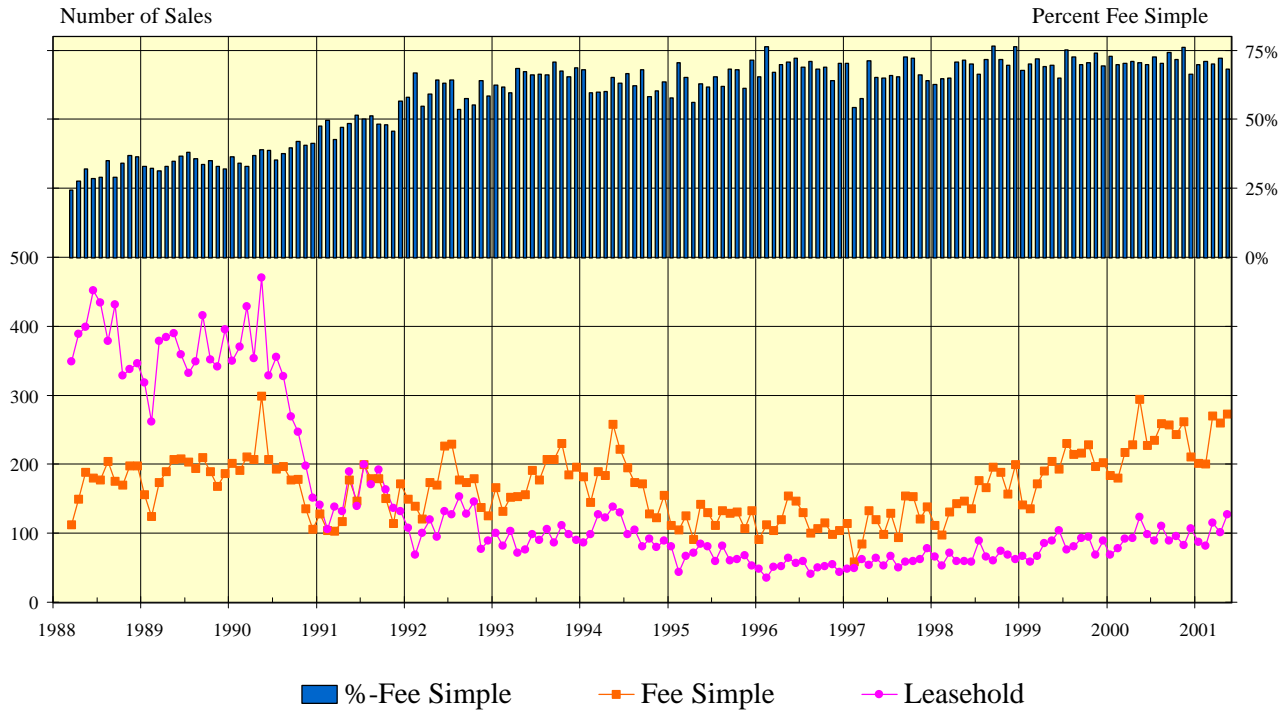
### CONDOMINIUMS

Neighborhood Group	2001		2000		Month-to-Month		2001		2000		Year-to-Year	
	Monthly Sales		Monthly Sales		Percentage Changes		YEAR-TO-DATE		YEAR-TO-DATE		Percentage Changes	
	Num Sold	Median Sales Price	Num Sold	Median Sales Price	Number Sold	Median Price	Num Sold	Median Sales Price	Num Sold	Median Sales Price	Number Sold	Median Price
Moanalua-Salt Lake	20	\$123,500	17	\$122,000	17.6%	1.2%	88	\$130,000	62	\$120,000	41.9%	8.3%
Kalihi-Palama	16	\$101,000	9	\$195,000	77.8%	-48.2%	68	\$84,500	45	\$85,000	51.1%	-0.6%
Downtown-Nuuanu	21	\$190,000	14	\$152,500	50.0%	24.6%	91	\$180,000	89	\$195,000	2.2%	-7.7%
Ala Moana-Kakaako	23	\$163,000	21	\$310,000	9.5%	-47.4%	102	\$216,100	88	\$215,000	15.9%	0.5%
Waikiki	68	\$147,500	99	\$128,000	-31.3%	15.2%	331	\$150,000	320	\$130,000	3.4%	15.4%
Makiki-Moilili	54	\$143,500	59	\$170,000	-8.5%	-15.6%	202	\$145,900	200	\$157,000	1.0%	-7.1%
Kapahulu-Kuliouou	17	\$360,000	16	\$210,000	6.3%	71.4%	84	\$283,000	84	\$245,200	0.0%	15.4%
Hawaii Kai	24	\$258,100	17	\$254,000	41.2%	1.6%	79	\$240,000	82	\$232,500	-3.7%	3.2%
Kailua-Waimanalo	21	\$220,000	10	\$144,000	110.0%	52.8%	64	\$183,000	46	\$149,500	39.1%	22.4%
Kaneohe	22	\$176,000	19	\$115,000	15.8%	53.0%	72	\$143,500	59	\$135,000	22.0%	6.3%
Windward Coast	1	\$67,900	2	\$34,000	-50.0%	99.7%	8	\$103,800	3	\$35,000	166.7%	196.6%
North Shore	5	\$123,000	4	\$117,800	25.0%	4.4%	25	\$140,000	13	\$135,000	92.3%	3.7%
Wahiawa	3	\$44,900	3	\$36,000	0.0%	24.7%	10	\$42,000	16	\$37,500	-37.5%	12.0%
Mililani	23	\$90,500	30	\$96,000	-23.3%	-5.7%	114	\$98,300	109	\$91,000	4.6%	8.0%
Makaha-Nanakuli	19	\$59,000	16	\$30,500	18.8%	93.4%	62	\$48,800	74	\$31,000	-16.2%	57.4%
Ewa Plain	19	\$88,500	14	\$76,500	35.7%	15.7%	82	\$87,800	53	\$82,400	54.7%	6.6%
Makakilo	4	\$113,500	9	\$98,000	-55.6%	15.8%	29	\$91,400	35	\$98,000	-17.1%	-6.7%
Waipahu	19	\$61,000	23	\$72,000	-17.4%	-15.3%	80	\$88,500	76	\$77,000	5.3%	14.9%
Pearl City-Aiea	21	\$86,000	35	\$87,500	-40.0%	-1.7%	125	\$71,000	105	\$85,000	19.0%	-16.5%
<b>OVERALL OAHU</b>	<b>400</b>	<b>\$134,000</b>	<b>417</b>	<b>\$120,000</b>	<b>-4.1%</b>	<b>11.7%</b>	<b>1,716</b>	<b>\$132,000</b>	<b>1,559</b>	<b>\$125,000</b>	<b>10.1%</b>	<b>5.6%</b>

SOURCE: Honolulu Board of Realtors® Research Department, compiled from MLS data.

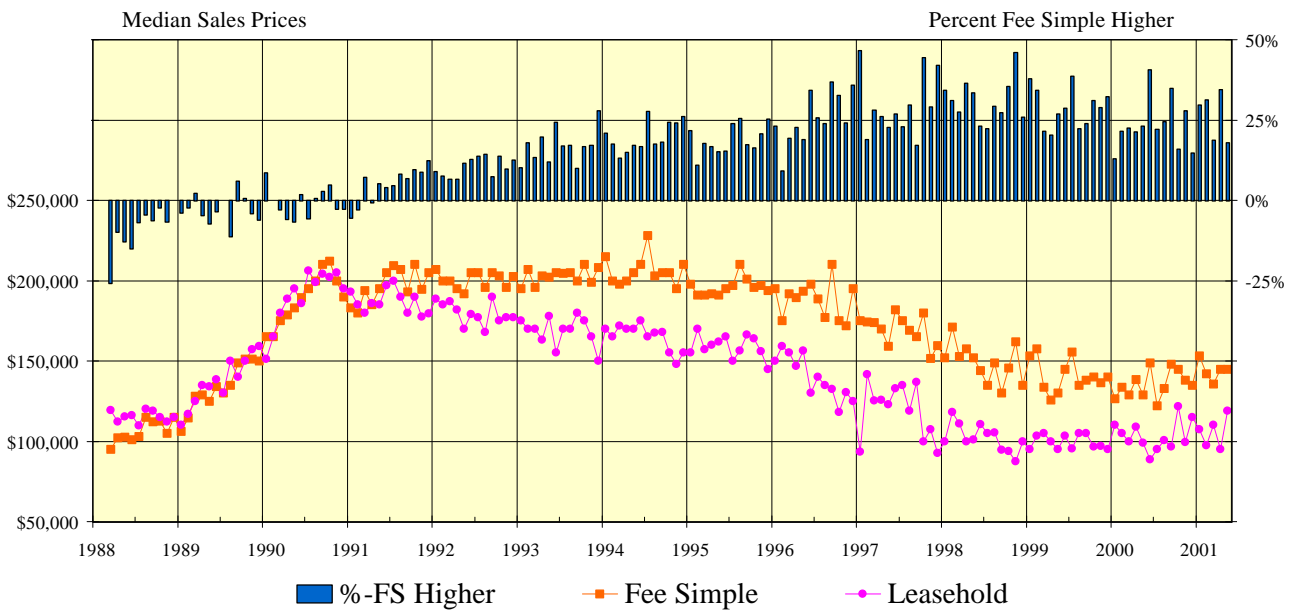
# CONDOMINIUM SALES VOLUME

## LEASEHOLD vs FEE SIMPLE, OAHU: 1988 - 2001, Monthly



# CONDOMINIUM MEDIAN SALES PRICES

## LEASEHOLD vs FEE SIMPLE, OAHU: 1988 - 2001, Monthly



**SOURCE: Honolulu Board of Realtors® Research Department, compiled from MLS data.**

# Statistical Summary of CONDOMINIUM RESALES

## YEAR-TO-DATE Through May 31, 2001

NUMBER OF SALES				MEDIAN SALES PRICE			AVERAGE SALES PRICE		
		CHANGES				Percent			Percent
2001	2000	Num	Percent	2001	2000	Change	2001	2000	Change

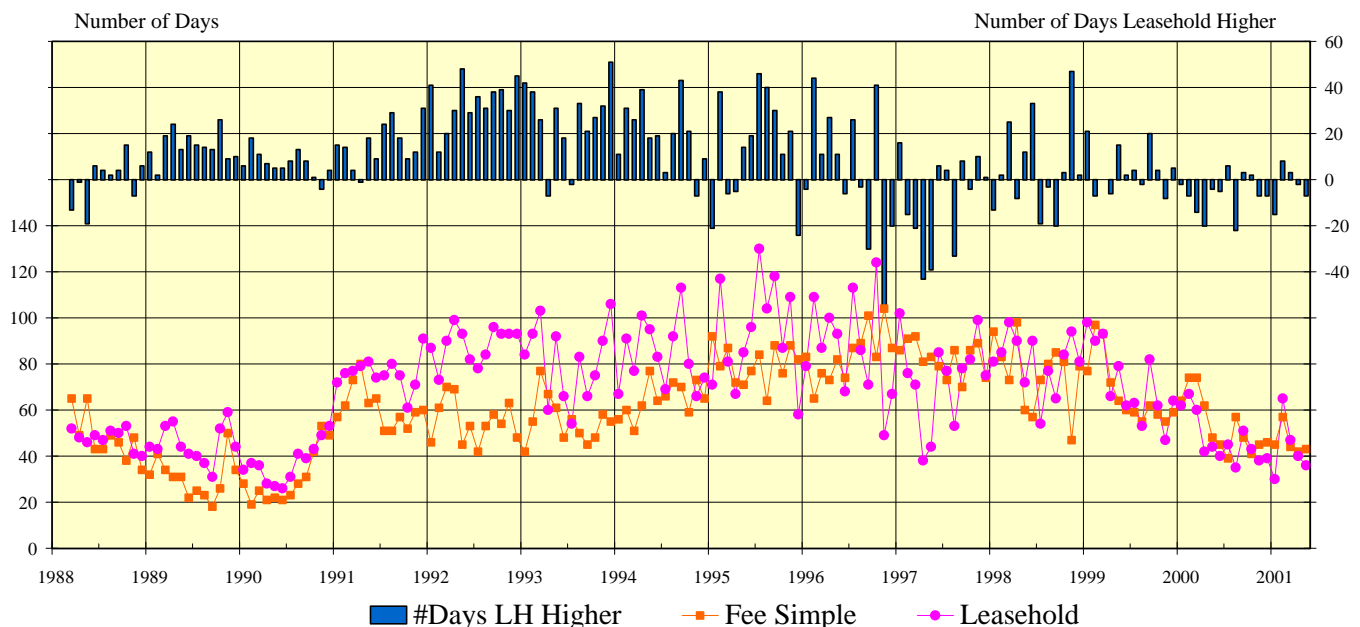
FEE SIMPLE CONDOMINIUMS										
<b>OVERALL OAHU</b>	<b>1,204</b>	<b>1,103</b>	<b>101</b>	<b>9.2%</b>	<b>\$145,000</b>	<b>\$130,800</b>	<b>10.9%</b>	<b>\$180,709</b>	<b>\$177,334</b>	<b>1.9%</b>
Metro Oahu	579	523	56	10.7%	\$172,000	\$160,000	7.5%	\$210,145	\$212,188	-1.0%
East Oahu	101	114	-13	-11.4%	\$285,000	\$246,000	15.9%	\$359,296	\$320,225	12.2%
Windward Oahu	94	67	27	40.3%	\$184,500	\$179,900	2.6%	\$182,705	\$189,405	-3.5%
North Shore	12	6	6	100.0%	\$117,500	\$176,500	-33.4%	\$128,098	\$136,333	-6.0%
Leeward Oahu	418	393	25	6.4%	\$87,000	\$82,400	5.6%	\$97,844	\$88,068	11.1%

LEASEHOLD CONDOMINIUMS										
<b>OVERALL OAHU</b>	<b>512</b>	<b>455</b>	<b>57</b>	<b>12.5%</b>	<b>\$108,800</b>	<b>\$105,000</b>	<b>3.6%</b>	<b>\$135,364</b>	<b>\$137,658</b>	<b>-1.7%</b>
Metro Oahu	303	281	22	7.8%	\$113,000	\$112,000	0.9%	\$131,630	\$140,183	-6.1%
East Oahu	62	52	10	19.2%	\$180,000	\$203,800	-11.7%	\$251,331	\$264,450	-5.0%
Windward Oahu	50	41	9	22.0%	\$106,800	\$89,000	20.0%	\$128,370	\$103,310	24.3%
North Shore	13	7	6	85.7%	\$140,000	\$127,500	9.8%	\$146,885	\$144,557	1.6%
Leeward Oahu	84	74	10	13.5%	\$53,500	\$47,200	13.3%	\$65,618	\$57,352	14.4%

## CONDOMINIUM DAYS ON MARKET

between Listing Date and Contract Date

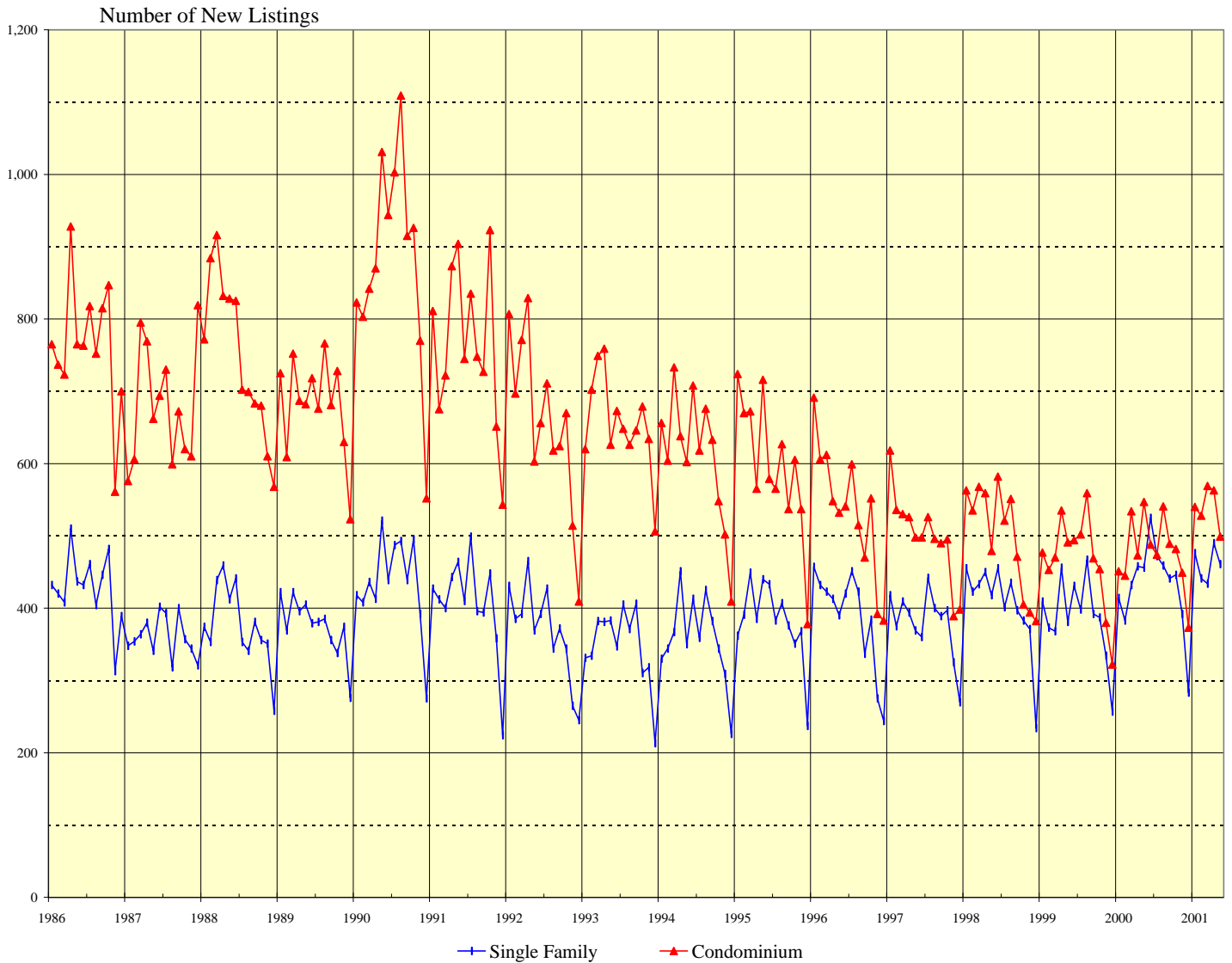
LEASEHOLD vs FEE SIMPLE, OAHU: 1988 - 2001, Monthly



**SOURCE: Honolulu Board of Realtors® Research Department, compiled from MLS data.**

# NUMBER OF NEW RESIDENTIAL LISTINGS

## OAHU, HAWAII: 1986 - 2001, Monthly



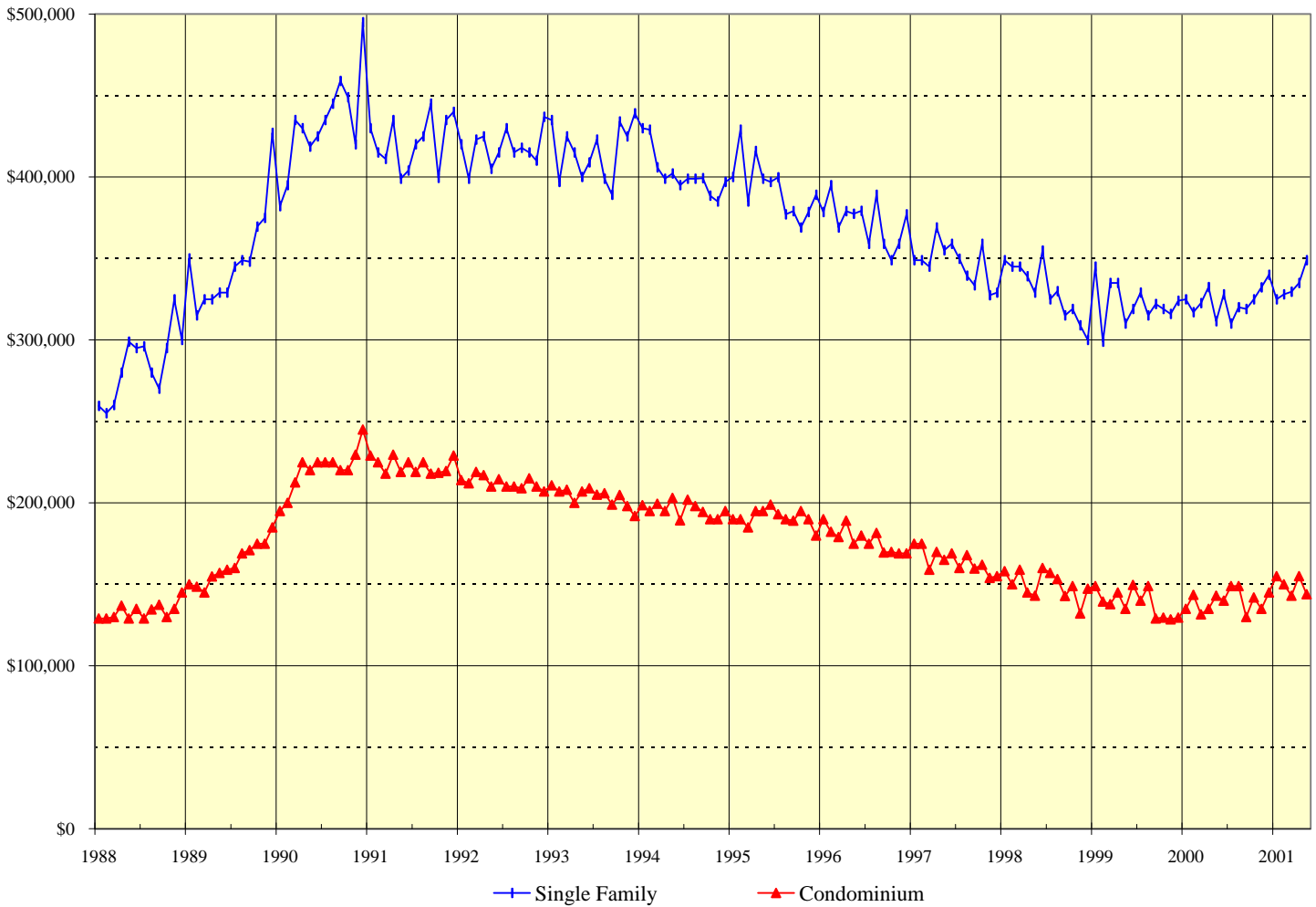
1987 - 1996		
Yr:Hf	SF	Condo
1986	5,134	9,174
1987	4,322	8,152
1988	4,518	8,999
1989	4,503	8,177
1990	5,216	10,588
1991	4,875	9,157
1992	4,431	7,909
1993	4,181	7,868
94:H1	2,255	3,941
94:H2	2,045	3,386
95:H1	2,460	3,926
95:H2	2,122	3,249
95:H1	2,535	3,530
95:H2	2,114	2,911

Month	1997		1998		1999		2000		2001	
	Single Family	Condo	Single Family	Condo	Single Family	Condo	Single Family	Condo	Single Family	Condo
Jan	418	618	455	563	409	477	414	451	476	540
Feb	375	536	423	535	373	453	383	445	441	528
Mar	409	530	433	568	368	470	432	534	434	569
Apr	394	526	450	559	456	535	458	473	490	563
May	369	498	418	479	381	491	456	547	461	499
Jun	360	498	455	582	431	494	525	488		
Jul	442	526	401	521	398	502	472	474		
Aug	400	496	435	551	467	559	459	541		
Sep	389	490	397	471	392	469	441	489		
Oct	397	495	383	405	387	454	446	482		
Nov	325	389	371	394	334	380	392	449		
Dec	270	398	234	382	257	322	283	373		

SOURCE: Honolulu Board of Realtors® Research Department, compiled from MLS data.

# MEDIAN LIST PRICES OF NEW RESIDENTIAL LISTINGS

## OAHU, HAWAII: 1988 - 2001, Monthly



1988 - 1997		
Yr:Hf	SF	Condo
1988	\$284,000	\$133,800
1989	\$349,000	\$162,500
1990	\$429,000	\$220,000
1991	\$421,000	\$222,000
1992	\$418,000	\$213,000
1993	\$416,000	\$204,000
94:H1	\$415,000	\$195,900
94:H2	\$400,000	\$194,000
95:H1	\$404,300	\$192,000
95:H2	\$382,000	\$189,500
96:H1	\$379,600	\$182,500
96:H2	\$365,000	\$172,300
97:H1	\$350,000	\$169,000
97:H2	\$349,000	\$161,000

	1998		1999		2000		2001	
	Single		Single		Single		Single	
Month	Family	Condo	Family	Condo	Family	Condo	Family	Condo
Jan	\$349,000	\$158,000	\$345,000	\$149,000	\$325,000	\$135,000	\$325,000	\$155,000
Feb	\$345,000	\$150,000	\$299,000	\$139,500	\$317,000	\$143,500	\$328,000	\$150,000
Mar	\$345,000	\$159,000	\$335,000	\$137,800	\$322,500	\$131,500	\$329,500	\$143,000
Apr	\$339,000	\$145,000	\$335,000	\$145,000	\$332,500	\$135,000	\$335,000	\$155,000
May	\$329,000	\$143,000	\$310,000	\$134,900	\$311,500	\$143,000	\$349,000	\$143,900
Jun	\$354,900	\$160,000	\$319,000	\$149,700	\$328,000	\$140,000		
Jul	\$325,000	\$157,000	\$329,000	\$140,000	\$310,000	\$149,000		
Aug	\$330,000	\$153,300	\$315,000	\$149,000	\$320,000	\$149,000		
Sep	\$315,000	\$142,900	\$322,000	\$129,000	\$319,000	\$130,000		
Oct	\$319,000	\$149,000	\$319,000	\$129,500	\$325,000	\$142,000		
Nov	\$309,000	\$132,000	\$316,000	\$128,500	\$332,200	\$135,000		
Dec	\$300,000	\$147,300	\$324,000	\$129,500	\$339,900	\$145,000		

SOURCE: Honolulu Board of Realtors® Research Department, compiled from MLS data.

# New Listing Activity by Neighborhood Groups

## Comparisons Between MAY 2001 and 2000

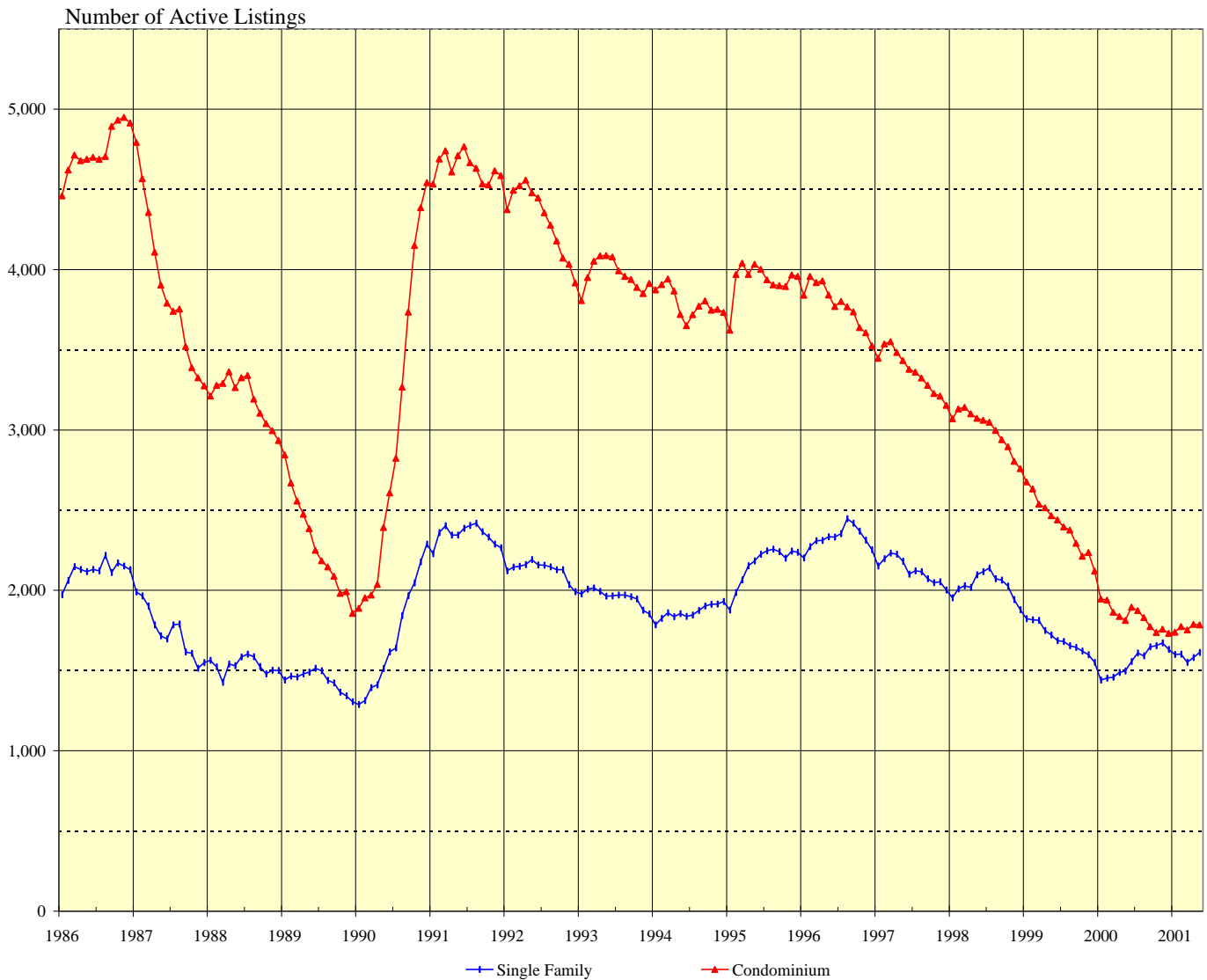
SINGLE FAMILY HOMES						
Neighborhood Group	Current Month		Same Month Last Year		Changes Since Last Year	
	Number	Median List Price	Number	Median List Price	Number	Median List Price
Moanalua-Kalihi	24	\$267,000	30	\$282,000	-20.0%	-5.3%
Honolulu	29	\$440,000	40	\$499,500	-27.5%	-11.9%
Kapahulu-Diamond Head	28	\$495,000	29	\$475,000	-3.4%	4.2%
Waialae-Kahala	27	\$945,000	20	\$1,160,000	35.0%	-18.5%
Aina Haina-Kuliouou	19	\$1,195,000	16	\$914,500	18.8%	30.7%
Hawaii Kai	32	\$461,000	27	\$439,000	18.5%	5.0%
Kailua-Waimanalo	46	\$459,300	50	\$407,500	-8.0%	12.7%
Kaneohe	31	\$369,000	25	\$309,000	24.0%	19.4%
Windward Coast	16	\$243,500	13	\$325,000	23.1%	-25.1%
North Shore	15	\$425,000	18	\$242,500	-16.7%	75.3%
Wahiawa	14	\$244,500	8	\$195,000	75.0%	25.4%
Mililani	35	\$279,000	27	\$282,000	29.6%	-1.1%
Makaha-Nanakuli	26	\$154,500	26	\$127,500	0.0%	21.2%
Ewa Plain	45	\$233,000	43	\$228,000	4.7%	2.2%
Makakilo	9	\$289,000	14	\$244,900	-35.7%	18.0%
Waipahu	31	\$269,000	43	\$230,000	-27.9%	17.0%
Pearl City-Aiea	34	\$298,800	27	\$275,000	25.9%	8.7%
<b>OVERALL OAHU</b>	<b>461</b>	<b>\$349,000</b>	<b>456</b>	<b>\$311,500</b>	<b>1.1%</b>	<b>12.0%</b>

CONDOMINIUMS						
Neighborhood Group	Current Month		Same Month Last Year		Changes Since Last Year	
	Number	Median List Price	Number	Median List Price	Number	Median List Price
Moanalua-Salt Lake	16	\$131,500	24	\$129,500	-33.3%	1.5%
Kalihi-Palama	17	\$259,000	21	\$86,000	-19.0%	201.2%
Downtown-Nuuanu	28	\$160,500	31	\$185,000	-9.7%	-13.2%
Ala Moana-Kakaako	27	\$320,000	18	\$326,900	50.0%	-2.1%
Waikiki	92	\$160,000	90	\$177,000	2.2%	-9.6%
Makiki-Moilili	78	\$166,300	95	\$189,000	-17.9%	-12.0%
Kapahulu-Kuliouou	19	\$249,000	20	\$369,500	-5.0%	-32.6%
Hawaii Kai	26	\$263,500	28	\$297,000	-7.1%	-11.3%
Kailua-Waimanalo	11	\$190,000	12	\$231,700	-8.3%	-18.0%
Kaneohe	15	\$125,000	21	\$125,000	-28.6%	0.0%
Windward Coast	3	\$105,000	1	\$319,000	200.0%	-67.1%
North Shore	7	\$116,000	4	\$192,300	75.0%	-39.7%
Wahiawa	4	\$40,000	5	\$42,500	-20.0%	-5.9%
Mililani	29	\$132,000	32	\$99,900	-9.4%	32.1%
Makaha-Nanakuli	23	\$66,000	25	\$44,000	-8.0%	50.0%
Ewa Plain	32	\$95,500	23	\$93,000	39.1%	2.7%
Makakilo	9	\$114,500	10	\$97,000	-10.0%	18.0%
Waipahu	29	\$122,500	42	\$102,200	-31.0%	19.9%
Pearl City-Aiea	34	\$88,000	45	\$78,000	-24.4%	12.8%
<b>OVERALL OAHU</b>	<b>499</b>	<b>\$143,900</b>	<b>547</b>	<b>\$143,000</b>	<b>-8.8%</b>	<b>0.6%</b>

SOURCE: Honolulu Board of Realtors® Research Department, compiled from MLS data.

# INVENTORY OF ACTIVE RESIDENTIAL LISTINGS

## OAHU, HAWAII: 1986 - 2001, Monthly



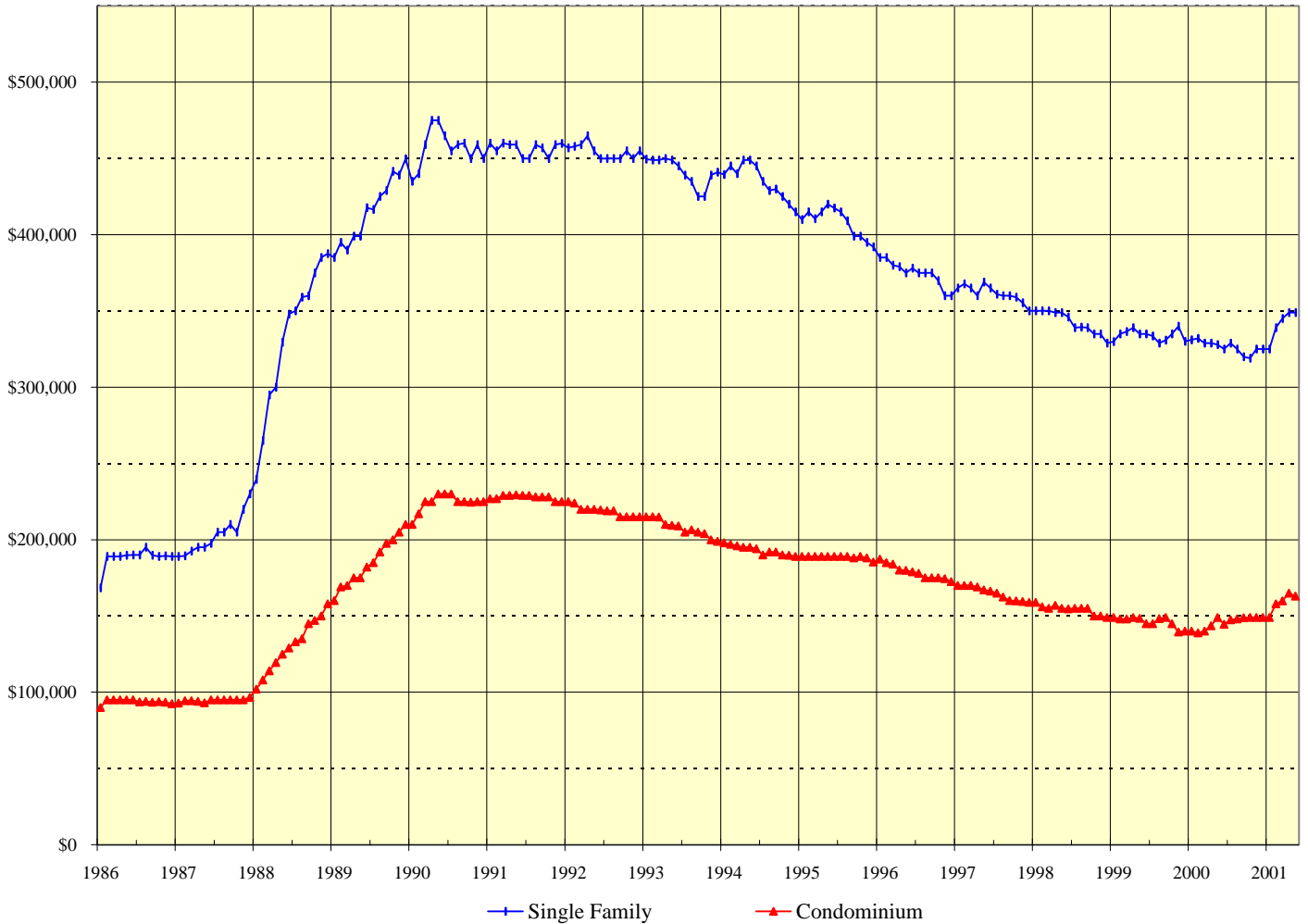
1986 - 1996		
Yr:Hf	SF	Condo
1986	2,122	4,745
1987	1,743	3,877
1988	1,531	3,195
1989	1,435	2,286
1990	1,708	2,979
1991	2,345	4,634
1992	2,126	4,309
1993	1,958	3,967
94:H1	1,833	3,826
94:H2	1,897	3,755
95:H1	2,082	3,939
95:H2	2,237	3,927
96:H1	2,294	3,876
96:H2	2,359	3,679

Month	1997		1998		1999		2000		2001	
	Single Family	Condo	Single Family	Condo	Single Family	Condo	Single Family	Condo	Single Family	Condo
Jan	2,152	3,447	1,953	3,069	1,824	2,676	1,440	1,947	1,600	1,740
Feb	2,198	3,537	2,010	3,130	1,816	2,632	1,453	1,939	1,602	1,774
Mar	2,232	3,550	2,028	3,142	1,813	2,537	1,459	1,863	1,552	1,753
Apr	2,226	3,484	2,019	3,101	1,750	2,515	1,488	1,837	1,581	1,789
May	2,182	3,433	2,098	3,073	1,722	2,465	1,497	1,812	1,613	1,785
Jun	2,101	3,379	2,117	3,060	1,686	2,439	1,556	1,895		
Jul	2,122	3,361	2,140	3,048	1,682	2,396	1,609	1,875		
Aug	2,116	3,323	2,073	2,998	1,655	2,376	1,592	1,830		
Sep	2,072	3,279	2,063	2,939	1,644	2,293	1,648	1,774		
Oct	2,048	3,227	2,027	2,895	1,622	2,213	1,655	1,738		
Nov	2,054	3,212	1,943	2,804	1,599	2,236	1,672	1,759		
Dec	2,002	3,154	1,879	2,758	1,552	2,120	1,632	1,733		

**SOURCE: Honolulu Board of Realtors® Research Department, compiled from MLS data.**

# MEDIAN LIST PRICES OF THE ACTIVE INVENTORY

## OAHU, HAWAII: 1986 - 2001, Monthly



1986 - 1997		
Yr:Hf	SF	Condo
1986	\$188,300	\$93,900
1987	\$202,500	\$94,600
1988	\$332,700	\$130,300
1989	\$415,100	\$184,300
1990	\$457,700	\$224,300
1991	\$456,500	\$227,800
1992	\$454,500	\$218,100
1993	\$441,300	\$207,800
1994	\$435,100	\$193,200
1995	\$406,800	\$188,400
96:H1	\$380,333	\$182,500
96:H2	\$369,200	\$175,000
97:H1	\$365,000	\$168,500
97:H2	\$358,000	\$161,000

Month	1998		1999		2000		2001	
	Single Family	Condo	Single Family	Condo	Single Family	Condo	Single Family	Condo
Jan	\$350,000	\$159,000	\$329,900	\$149,000	\$331,000	\$140,000	\$325,000	\$149,000
Feb	\$350,000	\$156,000	\$335,000	\$148,000	\$332,000	\$139,000	\$339,000	\$158,000
Mar	\$350,000	\$155,000	\$336,500	\$148,000	\$329,000	\$140,000	\$345,000	\$159,900
Apr	\$349,000	\$157,000	\$339,000	\$149,000	\$329,000	\$143,500	\$349,000	\$164,900
May	\$349,000	\$155,000	\$335,000	\$148,500	\$328,000	\$149,000	\$349,000	\$163,000
Jun	\$346,000	\$154,700	\$335,000	\$145,000	\$325,000	\$144,500		
Jul	\$339,000	\$155,000	\$333,500	\$145,000	\$329,000	\$147,500		
Aug	\$339,500	\$155,000	\$329,000	\$148,300	\$325,000	\$148,000		
Sep	\$339,000	\$155,000	\$330,800	\$149,000	\$320,000	\$148,800		
Oct	\$335,000	\$150,000	\$335,000	\$145,000	\$319,000	\$149,000		
Nov	\$335,000	\$150,000	\$339,900	\$139,500	\$325,000	\$149,000		
Dec	\$329,000	\$149,000	\$330,000	\$140,000	\$325,000	\$149,000		

**SOURCE: Honolulu Board of Realtors® Research Department, compiled from MLS data.**

# Availability of Housing on Oahu

Comparisons Between MAY 2001 and 2000

## SINGLE FAMILY HOMES

Neighborhood Group	Current Month		Last Month		Changes Since Last Month		Same Month Last Year		Changes Since Last Year	
	Number	Median	Number	Median	Number	MLP	Number	Median	Number	MLP
	Active	List Price	Active	List Price	Active	MLP	Active	List Price	Active	MLP
Moanalua-Kalihi	109	\$279,000	114	\$289,400	-4.4%	-3.6%	115	\$294,900	-5.2%	-5.4%
Honolulu	103	\$529,000	106	\$490,000	-2.8%	8.0%	117	\$500,000	-12.0%	5.8%
Kapahulu-Diamond Head	94	\$572,500	94	\$539,500	0.0%	6.1%	95	\$509,000	-1.1%	12.5%
Waialae-Kahala	93	\$985,000	76	\$999,500	22.4%	-1.5%	62	\$999,000	50.0%	-1.4%
Aina Haina-Kuliouou	61	\$1,099,000	62	\$849,000	-1.6%	29.4%	53	\$1,199,000	15.1%	-8.3%
Hawaii Kai	95	\$469,000	82	\$513,500	15.9%	-8.7%	80	\$514,500	18.8%	-8.8%
Kailua-Waimanalo	133	\$475,000	140	\$496,900	-5.0%	-4.4%	126	\$383,500	5.6%	23.9%
Kaneohe	101	\$375,000	98	\$391,000	3.1%	-4.1%	79	\$379,500	27.8%	-1.2%
Windward Coast	80	\$298,500	71	\$305,000	12.7%	-2.1%	78	\$332,500	2.6%	-10.2%
North Shore	92	\$457,500	102	\$457,500	-9.8%	0.0%	79	\$350,000	16.5%	30.7%
Wahiawa	40	\$249,000	30	\$249,500	33.3%	-0.2%	30	\$235,000	33.3%	6.0%
Mililani	70	\$274,000	68	\$279,000	2.9%	-1.8%	68	\$289,000	2.9%	-5.2%
Makaha-Nanakuli	147	\$165,000	152	\$160,000	-3.3%	3.1%	113	\$165,000	30.1%	0.0%
Ewa Plain	146	\$229,900	150	\$232,000	-2.7%	-0.9%	150	\$235,000	-2.7%	-2.2%
Makakilo	44	\$257,500	43	\$269,000	2.3%	-4.3%	43	\$262,000	2.3%	-1.7%
Waipahu	90	\$285,000	83	\$285,000	8.4%	0.0%	126	\$245,000	-28.6%	16.3%
Pearl City-Aiea	115	\$310,000	110	\$317,400	4.5%	-2.3%	83	\$315,000	38.6%	-1.6%
<b>OVERALL OAHU</b>	<b>1,613</b>	<b>\$349,000</b>	<b>1,581</b>	<b>\$349,000</b>	<b>2.0%</b>	<b>0.0%</b>	<b>1,497</b>	<b>\$328,000</b>	<b>7.7%</b>	<b>6.4%</b>

## CONDOMINIUMS

Neighborhood Group	Current Month		Last Month		Changes Since Last Month		Same Month Last Year		Changes Since Last Year	
	Number	Median	Number	Median	Number	MLP	Number	Median	Number	MLP
	Active	List Price	Active	List Price	Active	MLP	Active	List Price	Active	MLP
Moanalua-Salt Lake	92	\$115,000	83	\$127,000	10.8%	-9.4%	91	\$115,000	1.1%	0.0%
Kalihi-Palama	69	\$185,000	67	\$160,000	3.0%	15.6%	66	\$115,000	4.5%	60.9%
Downtown-Nuuanu	149	\$208,000	140	\$209,500	6.4%	-0.7%	120	\$191,800	24.2%	8.4%
Ala Moana-Kakaako	95	\$219,000	102	\$190,000	-6.9%	15.3%	119	\$240,000	-20.2%	-8.8%
Waikiki	489	\$170,000	470	\$170,000	4.0%	0.0%	404	\$159,800	21.0%	6.4%
Makiki-Moiliili	302	\$165,000	312	\$165,000	-3.2%	0.0%	290	\$157,000	4.1%	5.1%
Kapahulu-Kuliouou	95	\$390,000	90	\$392,500	5.6%	-0.6%	85	\$289,000	11.8%	34.9%
Hawaii Kai	84	\$261,000	84	\$260,000	0.0%	0.4%	55	\$237,500	52.7%	9.9%
Kailua-Waimanalo	28	\$184,500	34	\$179,500	-17.6%	2.8%	32	\$169,000	-12.5%	9.2%
Kaneohe	36	\$194,800	45	\$199,000	-20.0%	-2.1%	73	\$183,900	-50.7%	5.9%
Windward Coast	11	\$95,000	9	\$95,000	22.2%	0.0%	7	\$49,000	57.1%	93.9%
North Shore	24	\$141,200	25	\$145,000	-4.0%	-2.6%	25	\$149,500	-4.0%	-5.6%
Wahiawa	9	\$55,000	10	\$50,500	-10.0%	8.9%	6	\$40,800	50.0%	34.8%
Mililani	54	\$126,500	54	\$135,800	0.0%	-6.8%	71	\$115,000	-23.9%	10.0%
Makaha-Nanakuli	70	\$52,300	73	\$54,500	-4.1%	-4.0%	59	\$65,000	18.6%	-19.5%
Ewa Plain	41	\$118,000	39	\$125,000	5.1%	-5.6%	52	\$98,000	-21.2%	20.4%
Makakilo	13	\$110,000	19	\$108,900	-31.6%	1.0%	19	\$117,500	-31.6%	-6.4%
Waipahu	57	\$119,000	56	\$116,500	1.8%	2.1%	85	\$100,000	-32.9%	19.0%
Pearl City-Aiea	67	\$99,900	77	\$105,000	-13.0%	-4.9%	153	\$99,500	-56.2%	0.4%
<b>OVERALL OAHU</b>	<b>1,785</b>	<b>\$163,000</b>	<b>1,789</b>	<b>\$164,900</b>	<b>-0.2%</b>	<b>-1.2%</b>	<b>1,812</b>	<b>\$149,000</b>	<b>-1.5%</b>	<b>9.4%</b>

SOURCE: Honolulu Board of Realtors® Research Department, compiled from MLS data.

# Available Condominiums on Oahu by Land Tenure

## Comparisons Between MAY 2001 and 2000

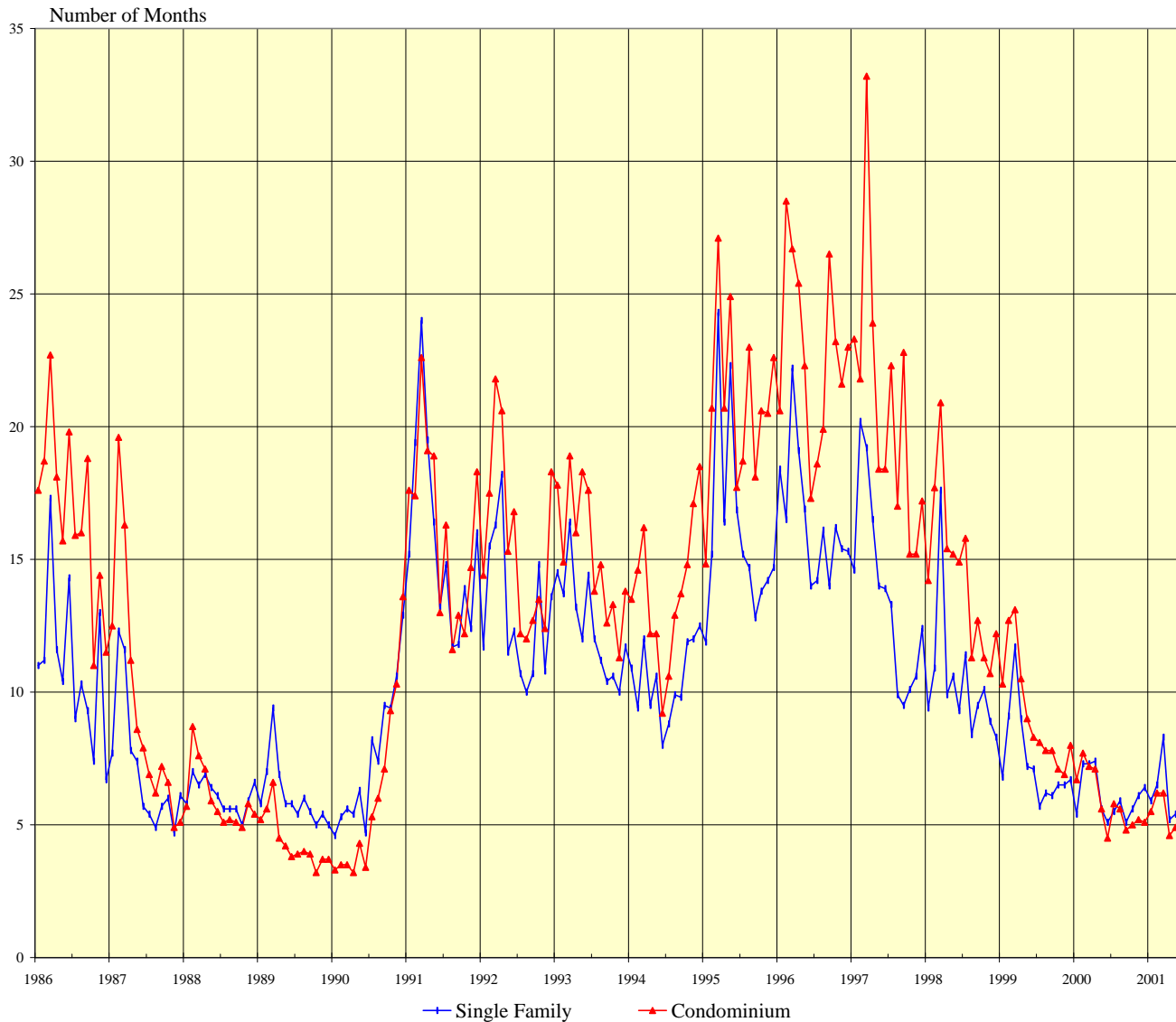
<b>FEE SIMPLE CONDOMINIUMS</b>									
Neighborhood Group	Current Month			Same Month Last Year			Changes from Last Year		
	Number Active	Median List Price	Percent of Inventory	Number Active	Median List Price	Percent of Inventory	Number Active	MLP	Tenure Percent
Moanalua-Salt Lake	88	\$124,000	95.7%	84	\$126,300	92.3%	4.8%	-1.8%	3.3%
Kalihi-Palama	58	\$229,500	84.1%	56	\$137,500	84.8%	3.6%	66.9%	-0.8%
Downtown-Nuuanu	106	\$230,300	71.1%	82	\$196,000	68.3%	29.3%	17.5%	2.8%
Ala Moana-Kakaako	76	\$249,500	80.0%	85	\$325,000	71.4%	-10.6%	-23.2%	8.6%
Waikiki	217	\$210,000	44.4%	184	\$195,000	45.5%	17.9%	7.7%	-1.2%
Makiki-Moilili	246	\$175,000	81.5%	228	\$164,000	78.6%	7.9%	6.7%	2.8%
Kapahulu-Kuliouou	53	\$319,000	55.8%	52	\$252,500	61.2%	1.9%	26.3%	-5.4%
Hawaii Kai	64	\$279,000	76.2%	43	\$265,000	78.2%	48.8%	5.3%	-2.0%
Kailua-Waimanalo	16	\$199,900	57.1%	22	\$189,500	68.8%	-27.3%	5.5%	-11.6%
Kaneohe	26	\$195,800	72.2%	42	\$177,000	57.5%	-38.1%	10.6%	14.7%
Windward Coast	7	\$99,000	63.6%	0	N/A	0.0%	N/A	N/A	63.6%
North Shore	5	\$179,000	20.8%	7	\$189,000	28.0%	-28.6%	-5.3%	-7.2%
Wahiawa	7	\$59,000	77.8%	5	\$39,000	83.3%	40.0%	51.3%	-5.6%
Mililani	52	\$128,500	96.3%	71	\$115,000	100.0%	-26.8%	11.7%	-3.7%
Makaha-Nanakuli	58	\$55,500	82.9%	49	\$65,000	83.1%	18.4%	-14.6%	-0.2%
Ewa Plain	41	\$118,000	100.0%	52	\$98,000	100.0%	-21.2%	20.4%	0.0%
Makakilo	12	\$112,500	92.3%	19	\$117,500	100.0%	-36.8%	-4.3%	-7.7%
Waipahu	57	\$119,000	100.0%	84	\$101,500	98.8%	-32.1%	17.2%	1.2%
Pearl City-Aiea	52	\$117,000	77.6%	116	\$108,900	75.8%	-55.2%	7.4%	1.8%
<b>All FEE SIMPLE</b>	<b>1,241</b>	<b>\$175,000</b>	<b>69.5%</b>	<b>1,281</b>	<b>\$155,000</b>	<b>70.7%</b>	<b>-3.1%</b>	<b>12.9%</b>	<b>-1.2%</b>

<b>LEASEHOLD CONDOMINIUMS</b>									
Neighborhood Group	Current Month			Same Month Last Year			Changes from Last Year		
	Number Active	Median List Price	Percent of Inventory	Number Active	Median List Price	Percent of Inventory	Number Active	MLP	Tenure Percent
Moanalua-Salt Lake	4	\$84,500	4.3%	7	\$69,000	7.7%	-42.9%	22.5%	-3.3%
Kalihi-Palama	11	\$115,000	15.9%	10	\$42,400	15.2%	10.0%	171.2%	0.8%
Downtown-Nuuanu	43	\$129,000	28.9%	38	\$174,500	31.7%	13.2%	-26.1%	-2.8%
Ala Moana-Kakaako	19	\$114,500	20.0%	34	\$162,000	28.6%	-44.1%	-29.3%	-8.6%
Waikiki	272	\$140,000	55.6%	220	\$130,000	54.5%	23.6%	7.7%	1.2%
Makiki-Moilili	56	\$119,400	18.5%	62	\$116,500	21.4%	-9.7%	2.5%	-2.8%
Kapahulu-Kuliouou	42	\$396,000	44.2%	33	\$350,000	38.8%	27.3%	13.1%	5.4%
Hawaii Kai	20	\$198,500	23.8%	12	\$174,000	21.8%	66.7%	14.1%	2.0%
Kailua-Waimanalo	12	\$137,500	42.9%	10	\$96,000	31.3%	20.0%	43.2%	11.6%
Kaneohe	10	\$156,000	27.8%	31	\$192,000	42.5%	-67.7%	-18.8%	-14.7%
Windward Coast	4	\$74,300	36.4%	7	\$49,000	100.0%	-42.9%	51.6%	-63.6%
North Shore	19	\$137,500	79.2%	18	\$145,000	72.0%	5.6%	-5.2%	7.2%
Wahiawa	2	\$50,500	22.2%	1	\$49,900	16.7%	100.0%	1.2%	5.6%
Mililani	2	\$52,500	3.7%	0	N/A	0.0%	N/A	N/A	3.7%
Makaha-Nanakuli	12	\$40,500	17.1%	10	\$64,000	16.9%	20.0%	-36.7%	0.2%
Ewa Plain	0	N/A	0.0%	0	N/A	0.0%	N/A	N/A	0.0%
Makakilo	1	\$99,500	7.7%	0	N/A	0.0%	N/A	N/A	7.7%
Waipahu	0	N/A	0.0%	1	\$27,900	1.2%	N/A	N/A	-1.2%
Pearl City-Aiea	15	\$69,000	22.4%	37	\$59,900	24.2%	-59.5%	15.2%	-1.8%
<b>All LEASEHOLD</b>	<b>544</b>	<b>\$135,000</b>	<b>30.5%</b>	<b>531</b>	<b>\$130,000</b>	<b>29.3%</b>	<b>2.4%</b>	<b>3.8%</b>	<b>1.2%</b>

**SOURCE: Honolulu Board of Realtors® Research Department, compiled from MLS data.**

# MONTHS OF INVENTORY REMAINING

## OAHU, HAWAII: 1986 - 2001, Monthly



1986 - 1995		
Yr:Hf	SF	Condo
1986	11.0	16.7
1987	7.1	9.4
1988	6.1	6.0
1989	6.1	4.4
1990	7.5	6.1
1991	15.7	16.2
1992	13.0	15.6
93:H1	14.0	17.3
93:H2	11.0	13.3
94:H1	10.1	13.0
94:H2	10.8	14.6
95:H1	17.8	21.0
95:H2	14.2	20.6

Month	1996		1997		1998		1999		2000		2001	
	SF	CO	SF	CO	SF	CO	SF	CO	SF	CO	SF	CO
Jan	18.4	20.6	14.6	23.3	9.4	14.2	6.8	10.3	5.4	6.7	5.9	5.5
Feb	16.5	28.5	20.2	21.8	10.9	17.7	9.1	12.7	7.3	7.7	6.5	6.2
Mar	22.2	26.7	19.2	33.2	17.6	20.9	11.7	13.1	7.3	7.2	8.3	6.2
Apr	19.1	25.4	16.5	23.9	9.9	15.4	9.0	10.5	7.4	7.1	5.2	4.6
May	16.9	22.3	14.0	18.4	10.6	15.2	7.2	9.0	5.6	5.6	5.4	4.9
Jun	14.0	17.3	13.9	18.4	9.3	14.9	7.1	8.3	5.1	4.5		
Jul	14.2	18.6	13.3	22.3	11.4	15.8	5.7	8.1	5.5	5.8		
Aug	16.1	19.9	9.9	17.0	8.4	11.3	6.2	7.8	5.9	5.6		
Sep	14.0	26.5	9.5	22.8	9.5	12.7	6.1	7.8	5.1	4.8		
Oct	16.2	23.2	10.1	15.2	10.1	11.3	6.5	7.1	5.6	5.0		
Nov	15.4	21.6	10.6	15.2	8.9	10.7	6.5	6.9	6.1	5.2		
Dec	15.3	23.0	12.4	17.2	8.3	12.2	6.7	8.0	6.4	5.1		

**SOURCE: Honolulu Board of Realtors® Research Department, compiled from MLS data.**

# Months of Inventory Remaining by Price Ranges and Areas

## Comparisons Between MAY 2001 and 2000

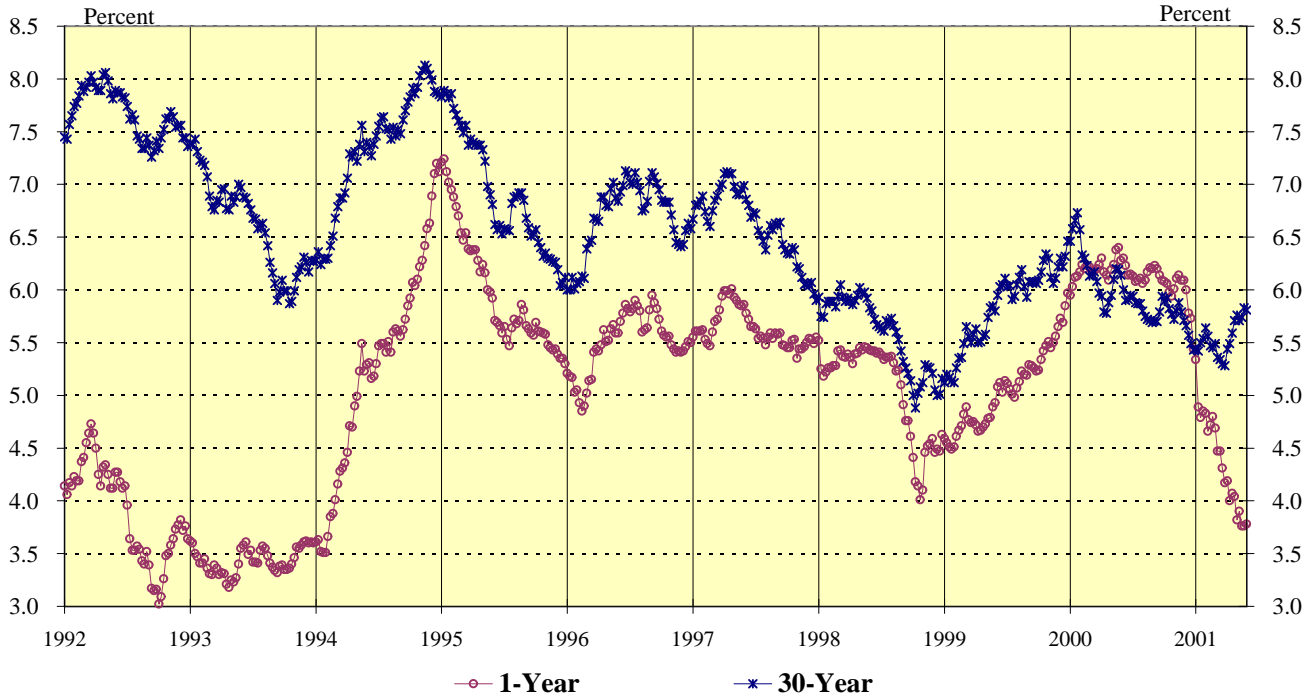
<b>SINGLE FAMILY HOMES</b>							
	<u>Current Month</u>			<u>Same Month Last Year</u>			Year-to-Year Change in Number of Months
	Number of			Number of			
	Sales	Inventory	Months	Sales	Inventory	Months	
<b>Price Ranges (000)</b>							
Less Than \$200	70	250	3.6	46	215	4.7	-1.1
\$200 - 299	82	415	5.1	80	466	5.8	-0.8
\$300 - 399	70	306	4.4	56	288	5.1	-0.8
\$400 - 499	30	154	5.1	39	148	3.8	1.3
\$500 - 699	23	142	6.2	25	121	4.8	1.3
\$700 - 999	16	130	8.1	11	96	8.7	-0.6
More Than \$1,000	8	216	27.0	12	163	13.6	13.4
<b>Areas</b>							
Metro Oahu	39	212	5.4	26	232	8.9	-3.5
East Oahu	54	343	6.4	65	290	4.5	1.9
Windward Oahu	61	314	5.1	69	283	4.1	1.0
North Shore	10	92	9.2	13	79	6.1	3.1
Leeward Oahu	135	652	4.8	96	613	6.4	-1.6
<b>All Single Family</b>	<b>299</b>	<b>1,613</b>	<b>5.4</b>	<b>269</b>	<b>1,497</b>	<b>5.6</b>	<b>-0.2</b>

<b>CONDOMINIUMS</b>							
	<u>Current Month</u>			<u>Same Month Last Year</u>			Year-to-Year Change in Number of Months
	Number of			Number of			
	Sales	Inventory	Months	Sales	Inventory	Months	
<b>Price Ranges (000)</b>							
Less Than \$100	133	423	3.2	111	510	4.6	-1.4
\$100 - 149	73	400	5.5	70	418	6.0	-0.5
\$150 - 199	69	293	4.2	56	346	6.2	-1.9
\$200 - 249	36	199	5.5	32	176	5.5	0.0
\$250 - 299	13	122	9.4	20	103	5.2	4.2
\$300 - 499	23	206	9.0	21	159	7.6	1.4
More Than \$500	14	142	10.1	12	100	8.3	1.8
<b>Areas</b>							
Metro Oahu	197	1,196	6.1	155	1,090	7.0	-1.0
East Oahu	27	179	6.6	43	140	3.3	3.4
Windward Oahu	15	75	5.0	27	112	4.1	0.9
North Shore	10	24	2.4	4	25	6.3	-3.9
Leeward Oahu	112	311	2.8	93	445	4.8	-2.0
<b>All Condominiums</b>	<b>361</b>	<b>1,785</b>	<b>4.9</b>	<b>322</b>	<b>1,812</b>	<b>5.6</b>	<b>-0.7</b>

NOTE: This table is constructed using the mid-month inventory and the prior month's sales.

SOURCE: Honolulu Board of Realtors® Research Department, compiled from MLS data.

# WEEKLY AVERAGE YIELDS OF SELECTED TREASURY SECURITIES



The Average Yields for US Treasury Securities have an important impact on interest rates in the housing market. The relationships are:

<b>LOAN RATE FOR:</b>	<b>BASED ON:</b>
Adjustable Rate Mortgages	1-Year TB*
Fixed Rate 30-Year Loans	30-Yr TB*

\*TB = US Treasury Bill or Bond

Second Half 1999			First Half 2000			Second Half 2000			First Half 2001		
Wk	1YR	30YR	Wk	1YR	30YR	Wk	1YR	30YR	Wk	1YR	30YR

Wk	1YR	30YR	Wk	1YR	30YR	Wk	1YR	30YR	Wk	1YR	30YR
27	5.11	6.03	1	5.95	6.46	27	6.13	5.94	1	5.34	5.44
28	5.06	6.04	2	6.03	6.58	28	6.08	5.88	2	4.89	5.42
29	5.01	5.91	3	6.12	6.66	29	6.09	5.87	3	4.79	5.50
30	4.98	5.94	4	6.13	6.73	30	6.11	5.87	4	4.85	5.54
31	5.07	6.05	5	6.17	6.57	31	6.06	5.80	5	4.83	5.64
32	5.13	6.12	6	6.24	6.33	32	6.09	5.75	6	4.66	5.56
33	5.23	6.19	7	6.20	6.30	33	6.17	5.72	7	4.72	5.47
34	5.20	6.03	8	6.23	6.23	34	6.21	5.71	8	4.80	5.45
35	5.19	5.93	9	6.22	6.13	35	6.20	5.69	9	4.69	5.49
36	5.29	6.08	10	6.18	6.15	36	6.23	5.71	10	4.47	5.36
37	5.28	6.07	11	6.18	6.17	37	6.20	5.70	11	4.47	5.34
38	5.26	6.08	12	6.20	6.08	38	6.14	5.79	12	4.31	5.30
39	5.23	6.06	13	6.24	5.97	39	6.09	5.94	13	4.17	5.28
40	5.24	6.09	14	6.30	5.94	40	6.08	5.89	14	4.19	5.44
41	5.34	6.17	15	6.17	5.79	41	6.06	5.92	15	4.00	5.49
42	5.42	6.28	16	6.14	5.78	42	5.98	5.82	16	4.07	5.59
43	5.47	6.34	17	6.09	5.88	43	5.94	5.77	17	4.04	5.71
44	5.51	6.30	18	6.19	5.95	44	6.01	5.72	18	3.82	5.76
45	5.45	6.12	19	6.24	6.10	45	6.11	5.80	19	3.90	5.71
46	5.50	6.06	20	6.38	6.20	46	6.14	5.88	20	3.76	5.74
47	5.56	6.11	21	6.40	6.19	47	6.09	5.79	21	3.76	5.83
48	5.65	6.22	22	6.28	6.14	48	6.09	5.71	22	3.78	5.81
49	5.73	6.30	23	6.30	6.00	49	6.00	5.66	23		
50	5.69	6.22	24	6.23	5.90	50	5.78	5.57	24		
51	5.85	6.32	25	6.14	5.91	51	5.73	5.49	25		
52	5.97	6.46	26	6.15	5.95	52	5.44	5.43	26		

1990 - 1999					
Yr:Qt	1YR	30YR	Yr:Qt	1YR	30YR
90:H1	8.20	8.54	95:Q1	6.79	7.67
90:H2	7.58	8.68	95:Q2	6.01	7.01
91:Q1	6.45	8.20	95:Q3	5.66	6.72
91:Q2	6.24	8.31	95:Q4	5.48	6.28
91:Q3	5.91	8.20	96:Q1	5.11	6.24
91:Q4	4.90	7.86	96:Q2	5.63	6.91
92:Q1	4.34	7.78	96:Q3	5.78	6.97
92:Q2	4.23	7.90	96:Q4	5.49	6.62
92:Q3	3.46	7.46	97:Q1	5.64	6.80
92:Q4	3.54	7.52	97:Q2	5.86	6.94
93:Q1	3.42	7.10	97:Q3	5.55	6.54
93:Q2	3.38	6.87	97:Q4	5.48	6.16
93:Q3	3.43	6.35	98:Q1	5.32	5.89
93:Q4	3.51	6.12	98:Q2	5.41	5.86
94:Q1	3.87	6.52	98:Q3	5.13	5.50
94:Q2	5.07	7.33	98:Q4	4.38	5.10
94:Q3	5.57	7.57	99:Q1	4.66	5.35
94:Q4	6.51	7.96	99:Q2	4.86	5.78

SOURCE: Honolulu Board of REALTORS® Research Department, compiled from U.S. FEDERAL RESERVE H15 statistical releases.

# Be in the know...

## With your personal subscription to the **MONTHLY STATISTICAL REPORT**

from the Honolulu Board of Realtors® Research Department

The *Monthly Statistical Report* is published by the Research Department of the Honolulu Board of Realtors® on the first business day of each month. Subscribers may elect to receive either an electronic copy of the report (in Adobe Acrobat) via e-mail or a printed report via first class mail. The cost of a subscription for members of the Honolulu Board of Realtors® is only \$36.00 per year for 12 electronic issues and, for non-members, \$72.00. The printed subscription rate is \$55.00 and \$110.00 per year, respectively. Print subscribers may also receive an electronic copy at no cost.

The *Monthly Statistical Report* contains a series of charts and data tables that provide a complete up-to-the-minute picture of Oahu's residential real estate market. Some of the included charts are:

*Sales Volume*

*New Listing Activity*

*Median Days on Market*

*Median Sales Prices*

*Months of Inventory*

*Price Range Data*

*Availability by Area*

*Leasehold vs Fee Data*

*Treasury Security Indexes*

To order your subscription, complete and return the form below with your check made payable to the Honolulu Board of Realtors®. If you wish to charge your subscription fee, we can accept Visa, MasterCard, Discover or American Express charge cards if you fill in the appropriate lines on the form and provide your signature. Charge requests may be sent to us via fax at 808-732-8732.

--- ✂ ---

### Honolulu Board of Realtors® Research Department

### MONTHLY STATISTICAL REPORT SUBSCRIPTION FORM

Name: \_\_\_\_\_ HBR Member: YES NO

Firm: \_\_\_\_\_ Email: \_\_\_\_\_

Mailing Address: \_\_\_\_\_

Phone: \_\_\_\_\_ Fax: \_\_\_\_\_ TOTAL ENCLOSED: \$ \_\_\_\_\_ .00

Report desired:       Electronic       Print       Electronic & Print

Method of payment:    Check    MasterCard    Visa    Discover    American Express

Charge orders only: Card Number: \_\_\_\_\_ Expires: \_\_\_\_\_

Signature: \_\_\_\_\_

Return this form to:   **Research Department, Honolulu Board of Realtors®,  
Suite 200, 1136 12th Avenue, Honolulu, Hawaii 96816**

1/2001

*For further information contact the Honolulu Board of Realtors®, 808-732-3000*

**HBR Use only: Date received \_\_\_\_\_ PDF: Y or N First issue \_\_\_\_\_**