

Executive Summary

As anticipated, the O'ahu housing market is confronting challenges amid the Coronavirus pandemic, including a steep decline in sales and listings.

Closed sales for single-family homes and condos were down more than 20%, and new listings decreased by 42% compared to this time last year. However, the median sales price for single-family homes and condos rose slightly to \$809,000 and \$450,000, respectively.

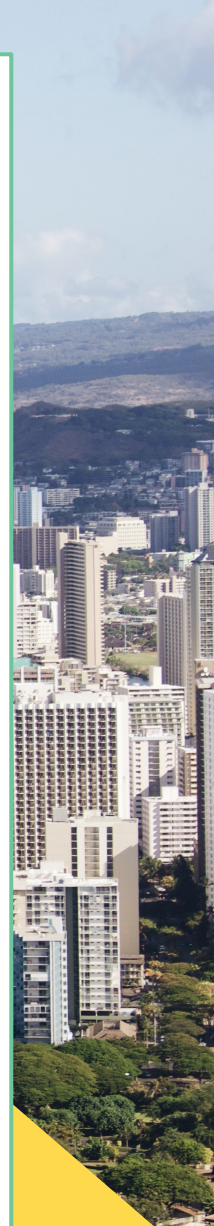
The most sales activity for single-family homes occurred in the \$500,000 to \$999,999 price range. However, closed sales in this range were down 28% compared to the same time last year. Sales \$1 million or more fared almost even, with a 3% decline compared to 2019.

Condominium sales across all price ranges experienced a significant drop in sales activity. The most significant drop in sales occurred in the \$200,000 to \$299,999 range at 56%. Mid-range sales between \$300,000 to \$599,999 were down by 24%, while sales in the \$1 million and up category declined by 40%.

There continues to be a slowdown in the number of new listings coming onto the market due to the stay-at-home order that went into effect on March 23. New single-family home and condo listings in the \$1 million and up range saw the largest declines at 51.4% and 58.1% respectively when compared to this time last year. Meanwhile, as mortgage rates continue to reach all-time lows, lenders are tightening credit standards thereby limiting the pool of buyers that can leverage this opportunity in their favor.

Only 26% of the current supply of active single-family homes were listed after the stay-at-home order. Compared to the same time last year, listings put on the market made up 41% of the active single-family home inventory. Within the current supply of active condo listings, 24% of properties were listed after the stay-at-home order, compared to 37% during the same time period in 2019.

Sellers and buyers are exceedingly cautious as they juggle their perceptions and the reality of economic security amid these uncertain times. However, once consumers begin to feel some relief from the impacts of the pandemic, it's likely we will see listing and buying activities slowly increase.



Oahu Monthly Housing Statistics

April 2020



SINGLE FAMILY HOMES

Median Sales Price	
\$809,000	+5.5%
Closed Sales	
248	-22.0%
Average Sales Price	
\$941,708	+7.5%

CONDOS

Median Sales Price	
\$450,000	+7.4%
Closed Sales	
343	-27.9%
Average Sales Price	
\$521,484	+2.6%

INDEX:

Monthly Indicators	2
Closed Sales	3
Median Sales Price	4
Median Days on Market	5
New Listings	6
Pending Sales	7
Months of Inventory	8
Active Listings	9
Average Sales Price	10
% of Original Listing Price Received	11
Active Continue to Show	12
 Housing Supply Overview	 13
Pending Sales (by price range)	14-15
Median Days on Market (by price range)	16-17
% of list price received (by price range)	18-19
Inventory of Homes (by price range)	20-21
Months Supply of Inventory (price range)	22-23
 Historical Graphs	 24-25
 Price Graphs	 26-27

SOURCE: Honolulu Board of REALTORS®, residential re-sales data compiled from HiCentral MLS, Ltd.®

©Copyright 2020. Honolulu Board of REALTORS®. All Rights Reserved. Information herein deemed reliable but not guaranteed.

Monthly Indicators

April 2020

	Single Family Homes					
	Apr-20	Apr-19	%	YTD-20	YTD-19	%
Closed Sales	248	318	-22.0%	1,063	1,048	1.4%
Median Sales Price	\$809,000	\$766,750	5.5%	\$788,500	\$775,000	1.7%
Median Days on Market	19	25	-24.0%	24	24	0.0%
New Listings	290	532	-45.5%	1,507	1,902	-20.8%
Pending Sales	422	455	-7.3%	1,705	1,566	8.9%
Months of Inventory	2.5	3.5	-28.6%	--	--	--
Active Listings	1,173	1,555	-24.6%	--	--	--
Average Sales Price	\$941,708	\$876,258	7.5%	\$947,049	\$929,752	1.9%
% of Original Listing Price Received	98.9%	98.3%	0.6%	98.4%	97.0%	1.4%

	Condos					
	Apr-20	Apr-19	%	YTD-20	YTD-19	%
Closed Sales	343	476	-27.9%	1,448	1,590	-8.9%
Median Sales Price	\$450,000	\$418,950	7.4%	\$434,000	\$415,000	4.6%
Median Days on Market	27	29	-6.9%	30	26	15.4%
New Listings	440	727	-39.5%	2,385	2,969	-19.7%
Pending Sales	465	640	-27.3%	2,109	2,251	-6.3%
Months of Inventory	3.6	3.8	-5.3%	--	--	--
Active Listings	2,193	2,404	-8.8%	--	--	--
Average Sales Price	\$521,484	\$508,023	2.6%	\$520,770	\$505,423	3.0%
% of Original Listing Price Received	98.1%	97.4%	0.7%	97.7%	97.0%	0.7%

SOURCE: Honolulu Board of REALTORS®, compiled from MLS data.

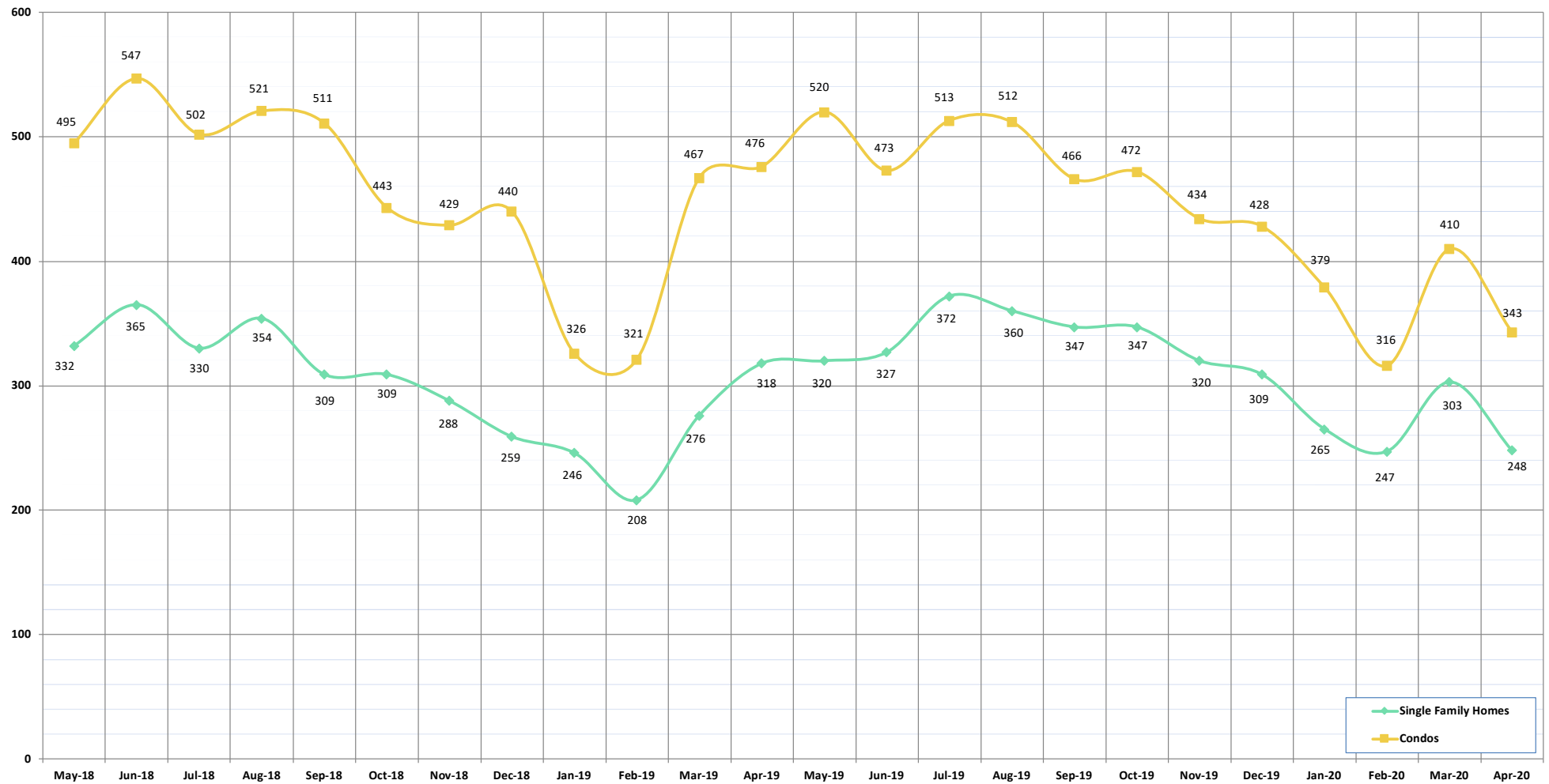
©Copyright 2020. Honolulu Board of REALTORS®. All Rights Reserved. Information herein deemed reliable but not guaranteed.

Closed Sales

April 2020

OAHU, HAWAII

(A count of all properties that have closed in a given month)



CLOSED SALES:	May-18	Jun-18	Jul-18	Aug-18	Sep-18	Oct-18	Nov-18	Dec-18	Jan-19	Feb-19	Mar-19	Apr-19	May-19	Jun-19	Jul-19	Aug-19	Sep-19	Oct-19	Nov-19	Dec-19	Jan-20	Feb-20	Mar-20	Apr-20
Single Family Homes	332	365	330	354	309	309	288	259	246	208	276	318	320	327	372	360	347	347	320	309	265	247	303	248
Condos	495	547	502	521	511	443	429	440	326	321	467	476	520	473	513	512	466	472	434	428	379	316	410	343
TOTAL	827	912	832	875	820	752	717	699	572	529	743	794	840	800	885	872	813	819	754	737	644	563	713	591

SOURCE: Honolulu Board of REALTORS®, compiled from MLS data.

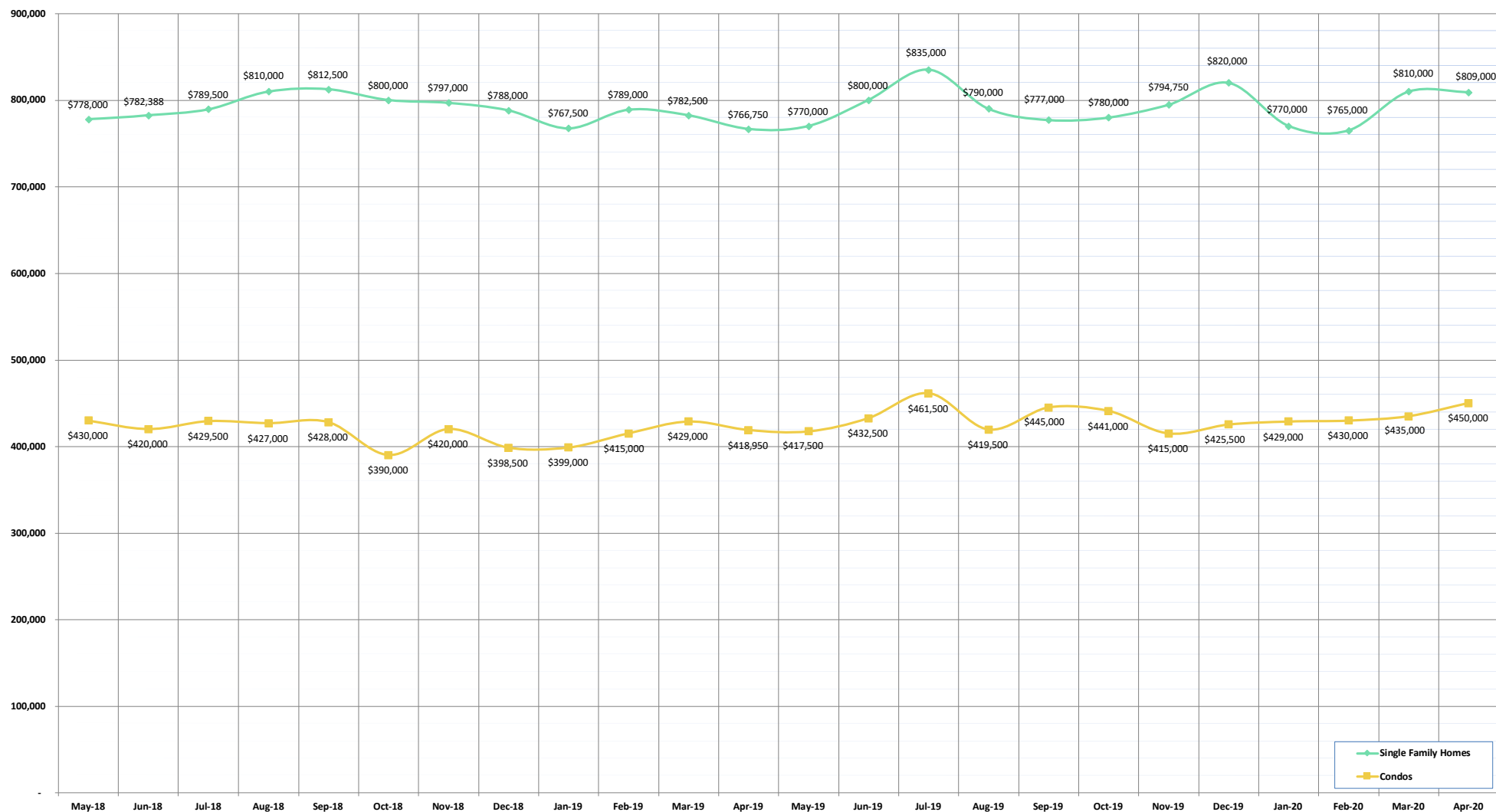
©Copyright 2020. Honolulu Board of REALTORS®, All Rights Reserved. Information herein deemed reliable but not guaranteed.

Median Sales Price

April 2020

OAHU, HAWAII

(The median sales price for all closed properties in a given month)



MEDIAN SALES PRICE:	May-18	Jun-18	Jul-18	Aug-18	Sep-18	Oct-18	Nov-18	Dec-18	Jan-19	Feb-19	Mar-19	Apr-19	May-19	Jun-19	Jul-19	Aug-19	Sep-19	Oct-19	Nov-19	Dec-19	Jan-20	Feb-20	Mar-20	Apr-20
Single Family Homes	778,000	782,388	789,500	810,000	812,500	800,000	797,000	788,000	767,500	789,000	782,500	766,750	770,000	800,000	835,000	790,000	777,000	780,000	794,750	820,000	770,000	765,000	810,000	809,000
Condos	430,000	420,000	429,500	427,000	428,000	390,000	420,000	398,500	399,000	415,000	429,000	418,950	417,500	432,500	461,500	419,500	445,000	441,000	415,000	425,500	429,000	430,000	435,000	450,000

SOURCE: Honolulu Board of REALTORS®, compiled from MLS data.

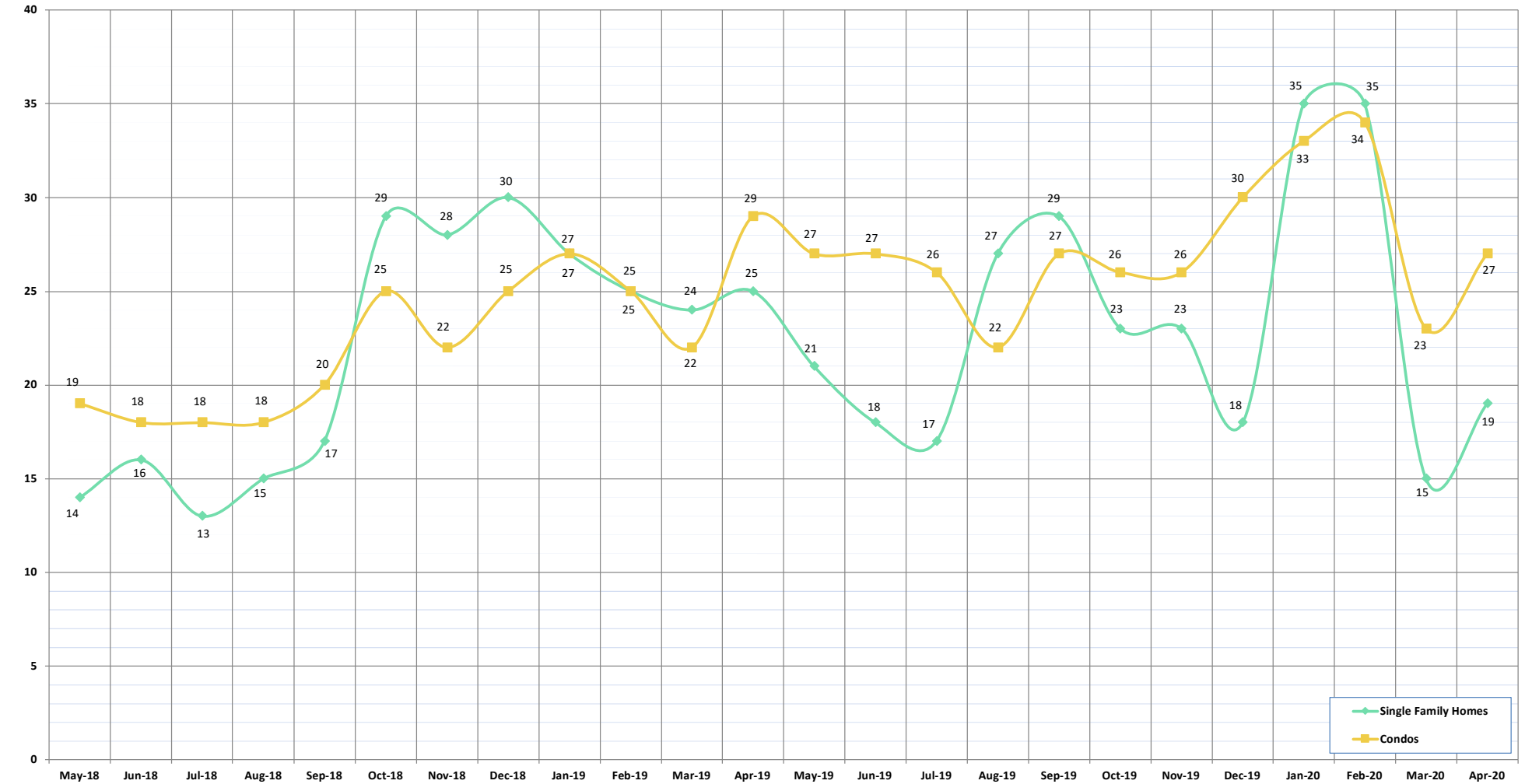
©Copyright 2020. Honolulu Board of REALTORS®. All Rights Reserved. Information herein deemed reliable but not guaranteed.

Median Days on Market

April 2020

OAHU, HAWAII

(The median number of days between when a property is first listed and when an offer is accepted)



MEDIAN DAYS ON MARKET:	May-18	Jun-18	Jul-18	Aug-18	Sep-18	Oct-18	Nov-18	Dec-18	Jan-19	Feb-19	Mar-19	Apr-19	May-19	Jun-19	Jul-19	Aug-19	Sep-19	Oct-19	Nov-19	Dec-19	Jan-20	Feb-20	Mar-20	Apr-20
Single Family Homes	14	16	13	15	17	29	28	30	27	25	24	25	21	18	17	27	29	23	23	18	35	35	15	19
Condos	19	18	18	18	20	25	22	25	27	25	22	29	27	27	26	22	27	26	26	30	33	34	23	27

SOURCE: Honolulu Board of REALTORS®, compiled from MLS data.

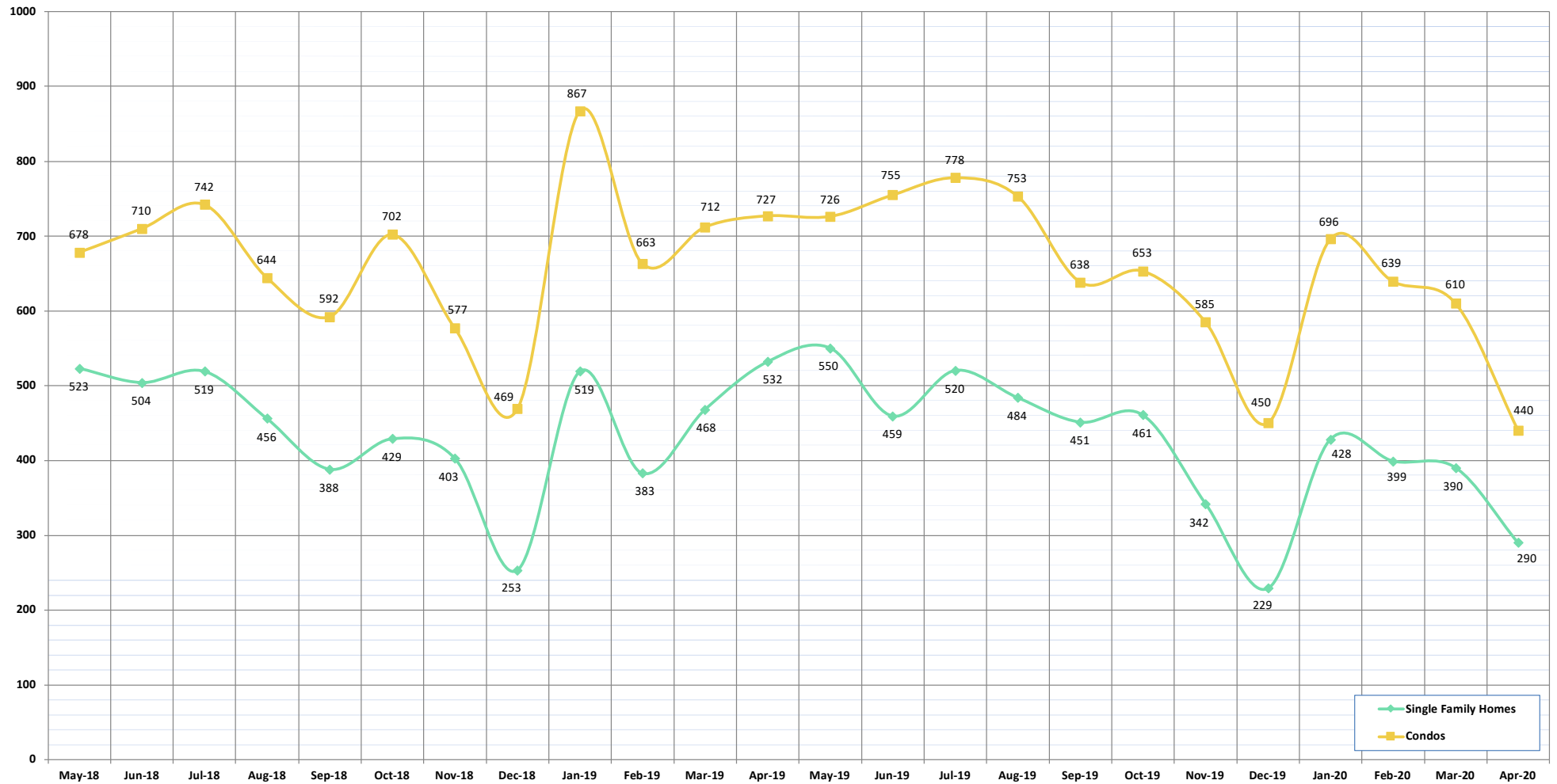
©Copyright 2020. Honolulu Board of REALTORS®, All Rights Reserved. Information herein deemed reliable but not guaranteed.

New Listings

April 2020

OAHU, HAWAII

(A count of the properties that have been newly listed on the market in a given month)



NEW LISTINGS:	May-18	Jun-18	Jul-18	Aug-18	Sep-18	Oct-18	Nov-18	Dec-18	Jan-19	Feb-19	Mar-19	Apr-19	May-19	Jun-19	Jul-19	Aug-19	Sep-19	Oct-19	Nov-19	Dec-19	Jan-20	Feb-20	Mar-20	Apr-20
Single Family Homes	523	504	519	456	388	429	403	253	519	383	468	532	550	459	520	484	451	461	342	229	428	399	390	290
Condos	678	710	742	644	592	702	577	469	867	663	712	727	726	755	778	753	638	653	585	450	696	639	610	440
TOTAL	1201	1214	1261	1100	980	1131	980	722	1386	1046	1180	1259	1276	1214	1298	1237	1089	1114	927	679	1124	1038	1000	730

SOURCE: Honolulu Board of REALTORS®, compiled from MLS data.

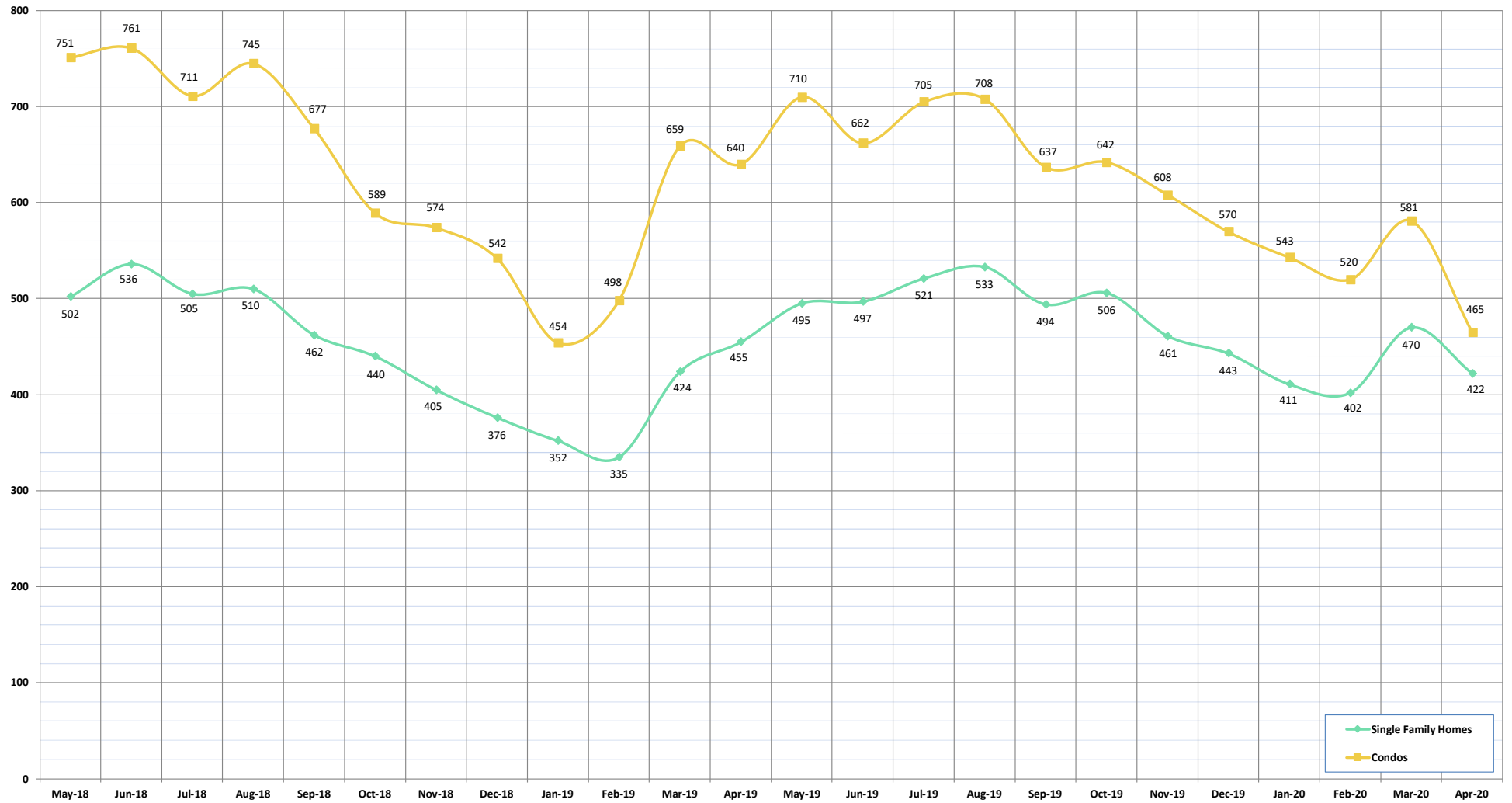
©Copyright 2020. Honolulu Board of REALTORS®, All Rights Reserved. Information herein deemed reliable but not guaranteed.

Pending Sales

April 2020

OAHU, HAWAII

(A count of the properties that have offers accepted on them in a given month)



PENDING SALES:	May-18	Jun-18	Jul-18	Aug-18	Sep-18	Oct-18	Nov-18	Dec-18	Jan-19	Feb-19	Mar-19	Apr-19	May-19	Jun-19	Jul-19	Aug-19	Sep-19	Oct-19	Nov-19	Dec-19	Jan-20	Feb-20	Mar-20	Apr-20
Single Family Homes	502	536	505	510	462	440	405	376	352	335	424	455	495	497	521	533	494	506	461	443	411	402	470	422
Condos	751	761	711	745	677	589	574	542	454	498	659	640	710	662	705	708	637	642	608	570	543	520	581	465
TOTAL	1253	1297	1216	1255	1139	1029	979	918	806	833	1083	1095	1205	1159	1226	1241	1131	1148	1069	1013	954	922	1051	887

SOURCE: Honolulu Board of REALTORS®, compiled from MLS data.

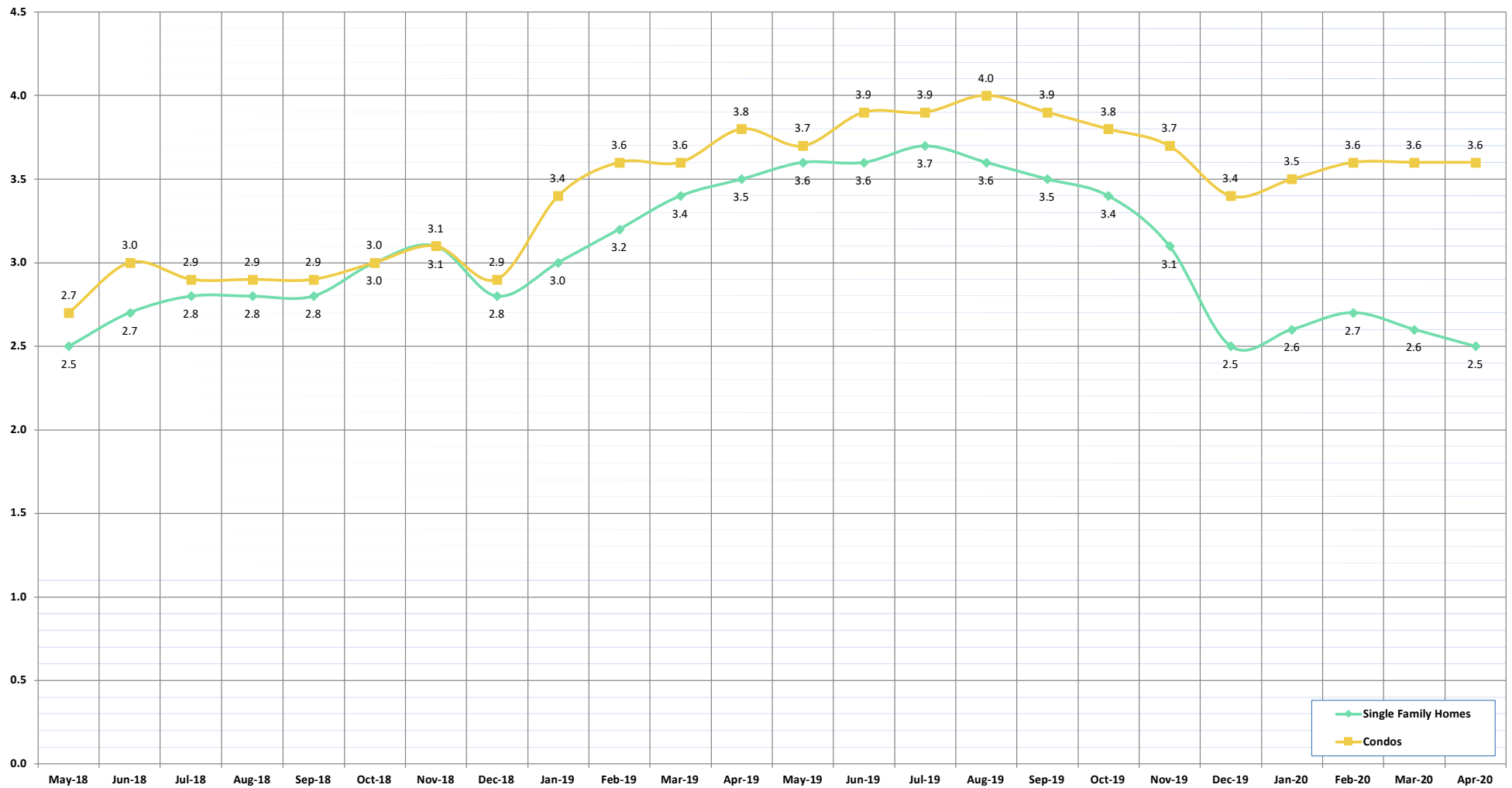
©Copyright 2020. Honolulu Board of REALTORS®. All Rights Reserved. Information herein deemed reliable but not guaranteed.

Months of Inventory

April 2020

OAHU, HAWAII

(Compares the number of active listings available to the average monthly pending sales)



MONTHS OF INVENTORY:	May-18	Jun-18	Jul-18	Aug-18	Sep-18	Oct-18	Nov-18	Dec-18	Jan-19	Feb-19	Mar-19	Apr-19	May-19	Jun-19	Jul-19	Aug-19	Sep-19	Oct-19	Nov-19	Dec-19	Jan-20	Feb-20	Mar-20	Apr-20
Single Family Homes	2.5	2.7	2.8	2.8	2.8	3.0	3.1	2.8	3.0	3.2	3.4	3.5	3.6	3.6	3.7	3.6	3.5	3.4	3.1	2.5	2.6	2.7	2.6	2.5
Condos	2.7	3.0	2.9	2.9	2.9	3.0	3.1	2.9	3.4	3.6	3.6	3.8	3.7	3.9	3.9	4.0	3.9	3.8	3.7	3.4	3.5	3.6	3.6	3.6

SOURCE: Honolulu Board of REALTORS®, compiled from MLS data.

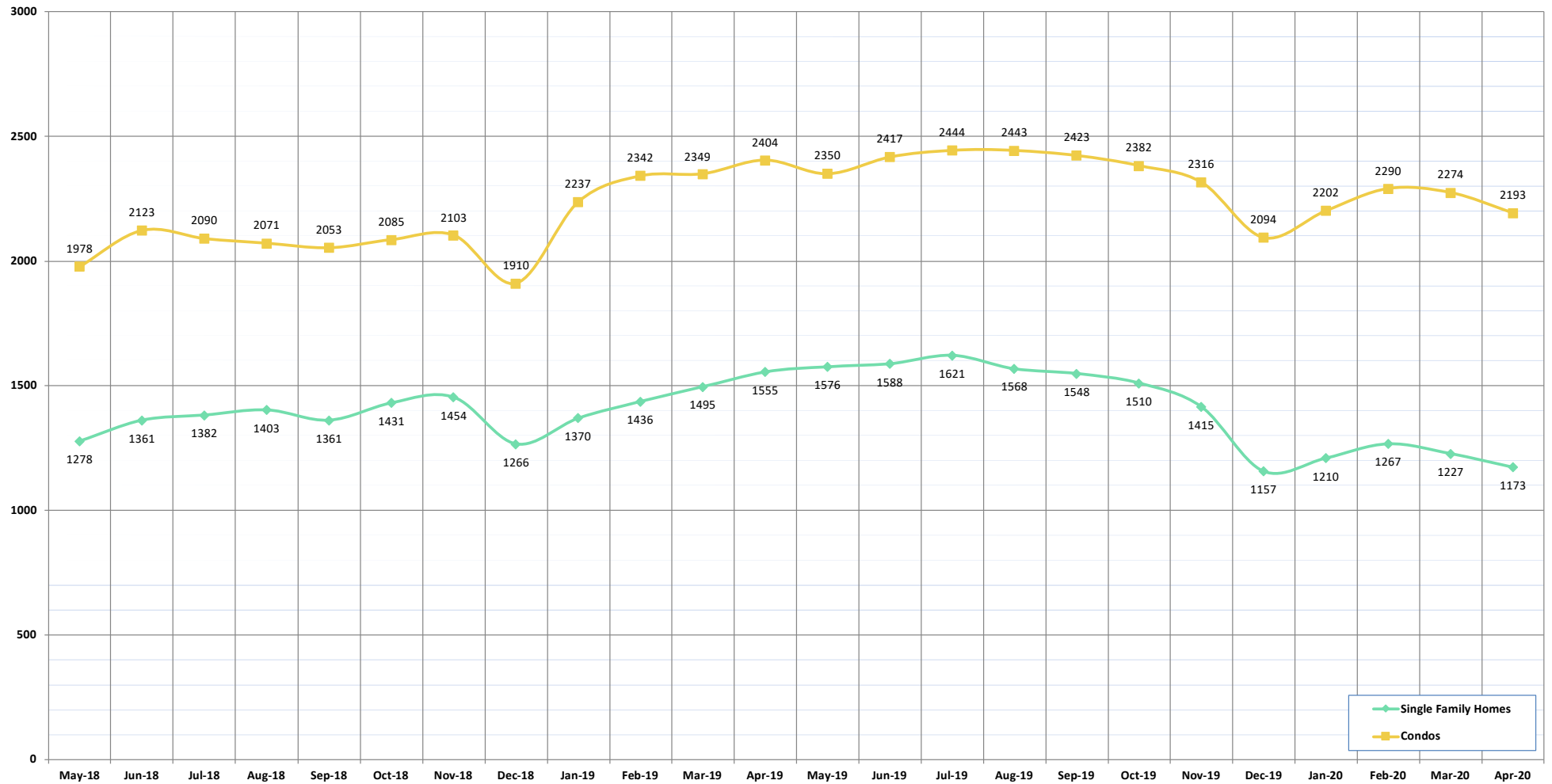
©Copyright 2020. Honolulu Board of REALTORS®, All Rights Reserved. Information herein deemed reliable but not guaranteed.

Active Listings

April 2020

OAHU, HAWAII

(The number of properties available for purchase during a given month)



ACTIVE LISTINGS:	May-18	Jun-18	Jul-18	Aug-18	Sep-18	Oct-18	Nov-18	Dec-18	Jan-19	Feb-19	Mar-19	Apr-19	May-19	Jun-19	Jul-19	Aug-19	Sep-19	Oct-19	Nov-19	Dec-19	Jan-20	Feb-20	Mar-20	Apr-20
Single Family Homes	1278	1361	1382	1403	1361	1431	1454	1266	1370	1436	1495	1555	1576	1588	1621	1568	1548	1510	1415	1157	1210	1267	1227	1173
Condos	1978	2123	2090	2071	2053	2085	2103	1910	2237	2342	2349	2404	2350	2417	2444	2443	2423	2382	2316	2094	2202	2290	2274	2193
TOTAL	3256	3484	3472	3474	3414	3516	3557	3176	3607	3778	3844	3959	3926	4005	4065	4011	3971	3892	3731	3251	3412	3557	3501	3366

SOURCE: Honolulu Board of REALTORS®, compiled from MLS data.

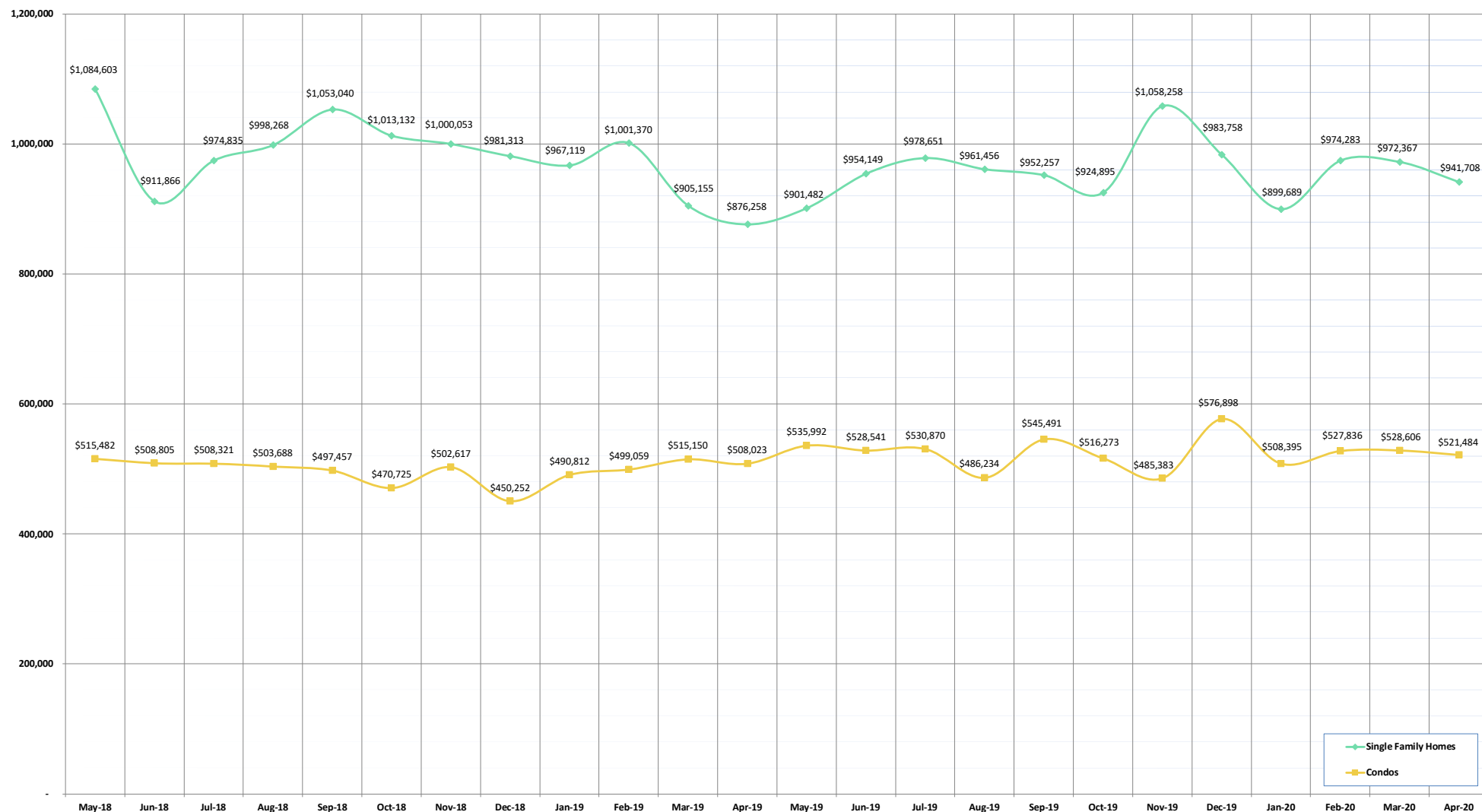
©Copyright 2020. Honolulu Board of REALTORS®, All Rights Reserved. Information herein deemed reliable but not guaranteed.

Average Sales Price

April 2020

OAHU, HAWAII

(The average sales price for all closed sales in a given month)



AVERAGE SALES PRICE:	May-18	Jun-18	Jul-18	Aug-18	Sep-18	Oct-18	Nov-18	Dec-18	Jan-19	Feb-19	Mar-19	Apr-19	May-19	Jun-19	Jul-19	Aug-19	Sep-19	Oct-19	Nov-19	Dec-19	Jan-20	Feb-20	Mar-20	Apr-20
Single Family Homes	1,084,603	911,866	974,835	998,268	1,053,040	1,013,132	1,000,053	981,313	967,119	1,001,370	905,155	876,258	901,482	954,149	978,651	961,456	952,257	924,895	1,058,258	983,758	899,689	974,283	972,367	941,708
Condos	515,482	508,805	508,321	503,688	497,457	470,725	502,617	450,252	490,812	499,059	515,150	508,023	535,992	528,541	530,870	486,234	545,491	516,273	485,383	576,898	508,395	527,836	528,606	521,484

SOURCE: Honolulu Board of REALTORS®, compiled from MLS data.

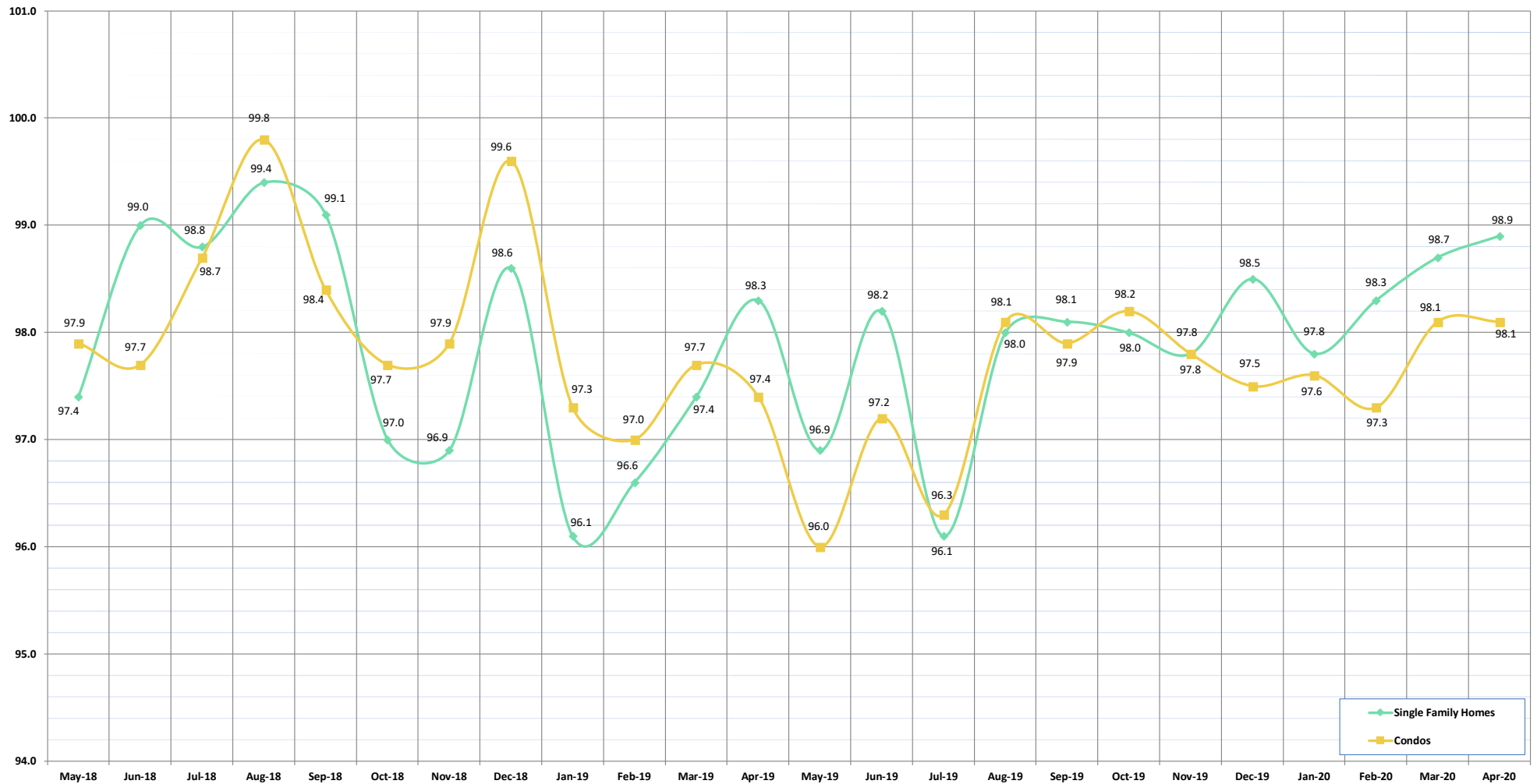
©Copyright 2020. Honolulu Board of REALTORS®. All Rights Reserved. Information herein deemed reliable but not guaranteed.

Percent of Original List Price Received

April 2020

OAHU, HAWAII

(The percentage found when dividing a property's sales price by the original list price)



% OF ORIGINAL LIST PRICE RECEIVED:	May-18	Jun-18	Jul-18	Aug-18	Sep-18	Oct-18	Nov-18	Dec-18	Jan-19	Feb-19	Mar-19	Apr-19	May-19	Jun-19	Jul-19	Aug-19	Sep-19	Oct-19	Nov-19	Dec-19	Jan-20	Feb-20	Mar-20	Apr-20
Single Family Homes	97.4	99.0	98.8	99.4	99.1	97.0	96.9	98.6	96.1	96.6	97.4	98.3	96.9	98.2	96.1	98.0	98.1	98.0	97.8	98.5	97.8	98.3	98.7	98.9
Condos	97.9	97.7	98.7	99.8	98.4	97.7	97.9	99.6	97.3	97.0	97.7	97.4	96.0	97.2	96.3	98.1	97.9	98.2	97.8	97.5	97.6	97.3	98.1	98.1

SOURCE: Honolulu Board of REALTORS®, compiled from MLS data.

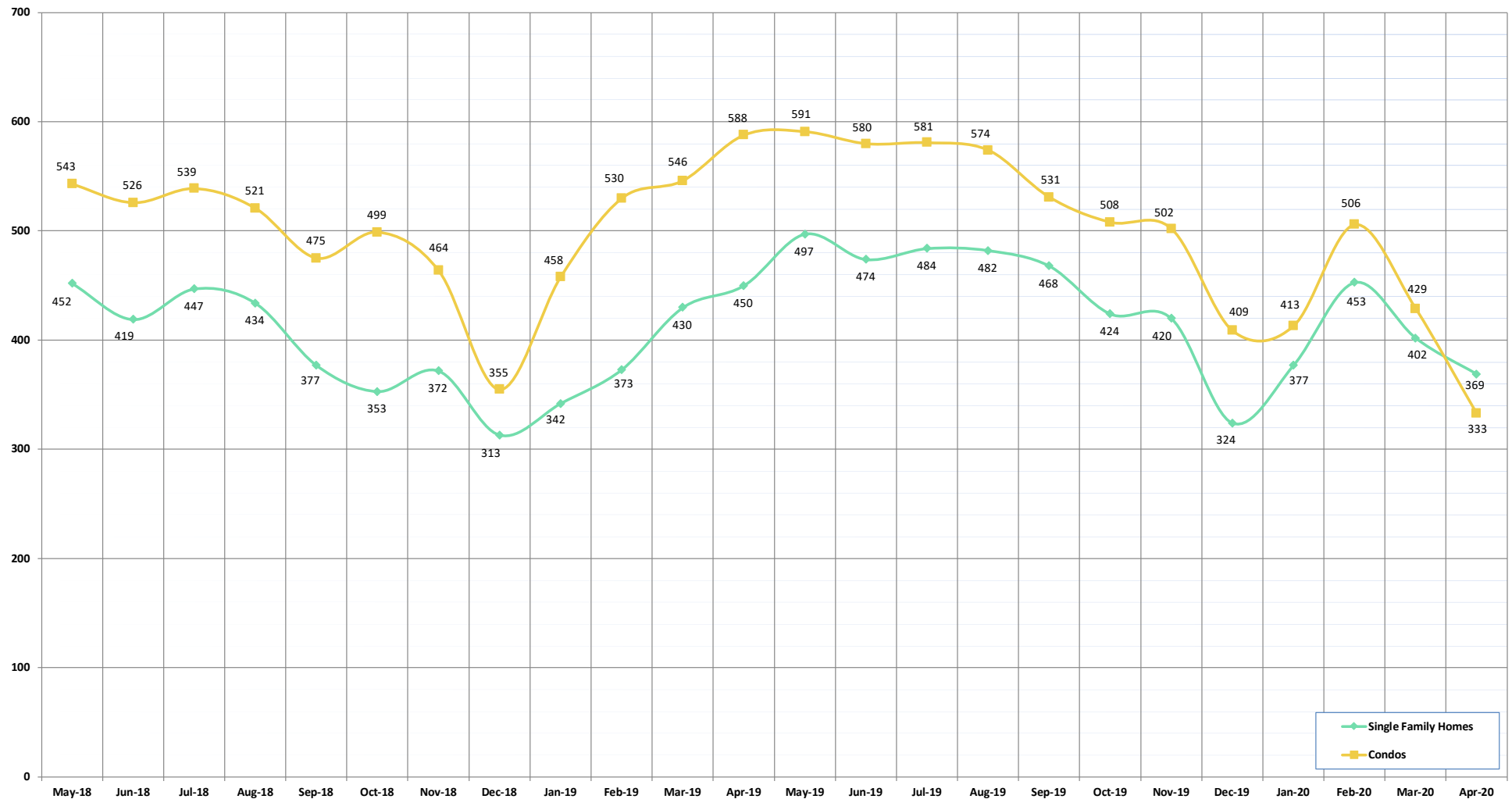
©Copyright 2020. Honolulu Board of REALTORS®. All Rights Reserved. Information herein deemed reliable but not guaranteed.

Active Continue to Show

April 2020

OAHU, HAWAII

(A count of the properties that are in "ES" status during the current month)



ACTIVE CONTINUE TO SHOW:	May-18	Jun-18	Jul-18	Aug-18	Sep-18	Oct-18	Nov-18	Dec-18	Jan-19	Feb-19	Mar-19	Apr-19	May-19	Jun-19	Jul-19	Aug-19	Sep-19	Oct-19	Nov-19	Dec-19	Jan-20	Feb-20	Mar-20	Apr-20
Single Family Homes	452	419	447	434	377	353	372	313	342	373	430	450	497	474	484	482	468	424	420	324	377	453	402	369
Condos	543	526	539	521	475	499	464	355	458	530	546	588	591	580	581	574	531	508	502	409	413	506	429	333
TOTAL	995	945	986	955	852	852	836	668	800	903	976	1038	1088	1054	1065	1056	999	932	922	733	790	959	831	702

SOURCE: Honolulu Board of REALTORS®, compiled from MLS data.

©Copyright 2020. Honolulu Board of REALTORS®. All Rights Reserved. Information herein deemed reliable but not guaranteed.

Housing Supply Overview

April 2020

OAHU, HAWAII

Single Family Homes	Pending Sales				Days on Market				Percentage of Original Price Received				Inventory of Homes for Sale				Months Supply of Inventory		
	Apr-20	Apr-19	%		Apr-20	Apr-19	%		Apr-20	Apr-19	%		Apr-20	Apr-19	%		Apr-20	Apr-19	%
\$350,000 and Below	51	63	-19.0%		48	41	16.2%		94.0%	95.4%	-1.5%		16	20	-20.0%		3.3	3.7	-11.3%
\$350,001 - \$475,000	118	130	-9.2%		25	23	10.2%		97.7%	97.9%	-0.2%		45	31	45.2%		4.6	2.2	110.4%
\$475,001 - \$550,000	184	215	-14.4%		25	29	-13.4%		97.9%	97.1%	0.8%		47	56	-16.1%		2.8	2.9	-4.8%
\$550,001 - \$650,000	542	486	11.5%		23	26	-10.9%		98.7%	98.3%	0.4%		128	147	-12.9%		2.9	3.3	-10.9%
\$650,001 - \$800,000	1173	1076	9.0%		20	22	-12.1%		98.6%	97.7%	1.0%		200	334	-40.1%		2.1	3.7	-42.6%
\$800,001 - \$1.1M	1094	1010	8.3%		24	20	21.0%		97.6%	97.9%	-0.2%		242	409	-40.8%		2.8	4.8	-43.0%
\$1.1M - \$1.9M	611	592	3.2%		29	28	6.0%		96.3%	95.3%	1.1%		265	311	-14.8%		5.4	6.2	-12.6%
\$1.9M and Above	184	182	1.1%		63	30	113.5%		93.3%	92.1%	1.4%		230	247	-6.9%		15.4	15.4	0.2%
All Single Family Homes	3957	3754	5.4%		23	22	6.9%		98.0%	97.9%	0.1%		1173	1555	-24.6%		3.6	4.8	-23.7%

Condos	Pending Sales				Days on Market				Percentage of Original Price Received				Inventory of Homes for Sale				Months Supply of Inventory		
	Apr-20	Apr-19	%		Apr-20	Apr-19	%		Apr-20	Apr-19	%		Apr-20	Apr-19	%		Apr-20	Apr-19	%
\$150,000 and below	231	257	-10.1%		42	39	6.6%		92.8%	90.3%	2.7%		102	98	4.1%		5.2	4.2	23.8%
\$150,001 - \$200,000	212	271	-21.8%		41	28	47.3%		95.0%	96.4%	-1.4%		118	99	19.2%		5.7	4.3	31.4%
\$200,001 - \$250,000	315	378	-16.7%		34	24	39.2%		96.1%	96.9%	-0.8%		167	138	21.0%		5.5	4.2	33.2%
\$250,001 - \$300,000	356	442	-19.5%		33	24	41.7%		97.7%	97.2%	0.5%		170	161	5.6%		5.1	4.4	17.5%
\$300,001 - \$375,000	898	943	-4.8%		26	18	46.9%		97.7%	98.4%	-0.7%		276	253	9.1%		3.5	3.1	14.6%
\$375,001 - \$475,000	1113	1160	-4.1%		24	20	17.5%		98.1%	98.2%	-0.1%		360	400	-10.0%		3.8	4.0	-3.9%
\$475,001 - \$700,000	1523	1477	3.1%		22	24	-8.7%		98.4%	97.9%	0.5%		496	595	-16.6%		3.9	4.5	-13.8%
\$700,001 and above	783	783	0.0%		45	32	41.3%		96.2%	97.0%	-0.8%		504	660	-23.6%		7.6	9.9	-23.5%
All Condos	5431	5711	-4.9%		27	22	22.4%		97.5%	98.0%	-0.5%		2193	2404	-8.8%		4.7	4.8	-3.5%

SOURCE: Honolulu Board of REALTORS®, compiled from MLS data.

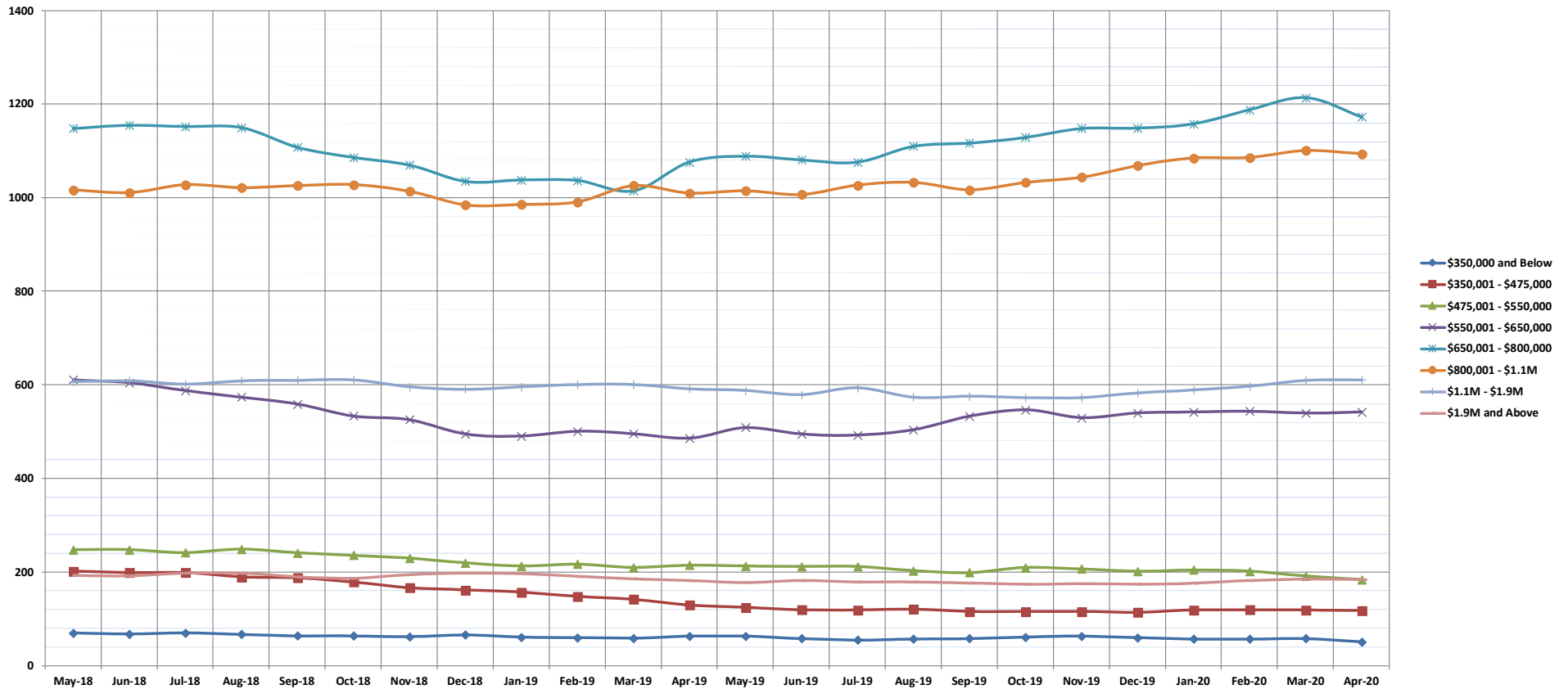
©Copyright 2020. Honolulu Board of REALTORS®. All Rights Reserved. Information herein deemed reliable but not guaranteed.

Pending Sales

April 2020

Single Family Homes: Monthly, by Price Range

(A count of properties that have offers accepted on them in a given month. Based on a 12 month rolling total.)



	May-18	Jun-18	Jul-18	Aug-18	Sep-18	Oct-18	Nov-18	Dec-18	Jan-19	Feb-19	Mar-19	Apr-19	May-19	Jun-19	Jul-19	Aug-19	Sep-19	Oct-19	Nov-19	Dec-19	Jan-20	Feb-20	Mar-20	Apr-20
\$350,000 and Below	70	68	70	67	64	64	62	66	61	60	59	63	63	58	55	57	58	61	63	60	57	57	58	51
\$350,001 - \$475,000	202	199	199	190	188	179	167	162	157	148	142	130	125	120	119	121	116	116	116	114	119	120	119	118
\$475,001 - \$550,000	248	248	242	249	241	236	230	220	213	217	210	215	213	212	212	203	199	210	207	202	205	202	192	184
\$550,001 - \$650,000	611	605	588	574	559	534	526	495	491	501	496	486	509	495	493	504	533	547	530	540	542	544	540	542
\$650,001 - \$800,000	1148	1155	1152	1150	1108	1086	1070	1035	1038	1037	1015	1076	1089	1081	1076	1110	1117	1129	1148	1149	1158	1188	1214	1173
\$800,001 - \$1.1M	1017	1011	1028	1022	1026	1028	1014	985	986	991	1026	1010	1015	1007	1027	1033	1017	1033	1044	1069	1085	1086	1101	1094
\$1.1M - \$1.9M	607	609	602	609	610	611	596	591	596	601	601	592	588	579	594	574	576	573	573	583	589	597	610	611
\$1.9M and Above	193	192	198	198	190	187	195	198	197	191	186	182	178	182	179	179	177	174	175	174	176	182	185	184
All Single Family Homes	4096	4087	4079	4059	3986	3925	3860	3752	3739	3746	3735	3754	3780	3734	3755	3781	3793	3843	3856	3891	3931	3976	4019	3957

SOURCE: Honolulu Board of REALTORS®, compiled from MLS data.

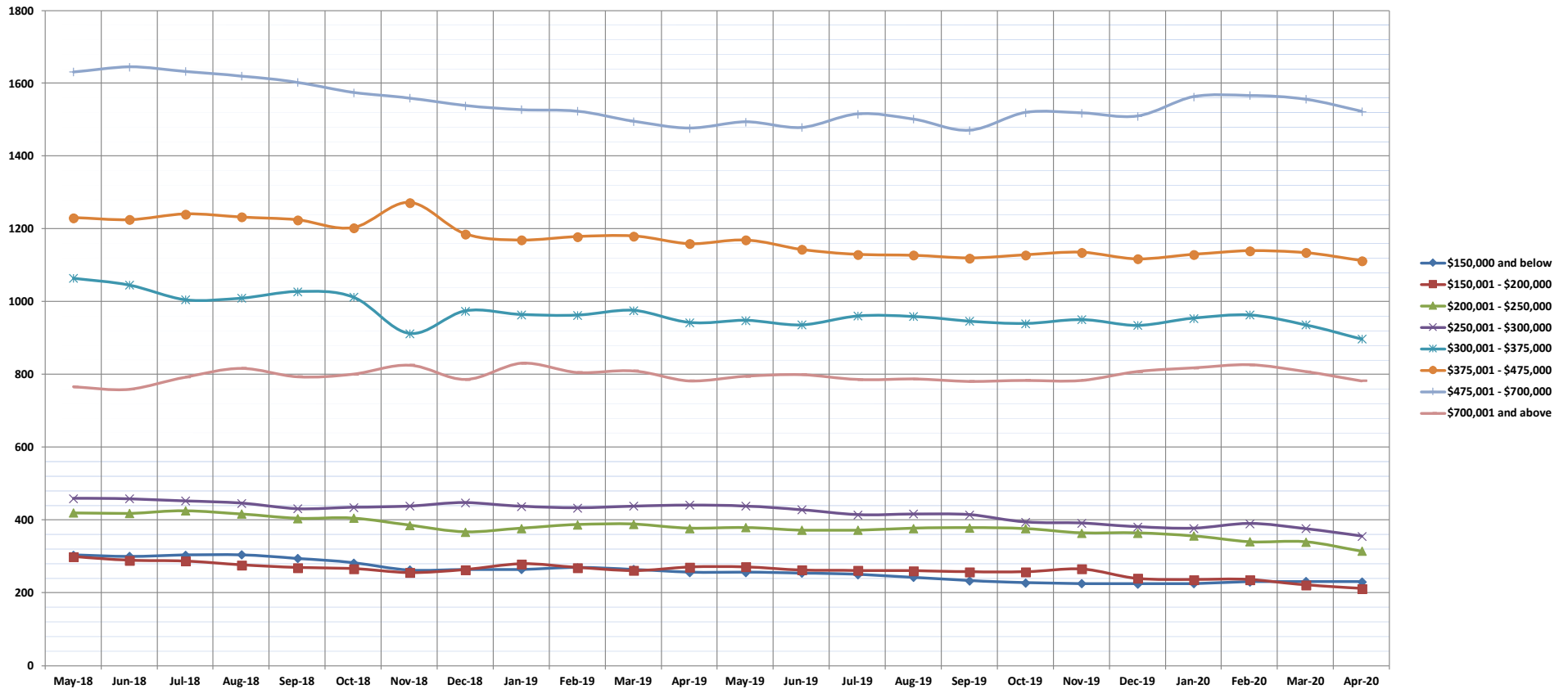
©Copyright 2020. Honolulu Board of REALTORS®, All Rights Reserved. Information herein deemed reliable but not guaranteed.

Pending Sales

April 2020

Condos: Monthly, by Price Range

(A count of properties that have offers accepted on them in a given month. Based on a 12 month rolling total.)



	May-18	Jun-18	Jul-18	Aug-18	Sep-18	Oct-18	Nov-18	Dec-18	Jan-19	Feb-19	Mar-19	Apr-19	May-19	Jun-19	Jul-19	Aug-19	Sep-19	Oct-19	Nov-19	Dec-19	Jan-20	Feb-20	Mar-20	Apr-20
\$150,000 and below	304	301	304	305	295	283	263	264	265	270	265	257	257	255	251	243	234	228	226	225	226	231	232	231
\$150,001 - \$200,000	300	290	288	277	270	267	256	264	280	270	262	271	272	263	262	261	258	258	266	240	237	237	222	212
\$200,001 - \$250,000	420	419	426	417	405	406	386	368	378	388	389	378	380	373	373	378	379	377	365	365	357	341	340	315
\$250,001 - \$300,000	460	459	453	447	432	435	439	448	438	434	439	442	439	429	415	417	415	395	392	382	378	391	377	356
\$300,001 - \$375,000	1065	1046	1006	1010	1028	1013	913	975	965	963	976	943	949	937	961	960	947	940	951	935	955	964	937	898
\$375,001 - \$475,000	1231	1226	1241	1233	1225	1204	1273	1186	1170	1179	1181	1160	1170	1144	1130	1128	1120	1129	1136	1118	1130	1140	1135	1113
\$475,001 - \$700,000	1632	1645	1633	1620	1603	1575	1560	1539	1528	1524	1496	1477	1494	1479	1516	1502	1471	1520	1519	1510	1563	1567	1557	1523
\$700,001 and above	766	760	793	817	794	801	826	786	831	806	810	783	795	800	786	788	781	784	784	808	818	827	808	783
All Condos	6178	6146	6144	6126	6052	5984	5916	5830	5855	5834	5818	5711	5756	5680	5694	5677	5605	5631	5639	5583	5664	5698	5608	5431

SOURCE: Honolulu Board of REALTORS®, compiled from MLS data.

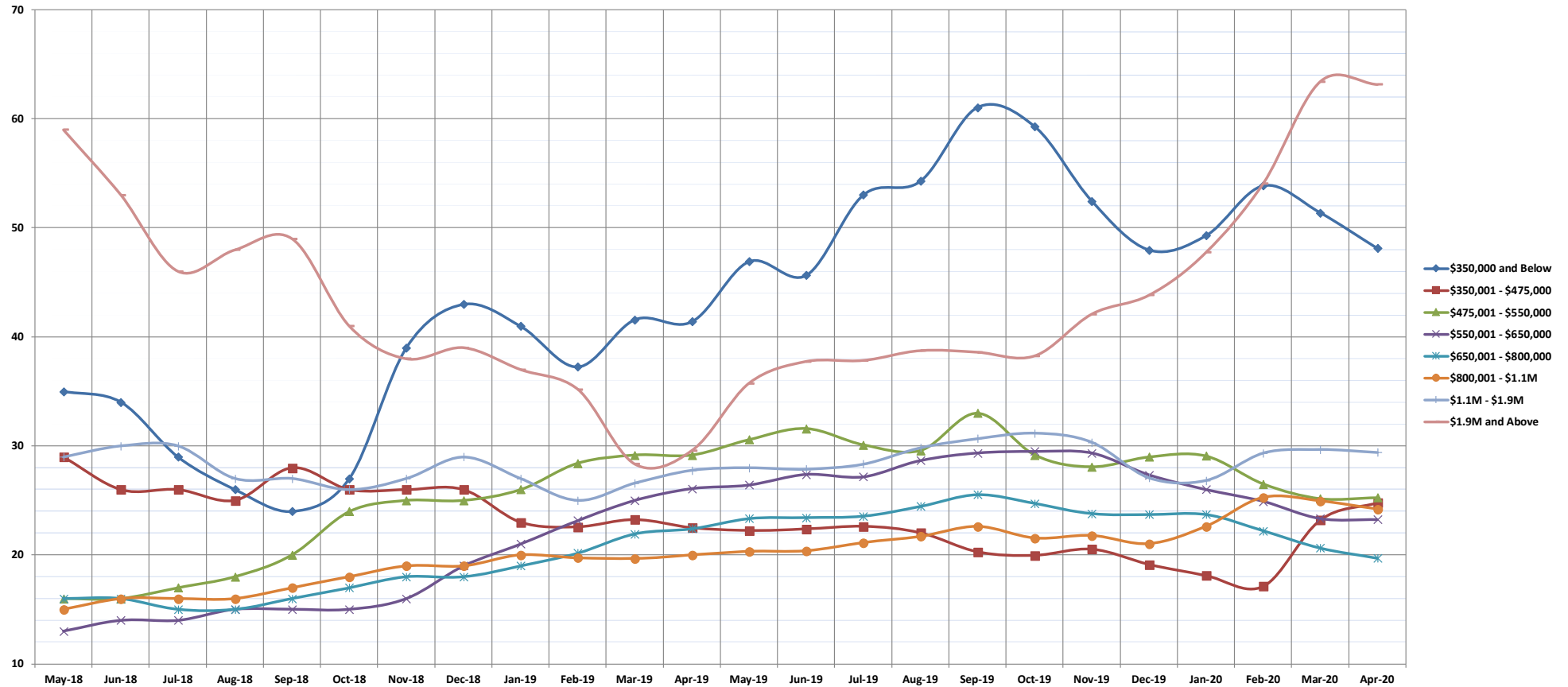
©Copyright 2020. Honolulu Board of REALTORS®, All Rights Reserved. Information herein deemed reliable but not guaranteed.

Days on Market Until Sale

April 2020

Single Family Homes: Monthly, by Price Range

(The median number of days between when a property is first listed and when an offer is accepted. Based on a 12 month rolling median.)



	May-18	Jun-18	Jul-18	Aug-18	Sep-18	Oct-18	Nov-18	Dec-18	Jan-19	Feb-19	Mar-19	Apr-19	May-19	Jun-19	Jul-19	Aug-19	Sep-19	Oct-19	Nov-19	Dec-19	Jan-20	Feb-20	Mar-20	Apr-20
\$350,000 and Below	35	34	29	26	24	27	39	43	41	37	42	41	47	46	53	54	61	59	52	48	49	54	51	48
\$350,001 - \$475,000	29	26	26	25	28	26	26	26	23	23	23	23	22	22	23	22	20	20	21	19	18	17	23	25
\$475,001 - \$550,000	16	16	17	18	20	24	25	25	26	28	29	29	31	32	30	30	33	29	28	29	29	27	25	25
\$550,001 - \$650,000	13	14	14	15	15	15	16	19	21	23	25	26	26	27	27	29	29	30	29	27	26	25	23	23
\$650,001 - \$800,000	16	16	15	15	16	17	18	18	19	20	22	22	23	23	24	24	26	25	24	24	24	22	21	20
\$800,001 - \$1.1M	15	16	16	16	17	18	19	19	20	20	20	20	20	20	21	22	23	22	22	21	23	25	25	24
\$1.1M - \$1.9M	29	30	30	27	27	26	27	29	27	25	27	28	28	28	28	30	31	31	30	27	27	29	30	29
\$1.9M and Above	59	53	46	48	49	41	38	39	37	35	28	30	36	38	38	39	39	38	42	44	48	54	63	63
All Single Family Homes	17	17	16	16	16	18	19	19	20	20	21	22	22	23	23	24	25	24	24	23	24	25	24	23

SOURCE: Honolulu Board of REALTORS®, compiled from MLS data.

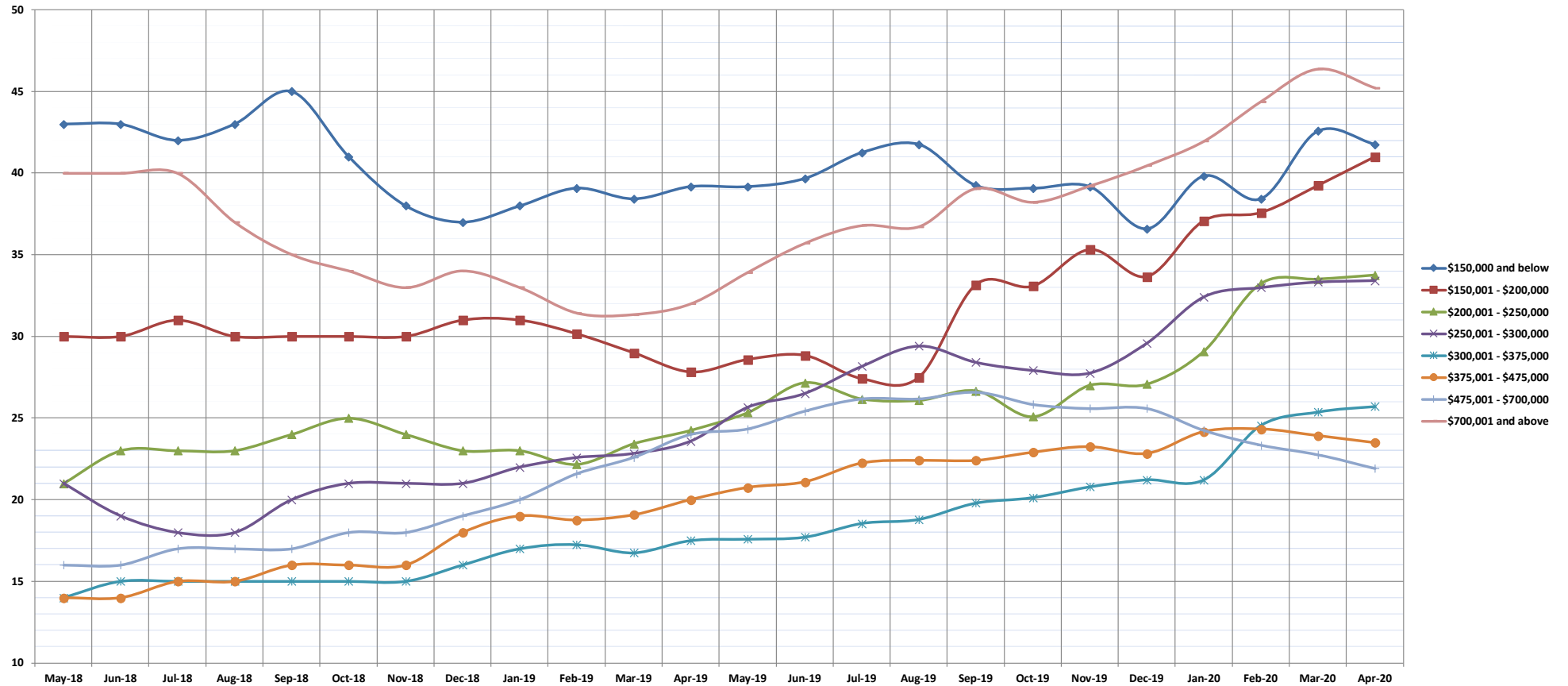
©Copyright 2020. Honolulu Board of REALTORS®, All Rights Reserved. Information herein deemed reliable but not guaranteed.

Days on Market Until Sale

April 2020

Condos: Monthly, by Price Range

(The median number of days between when a property is first listed and when an offer is accepted. Based on a 12 month rolling median.)



	May-18	Jun-18	Jul-18	Aug-18	Sep-18	Oct-18	Nov-18	Dec-18	Jan-19	Feb-19	Mar-19	Apr-19	May-19	Jun-19	Jul-19	Aug-19	Sep-19	Oct-19	Nov-19	Dec-19	Jan-20	Feb-20	Mar-20	Apr-20
\$150,000 and below	43	43	42	43	45	41	38	37	38	39	38	39	39	40	41	42	39	39	39	37	40	38	43	42
\$150,001 - \$200,000	30	30	31	30	30	30	30	31	31	30	29	28	29	29	27	28	33	33	35	34	37	38	39	41
\$200,001 - \$250,000	21	23	23	23	24	25	24	23	23	22	23	24	25	27	26	26	27	25	27	27	29	33	34	34
\$250,001 - \$300,000	21	19	18	18	20	21	21	21	22	23	23	24	26	27	28	29	28	28	28	30	32	33	33	33
\$300,001 - \$375,000	14	15	15	15	15	15	15	16	17	17	17	18	18	18	19	19	20	20	21	21	21	25	25	26
\$375,001 - \$475,000	14	14	15	15	16	16	16	18	19	19	19	20	21	21	22	22	22	23	23	23	24	24	24	24
\$475,001 - \$700,000	16	16	17	17	17	18	18	19	20	22	23	24	24	25	26	26	27	26	26	26	24	23	23	22
\$700,001 and above	40	40	40	37	35	34	33	34	33	31	31	32	34	36	37	37	39	38	39	40	42	44	46	45
All Condos	18	19	19	19	19	19	20	20	21	21	21	22	23	24	24	25	25	25	26	26	27	27	28	27

SOURCE: Honolulu Board of REALTORS®, compiled from MLS data.

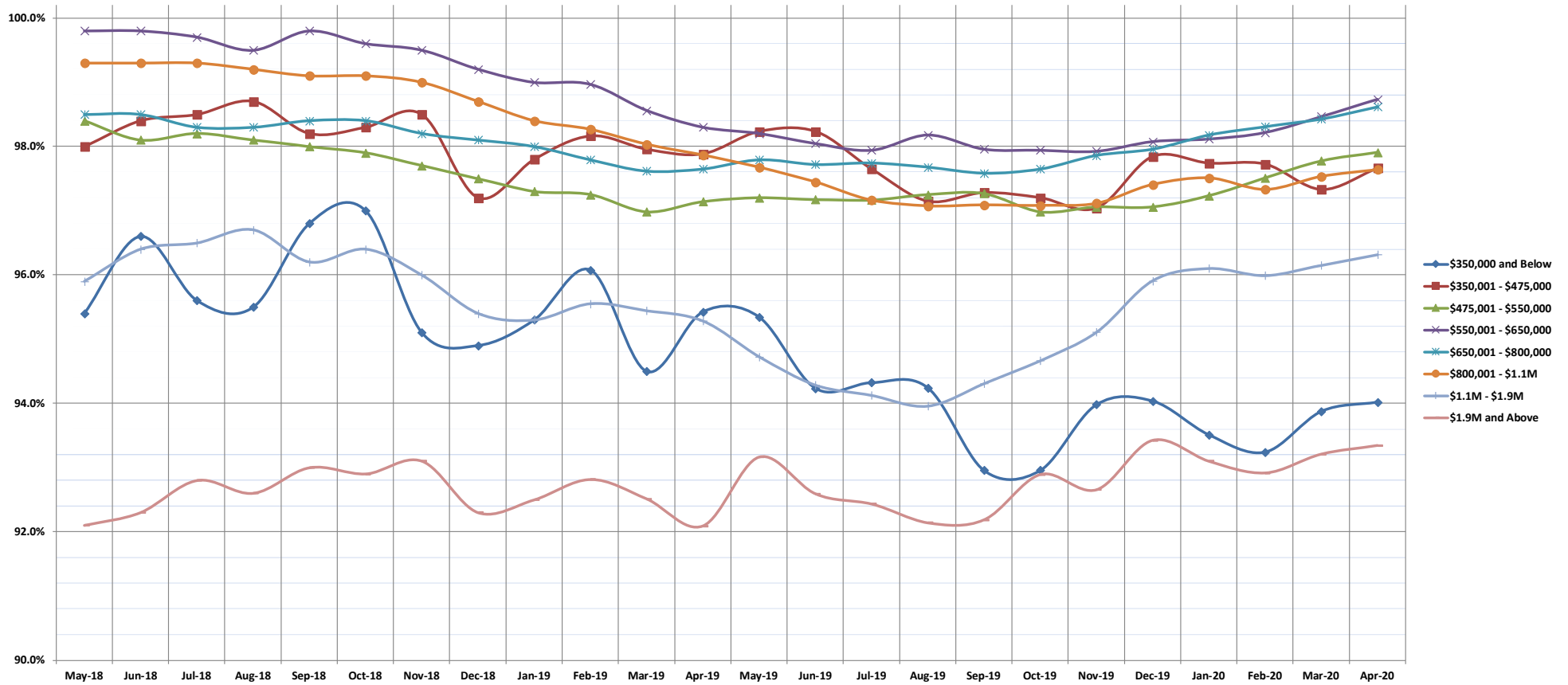
©Copyright 2020. Honolulu Board of REALTORS®, All Rights Reserved. Information herein deemed reliable but not guaranteed.

Percentage of Original List Price Received

April 2020

Single Family Homes: Monthly, by Price Range

(The average percentage found when dividing a property's sales price by the original list price. Based on a rolling 12 month average.)



	May-18	Jun-18	Jul-18	Aug-18	Sep-18	Oct-18	Nov-18	Dec-18	Jan-19	Feb-19	Mar-19	Apr-19	May-19	Jun-19	Jul-19	Aug-19	Sep-19	Oct-19	Nov-19	Dec-19	Jan-20	Feb-20	Mar-20	Apr-20
\$350,000 and Below	95.4%	96.6%	95.6%	95.5%	96.8%	97.0%	95.1%	94.9%	95.3%	96.1%	94.5%	95.4%	95.3%	94.2%	94.3%	94.2%	93.0%	93.0%	94.0%	94.0%	93.5%	93.2%	93.9%	94.0%
\$350,001 - \$475,000	98.0%	98.4%	98.5%	98.7%	98.0%	98.3%	98.5%	97.2%	97.8%	97.2%	97.3%	97.3%	98.0%	97.9%	97.1%	97.2%	98.2%	97.3%	97.0%	97.2%	97.7%	97.7%	97.3%	97.7%
\$475,001 - \$550,000	98.4%	98.1%	98.2%	98.1%	98.0%	97.9%	97.7%	97.5%	97.3%	97.3%	97.0%	97.1%	97.2%	97.2%	97.2%	97.3%	97.3%	97.0%	97.1%	97.1%	97.2%	97.5%	97.8%	97.9%
\$550,001 - \$650,000	99.8%	99.8%	99.7%	99.5%	99.8%	99.6%	99.5%	99.2%	99.0%	99.0%	98.6%	98.3%	98.2%	98.0%	97.9%	98.2%	98.0%	97.9%	97.9%	98.1%	98.1%	98.2%	98.5%	98.7%
\$650,001 - \$800,000	98.5%	98.5%	98.3%	98.3%	98.4%	98.4%	98.2%	98.1%	98.0%	97.8%	97.6%	97.7%	97.8%	97.7%	97.7%	97.7%	97.6%	97.7%	97.9%	98.0%	98.2%	98.3%	98.4%	98.6%
\$800,001 - \$1.1M	99.3%	99.3%	99.3%	99.2%	99.1%	99.1%	99.0%	98.7%	98.4%	98.3%	98.0%	97.9%	97.7%	97.4%	97.2%	97.1%	97.1%	97.1%	97.1%	97.4%	97.5%	97.3%	97.5%	97.6%
\$1.1M - \$1.9M	95.9%	96.4%	96.5%	96.7%	96.2%	96.4%	96.0%	95.4%	95.3%	95.6%	95.4%	95.3%	94.7%	94.3%	94.1%	94.0%	94.3%	94.7%	95.1%	95.9%	96.1%	96.0%	96.2%	96.3%
\$1.9M and Above	92.1%	92.3%	92.8%	92.6%	93.0%	92.9%	93.1%	92.3%	92.5%	92.8%	92.5%	92.1%	93.2%	92.6%	92.4%	92.1%	92.2%	92.9%	92.7%	93.4%	93.1%	92.9%	93.2%	93.3%
All Single Family Homes	98.3%	98.2%	98.4%	98.4%	98.4%	98.4%	98.3%	98.4%	98.2%	97.9%	97.9%	97.9%	97.9%	97.8%	97.6%	97.5%	97.4%	97.5%	97.6%	97.5%	97.7%	97.8%	97.9%	98.0%

SOURCE: Honolulu Board of REALTORS®, compiled from MLS data.

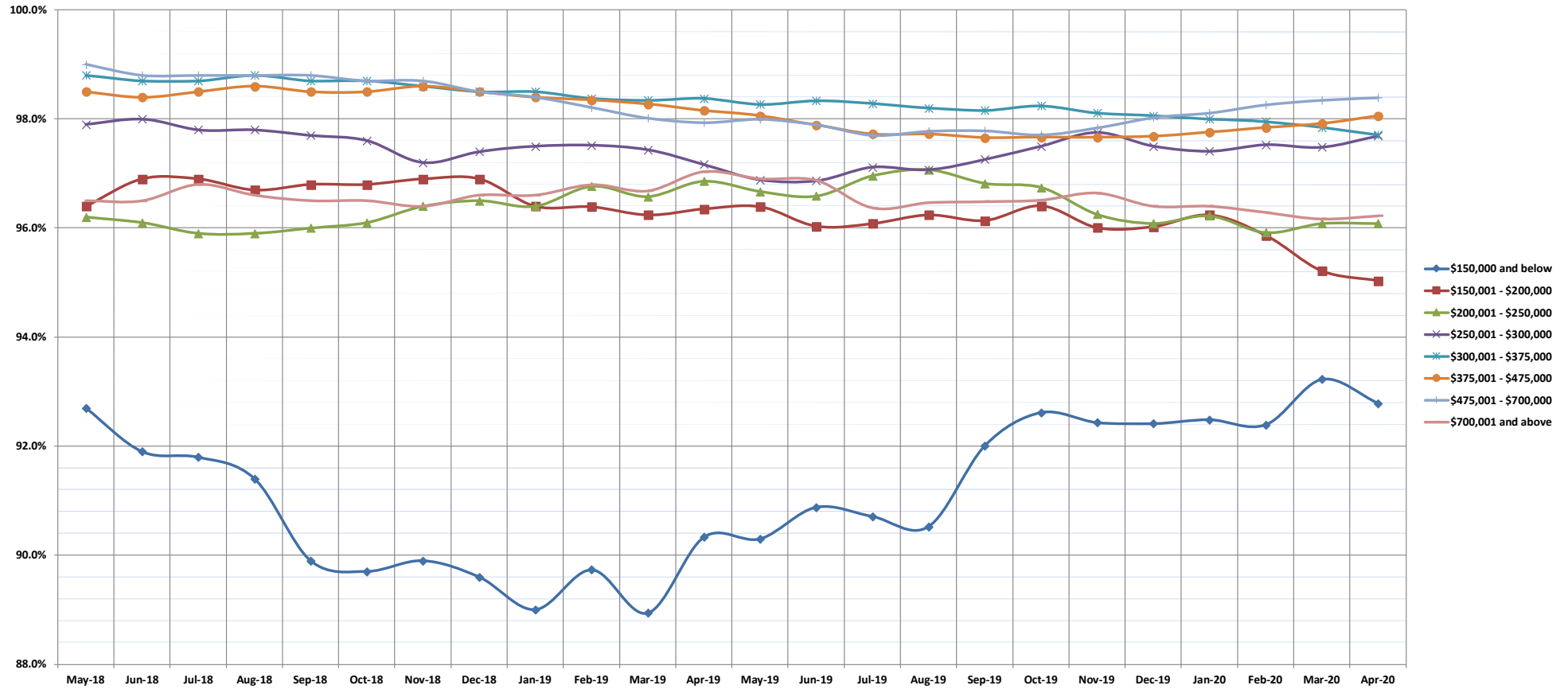
©Copyright 2020. Honolulu Board of REALTORS®, All Rights Reserved. Information herein deemed reliable but not guaranteed.

Percentage of Original List Price Received

April 2020

Condos: Monthly, by Price Range

(The average percentage found when dividing a property's sales price by the original list price. Based on a rolling 12 month average.)



	May-18	Jun-18	Jul-18	Aug-18	Sep-18	Oct-18	Nov-18	Dec-18	Jan-19	Feb-19	Mar-19	Apr-19	May-19	Jun-19	Jul-19	Aug-19	Sep-19	Oct-19	Nov-19	Dec-19	Jan-20	Feb-20	Mar-20	Apr-20
\$150,000 and below	92.7%	91.9%	91.8%	91.4%	89.9%	89.7%	89.9%	89.6%	89.0%	89.7%	88.9%	90.3%	90.3%	90.9%	90.7%	90.5%	92.0%	92.6%	92.4%	92.4%	92.5%	92.4%	93.2%	92.8%
\$150,001 - \$200,000	96.4%	96.9%	96.9%	96.7%	96.8%	96.8%	96.9%	96.9%	96.4%	96.4%	96.2%	96.4%	96.4%	96.0%	96.1%	96.2%	96.1%	96.4%	96.0%	96.0%	96.2%	95.9%	95.2%	95.0%
\$200,001 - \$250,000	96.2%	96.1%	95.9%	95.9%	96.0%	96.1%	96.4%	96.5%	96.4%	96.8%	96.6%	96.9%	96.7%	96.6%	97.0%	97.1%	96.8%	96.7%	96.3%	96.1%	96.2%	95.9%	96.1%	96.1%
\$250,001 - \$300,000	97.9%	98.0%	97.8%	97.8%	97.7%	97.6%	97.2%	97.4%	97.5%	97.5%	97.4%	97.2%	96.9%	96.9%	97.1%	97.1%	97.3%	97.5%	97.8%	97.5%	97.4%	97.5%	97.5%	97.7%
\$300,001 - \$375,000	98.8%	98.7%	98.7%	98.8%	98.7%	98.7%	98.6%	98.5%	98.5%	98.4%	98.3%	98.4%	98.3%	98.3%	98.3%	98.2%	98.2%	98.2%	98.1%	98.1%	98.0%	98.0%	97.8%	97.7%
\$375,001 - \$475,000	98.5%	98.4%	98.5%	98.6%	98.5%	98.5%	98.6%	98.5%	98.4%	98.4%	98.3%	98.2%	98.1%	97.9%	97.7%	97.7%	97.7%	97.7%	97.7%	97.7%	97.8%	97.8%	97.9%	98.1%
\$475,001 - \$700,000	99.0%	98.8%	98.8%	98.8%	98.8%	98.7%	98.7%	98.5%	98.4%	98.2%	98.0%	97.9%	98.0%	97.9%	97.7%	97.8%	97.8%	97.7%	97.8%	98.0%	98.1%	98.3%	98.3%	98.4%
\$700,001 and above	96.5%	96.5%	96.8%	96.6%	96.5%	96.5%	96.4%	96.6%	96.6%	96.8%	96.7%	97.0%	96.9%	96.9%	96.4%	96.5%	96.5%	96.5%	96.6%	96.4%	96.4%	96.3%	96.2%	96.2%
All Condos	98.5%	98.3%	98.2%	98.3%	98.2%	98.3%	98.2%	98.3%	98.3%	98.2%	98.1%	98.0%	97.9%	97.8%	97.6%	97.6%	97.5%	97.5%	97.5%	97.3%	97.4%	97.4%	97.4%	97.5%

SOURCE: Honolulu Board of REALTORS®, compiled from MLS data.

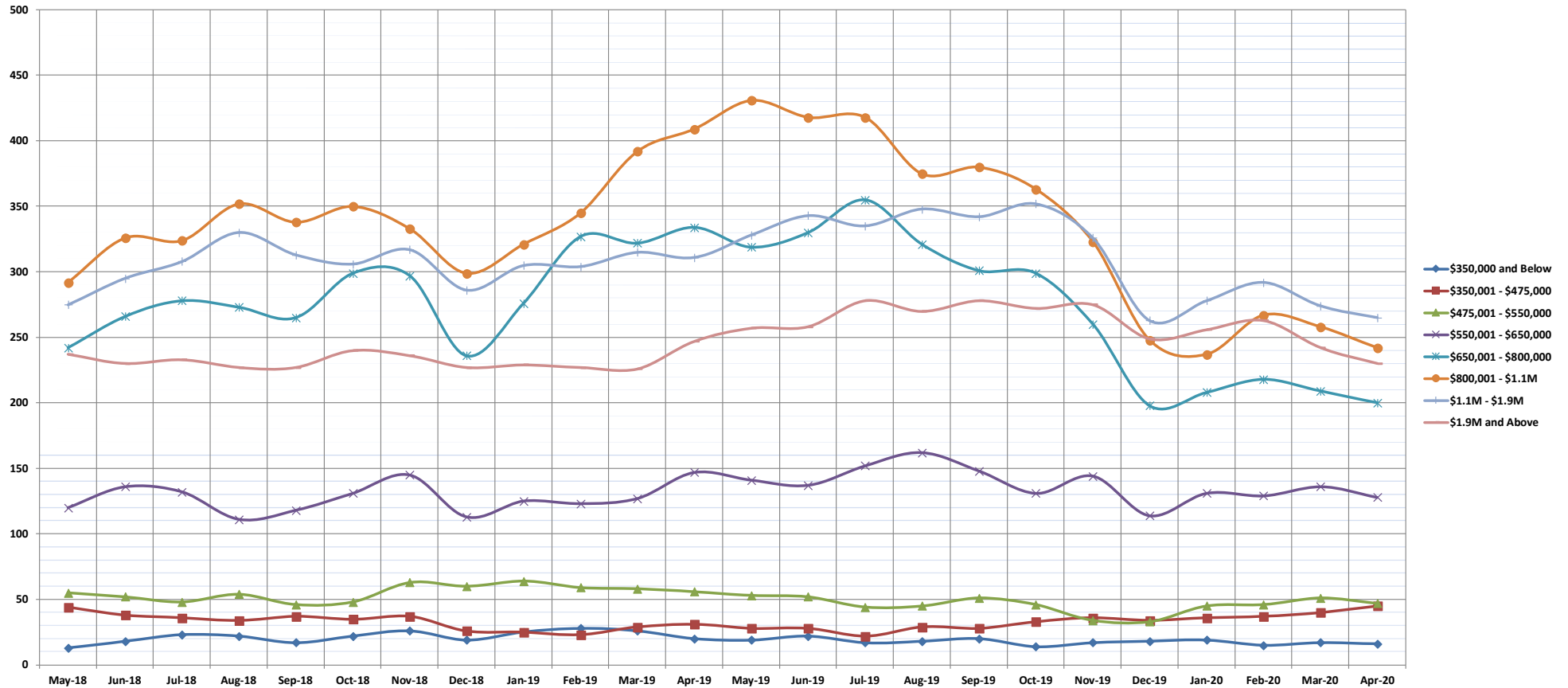
©Copyright 2020. Honolulu Board of REALTORS®, All Rights Reserved. Information herein deemed reliable but not guaranteed.

Inventory of Homes for Sale

April 2020

Single Family Homes: Monthly, by Price Range

(The number of properties available for sale in active status at the end of a given month)



	May-18	Jun-18	Jul-18	Aug-18	Sep-18	Oct-18	Nov-18	Dec-18	Jan-19	Feb-19	Mar-19	Apr-19	May-19	Jun-19	Jul-19	Aug-19	Sep-19	Oct-19	Nov-19	Dec-19	Jan-20	Feb-20	Mar-20	Apr-20
\$350,000 and Below	13	18	23	22	17	22	26	19	25	28	26	20	19	22	17	18	20	14	17	18	19	15	17	16
\$350,001 - \$475,000	44	38	36	34	37	35	37	26	25	23	29	31	28	28	22	29	28	33	36	34	36	37	40	45
\$475,001 - \$550,000	55	52	48	54	46	48	63	60	64	59	58	56	53	52	44	45	51	46	34	33	45	46	51	47
\$550,001 - \$650,000	120	136	132	111	118	131	145	113	125	123	127	147	141	137	152	162	148	131	144	114	131	129	136	128
\$650,001 - \$800,000	242	266	278	273	265	299	297	236	276	327	322	334	319	330	355	321	301	299	260	198	208	218	209	200
\$800,001 - \$1.1M	292	326	324	352	338	350	333	299	321	345	392	409	431	418	418	375	380	363	323	248	237	267	258	242
\$1.1M - \$1.9M	275	295	308	330	313	306	317	286	305	304	315	311	328	343	335	348	342	352	326	263	278	292	274	265
\$1.9M and Above	237	230	233	227	227	240	236	227	229	227	226	247	257	258	278	270	278	272	275	249	256	263	242	230
All Single Family Homes	1278	1361	1382	1403	1361	1431	1454	1266	1370	1436	1495	1555	1576	1588	1621	1568	1548	1510	1415	1157	1210	1267	1227	1173

SOURCE: Honolulu Board of REALTORS®, compiled from MLS data.

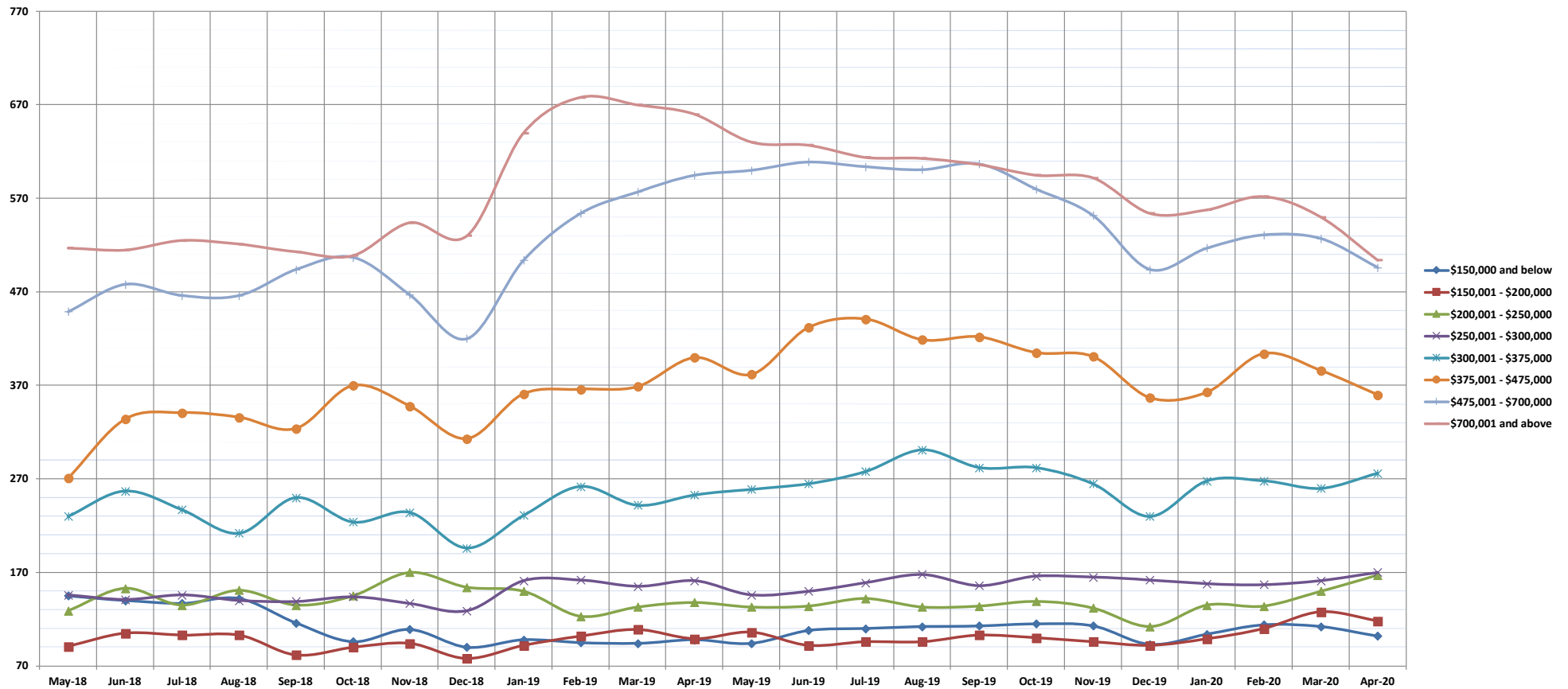
©Copyright 2020. Honolulu Board of REALTORS®, All Rights Reserved. Information herein deemed reliable but not guaranteed.

Inventory of Homes for Sale

April 2020

Condos: Monthly, by Price Range

(The number of properties available for sale in active status at the end of a given month)



	May-18	Jun-18	Jul-18	Aug-18	Sep-18	Oct-18	Nov-18	Dec-18	Jan-19	Feb-19	Mar-19	Apr-19	May-19	Jun-19	Jul-19	Aug-19	Sep-19	Oct-19	Nov-19	Dec-19	Jan-20	Feb-20	Mar-20	Apr-20
\$150,000 and below	145	140	137	142	116	96	109	90	98	95	94	98	94	108	110	112	113	115	113	93	104	114	112	102
\$150,001 - \$200,000	91	105	103	103	82	90	94	78	92	102	109	99	106	92	96	96	103	100	96	92	99	110	128	118
\$200,001 - \$250,000	129	153	135	151	135	145	170	154	150	123	133	138	133	134	142	133	134	139	132	112	135	134	150	167
\$250,001 - \$300,000	146	141	146	140	139	144	137	129	161	162	155	161	146	150	159	168	156	166	165	162	158	157	161	170
\$300,001 - \$375,000	230	257	237	212	250	224	234	196	231	262	242	253	259	265	278	301	282	282	265	230	268	268	260	276
\$375,001 - \$475,000	271	334	341	336	324	370	348	313	361	366	369	400	382	432	441	419	422	405	401	357	363	404	386	360
\$475,001 - \$700,000	449	478	466	466	494	507	467	420	504	554	577	595	600	609	604	601	607	580	552	494	517	531	527	496
\$700,001 and above	517	515	525	521	513	509	544	530	640	678	670	660	630	627	614	613	606	595	592	554	558	572	550	504
All Condos	1978	2123	2090	2071	2053	2085	2103	1910	2237	2342	2349	2404	2350	2417	2444	2443	2423	2382	2316	2094	2202	2290	2274	2193

SOURCE: Honolulu Board of REALTORS®, compiled from MLS data.

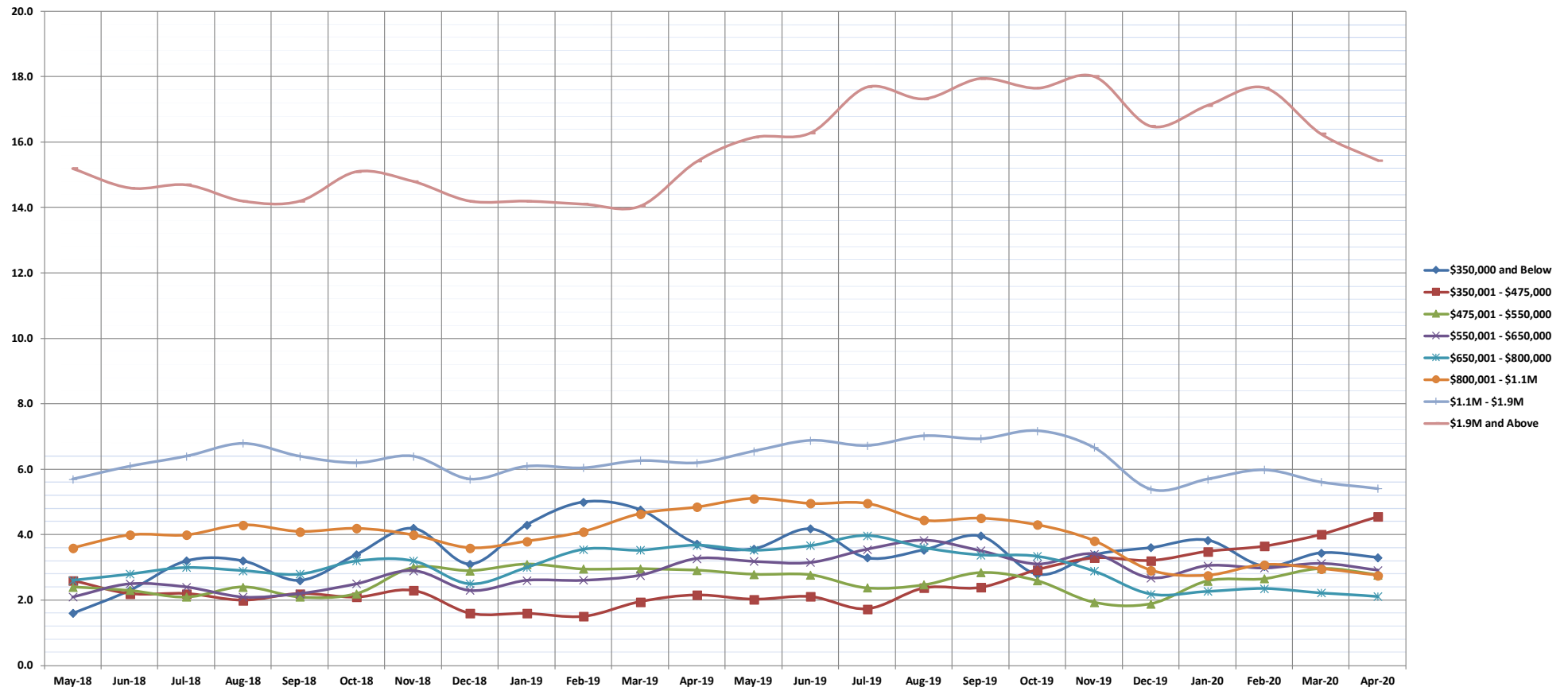
©Copyright 2020. Honolulu Board of REALTORS®, All Rights Reserved. Information herein deemed reliable but not guaranteed.

Months Supply of Inventory

April 2020

Single Family Homes: Monthly, by Price Range

(Compares the number of active listings available to the average monthly pending sales from the last 12 months)



	May-18	Jun-18	Jul-18	Aug-18	Sep-18	Oct-18	Nov-18	Dec-18	Jan-19	Feb-19	Mar-19	Apr-19	May-19	Jun-19	Jul-19	Aug-19	Sep-19	Oct-19	Nov-19	Dec-19	Jan-20	Feb-20	Mar-20	Apr-20
\$350,000 and Below	1.6	2.3	3.2	3.2	2.6	3.4	4.2	3.1	4.3	5.0	4.8	3.7	3.6	4.2	3.3	3.5	4.0	2.8	3.4	3.6	3.8	3.0	3.4	3.3
\$350,001 - \$475,000	2.6	2.2	2.2	2.0	2.2	2.1	2.3	1.6	1.6	1.5	2.0	2.2	2.0	2.1	1.7	2.4	2.4	2.9	3.3	3.2	3.5	3.7	4.0	4.6
\$475,001 - \$550,000	2.4	2.3	2.1	2.4	2.1	2.2	3.0	2.9	3.1	3.0	3.0	2.9	2.8	2.8	2.4	2.5	2.8	2.6	1.9	1.9	2.6	2.7	3.0	2.8
\$550,001 - \$650,000	2.1	2.5	2.4	2.1	2.2	2.5	2.9	2.3	2.6	2.6	2.8	3.3	3.2	3.2	3.6	3.8	3.5	3.1	3.4	2.7	3.1	3.0	3.1	2.9
\$650,001 - \$800,000	2.6	2.8	3.0	2.9	2.8	3.2	3.2	2.5	3.0	3.6	3.5	3.7	3.5	3.7	4.0	3.6	3.4	3.3	2.9	2.2	2.3	2.4	2.2	2.1
\$800,001 - \$1.1M	3.6	4.0	4.0	4.3	4.1	4.2	4.0	3.6	3.8	4.1	4.6	4.8	5.1	5.0	5.0	4.4	4.5	4.3	3.8	2.9	2.8	3.1	3.0	2.8
\$1.1M - \$1.9M	5.7	6.1	6.4	6.8	6.4	6.2	6.4	5.7	6.1	6.0	6.3	6.2	6.6	6.9	6.7	7.0	6.9	7.2	6.7	5.4	5.7	6.0	5.6	5.4
\$1.9M and Above	15.2	14.6	14.7	14.2	14.2	15.1	14.8	14.2	14.2	14.1	14.0	15.4	16.1	16.3	17.7	17.3	17.9	17.7	18.0	16.5	17.1	17.7	16.3	15.4
All Single Family Homes	3.7	4.0	4.1	4.1	4.0	4.2	4.3	3.8	4.1	4.3	4.6	4.8	4.9	5.0	5.1	5.0	4.9	4.8	4.5	3.7	3.8	4.0	3.8	3.6

SOURCE: Honolulu Board of REALTORS®, compiled from MLS data.

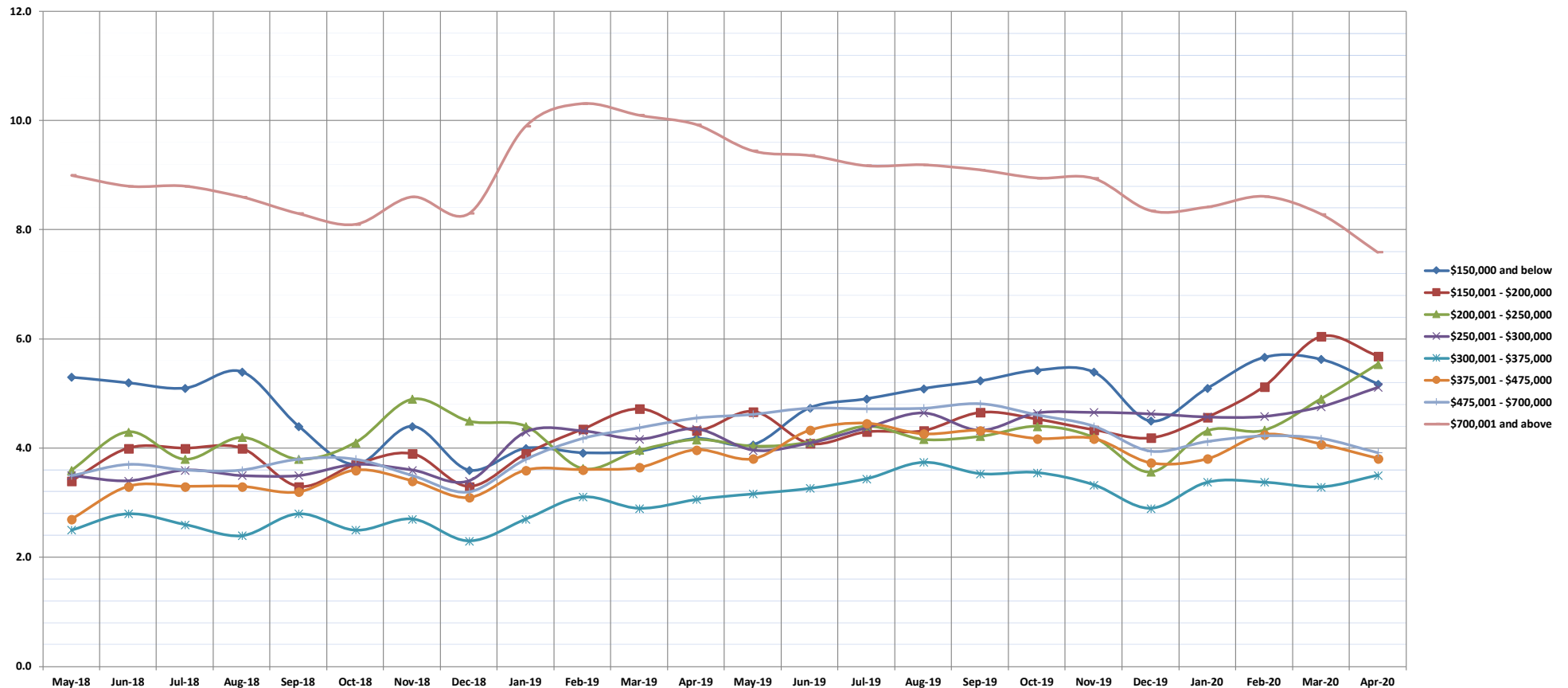
©Copyright 2020. Honolulu Board of REALTORS®, All Rights Reserved. Information herein deemed reliable but not guaranteed.

Months Supply of Inventory

April 2020

Condos: Monthly, by Price Range

(Compares the number of active listings available to the average monthly pending sales from the last 12 months)



	May-18	Jun-18	Jul-18	Aug-18	Sep-18	Oct-18	Nov-18	Dec-18	Jan-19	Feb-19	Mar-19	Apr-19	May-19	Jun-19	Jul-19	Aug-19	Sep-19	Oct-19	Nov-19	Dec-19	Jan-20	Feb-20	Mar-20	Apr-20
\$150,000 and below	5.3	5.2	5.1	5.4	4.4	3.7	4.4	3.6	4.0	3.9	3.9	4.2	4.1	4.7	4.9	5.1	5.2	5.4	5.4	4.5	5.1	5.7	5.6	5.2
\$150,001 - \$200,000	3.4	4.0	4.0	4.0	3.3	3.7	3.9	3.3	3.9	4.4	4.7	4.3	4.7	4.1	4.3	4.3	4.7	4.5	4.3	4.2	4.6	5.1	6.0	5.7
\$200,001 - \$250,000	3.6	4.3	3.8	4.2	3.8	4.1	4.9	4.5	4.4	3.6	4.0	4.2	4.0	4.1	4.4	4.2	4.2	4.4	4.2	3.6	4.3	4.3	4.9	5.5
\$250,001 - \$300,000	3.5	3.4	3.6	3.5	3.5	3.7	3.6	3.4	4.3	4.3	4.2	4.4	4.0	4.1	4.4	4.6	4.3	4.6	4.7	4.6	4.6	4.6	4.8	5.1
\$300,001 - \$375,000	2.5	2.8	2.6	2.4	2.8	2.5	2.7	2.3	2.7	3.1	2.9	3.1	3.2	3.3	3.4	3.7	3.5	3.6	3.3	2.9	3.4	3.4	3.3	3.5
\$375,001 - \$475,000	2.7	3.3	3.3	3.3	3.2	3.6	3.4	3.1	3.6	3.6	3.6	4.0	3.8	4.3	4.5	4.3	4.3	4.2	4.2	3.7	3.8	4.3	4.1	3.8
\$475,001 - \$700,000	3.5	3.7	3.6	3.6	3.8	3.8	3.5	3.2	3.8	4.2	4.4	4.5	4.6	4.7	4.7	4.7	4.8	4.6	4.4	3.9	4.1	4.2	4.2	3.9
\$700,001 and above	9.0	8.8	8.8	8.6	8.3	8.1	8.6	8.3	9.9	10.3	10.1	9.9	9.4	9.4	9.2	9.2	9.1	8.9	8.9	8.3	8.4	8.6	8.3	7.6
All Condos	3.9	4.2	4.1	4.1	4.0	4.1	4.2	3.8	4.5	4.7	4.7	4.8	4.8	4.9	5.0	5.0	5.0	5.0	4.9	4.4	4.6	4.8	4.8	4.7

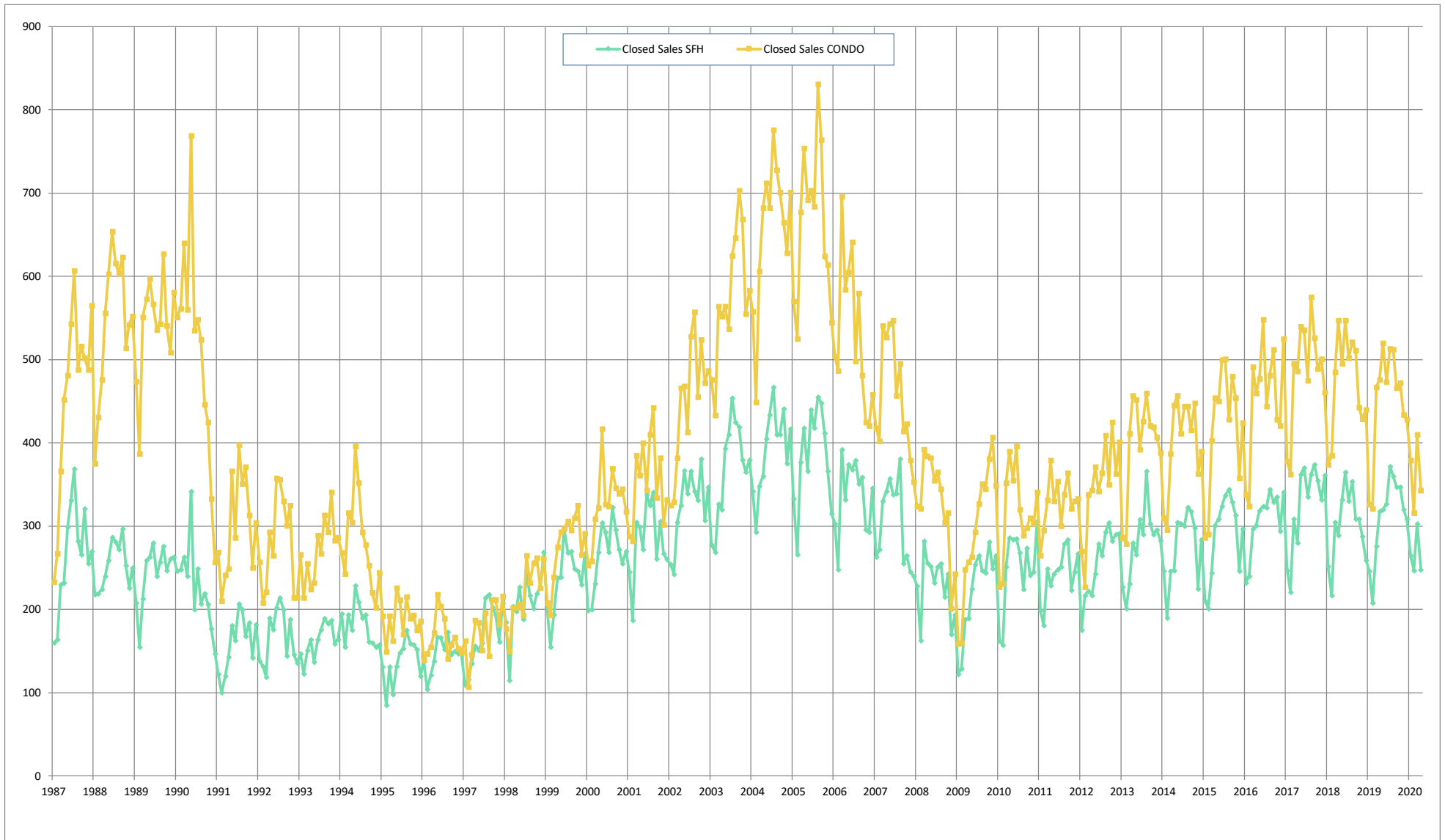
SOURCE: Honolulu Board of REALTORS®, compiled from MLS data.

©Copyright 2020. Honolulu Board of REALTORS®, All Rights Reserved. Information herein deemed reliable but not guaranteed.

Closed Sales

Single Family Homes and Condos

OAHU, HAWAII: Jan 1987 to the Present



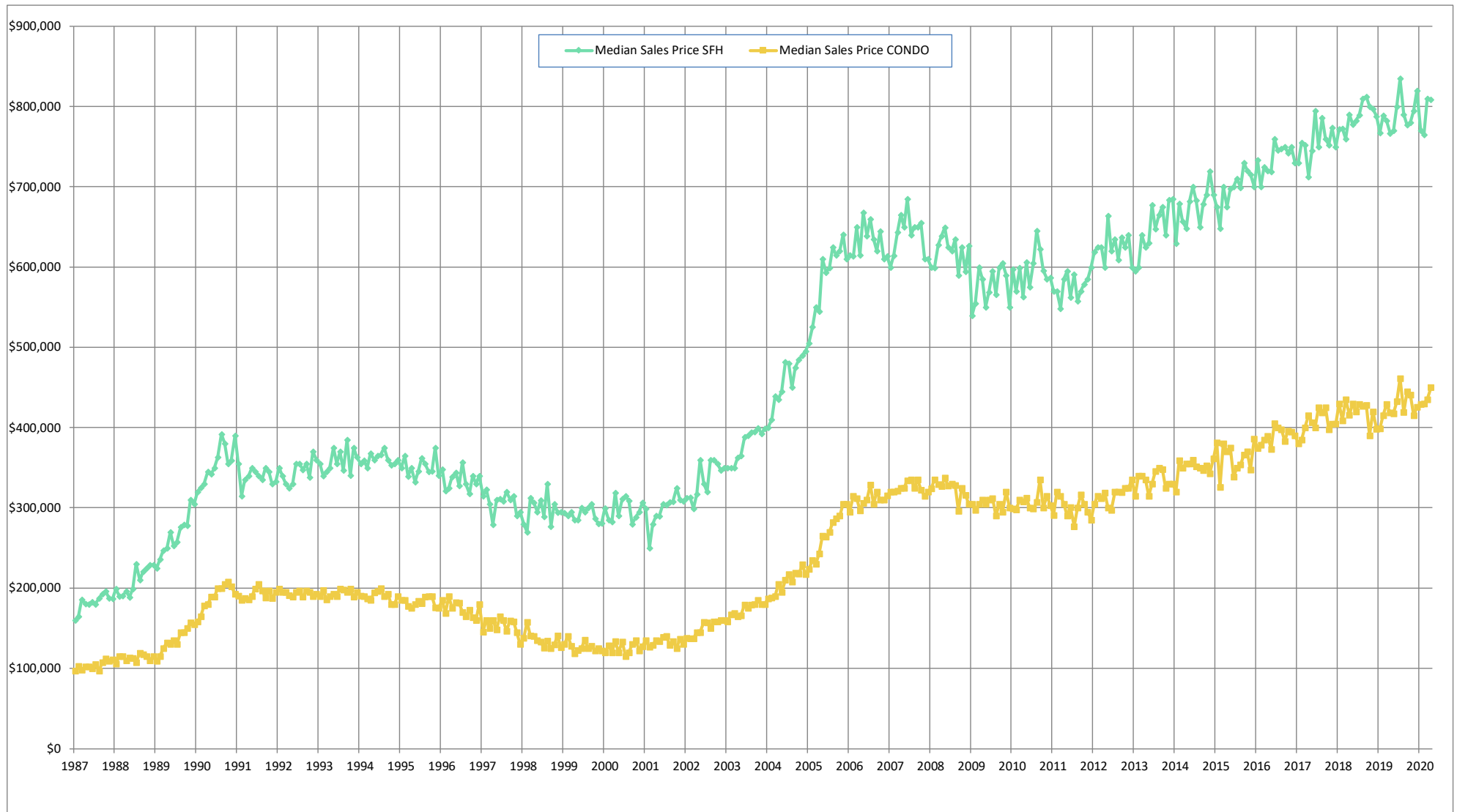
SOURCE: Honolulu Board of REALTORS®, compiled from MLS data.

©Copyright 2020. Honolulu Board of REALTORS®. All Rights Reserved. Information herein deemed reliable but not guaranteed.

Median Sales Price

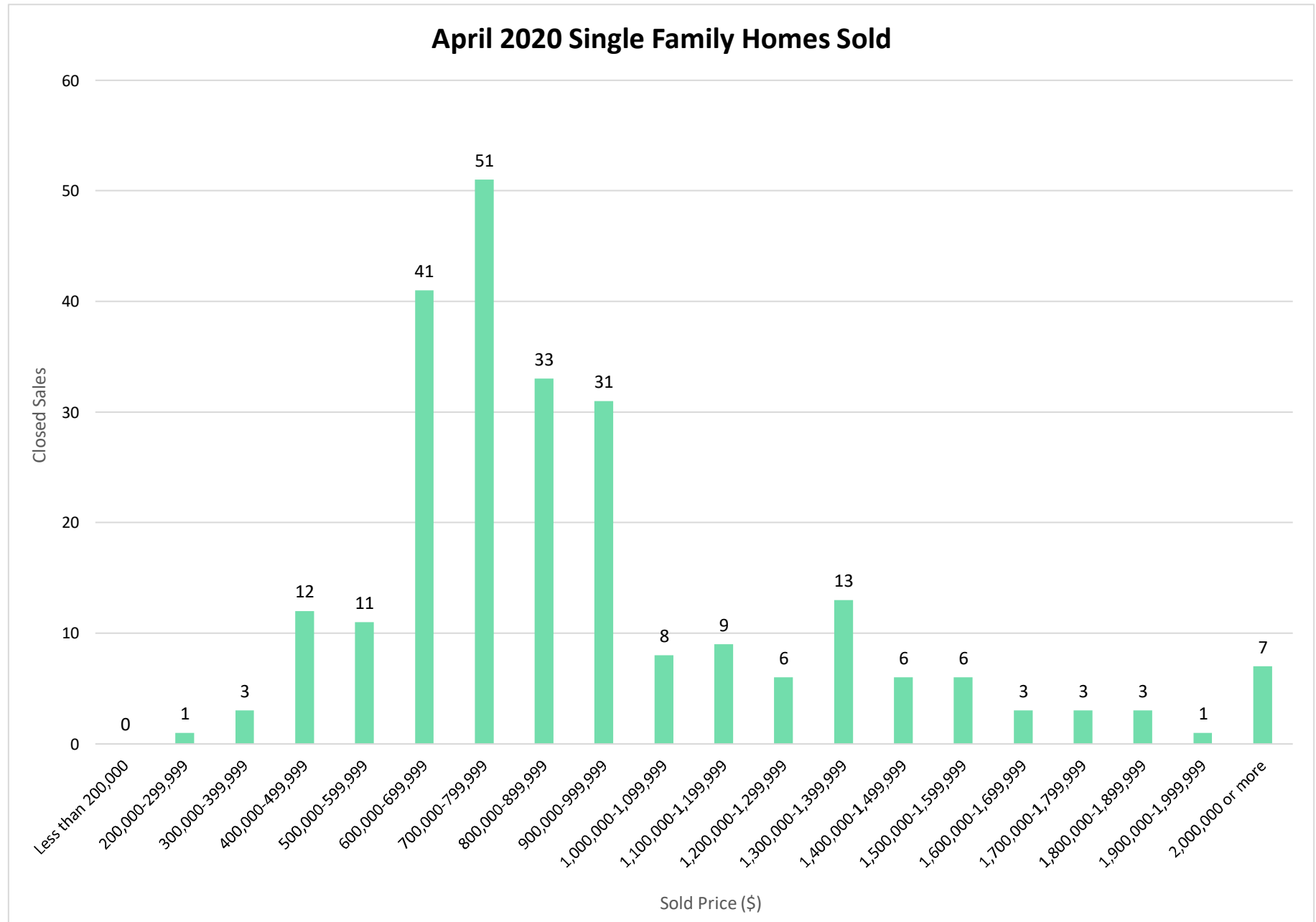
Single Family Homes and Condos

OAHU, HAWAII: Jan 1987 to the Present



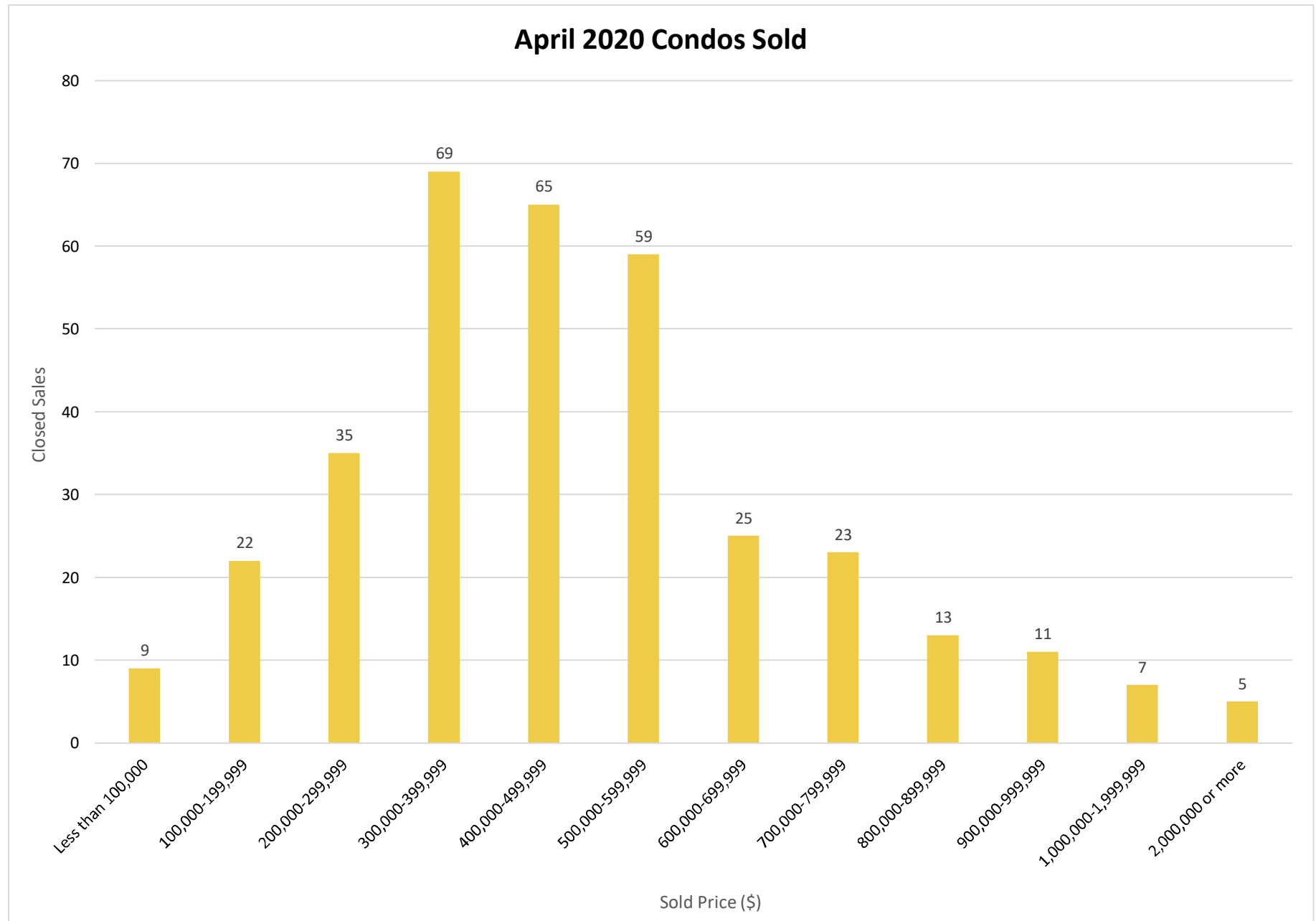
SOURCE: Honolulu Board of REALTORS®, compiled from MLS data.

©Copyright 2020. Honolulu Board of REALTORS®. All Rights Reserved. Information herein deemed reliable but not guaranteed.



SOURCE: Honolulu Board of REALTORS®, compiled from MLS data.

©Copyright 2020. Honolulu Board of REALTORS®. All Rights Reserved. Information herein deemed reliable but not guaranteed.



SOURCE: Honolulu Board of REALTORS®, compiled from MLS data.

©Copyright 2020. Honolulu Board of REALTORS®. All Rights Reserved. Information herein deemed reliable but not guaranteed.