

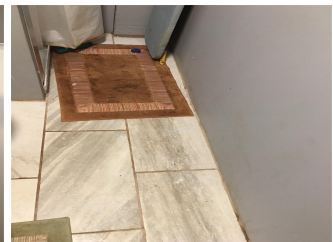
94-1100 Kunia Road Unit 56, Waipahu 96797 * \$550,000 * Originally \$650,000

Beds: 0	MLS#: 202303901, LH	Year Built:
Bath: 0/0	Status: Active	Remodeled:
Living Sq. Ft.: 0	List Date & DOM: 04-03-2023 & 424	Total Parking:
Land Sq. Ft.: 43,560	Condition:	Assessed Value
Lanai Sq. Ft.: 0	Frontage:	Building: \$0
Sq. Ft. Other: 0	Tax/Year: \$30/2023	Land: \$224,700
Total Sq. Ft. 0	Neighborhood: Ag/preserve	Total: \$224,700
Maint./Assoc. \$135 / \$100	Flood Zone : Zone D - Tool	Stories / CPR: / No
Parking:	Frontage:	

[Zoning](#): **51 - AG-1 Restricted Agricultur**

View: **City, Coastline, Diamond Head, Mountain, Ocean, Sunrise, Sunset**

Public Remarks: SPECTALUAR VIEW OF CITY, COASTLINE, DIAMOND HEAD, AND OCEAN VIEW FROM YOUR LANI ! TURN-KEY OFF GRID ONE ACRE FARM. EQUIPED WITH SOLAR SYSTEM W/INVERTER, CONTROLLER W/ 8 BATTERY & 12 SOLAR PANNELS ON A SHED W/COMPOSITION ROOF SECURED. ABOUT 5KV USAGE PER DAY. WATER ENCATCHMENT W/ REVERSE OSOMOSIS FILTERATION SYSTEM TO DRINK WATER. NEWER STRUCTURE 1200 SQ. FT. w/ LANI 250 SQ. FT. W/ THREE ROOMS FINISHED DOUBLE WALLED. KITCHEN IS NEW W/ CABINETS & GRANITE TOPS AND REF. USING ABOUT 460 KV. LANDING 202X20 TO ENJOY LOOKING OVER THE CITY LIGHTS AT NIGHT WHILE DINNING. NEW 250 SQ. FT. STRUCTURE FOR OFFICE/FARM WORKERS/RENTAL. FARM PRODUCES INCOME FROM FRUIT TREES...BANANAS, MANGO, LICHEE, LEMON, ORANGE,JACKFRUIT,SOUR SAP (CANCER FIGHTING AGENT),AVOCADOS, LONGBOY, LOGAN,MONTROY AND OTHERS! POSSIBLE 40 FT. CONTAINER OF POWER TOOLS, GARDENING EQUIPMENT, RIDING LAWN MOVER, MACHINES, ALL TRADES, AIR COMPRESSOR, TOOL BOXES AND MORE WELL OVER 70K IN VALUE FOR YOUR SECURITY AND WEATHER PROOFED ! PROPERTY HAS CHAIN-LINK FENCING AND HAS A 20 FT. REMOTE GATE. THE FARM HAS SECURITY GATE AT ENTRANCE. PROPERTY IS LOCATED ON A DEAD END/CULDESAC FOR TOTAL PRIVATE..ONLY TWO OTHER FARMERS. **Sale Conditions:** Subject To Repl. Property **Schools:** [Waipahu](#), [Waipahu](#), [Waipahu](#) * [Request Showing](#), [Photos](#), [History](#), [Maps](#), [Deed](#), [Watch List](#), [Tax Info](#)





Address	Price	Bd & Bth	Living / Avg.	Land Avg.	DOM
94-1100 Kunia Road 56	\$550,000 LH	0 & 0/0	0 \$inf	43,560 \$13	424

Address	Tax Maint. Ass.	Assessed Land	Assessed Building	Assessed Total	Ratio	Year & Remodeled
94-1100 Kunia Road 56	\$30 \$135 \$100	\$224,700	\$0	\$224,700	245%	& NA

[94-1100 Kunia Road 56](#) - MLS#: [202303901](#) - Original price was \$650,000 - SPECTALUAR VIEW OF CITY, COASTLINE, DIAMOND HEAD, AND OCEAN VIEW FROM YOUR LANI ! TURN-KEY OFF GRID ONE ACRE FARM. EQUIPED WITH SOLAR SYSTEM W/INVERTER, CONTROLER W/ 8 BATTERY & 12 SOLAR PANNELS ON A SHED W/COMPOSITION ROOF SECURED. ABOUT 5KV USAGE PER DAY. WATER ENCATCHMENT W/ REVERSE OSOMOSIS FILTERATION SYSTEM TO DRINK WATER. NEWER STRUCTURE 1200 SQ. FT. w/ LANI 250 SQ. FT. W/ THREE ROOMS FINISHED DOUBLE WALLED. KITCHEN IS NEW W/ CABINETS & GRANITE TOPS AND REF. USING ABOUT 460 KV. LANDING 202X20 TO ENJOY LOOKING OVER THE CITY LIGHTS AT NIGHT WHILE DINNING. NEW 250 SQ. FT. STRUCTURE FOR OFFICE/FARM WORKERS/RENTAL. FARM PRODUCES INCOME FROM FRUIT TREES...BANANAS, MANGO, LICHEE, LEMON, ORANGE,JACKFRUIT,SOUR SAP (CANCER FIGHTING AGENT),AVOCADOS, LONGBOY, LOGAN,MONTROY AND OTHERS! POSSIBLE 40 FT. CONTAINER OF POWER TOOLS, GARDENING EQUIPMENT, RIDING LAWN MOVER, MACHINES, ALL TRADES, AIR COMPRESSOR, TOOL BOXES AND MORE WELL OVER 70K IN VALUE FOR YOUR SECURITY AND WEATHER PROOFED ! PROPERTY HAS CHAIN-LINK FENCING AND HAS A 20 FT. REMOTE GATE. THE FARM HAS SECURITY GATE AT ENTRANCE. PROPERTY IS LOCATED ON A DEAD END/CULDESAC FOR TOTAL PRIVATE..ONLY TWO OTHER FARMERS. **Region:** Makakilo **Neighborhood:** Ag/preserve **Condition:** **Parking:** **Total Parking:** **View:** City, Coastline, Diamond Head, Mountain, Ocean, Sunrise, Sunset **Frontage:** **Pool:** **Zoning:** 51 - AG-1 Restricted Agricultur **Sale Conditions:** Subject To Repl. Property **Schools:** [Waipahu](#), [Waipahu](#), [Waipahu](#) * [Request Showing](#), [Photos](#), [History](#), [Maps](#), [Deed](#), [Watch List](#), [Tax Info](#)

DOM = Days on Market