

## **Na Pali Gardens 45-535 Luluku Road Unit J2, Kaneohe 96744 \* \$525,000**

Beds: **3**

MLS#: **202403444, FS**

Year Built: **1967**

Bath: **1/1**

Status: **Active Under Contract**

Remodeled:

Living Sq. Ft.: **843**

List Date & DOM: **02-12-2024 & 6**

Total Parking: **1**

Land Sq. Ft.: **125,453**

Condition: **Average**

[Assessed Value](#)

Lanai Sq. Ft.: **105**

Frontage:

Building: **\$423,200**

Sq. Ft. Other: **0**

Tax/Year: **\$139/2023**

Land: **\$51,300**

Total Sq. Ft. **948**

Neighborhood: **Hale Kou**

Total: **\$474,500**

Maint./Assoc. **\$816 / \$0**

[Flood Zone](#): **Zone X - Tool**

Stories / CPR: **One / No**

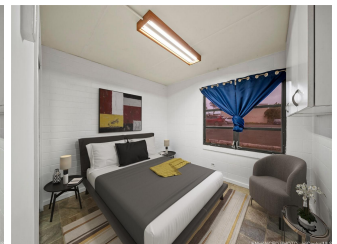
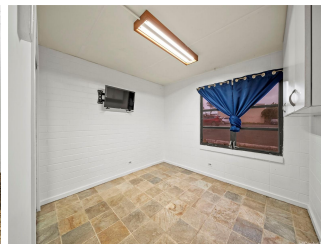
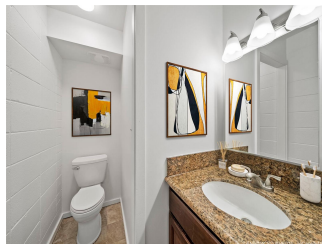
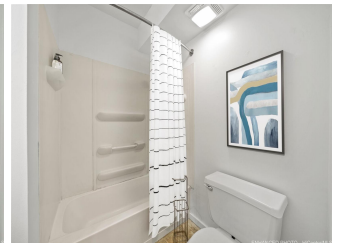
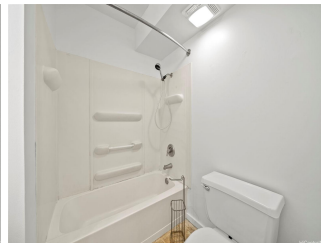
Parking: **Guest, Open - 1**

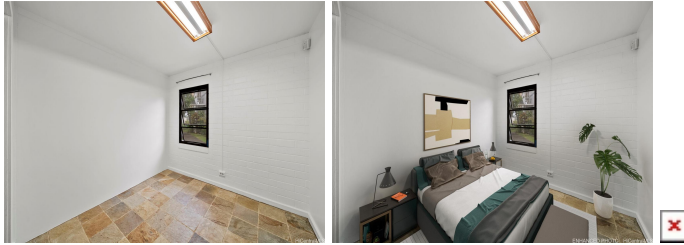
Frontage:

[Zoning](#): **42 - I-2 General Industrial Dis**

View: **Mountain**

**Public Remarks:** VA ASSUMABLE LOAN at 2.75%. Discover a hidden gem on the Windward side: a ground-floor corner unit in Na Pali Gardens. This rare opportunity stands out as one of the few units with an exceptionally large private fenced yard, alongside three bedrooms. Nestled in an area celebrated for its lush scenery, stunning Ko'olau Mountains, and captivating hiking trails, this home offers the perfect blend of tranquility and convenience. You're just moments away from dining, shopping, a gym, a military base, and major freeways. Enjoy access to a pool, playground, and basketball court. \*One or more photos have been enhanced\* **Sale Conditions:** None **Schools:** , , \* [Request Showing](#), [Photos](#), [History](#), [Maps](#), [Deed](#), [Watch List](#), [Tax Info](#)





Address	Price	Bd & Bth	Living / Avg.	Land   Avg.	DOM
<a href="#">45-535 Luluku Road J2</a>	<a href="#">\$525,000</a>	3 & 1/1	843   \$623	125,453   \$4	6

Address	Tax   Maint.   Ass.	Assessed Land	Assessed Building	Assessed Total	Ratio	Year & Remodeled
<a href="#">45-535 Luluku Road J2</a>	\$139   \$816   \$0	\$51,300	\$423,200	\$474,500	111%	1967 & NA

[45-535 Luluku Road J2](#) - MLS#: [202403444](#) - VA ASSUMABLE LOAN at 2.75%. Discover a hidden gem on the Windward side: a ground-floor corner unit in Na Pali Gardens. This rare opportunity stands out as one of the few units with an exceptionally large private fenced yard, alongside three bedrooms. Nestled in an area celebrated for its lush scenery, stunning Ko'olau Mountains, and captivating hiking trails, this home offers the perfect blend of tranquility and convenience. You're just moments away from dining, shopping, a gym, a military base, and major freeways. Enjoy access to a pool, playground, and basketball court. \*One or more photos have been enhanced\* **Region:** Kaneohe **Neighborhood:** Hale Kou **Condition:** Average **Parking:** Guest, Open - 1 **Total Parking:** 1 **View:** Mountain **Frontage:** **Pool:** **Zoning:** 42 - I-2 General Industrial Dis **Sale Conditions:** None **Schools:** , , \* [Request Showing](#), [Photos](#), [History](#), [Maps](#), [Deed](#), [Watch List](#), [Tax Info](#)

DOM = Days on Market