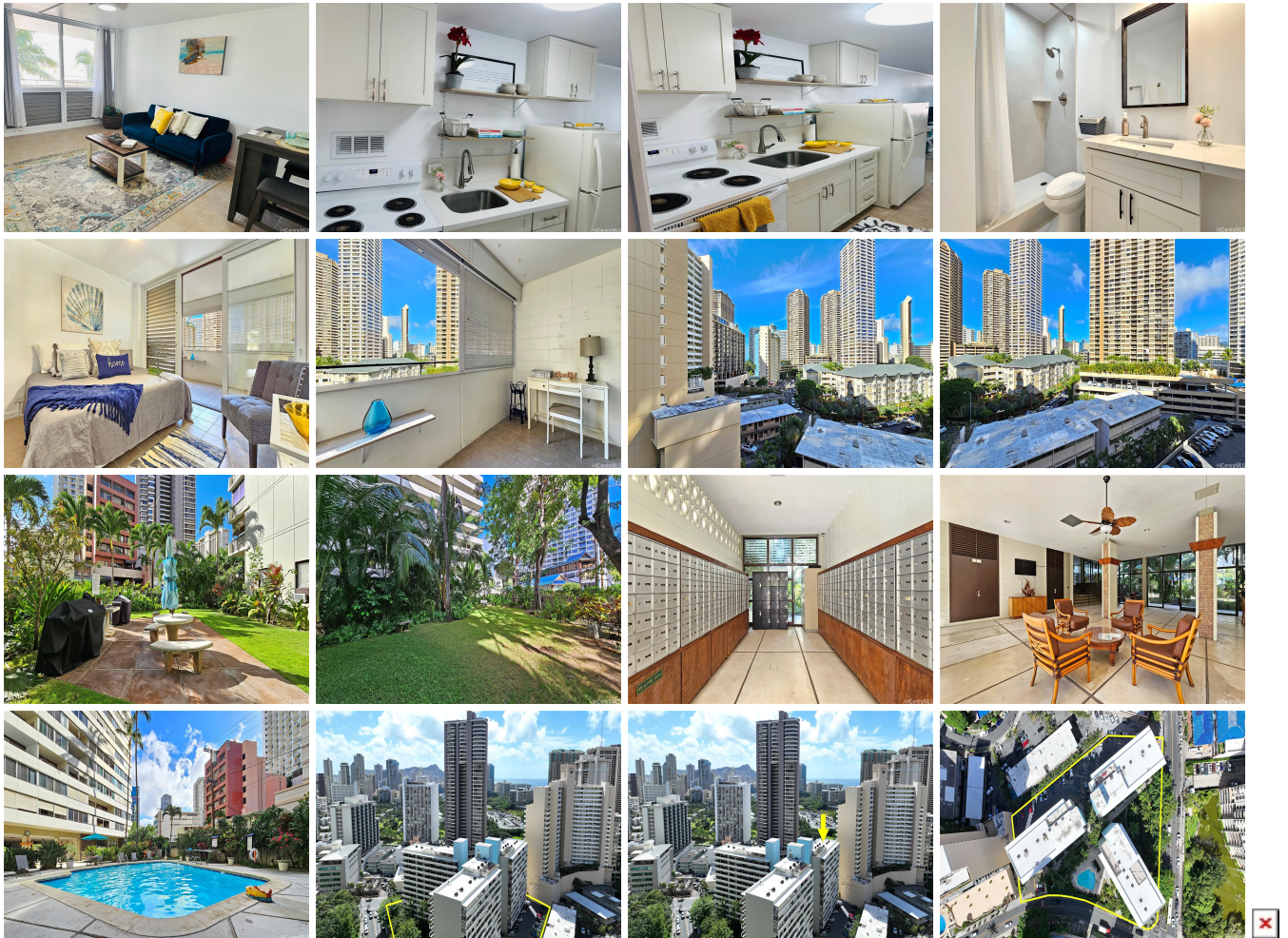


## Kalia 425 Ena Road Unit 805B, Honolulu 96815 \* \$110,000 \* Originally \$125,000

Beds: <b>1</b>	MLS#: <b>202404872, LH</b>	Year Built: <b>1958</b>
Bath: <b>1/0</b>	Status: <b>Active Under Contract</b>	Remodeled:
Living Sq. Ft.: <b>500</b>	List Date & DOM: <b>03-06-2024 &amp; 65</b>	Total Parking: <b>0</b>
Land Sq. Ft.: <b>0</b>	Condition: <b>Excellent</b>	<a href="#">Assessed Value</a>
Lanai Sq. Ft.: <b>88</b>	Frontage:	Building: <b>\$236,600</b>
Sq. Ft. Other: <b>0</b>	Tax/Year: <b>\$87/2024</b>	Land: <b>\$97,900</b>
Total Sq. Ft. <b>588</b>	Neighborhood: <b>Waikiki</b>	Total: <b>\$334,500</b>
Maint./Assoc. <b>\$814 / \$0</b>	<a href="#">Flood Zone</a> : <b>Zone AE - Tool</b>	Stories / CPR: <b>One / No</b>
Parking: <b>None</b>	Frontage:	
<a href="#">Zoning</a> : <b>X2 - Apartment Precinct</b>	View: <b>City</b>	

**Public Remarks:** SELLER SAYS SELL! Bring in an OFFER!!! Price Adjustment to this NEWLY, RENOVATED 1 Bedroom, 1 Bath HIGH FLOOR Unit at the Kalia, which you can just move right in! The Kalia is a LEASEHOLD CO-OP with a lease that expires in 2048 and its location on Ena Rd. is in such a tranquil setting off the hustle and bustle of Waikiki. Close to the Food Pantry, The Aloha Kitchen, Kuru-Kuru, and other eateries within a short distance. Unit is ready for you to call it home as it comes Fully Furnished with Fresh Paint, New Kitchen Quartz Countertops & Cabinets, a New Bathroom and scrapped ceilings. Seller recently installed a new kitchen cabinet above the stove for added storage. Enjoy your days in this quaint and quiet community with great neighbors! Call your favorite Realtor and make an appointment. Parking may be available to rent but please check with Resident Manager. **Sale Conditions:** None **Schools:** , \* [Request Showing](#), [Photos](#), [History](#), [Maps](#), [Deed](#), [Watch List](#), [Tax Info](#)



Address	Price	Bd & Bth	Living / Avg.	Land   Avg.	DOM
<a href="#">425 Ena Road 805B</a>	<b>\$110,000 LH</b>	1 & 1/0	500   \$220	0   \$inf	65

Address	Tax   Maint.   Ass.	Assessed Land	Assessed Building	Assessed Total	Ratio	Year & Remodeled
<a href="#">425 Ena Road 805B</a>	\$87   \$814   \$0	\$97,900	\$236,600	\$334,500	33%	1958 & NA

[425 Ena Road 805B](#) - MLS#: [202404872](#) - Original price was \$125,000 - SELLER SAYS SELL! Bring in an OFFER!!! Price Adjustment to this NEWLY, RENOVATED 1 Bedroom, 1 Bath HIGH FLOOR Unit at the Kalia, which you can just move right in! The Kalia is a LEASEHOLD CO-OP with a lease that expires in 2048 and its location on Ena Rd. is in such a tranquil setting off the hustle and bustle of Waikiki. Close to the Food Pantry, The Aloha Kitchen, Kuru-Kuru, and other eateries within a short distance. Unit is ready for you to call it home as it comes Fully Furnished with Fresh Paint, New Kitchen Quartz Countertops & Cabinets, a New Bathroom and scrapped ceilings. Seller recently installed a new kitchen cabinet above the stove for added storage. Enjoy your days in this quaint and quiet community with great neighbors! Call your favorite Realtor and make an appointment. Parking may be available to rent but please check with Resident Manager. **Region:** Metro **Neighborhood:** Waikiki **Condition:** Excellent **Parking:** None **Total Parking:** 0 **View:** City **Frontage:** **Pool:** **Zoning:** X2 - Apartment Precinct **Sale Conditions:** None **Schools:** , , \* [Request Showing](#), [Photos](#), [History](#), [Maps](#), [Deed](#), [Watch List](#), [Tax Info](#)

DOM = Days on Market