

Horizon View Tower 3130 Ala Ilima Street Unit 26D, Honolulu 96818 * \$560,000 * Originally

\$568,000

Beds: **2**

MLS#: **202406301, FS**

Year Built: **1981**

Bath: **2/0**

Status: **Active Under Contract**

Remodeled: **2015**

Living Sq. Ft.: **904**

List Date & DOM: **03-13-2024 & 43**

Total Parking: **1**

Land Sq. Ft.: **0**

Condition: **Excellent, Above Average**

[Assessed Value](#)

Lanai Sq. Ft.: **142**

Frontage:

Building: **\$511,600**

Sq. Ft. Other: **0**

Tax/Year: **\$158/2024**

Land: **\$74,200**

Total Sq. Ft. **1,046**

Neighborhood: **Salt Lake**

Total: **\$585,800**

Maint./Assoc. **\$777 / \$0**

[Flood Zone](#): **Zone X - Tool**

Stories / CPR: / **No**

Parking: **Assigned, Covered - 1, Guest, Secured Entry**

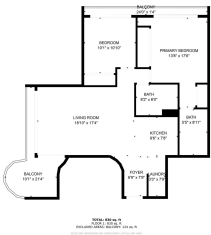
Frontage:

[Zoning](#): **12 - A-2 Medium Density Apartme**

View: **City, Golf Course, Ocean**

Public Remarks: Discover 26D, a Horizon View Tower high-floor gem boasting unparalleled views stretching from Diamond Head to Pearl Harbor. This spacious condo is a must-see, offering captivating vistas from every room and charming balconies that enhance the ambiance. Inside, you'll find a modern open kitchen with granite countertops, under cabinet lighting, laminate flooring, and popcorn ceilings removed, creating a contemporary feel. The home was upgraded with new electricity, lighting, a full-sized washer/dryer, and refrigerator. With ample natural light and refreshing breezes, this well-maintained unit remains cool and comfortable without needing AC. Practical amenities include fire sprinklers, easy access to freeways and shopping, and a modest maintenance fee powered by solar panels. Security is assured with gated access, and one covered assigned parking spot. Assumable VA loan fixed at 2.75% for qualified applicants. Minutes away from Tripler Hospital and Daniel K. Inouye International Airport. Don't miss this opportunity to experience island living at its finest. Seeing is believing!

Sale Conditions: None **Schools:** , , * [Request Showing](#), [Photos](#), [History](#), [Maps](#), [Deed](#), [Watch List](#), [Tax Info](#)



Address	Price	Bd & Bth	Living / Avg.	Land Avg.	DOM
3130 Ala Ilima Street 26D	\$560,000	2 & 2/0	904 \$619	0 \$inf	43

Address	Tax Maint. Ass.	Assessed Land	Assessed Building	Assessed Total	Ratio	Year & Remodeled
3130 Ala Ilima Street 26D	\$158 \$777 \$0	\$74,200	\$511,600	\$585,800	96%	1981 & 2015

[3130 Ala Ilima Street 26D](#) - MLS#: [202406301](#) - Original price was \$568,000 - Discover 26D, a Horizon View Tower high-floor gem boasting unparalleled views stretching from Diamond Head to Pearl Harbor. This spacious condo is a must-see, offering captivating vistas from every room and charming balconies that enhance the ambiance. Inside, you'll find a modern open kitchen with granite countertops, under cabinet lighting, laminate flooring, and popcorn ceilings removed, creating a contemporary feel. The home was upgraded with new electricity, lighting, a full-sized washer/dryer, and refrigerator. With ample natural light and refreshing breezes, this well-maintained unit remains cool and comfortable without needing AC. Practical amenities include fire sprinklers, easy access to freeways and shopping, and a modest maintenance fee powered by solar panels. Security is assured with gated access, and one covered assigned parking spot. Assumable VA loan fixed at 2.75% for qualified applicants. Minutes away from Tripler Hospital and Daniel K. Inouye International Airport. Don't miss this opportunity to experience island living at its finest. Seeing is believing! **Region:** Metro **Neighborhood:** Salt Lake **Condition:** Excellent, Above Average **Parking:** Assigned, Covered - 1, Guest, Secured Entry **Total Parking:** 1 **View:** City, Golf Course, Ocean **Frontage:** **Pool:** **Zoning:** 12 - A-2 Medium Density Apartme **Sale Conditions:** None **Schools:** , , * [Request Showing](#), [Photos](#), [History](#), [Maps](#), [Deed](#), [Watch List](#), [Tax Info](#)

DOM = Days on Market