

Colony Marina 6236 Keokea Place Unit D104, Honolulu 96825 * \$1,395,000

Beds: **4**

MLS#: **202406463, FS**

Year Built: **1969**

Bath: **3/0**

Status: **Active Under Contract**

Remodeled:

Living Sq. Ft.: **1,914**

List Date & DOM: **05-04-2024 & 22**

Total Parking: **2**

Land Sq. Ft.: **92,304**

Condition: **Excellent**

[Assessed Value](#)

Lanai Sq. Ft.: **264**

Frontage: **Marina**

Building: **\$429,700**

Sq. Ft. Other: **0**

Tax/Year: **\$327/2023**

Land: **\$791,400**

Total Sq. Ft. **2,178**

Neighborhood: **West Marina**

Total: **\$1,221,100**

Maint./Assoc. **\$1,025 / \$0**

[Flood Zone](#): **Zone AE - Tool**

Stories / CPR: **Two / No**

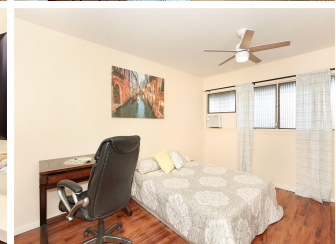
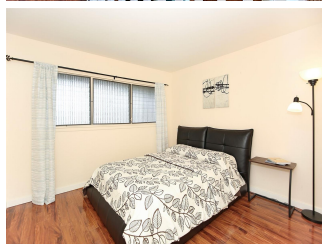
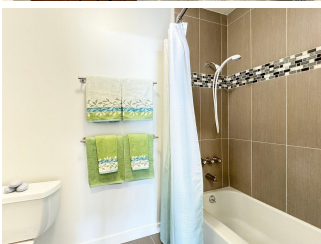
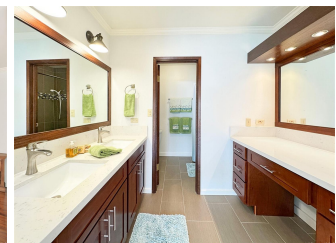
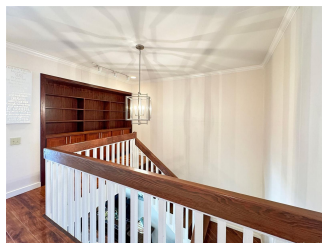
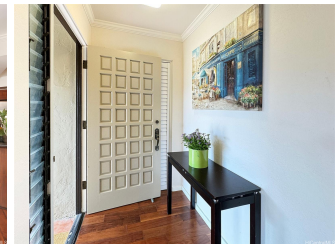
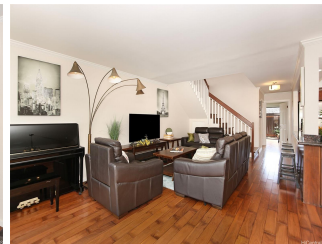
Parking: **Carport, Covered - 2**

Frontage: **Marina**

[Zoning](#): **11 - A-1 Low Density Apartment**

View: **Garden, Marina/Canal, Mountain**

Public Remarks: Larger than many single-family homes, this marinafront 4/3 townhouse of over 1,900 interior sq. ft. has a rare bedroom and full bath on the ground level, open to a private fenced garden. The living and dining areas overlook the water and your own boat dock, newly rebuilt. Upgrades include floors, bathrooms, and an open-plan kitchen with plenty of storage. On the private second floor, you'll find the large primary suite with gorgeous mountain and marina views, plus two more bedrooms and a bath. Colony Marina is a beautiful complex with a convenient pool and two assigned covered parking stalls near the townhouse. Come live the marina lifestyle today! **Sale Conditions:** None **Schools:** [Hahaione](#), [Niu Valley](#), [Kaiser](#) * [Request Showing](#), [Photos](#), [History](#), [Maps](#), [Deed](#), [Watch List](#), [Tax Info](#)





Address	Price	Bd & Bth	Living / Avg.	Land Avg.	DOM
6236 Keokea Place D104	\$1,395,000	4 & 3/0	1,914 \$729	92,304 \$15	22

Address	Tax Maint. Ass.	Assessed Land	Assessed Building	Assessed Total	Ratio	Year & Remodeled
6236 Keokea Place D104	\$327 \$1,025 \$0	\$791,400	\$429,700	\$1,221,100	114%	1969 & NA

<p>6236 Keokea Place D104 - MLS#: 202406463 - Larger than many single-family homes, this marinafront 4/3 townhouse of over 1,900 interior sq. ft. has a rare bedroom and full bath on the ground level, open to a private fenced garden. The living and dining areas overlook the water and your own boat dock, newly rebuilt. Upgrades include floors, bathrooms, and an open-plan kitchen with plenty of storage. On the private second floor, you'll find the large primary suite with gorgeous mountain and marina views, plus two more bedrooms and a bath. Colony Marina is a beautiful complex with a convenient pool and two assigned covered parking stalls near the townhouse. Come live the marina lifestyle today! Region: Hawaii Kai Neighborhood: West Marina Condition: Excellent Parking: Carport, Covered - 2 Total Parking: 2 View: Garden, Marina/Canal, Mountain Frontage: Marina Pool: Zoning: 11 - A-1 Low Density Apartment Sale Conditions: None Schools: Hahaione, Niu Valley, Kaiser * Request Showing, Photos, History, Maps, Deed, Watch List, Tax Info</p>						
--	--	--	--	--	--	--

DOM = Days on Market