

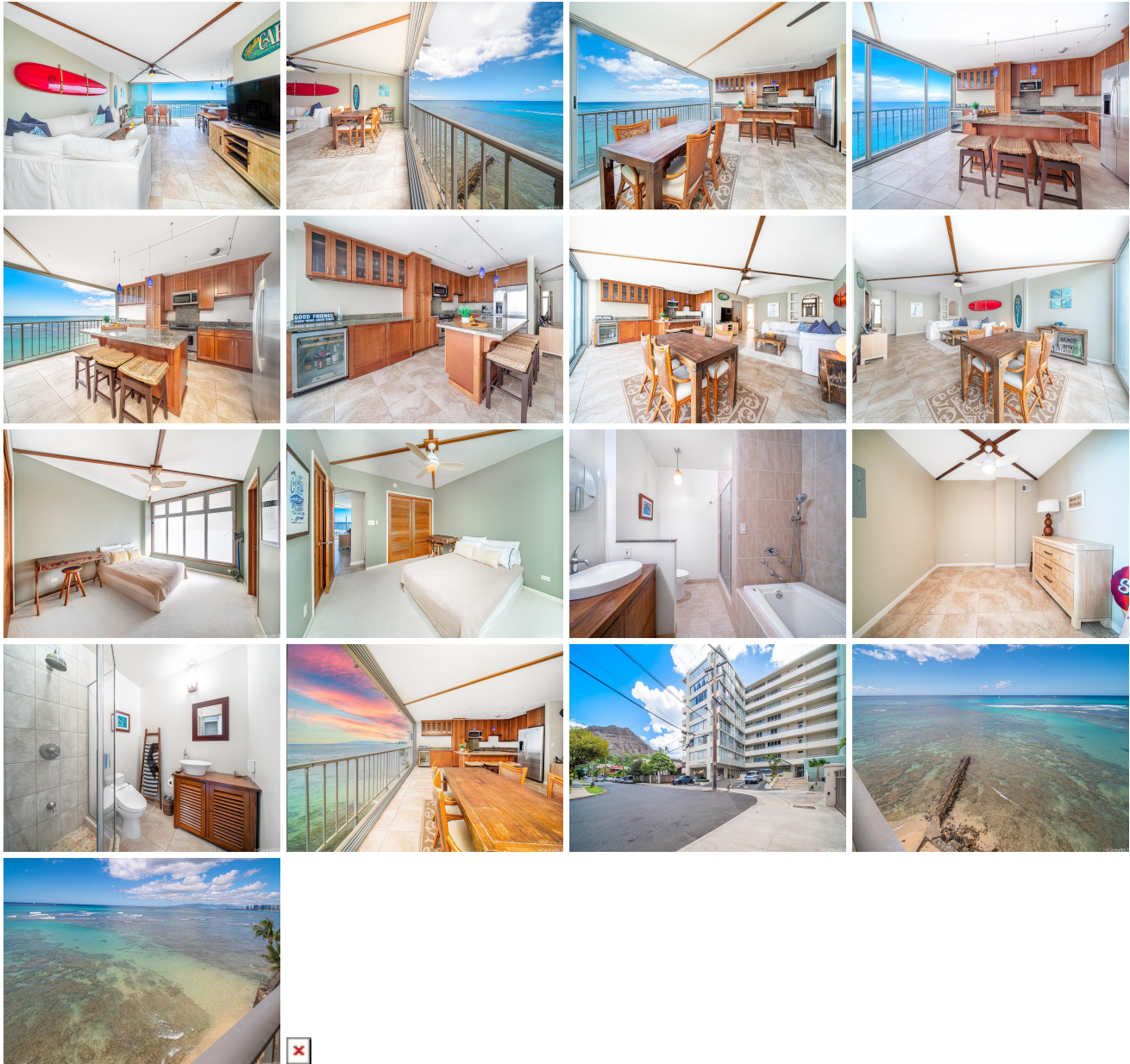
Kainalu 2801 Coconut Avenue Unit 4B, Honolulu 96815 * \$2,270,000

Beds: 2	MLS#: 202406551 , FS	Year Built: 1958
Bath: 2/0	Status: Active	Remodeled:
Living Sq. Ft.: 1,162	List Date & DOM: 03-18-2024 & 65	Total Parking: 1
Land Sq. Ft.: 0	Condition: Excellent, Above Average	Assessed Value
Lanai Sq. Ft.: 0	Frontage: Ocean	Building: \$1,458,600
Sq. Ft. Other: 0	Tax/Year: \$470/2023	Land: \$152,900
Total Sq. Ft. 1,162	Neighborhood: Diamond Head	Total: \$1,611,500
Maint./Assoc. \$1,885 / \$0	Flood Zone : Zone X - Tool	Stories / CPR: 8-14 / No
Parking: Assigned, Covered - 1, Secured Entry	Frontage: Ocean	

[Zoning](#): **12 - A-2 Medium Density Apartme**

View: **City, Coastline, Ocean, Sunset**

Public Remarks: Situated on the private end of Waikiki, just below Diamond Head, this 2 bedroom, 2 bathroom, 1 parking unit at Kainalu features stunning ocean views. Relax and entertain in your spacious living room. Washer/dryer in unit. Secured parking stall. This Co-op unit awaits your personal touches. Near Diamond Head lookout, Kapiolani Park, and world famous Waikiki Beach. Swim, surf, and enjoy the sandy beaches right in front of your building. This is the Gold Coast lifestyle of Oahu. Come enjoy luxurious living! **Sale Conditions:** None **Schools:** , , * [Request Showing](#), [Photos](#), [History](#), [Maps](#), [Deed](#), [Watch List](#), [Tax Info](#)



Address	Price	Bd & Bth	Living / Avg.	Land Avg.	DOM
---------	-------	----------	---------------	-------------	-----

2801 Coconut Avenue 4B	\$2,270,000	2 & 2/0	1,162 \$1,954	0 \$inf	65
--	-----------------------------	---------	-----------------	-----------	----

Address	Tax Maint. Ass.	Assessed Land	Assessed Building	Assessed Total	Ratio	Year & Remodeled
2801 Coconut Avenue 4B	\$470 \$1,885 \$0	\$152,900	\$1,458,600	\$1,611,500	141%	1958 & NA

[2801 Coconut Avenue 4B](#) - MLS#: [202406551](#) - Situated on the private end of Waikiki, just below Diamond Head, this 2 bedroom, 2 bathroom, 1 parking unit at Kainalu features stunning ocean views. Relax and entertain in your spacious living room. Washer/dryer in unit. Secured parking stall. This Co-op unit awaits your personal touches. Near Diamond Head lookout, Kapiolani Park, and world famous Waikiki Beach. Swim, surf, and enjoy the sandy beaches right in front of your building. This is the Gold Coast lifestyle of Oahu. Come enjoy luxurious living! **Region:** Diamond Head **Neighborhood:** Diamond Head **Condition:** Excellent, Above Average **Parking:** Assigned, Covered - 1, Secured Entry **Total Parking:** 1 **View:** City, Coastline, Ocean, Sunset **Frontage:** Ocean **Pool:** **Zoning:** 12 - A-2 Medium Density Apartme **Sale Conditions:** None **Schools:** , , * [Request Showing](#), [Photos](#), [History](#), [Maps](#), [Deed](#), [Watch List](#), [Tax Info](#)

DOM = Days on Market