

Kuilei Place 2599 Kapiolani Boulevard Unit 2703, Honolulu 96826 * Kuilei Place *

\$1,123,500

Beds: **3**

MLS#: **202407104, FS**

Year Built: **2026**

Bath: **2/0**

Status: **Active Under Contract**

Remodeled:

Living Sq. Ft.: **1,075**

List Date & DOM: **04-03-2024 & 11**

Total Parking: **2**

Land Sq. Ft.: **0**

Condition: **Excellent**

[Assessed Value](#)

Lanai Sq. Ft.: **0**

Frontage:

Building: **\$0**

Sq. Ft. Other: **0**

Tax/Year: **\$0/2023**

Land: **\$0**

Total Sq. Ft. **1,075**

Neighborhood: **Kapiolani**

Total: **\$0**

Maint./Assoc. **\$731 / \$0**

[Flood Zone](#): **Zone AE - Tool**

Stories / CPR: **21+ / No**

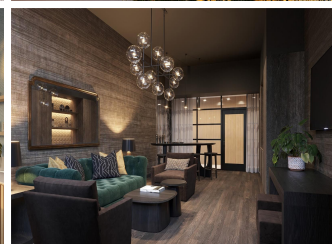
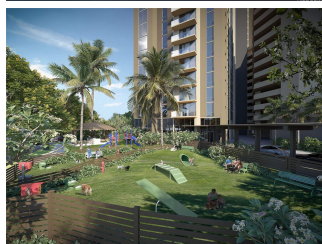
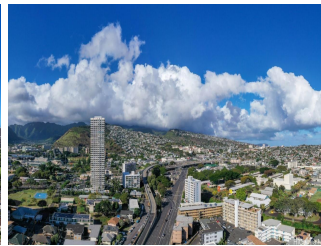
Parking: **None, Covered - 2, Garage, Guest, Secured Entry**

Frontage:

[Zoning](#): **12 - A-2 Medium Density Apartme**

View: **City, Diamond Head, Garden, Golf Course, Marina/Canal, Mountain, Ocean, Sunrise**

Public Remarks: Experience elevated island living at Kuilei Place. This new development offers a sustainable lifestyle, with stunning views and thoughtful design. Come inside this two bedroom residence to discover awe-inspiring interior details. The entertainer's kitchen with center island flows directly into the living area that is embraced with natural lighting from the floor-to-ceiling windows. The primary bathroom boasts a double vanity sink, a spacious shower, and an impressive closet for all your storage needs. Indulge in resort-style amenities, including a pool, two fitness centers, and 11 cabanas perfect for hosting memorable BBQ gatherings. The ground level offers five club rooms for relaxation and socializing, while the penthouse features private dining rooms and a karaoke lounge. This pet-friendly community goes above and beyond with playgrounds and storage options. The high-end Bosch appliances and two interior finishing packages add a touch of elegance to this exceptional home. Situated in a prime location, this neighborhood offers convenient access to shopping centers, schools, outdoor activities, and entertainment, making it an unparalleled place to call home. **Sale Conditions:** None **Schools:** , , * [Request Showing](#), [Photos](#), [History](#), [Maps](#), [Deed](#), [Watch List](#), [Tax Info](#)





Address	Price	Bd & Bth	Living / Avg.	Land Avg.	Lanai	Occ.	FL	DOM
2599 Kapiolani Boulevard 2703	\$1,123,500	3 & 2/0	1,075 \$1,045	0 \$inf	0	0%	27	11

Address	Tax Maint. Ass.	Assessed Land	Assessed Building	Assessed Total	Ratio	Year & Remodeled
2599 Kapiolani Boulevard 2703	\$0 \$731 \$0	\$0	\$0	\$0	inf%	2026 & NA

[2599 Kapiolani Boulevard 2703](#) - MLS#: [202407104](#) - Experience elevated island living at Kuilei Place. This new development offers a sustainable lifestyle, with stunning views and thoughtful design. Come inside this two bedroom residence to discover awe-inspiring interior details. The entertainer's kitchen with center island flows directly into the living area that is embraced with natural lighting from the floor-to-ceiling windows. The primary bathroom boasts a double vanity sink, a spacious shower, and an impressive closet for all your storage needs. Indulge in resort-style amenities, including a pool, two fitness centers, and 11 cabanas perfect for hosting memorable BBQ gatherings. The ground level offers five club rooms for relaxation and socializing, while the penthouse features private dining rooms and a karaoke lounge. This pet-friendly community goes above and beyond with playgrounds and storage options. The high-end Bosch appliances and two interior finishing packages add a touch of elegance to this exceptional home. Situated in a prime location, this neighborhood offers convenient access to shopping centers, schools, outdoor activities, and entertainment, making it an unparalleled place to call home. **Region:** Metro **Neighborhood:** Kapiolani **Condition:** Excellent **Parking:** None, Covered - 2, Garage, Guest, Secured Entry **Total Parking:** 2 **View:** City, Diamond Head, Garden, Golf Course, Marina/Canal, Mountain, Ocean, Sunrise **Frontage:** **Pool:** **Zoning:** 12 - A-2 Medium Density Apartme **Sale Conditions:** None **Schools:** , , * [Request Showing](#), [Photos](#), [History](#), [Maps](#), [Deed](#), [Watch List](#), [Tax Info](#)

DOM = Days on Market, Occ. = Occupancy, FL = Floor Number