

Kapiolani Manor 1655 Makaloa Street Unit 2416, Honolulu 96814 * \$355,000

Beds: **1**

MLS#: **202408649, FS**

Year Built: **1970**

Bath: **1/0**

Status: **Active Under Contract**

Remodeled:

Living Sq. Ft.: **484**

List Date & DOM: **04-22-2024 & 20**

Total Parking: **1**

Land Sq. Ft.: **56,105**

Condition: **Average**

[Assessed Value](#)

Lanai Sq. Ft.: **71**

Frontage: **Other**

Building: **\$308,600**

Sq. Ft. Other: **0**

Tax/Year: **\$99/2024**

Land: **\$30,600**

Total Sq. Ft. **555**

Neighborhood: **Holiday Mart**

Total: **\$339,200**

Maint./Assoc. **\$598 / \$0**

[Flood Zone](#): **Zone X - Tool**

Stories / CPR: **21+ / No**

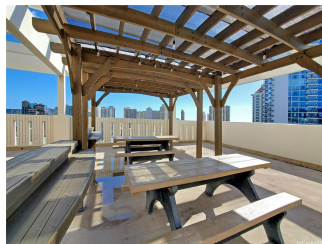
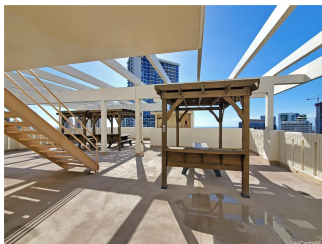
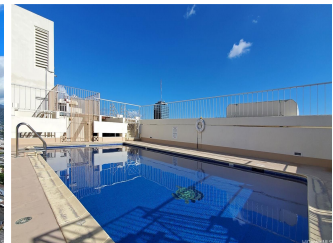
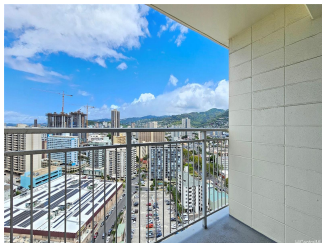
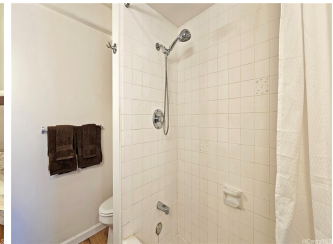
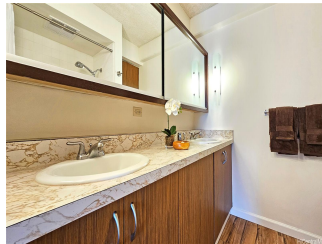
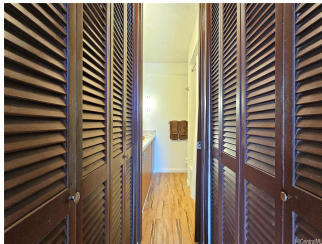
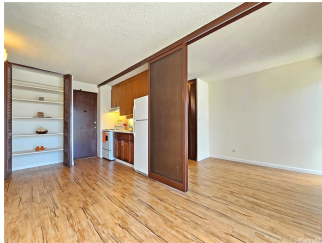
Parking: **Assigned, Covered - 1, Garage, Secured Entry**

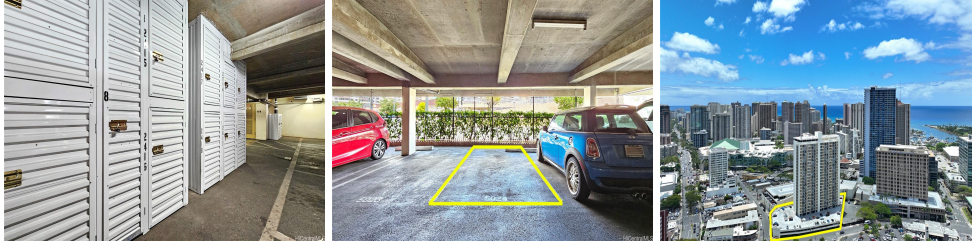
Frontage: **Other**

[Zoning](#): **32 - B-2 Community Business Dis**

View: **City, Mountain**

Public Remarks: Say good bye to long driving! This high-floor 1-bedroom unit in popular Kapiolani Manor offers convenient town living, close to downtown Honolulu, Ala Moana Shopping Center, grocery stores, gym, beaches, many restaurants and bus lines. Sunny and breezy unit has a large lanai to enjoy fresh air in the morning and sparkling city lights at night. The unit comes with one covered assigned parking stall and a storage locker both on the ground floor. The condo has a roof top swimming pool with amazing view of ocean, mountains, and Diamond Head, also offers community laundry room on each floor. Maintenance fee includes electricity, cable TV, hot water, water and sewer. Freshly painted and ready to move-in. **Sale Conditions:** None **Schools:** [Kaahumanu](#), [Washington](#), [Mckinley](#) * [Request Showing](#), [Photos](#), [History](#), [Maps](#), [Deed](#), [Watch List](#), [Tax Info](#)





Address	Price	Bd & Bth	Living / Avg.	Land Avg.	DOM
1655 Makaloa Street 2416	\$355,000	1 & 1/0	484 \$733	56,105 \$6	20

Address	Tax Maint. Ass.	Assessed Land	Assessed Building	Assessed Total	Ratio	Year & Remodeled
1655 Makaloa Street 2416	\$99 \$598 \$0	\$30,600	\$308,600	\$339,200	105%	1970 & NA

[1655 Makaloa Street 2416](#) - MLS#: [202408649](#) - Say good bye to long driving! This high-floor 1-bedroom unit in popular Kapiolani Manor offers convenient town living, close to downtown Honolulu, Ala Moana Shopping Center, grocery stores, gym, beaches, many restaurants and bus lines. Sunny and breezy unit has a large lanai to enjoy fresh air in the morning and sparkling city lights at night. The unit comes with one covered assigned parking stall and a storage locker both on the ground floor. The condo has a roof top swimming pool with amazing view of ocean, mountains, and Diamond Head, also offers community laundry room on each floor. Maintenance fee includes electricity, cable TV, hot water, water and sewer. Freshly painted and ready to move-in. **Region:** Metro **Neighborhood:** Holiday Mart **Condition:** Average **Parking:** Assigned, Covered - 1, Garage, Secured Entry **Total Parking:** 1 **View:** City, Mountain **Frontage:** Other **Pool:** **Zoning:** 32 - B-2 Community Business Dis **Sale Conditions:** None **Schools:** [Kaahumanu](#), [Washington](#), [Mckinley](#) * [Request Showing](#), [Photos](#), [History](#), [Maps](#), [Deed](#), [Watch List](#), [Tax Info](#)

DOM = Days on Market