

Waipuna 469 Ena Road Unit 3301, Honolulu 96815 * Waipuna * \$925,000

Beds: **3**

MLS#: **202409044, FS**

Year Built: **1971**

Bath: **3/0**

Status: **Active Under Contract**

Remodeled:

Living Sq. Ft.: **1,249**

List Date & DOM: **05-01-2024 & 7**

Total Parking: **1**

Land Sq. Ft.: **0**

Condition: **Excellent**

[Assessed Value](#)

Lanai Sq. Ft.: **150**

Frontage:

Building: **\$814,400**

Sq. Ft. Other: **0**

Tax/Year: **\$233/2024**

Land: **\$116,700**

Total Sq. Ft. **1,399**

Neighborhood: **Waikiki**

Total: **\$931,100**

Maint./Assoc. **\$1,024 / \$0**

[Flood Zone](#): **Zone AE - Tool**

Stories / CPR: / **No**

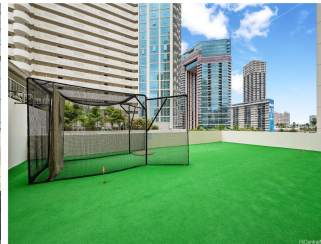
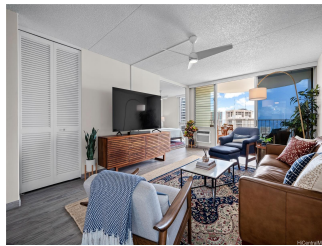
Parking: **Assigned, Covered - 1, Guest**

Frontage:

[Zoning](#): **X2 - Apartment Precinct**

View: **City, Diamond Head, Mountain, Ocean**

Public Remarks: Immaculate, high floor, corner unit! This 3-bdrm 3-bath unit in Waipuna has been completely renovated. Enjoy cool cross breezes and plenty of natural light with sweeping ocean and Diamond Head views from the large, usable lanai. Well-managed building with 24-hour security, guest parking and pet friendly. Conveniently located near Food Pantry, post office, shopping, dining and the excitement of Waikiki. A must see! **Sale Conditions:** None **Schools:** , , * [Request Showing, Photos, History, Maps, Deed, Watch List, Tax Info](#)





| Address | Price | Bd & Bth | Living / Avg. | Land Avg. | Lanai | Occ. | FL | DOM |
|-----------------------------------|---------------------------|----------|---------------|-------------|-------|------|----|-----|
| 469 Ena Road 3301 | \$925,000 | 3 & 3/0 | 1,249 \$741 | 0 \$inf | 150 | 50% | 33 | 7 |

| Address | Tax Maint. Ass. | Assessed Land | Assessed Building | Assessed Total | Ratio | Year & Remodeled |
|-----------------------------------|-----------------------|---------------|-------------------|----------------|-------|------------------|
| 469 Ena Road 3301 | \$233 \$1,024 \$0 | \$116,700 | \$814,400 | \$931,100 | 99% | 1971 & NA |

[469 Ena Road 3301](#) - MLS#: [202409044](#) - Immaculate, high floor, corner unit! This 3-bdrm 3-bath unit in Waipuna has been completely renovated. Enjoy cool cross breezes and plenty of natural light with sweeping ocean and Diamond Head views from the large, usable lanai. Well-managed building with 24-hour security, guest parking and pet friendly. Conveniently located near Food Pantry, post office, shopping, dining and the excitement of Waikiki. A must see! **Region:** Metro **Neighborhood:** Waikiki **Condition:** Excellent **Parking:** Assigned, Covered - 1, Guest **Total Parking:** 1 **View:** City, Diamond Head, Mountain, Ocean **Frontage:** **Pool:** **Zoning:** X2 - Apartment Precinct **Sale Conditions:** None **Schools:** , , * [Request Showing](#), [Photos](#), [History](#), [Maps](#), [Deed](#), [Watch List](#), [Tax Info](#)

DOM = Days on Market, Occ. = Occupancy, FL = Floor Number