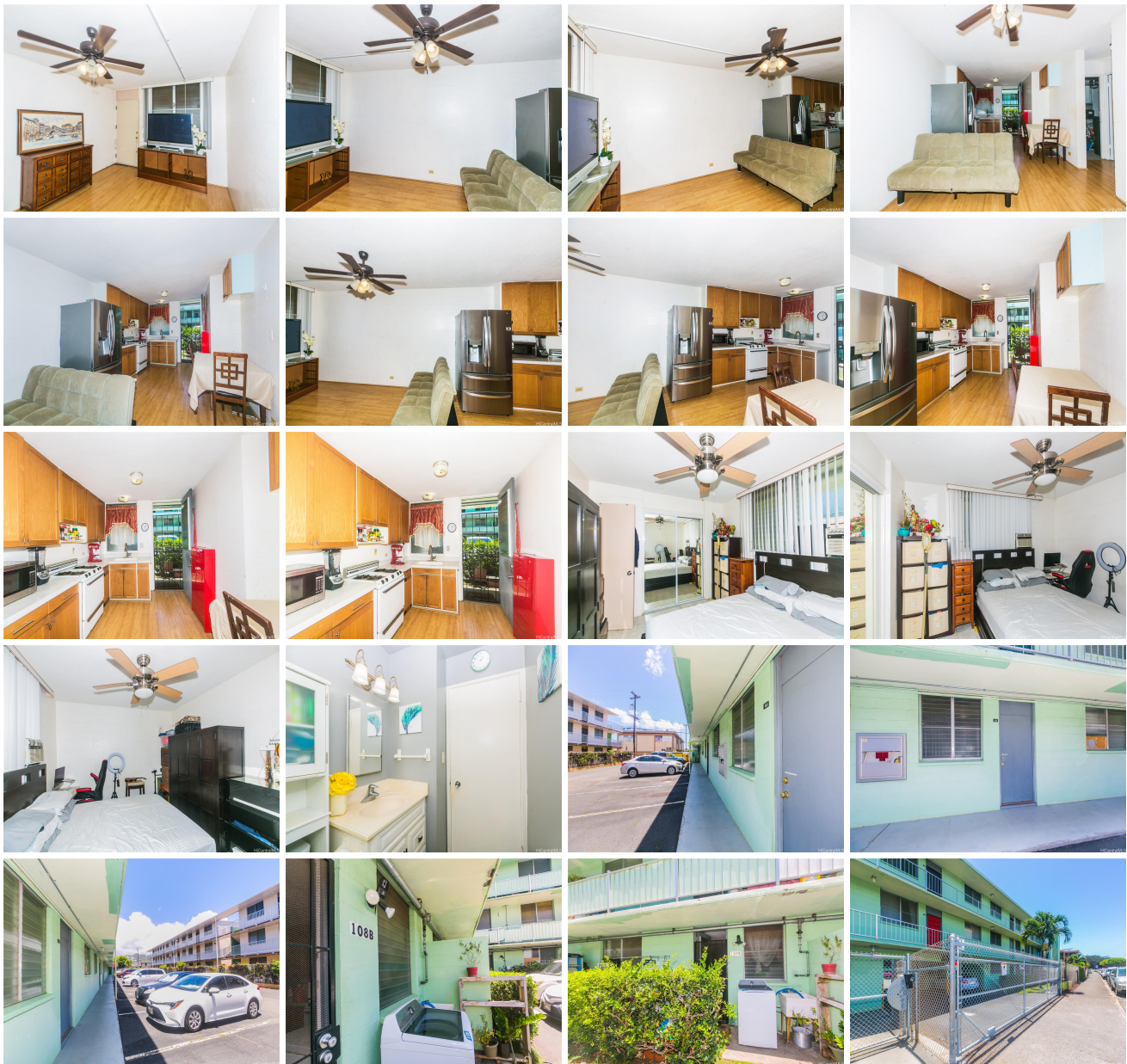


Holiday Apts 775 Mcneill Street Unit 108B, Honolulu 96817 * Holiday Apts * \$425,000

Beds: 2	MLS#: 202410887, FS	Year Built: 1965
Bath: 1/0	Status: Active	Remodeled:
Living Sq. Ft.: 648	List Date & DOM: 05-08-2024 & 25	Total Parking: 1
Land Sq. Ft.: 53,971	Condition: Average	Assessed Value
Lanai Sq. Ft.: 0	Frontage:	Building: \$278,600
Sq. Ft. Other: 0	Tax/Year: \$80/2024	Land: \$96,500
Total Sq. Ft. 648	Neighborhood: Kalihi Area	Total: \$375,100
Maint./Assoc. \$450 / \$0	Flood Zone : Zone X - Tool	Stories / CPR: / No
Parking: Assigned, Open - 1	Frontage:	
Zoning : 11 - A-1 Low Density Apartment	View: None	

Public Remarks: OPEN HOUSE ON 5/26/24 CANCELLED! Welcome home to this ground floor unit in the Holiday Apartments building. This home features 2 bedrooms, 1 bath and 1 assigned parking with secured gate entry. Each bedrooms are equipped with Window-Type AC Unit and portable AC unit. The flooring throughout is laminate and kitchen has been updated. The home is in close proximity to parks, schools, grocery stores, eateries and bust stops. **Sale Conditions:** None, Subject To Repl. Property **Schools:** , , * [Request Showing](#), [Photos](#), [History](#), [Maps](#), [Deed](#), [Watch List](#), [Tax Info](#)



Address	Price	Bd & Bth	Living / Avg.	Land Avg.	Lanai	Occ.	FL	DOM
775 Mcneill Street 108B	\$425,000	2 & 1/0	648 \$656	53,971 \$8	0	38%	1	25

Address	Tax Maint. Ass.	Assessed Land	Assessed Building	Assessed Total	Ratio	Year & Remodeled
775 Mcneill Street 108B	\$80 \$450 \$0	\$96,500	\$278,600	\$375,100	113%	1965 & NA

[775 Mcneill Street 108B](#) - MLS#: [202410887](#) - OPEN HOUSE ON 5/26/24 CANCELLED! Welcome home to this ground floor unit in the Holiday Apartments building. This home features 2 bedrooms, 1 bath and 1 assigned parking with secured gate entry. Each bedrooms are equipped with Window-Type AC Unit and portable AC unit. The flooring throughout is laminate and kitchen has been updated. The home is in close proximity to parks, schools, grocery stores, eateries and bust stops. **Region:** Metro **Neighborhood:** Kalihi Area **Condition:** Average **Parking:** Assigned, Open - 1 **Total Parking:** 1 **View:** None **Frontage:** **Pool:** **Zoning:** 11 - A-1 Low Density Apartment **Sale Conditions:** None, Subject To Repl. Property **Schools:** , , * [Request Showing](#), [Photos](#), [History](#), [Maps](#), [Deed](#), [Watch List](#), [Tax Info](#)

DOM = Days on Market, Occ. = Occupancy, FL = Floor Number