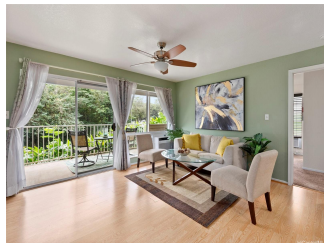


Evergreen Terrace 95-270 Waikalani Drive Unit C104, Mililani 96789 * Evergreen Terrace *

\$570,000

Beds: 2	MLS#: 202325985, FS	Year Built: 1992
Bath: 2/0	Status: Pending	Remodeled: 2019
Living Sq. Ft.: 934	List Date & DOM: 12-01-2023 & 7	Total Parking: 2
Land Sq. Ft.: 0	Condition: Above Average	Assessed Value
Lanai Sq. Ft.: 129	Frontage:	Building: \$253,200
Sq. Ft. Other: 0	Tax/Year: \$170/2023	Land: \$330,300
Total Sq. Ft. 1,063	Neighborhood: Waipio Acres-waikalani Woodlands	Total: \$583,500
Maint./Assoc. \$542 / \$0	Flood Zone : Zone D - Tool	Stories / CPR: One / No
Parking: Assigned, Covered - 1, Open - 1	Frontage:	
Zoning : 05 - R-5 Residential District	View: Garden	

Public Remarks: A must see Spacious 2 BEDROOM/2 BATH/2 PARKING in Evergreen Terrace! This charming, well-maintained, unit features an updated Kitchen with newer cabinets, granite counter and stainless-steel appliances. Wood laminate flooring and newer paint throughout. Updated Bathrooms to include newer cabinets, granite counters, ceramic tile flooring, and front-loading washer and dryer. Perfect for the first-time homebuyer, this complex is conveniently located on the Tech Park side of Waikalani Woodlands with great amenities (swimming pool, hot tub, playground and bbq area) with relatively reasonable maintenance fees. **Sale Conditions:** None **Schools:** [Wheeler](#), [Wheeler](#), [Leilehua](#) * [Request Showing](#), [Photos](#), [History](#), [Maps](#), [Deed](#), [Watch List](#), [Tax Info](#)



Address	Price	Bd & Bth	Living / Avg.	Land Avg.	Lanai	Occ.	FL	DOM
95-270 Waikalani Drive C104	\$570,000	2 & 2/0	934 \$610	0 \$inf	129	73%	1	7

Address	Tax Maint. Ass.	Assessed Land	Assessed Building	Assessed Total	Ratio	Year & Remodeled
95-270 Waikalani Drive C104	\$170 \$542 \$0	\$330,300	\$253,200	\$583,500	98%	1992 & 2019

[95-270 Waikalani Drive C104](#) - MLS#: [202325985](#) - A must see Spacious 2 BEDROOM/2 BATH/2 PARKING in Evergreen Terrace! This charming, well-maintained, unit features an updated Kitchen with newer cabinets, granite counter and stainless-steel appliances. Wood laminate flooring and newer paint throughout. Updated Bathrooms to include newer cabinets, granite counters, ceramic tile flooring, and front-loading washer and dryer. Perfect for the first-time homebuyer, this complex is conveniently located on the Tech Park side of Waikalani Woodlands with great amenities (swimming pool, hot tub, playground and bbq area) with relatively reasonable maintenance fees. **Region:** Central **Neighborhood:** Waipio Acres-waikalani Woodlands **Condition:** Above Average **Parking:** Assigned, Covered - 1, Open - 1 **Total Parking:** 2 **View:** Garden **Frontage:** Pool: **Zoning:** 05 - R-5 Residential District **Sale Conditions:** None **Schools:** [Wheeler](#), [Wheeler](#), [Leilehua](#) * [Request Showing](#), [Photos](#), [History](#), [Maps](#), [Deed](#), [Watch List](#), [Tax Info](#)

DOM = Days on Market, Occ. = Occupancy, FL = Floor Number