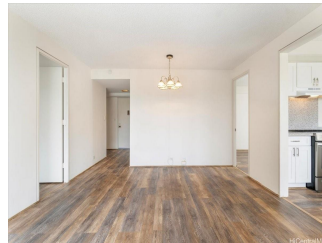


Palms Inc 431 Nahua Street Unit 601, Honolulu 96815 * \$569,888

Beds: **2** MLS#: **202408291, FS** Year Built: **1968**
Bath: **2/0** Status: **Active Under Contract** Remodeled:
Living Sq. Ft.: **824** List Date & DOM: **04-16-2024 & 21** Total Parking: **1**
Land Sq. Ft.: **0** Condition: **Average** [Assessed Value](#)
Lanai Sq. Ft.: **82** Frontage: Building: **\$434,300**
Sq. Ft. Other: **0** Tax/Year: **\$146/2023** Land: **\$67,300**
Total Sq. Ft. **906** Neighborhood: **Waikiki** Total: **\$501,600**
Maint./Assoc. **\$1,049 / \$0** [Flood Zone](#): **Zone AE - Tool** Stories / CPR: **15-20 / No**
Parking: **Assigned, Covered - 1** Frontage:
[Zoning](#): **X2 - Apartment Precinct** View: **City, Marina/Canal, Mountain**

Public Remarks: Best Value!! Don't miss this opportunity to own a 2BR/2BA/1COVERED PARKING condo in the heart of WAIKIKI!!! Enjoy the ultimate urban lifestyle just steps away from the International Market Place, Waikiki Market, upcoming Target, and the world-famous Waikiki Beach! The Palms Inc offers secure mid-rise living with amenities including a swimming pool, BBQ grill, and pet-friendly environment. This unit is situated on the cooler side of the building, boasting an efficient floor plan and a spacious open lanai with refreshing breezes and views of Ala Wai canal and mountains. Features include washer/dryer, stylish vinyl flooring, and newer cabinets. The monthly maintenance fee is \$1048.98, covering Sewer, Water, Electricity, Internet, and Cable TV. Additionally, the unit has three window AC units with an extra \$165/month AC fee. Please note that some photos have been virtually enhanced. **Sale Conditions:** None **Schools:** , , * [Request Showing](#), [Photos](#), [History](#), [Maps](#), [Deed](#), [Watch List](#), [Tax Info](#)



Address	Price	Bd & Bth	Living / Avg.	Land Avg.	DOM
431 Nahua Street 601	\$569,888	2 & 2/0	824 \$692	0 \$inf	21

Address	Tax Maint. Ass.	Assessed Land	Assessed Building	Assessed Total	Ratio	Year & Remodeled
431 Nahua Street 601	\$146 \$1,049 \$0	\$67,300	\$434,300	\$501,600	114%	1968 & NA

[431 Nahua Street 601](#) - MLS#: [202408291](#) - Best Value!! Don't miss this opportunity to own a 2BR/2BA/1COVERED PARKING condo in the heart of WAIKIKI!!! Enjoy the ultimate urban lifestyle just steps away from the International Market Place, Waikiki Market, upcoming Target, and the world-famous Waikiki Beach! The Palms Inc offers secure mid-rise living with amenities including a swimming pool, BBQ grill, and pet-friendly environment. This unit is situated on the cooler side of the building, boasting an efficient floor plan and a spacious open lanai with refreshing breezes and views of Ala Wai canal and mountains. Features include washer/dryer, stylish vinyl flooring, and newer cabinets. The monthly maintenance fee is \$1048.98, covering Sewer, Water, Electricity, Internet, and Cable TV. Additionally, the unit has three window AC units with an extra \$165/month AC fee. Please note that some photos have been virtually enhanced. **Region:** Metro **Neighborhood:** Waikiki **Condition:** Average **Parking:** Assigned, Covered - 1 **Total Parking:** 1 **View:** City, Marina/Canal, Mountain **Frontage:** Pool: **Zoning:** X2 - Apartment Precinct **Sale Conditions:** None **Schools:** , , * [Request Showing](#), [Photos](#), [History](#), [Maps](#), [Deed](#), [Watch List](#), [Tax Info](#)

DOM = Days on Market