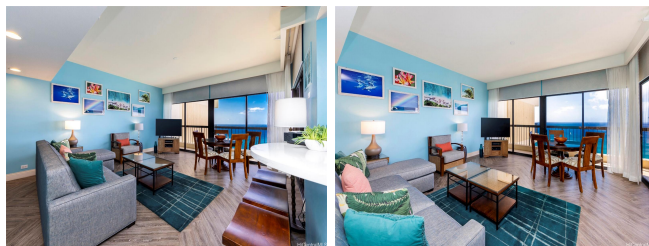


Waikiki Beach Tower 2470 Kalakaua Avenue Unit 4004, Honolulu 96815 * Waikiki Beach

Tower * \$1,100,000

Beds: 2	MLS#: 202409051 , LH	Year Built: 1983
Bath: 2/0	Status: Active	Remodeled: 2018
Living Sq. Ft.: 1,092	List Date & DOM: 04-30-2024 & 31	Total Parking: 2
Land Sq. Ft.: 24,045	Condition: Excellent	Assessed Value
Lanai Sq. Ft.: 171	Frontage: Other	Building: \$2,233,000
Sq. Ft. Other: 0	Tax/Year: \$2,935/2023	Land: \$224,500
Total Sq. Ft. 1,263	Neighborhood: Waikiki	Total: \$2,457,500
Maint./Assoc. \$3,094 / \$0	Flood Zone : Zone X - Tool	Stories / CPR: 21+ / No
Parking: Assigned, Covered - 2, Guest	Frontage: Other	
Zoning : X6 - Resort Mixed Use Precinct	View: City, Coastline, Diamond Head, Ocean, Sunset	

Public Remarks: Soaring above Waikiki, discover this top-floor Penthouse with stunning coastline, sandy beach, & Pacific Ocean panoramic views. This 40th floor Penthouse enjoys a spacious 2 bedroom, 2 bath, 1,092 sq.ft. floor plan with stunning vistas of paradise throughout the main living area, which connects to a 171 sq.ft. covered lanai and outdoor living space, where you can enjoy watching gentle ocean waves, surfers, and beach-goers. Unique to the Penthouse level, additional ceiling height helps to open up the feeling of the living space. Updated in 2017 with new furnishings, floorings, & cabinetry, plus custom upgrades including a separate walk-in shower and deep soaking tub in the primary bathroom, and new window systems in the bedrooms and primary bathroom, this turn-key island retreat is ready to welcome you home. This unrivaled location directly across from Waikiki Beach puts sandy shorelines, water sports, dining, shopping, and entertainment options all within blocks. Penthouse luxury living meets unobstructed views of paradise at Waikiki Beach Tower Penthouse #4004. Listing includes enhanced, zoomed-in photos. **Sale Conditions:** None **Schools:** , , * [Request Showing](#), [Photos](#), [History](#), [Maps](#), [Deed](#), [Watch List](#), [Tax Info](#)



Address	Price	Bd & Bth	Living / Avg.	Land Avg.	Lanai	Occ.	FL	DOM
2470 Kalakaua Avenue 4004	\$1,100,000 LH	2 & 2/0	1,092 \$1,007	24,045 \$46	171	1%	40	31

Address	Tax Maint. Ass.	Assessed Land	Assessed Building	Assessed Total	Ratio	Year & Remodeled
2470 Kalakaua Avenue 4004	\$2,935 \$3,094 \$0	\$224,500	\$2,233,000	\$2,457,500	45%	1983 & 2018

[2470 Kalakaua Avenue 4004](#) - MLS#: [202409051](#) - Soaring above Waikiki, discover this top-floor Penthouse with stunning coastline, sandy beach, & Pacific Ocean panoramic views. This 40th floor Penthouse enjoys a spacious 2 bedroom, 2 bath, 1,092 sq.ft. floor plan with stunning vistas of paradise throughout the main living area, which connects to a 171 sq.ft. covered lanai and outdoor living space, where you can enjoy watching gentle ocean waves, surfers, and beach-goers. Unique to the Penthouse level, additional ceiling height helps to open up the feeling of the living space. Updated in 2017 with new furnishings, floorings, & cabinetry, plus custom upgrades including a separate walk-in shower and deep soaking tub in the primary bathroom, and new window systems in the bedrooms and primary bathroom, this turn-key island retreat is ready to welcome you home. This unrivaled location directly across from Waikiki Beach puts sandy shorelines, water sports, dining, shopping, and entertainment options all within blocks. Penthouse luxury living meets unobstructed views of paradise at Waikiki Beach Tower Penthouse #4004. Listing includes enhanced, zoomed-in photos. **Region:** Metro **Neighborhood:** Waikiki **Condition:** Excellent **Parking:** Assigned, Covered - 2, Guest **Total Parking:** 2 **View:** City, Coastline, Diamond Head, Ocean, Sunset **Frontage:** Other **Pool:** **Zoning:** X6 - Resort Mixed Use Precinct **Sale Conditions:** None **Schools:** , , * [Request Showing](#), [Photos](#), [History](#), [Maps](#), [Deed](#), [Watch List](#), [Tax Info](#)

DOM = Days on Market, Occ. = Occupancy, FL = Floor Number