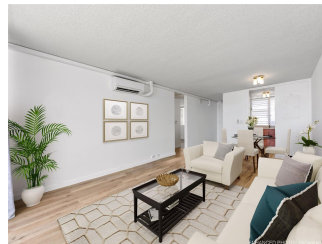


Banyan Tree Plaza 1212 Punahou Street Unit 2702, Honolulu 96826 * Banyan Tree Plaza ***\$450,000**

Beds: 1	MLS#: 202409142, FS	Year Built: 1974
Bath: 1/0	Status: Active	Remodeled:
Living Sq. Ft.: 717	List Date & DOM: 04-30-2024 & 31	Total Parking: 1
Land Sq. Ft.: 92,478	Condition: Excellent	Assessed Value
Lanai Sq. Ft.: 78	Frontage:	Building: \$383,300
Sq. Ft. Other: 0	Tax/Year: \$128/2023	Land: \$54,300
Total Sq. Ft. 795	Neighborhood: Punahou	Total: \$437,600
Maint./Assoc. \$813 / \$0	Flood Zone : Zone X - Tool	Stories / CPR: 21+ / No
Parking: Assigned, Covered - 1, Guest	Frontage:	
Zoning : 13 - A-3 High Density Apartment	View: City, Diamond Head	

Public Remarks: Enjoy urban living at its finest with this beautifully updated condo on the 27th floor of the VA approved Banyan Tree Plaza. This 717 sq ft condo + large lanai, is in the heart of Honolulu next to Shriners Children's Hospital, Kapiolani Medical Center, Punahou School, Safeway Grocery store, with easy access to the H-1 freeway and bus lines. The home is move in ready with luxury vinyl engineered wood flooring, fresh paint, TWO Mitsubishi split AC's, updated bathroom vanity & fixtures, washer/ dryer & lots of storage space. The kitchen features granite counters, custom cabinets & large windows that offer tons of natural light & a cross breeze while cooking. Relax on the lanai while enjoying your morning coffee or an evening cocktail surrounded by spectacular views of the city, mountains, ocean & Diamond Head. One covered parking stall is deeded w/ unit and the building provides 20 guest parking. There is a large Pool, BBQ area & party room to relax and entertain. This is a well maintained property and highly secured building with a call box to buzz guests in, gated parking structure, security guard and on site resident manager. Wonderful amenities and value! Schedule a showing today! **Sale Conditions:** None **Schools:** [Kaahumanu](#), [Washington](#), [Mckinley](#) * [Request Showing](#), [Photos](#), [History](#), [Maps](#), [Deed](#), [Watch List](#), [Tax Info](#)



Address	Price	Bd & Bth	Living / Avg.	Land Avg.	Lanai	Occ.	FL	DOM
1212 Punahou Street 2702	\$450,000	1 & 1/0	717 \$628	92,478 \$5	78	58%	27	31

Address	Tax Maint. Ass.	Assessed Land	Assessed Building	Assessed Total	Ratio	Year & Remodeled
1212 Punahou Street 2702	\$128 \$813 \$0	\$54,300	\$383,300	\$437,600	103%	1974 & NA

[1212 Punahou Street 2702](#) - MLS#: [202409142](#) - Enjoy urban living at its finest with this beautifully updated condo on the 27th floor of the VA approved Banyan Tree Plaza. This 717 sq ft condo + large lanai, is in the heart of Honolulu next to Shriners Children's Hospital, Kapiolani Medical Center, Punahou School, Safeway Grocery store, with easy access to the H-1 freeway and bus lines. The home is move in ready with luxury vinyl engineered wood flooring, fresh paint, TWO Mitsubishi split AC's, updated bathroom vanity & fixtures, washer/ dryer & lots of storage space. The kitchen features granite counters, custom cabinets & large windows that offer tons of natural light & a cross breeze while cooking. Relax on the lanai while enjoying your morning coffee or an evening cocktail surrounded by spectacular views of the city, mountains, ocean & Diamond Head. One covered parking stall is deeded w/ unit and the building provides 20 guest parking. There is a large Pool, BBQ area & party room to relax and entertain. This is a well maintained property and highly secured building with a call box to buzz guests in, gated parking structure, security guard and on site resident manager. Wonderful amenities and value! Schedule a showing today! **Region:** Metro **Neighborhood:** Punahou **Condition:** Excellent **Parking:** Assigned, Covered - 1, Guest **Total Parking:** 1 **View:** City, Diamond Head **Frontage:** Pool: **Zoning:** 13 - A-3 High Density Apartment **Sale Conditions:** None **Schools:** [Kaahumanu](#), [Washington](#), [Mckinley](#) * [Request Showing](#), [Photos](#), [History](#), [Maps](#), [Deed](#), [Watch List](#), [Tax Info](#)

DOM = Days on Market, Occ. = Occupancy, FL = Floor Number