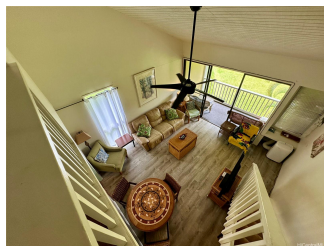


**Kuilima Ests East 57-068 Eleku Kuilima Place Unit 168, Kahuku 96731 \* Kuilima Ests East \*****\$1,388,000 \* Originally \$1,390,000**

Beds: <b>1</b>	MLS#: <b>202410449, FS</b>	Year Built: <b>1975</b>
Bath: <b>2/0</b>	Status: <b>Active</b>	Remodeled:
Living Sq. Ft.: <b>658</b>	List Date & DOM: <b>05-06-2024 &amp; 26</b>	Total Parking: <b>1</b>
Land Sq. Ft.: <b>647,519</b>	Condition: <b>Average</b>	<a href="#">Assessed Value</a>
Lanai Sq. Ft.: <b>127</b>	Frontage: <b>Golf Course</b>	Building: <b>\$730,900</b>
Sq. Ft. Other: <b>0</b>	Tax/Year: <b>\$282/2023</b>	Land: <b>\$235,200</b>
Total Sq. Ft. <b>785</b>	Neighborhood: <b>Kuilima</b>	Total: <b>\$966,100</b>
Maint./Assoc. <b>\$748 / \$0</b>	<a href="#">Flood Zone</a> : <b>Zone X - Tool</b>	Stories / CPR: <b>Two / No</b>
Parking: <b>Assigned, Guest, Open - 1, Secured Entry</b>	Frontage: <b>Golf Course</b>	
<a href="#">Zoning</a> : <b>11 - A-1 Low Density Apartment</b>	View: <b>Garden, Golf Course</b>	

**Public Remarks:** Nestled on the North Shore, this condo is located on the 18th hole of the Fazio Golf Course and promises not just a home, but an experience. Sip your coffee while you enjoy the golf course from your lanai. Step inside to discover a large end unit layout featuring one bedroom, loft bedroom and two bathrooms, with all furnishings for your stay. The open-concept layout is perfect for entertaining guests or simply unwinding after a day of adventure. From world-class golfing and surfing to hiking, horseback riding, and snorkeling, there's no shortage of activities to enjoy in this vibrant coastal community. But the true allure of this condo lies in its versatility. With legal permission for vacation rentals, you have the opportunity to generate extra income by sharing this slice of paradise with others when you're not enjoying it yourself. Whether you're looking for an investment property or a vacation home this condo offers endless possibilities. Don't miss your chance to own a piece of paradise, where every day feels like a vacation. Whether you're seeking a investment opportunity or a personal sanctuary to escape to, this condo offers the best of both worlds. Paradise awaits! **Sale Conditions:** None **Schools:** [Kahuku](#), [Kahuku](#), [Kahuku](#) \* [Request Showing](#), [Photos](#), [History](#), [Maps](#), [Deed](#), [Watch List](#), [Tax Info](#)



Address	Price	Bd & Bth	Living / Avg.	Land   Avg.	Lanai	Occ.	FL	DOM
<a href="#">57-068 Eleku Kuilima Place 168</a>	<b>\$1,388,000</b>	1 & 2/0	658   \$2,109	647,519   \$2	127	20%	2	26

Address	Tax   Maint.   Ass.	Assessed Land	Assessed Building	Assessed Total	Ratio	Year & Remodeled
<a href="#">57-068 Eleku Kuilima Place 168</a>	\$282   \$748   \$0	\$235,200	\$730,900	\$966,100	144%	1975 & NA

[57-068 Eleku Kuilima Place 168](#) - MLS#: [202410449](#) - Original price was \$1,390,000 - Nestled on the North Shore, this condo is located on the 18th hole of the Fazio Golf Course and promises not just a home, but an experience. Sip your coffee while you enjoy the golf course from your lanai. Step inside to discover a large end unit layout featuring one bedroom, loft bedroom and two bathrooms, with all furnishings for your stay. The open-concept layout is perfect for entertaining guests or simply unwinding after a day of adventure. From world-class golfing and surfing to hiking, horseback riding, and snorkeling, there's no shortage of activities to enjoy in this vibrant coastal community. But the true allure of this condo lies in its versatility. With legal permission for vacation rentals, you have the opportunity to generate extra income by sharing this slice of paradise with others when you're not enjoying it yourself. Whether you're looking for an investment property or a vacation home this condo offers endless possibilities. Don't miss your chance to own a piece of paradise, where every day feels like a vacation. Whether you're seeking a investment opportunity or a personal sanctuary to escape to, this condo offers the best of both worlds. Paradise awaits! **Region:** North Shore **Neighborhood:** Kuilima **Condition:** Average **Parking:** Assigned, Guest, Open - 1, Secured Entry **Total Parking:** 1 **View:** Garden, Golf Course **Frontage:** Golf Course **Pool:** **Zoning:** 11 - A-1 Low Density Apartment **Sale Conditions:** None **Schools:** [Kahuku](#), [Kahuku](#), [Kahuku](#) \* [Request Showing](#), [Photos](#), [History](#), [Maps](#), [Deed](#), [Watch List](#), [Tax Info](#)

DOM = Days on Market, Occ. = Occupancy, FL = Floor Number