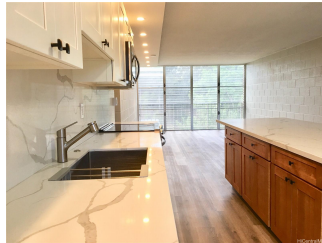


**waikalani Woodlands 95-273 Waikalani Drive Unit D1004, Mililani 96789 \* waikalani**

**Woodlands \* \$459,000 \* Originally \$467,000**

Beds: <b>2</b>	MLS#: <b>202410570, FS</b>	Year Built: <b>1976</b>
Bath: <b>1/0</b>	Status: <b>Active</b>	Remodeled: <b>2021</b>
Living Sq. Ft.: <b>890</b>	List Date & DOM: <b>05-03-2024 &amp; 29</b>	Total Parking: <b>2</b>
Land Sq. Ft.: <b>1,135,914</b>	Condition: <b>Above Average</b>	<a href="#">Assessed Value</a>
Lanai Sq. Ft.: <b>0</b>	Frontage: <b>Other</b>	Building: <b>\$198,800</b>
Sq. Ft. Other: <b>0</b>	Tax/Year: <b>\$126/2023</b>	Land: <b>\$234,300</b>
Total Sq. Ft. <b>890</b>	<b>Waipio Acres- waikalani Woodlands</b>	Total: <b>\$433,100</b>
Maint./Assoc. <b>\$696 / \$0</b>	<a href="#">Flood Zone</a> : <b>Zone D - Tool</b>	Stories / CPR: <b>One / No</b>
Parking: <b>Open - 2</b>	Frontage: <b>Other</b>	
<a href="#">Zoning</a> : <b>05 - R-5 Residential District</b>	View: <b>Garden</b>	

**Public Remarks:** Renovated in 2021! Great views and parking spaces that can be seen from the unit. 2 bedrooms and a modern contemporary bathroom that is a must see. Lighting soffits that are original and a layout which provides tons of storage. Extra storage outside and laundry inside the unit. Located just steps away from a Military Bases at Wheeler and Schofield Barracks, you'll have easy access to restaurants, grocery stores, freeway 24-hr Fitness, and much more. Just a short walk to the community pool, park, and playground, Guest parking. Don't miss out on the opportunity to make this beautiful condo your own in Launani Vally! **Sale Conditions:** None **Schools:** [Wheeler](#), [Wheeler](#), [Leilehua](#) \* [Request Showing](#), [Photos](#), [History](#), [Maps](#), [Deed](#), [Watch List](#), [Tax Info](#)



Address	Price	Bd & Bth	Living / Avg.	Land   Avg.	Lanai	Occ.	FL	DOM
<a href="#">95-273 Waikalani Drive D1004</a>	<b>\$459,000</b>	2 & 1/0	890   \$516	1,135,914   \$0	0	64%	10	29

Address	Tax   Maint.   Ass.	Assessed Land	Assessed Building	Assessed Total	Ratio	Year & Remodeled
<a href="#">95-273 Waikalani Drive D1004</a>	\$126   \$696   \$0	\$234,300	\$198,800	\$433,100	106%	1976 & 2021

[95-273 Waikalani Drive D1004](#) - MLS#: [202410570](#) - Original price was \$467,000 - Renovated in 2021! Great views and parking spaces that can be seen from the unit. 2 bedrooms and a modern contemporary bathroom that is a must see. Lighting soffits that are original and a layout which provides tons of storage. Extra storage outside and laundry inside the unit. Located just steps away from a Military Bases at Wheeler and Schofield Barracks, you'll have easy access to restaurants, grocery stores, freeway 24-hr Fitness, and much more. Just a short walk to the community pool, park, and playground, Guest parking. Don't miss out on the opportunity to make this beautiful condo your own in Launani Vally!  
**Region:** Central **Neighborhood:** Waipio Acres-waikalani Woodlands **Condition:** Above Average **Parking:** Open - 2 **Total Parking:** 2 **View:** Garden **Frontage:** Other **Pool:** **Zoning:** 05 - R-5 Residential District **Sale Conditions:** None **Schools:** [Wheeler](#), [Wheeler](#), [Leilehua](#) \* [Request Showing](#), [Photos](#), [History](#), [Maps](#), [Deed](#), [Watch List](#), [Tax Info](#)

DOM = Days on Market, Occ. = Occupancy, FL = Floor Number