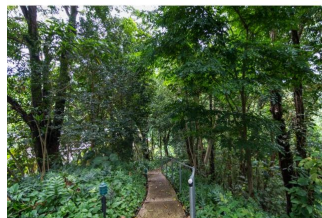
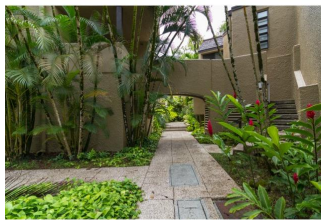
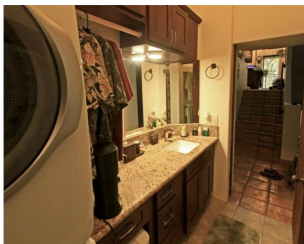
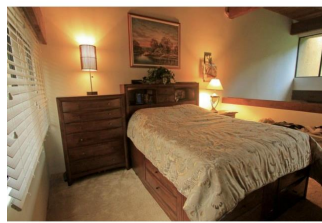


Eden At Haiku Woods B 46-369 Haiku Road Unit H11, Kaneohe 96744 * Eden At Haiku Woods B * \$579,000 * Originally \$585,000

Beds: 3	MLS#: 201419185, FS	Year Built: 1977
Bath: 2/0	Status: Cancelled	Remodeled:
Living Sq. Ft.: 1,507	List Date & DOM: 10-07-2014 & 56	Total Parking: 2
Land Sq. Ft.: 93,610	Condition: Excellent	Assessed Value
Lanai Sq. Ft.: 120	Frontage:	Building: \$340,200
Sq. Ft. Other: 0	Tax/Year: \$149/2014	Land: \$168,600
Total Sq. Ft. 1,627	Neighborhood: Haiku Plantation	Total: \$508,800
Maint./Assoc. \$550 / \$300	Flood Zone : Zone D - Tool	Stories / CPR: Three, Split Level / No
Parking: Assigned, Covered - 1, Guest, Open - 1, Open - 3+	Frontage:	
Zoning : 05 - R-5 Residential District	View: Garden, Mountain	

Public Remarks: Nestled in the lush Haiku Plantation neighborhood sits this wonderfully-remodeled 3-bedroom 2-full bath townhome with over 1,500 sq ft of living space, cathedral ceilings, and a large storage room that could be converted into a 4th bedroom. Home has a new gourmet kitchen with granite counter tops and new appliances. Bathrooms redone with granite counters, waterfall sinks, and new washer and dryer. Unit features 2 parking stalls (1 covered/1 open), with pool, hot tub, sauna & more. Future PV in discussion for entire community. Close to Windward Mall, Likelike, and H3. This is a must see home! **Sale Conditions:** None **Schools:** [Heeia](#), [King](#), [Castle](#) * [Request Showing](#), [Photos](#), [History](#), [Maps](#), [Deed](#), [Watch List](#), [Tax Info](#)



Address	Price	Bd & Bth	Living / Avg.	Land Avg.	Lanai	Occ.	FL	DOM
46-369 Haiku Road H11	\$579,000	3 & 2/0	1,507 \$384	93,610 \$6	120	74%	2	56

Address	Tax Maint. Ass.	Assessed Land	Assessed Building	Assessed Total	Ratio	Year & Remodeled
46-369 Haiku Road H11	\$149 \$550 \$300	\$168,600	\$340,200	\$508,800	114%	1977 & NA

[46-369 Haiku Road H11](#) - MLS#: [201419185](#) - Original price was \$585,000 - Nestled in the lush Haiku Plantation neighborhood sits this wonderfully-remodeled 3-bedroom 2-full bath townhome with over 1,500 sq ft of living space, cathedral ceilings, and a large storage room that could be converted into a 4th bedroom. Home has a new gourmet kitchen with granite counter tops and new appliances. Bathrooms redone with granite counters, waterfall sinks, and new washer and dryer. Unit features 2 parking stalls (1 covered/1 open), with pool, hot tub, sauna & more. Future PV in discussion for entire community. Close to Windward Mall, Likelike, and H3. This is a must see home! **Region:** Kaneohe **Neighborhood:** Haiku Plantation **Condition:** Excellent **Parking:** Assigned, Covered - 1, Guest, Open - 1, Open - 3+ **Total Parking:** 2 **View:** Garden, Mountain **Frontage:** **Pool:** **Zoning:** 05 - R-5 Residential District **Sale Conditions:** None **Schools:** [Heeia](#), [King](#), [Castle](#) * [Request Showing](#), [Photos](#), [History](#), [Maps](#), [Deed](#), [Watch List](#), [Tax Info](#)

DOM = Days on Market, Occ. = Occupancy, FL = Floor Number