

Eden At Haiku Woods B 46-369 Haiku Road Unit H11, Kaneohe 96744 * Eden At Haiku

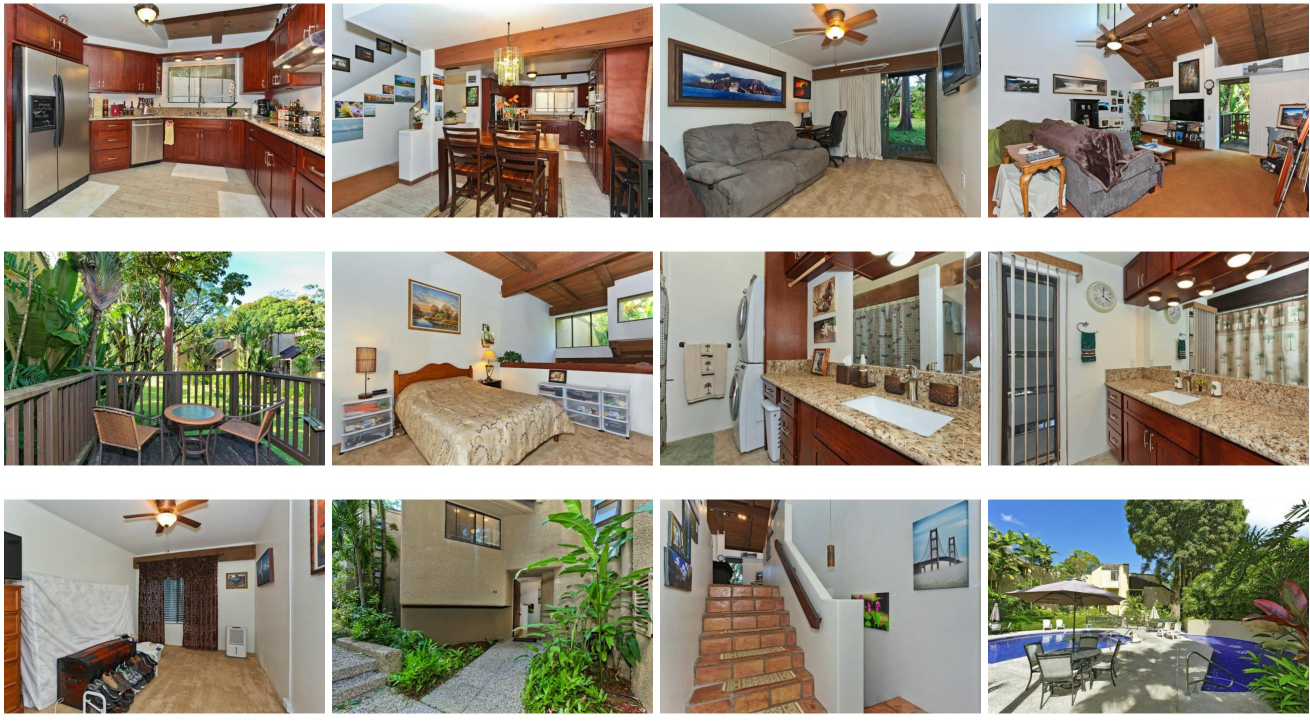
Woods B * \$579,000

Sold Price: \$580,000	Sold Date: 02-25-2015	Sold Ratio: 100%
Beds: 3	MLS#: 201500272 , FS	Year Built: 1977
Bath: 2/0	Status: Sold	Remodeled:
Living Sq. Ft.: 1,507	List Date & DOM: 01-07-2015 & 49	Total Parking: 2
Land Sq. Ft.: 93,610	Condition: Excellent	Assessed Value
Lanai Sq. Ft.: 120	Frontage:	Building: \$340,200
Sq. Ft. Other: 0	Tax/Year: \$149/2014	Land: \$168,600
Total Sq. Ft. 1,627	Neighborhood: Haiku Plantation	Total: \$508,800
Maint./Assoc. \$853 / \$0	Flood Zone : Zone D - Tool	Stories / CPR: Three, Split Level / No
Parking: Assigned, Covered - 1, Open - 1, Street	Frontage:	

[Zoning](#): **05 - R-5 Residential District**

View: **Garden, Mountain**

Public Remarks: Nestled in the quiet, lush Haiku Plantation, this wonderfully-remodeled 3-bedroom 2-full-bath townhome with over 1,500 sq. ft. of living space, cathedral ceilings, and a large storage room that could be converted into a 4th bedroom. Home has a new gourmet kitchen with granite counter tops and new appliances. Bathrooms redone with granite counters, waterfall sinks, and new washer/dryer. Unit features 5 parking stalls (1 covered/1 open/3 guest), with pool, hot tub, sauna & more. Future PV & AC in discussion with HOA. Close to Mall, Likelike, H3. Must see! \$5,000 painting & flooring allowance at close. **Sale Conditions:** None **Schools:** [Heeia](#), [King](#), [Castle](#) * [Request Showing](#), [Photos](#), [History](#), [Maps](#), [Deed](#), [Watch List](#), [Tax Info](#)



Address	Price	Bd & Bth	Living / Avg.	Land Avg.	Lanai	Occ.	FL	DOM
46-369 Haiku Road H11	\$579,000	3 & 2/0	1,507 \$384	93,610 \$6	120	74%	2	49

Address	Tax Maint. Ass.	Assessed Land	Assessed Building	Assessed Total	Ratio	Year & Remodeled
46-369 Haiku Road H11	\$149 \$853 \$0	\$168,600	\$340,200	\$508,800	114%	1977 & NA

Address	Sold Price	Sold Date	Sold Ratio	Original Ratio	Sold Terms
46-369 Haiku Road H11	\$580,000	02-25-2015	100%	100%	VA

[46-369 Haiku Road H11](#) - MLS#: [201500272](#) - Nestled in the quiet, lush Haiku Plantation, this wonderfully-remodeled 3-bedroom 2-full-bath townhome with over 1,500 sq. ft. of living space, cathedral ceilings, and a large storage room that could be converted into a 4th bedroom. Home has a new gourmet kitchen with granite counter tops and new appliances. Bathrooms redone with granite counters, waterfall sinks, and new washer/dryer. Unit features 5 parking stalls (1 covered/1 open/3 guest), with pool, hot tub, sauna & more. Future PV & AC in discussion with HOA. Close to Mall, Likelike, H3. Must see! \$5,000 painting & flooring allowance at close. **Region:** Kaneohe **Neighborhood:** Haiku Plantation **Condition:** Excellent **Parking:** Assigned, Covered - 1, Open - 1, Street **Total Parking:** 2 **View:** Garden, Mountain **Frontage:** **Pool:** **Zoning:** 05 - R-5 Residential District **Sale Conditions:** None **Schools:** [Heeia](#), [King](#), [Castle](#) * [Request Showing](#), [Photos](#), [History](#), [Maps](#), [Deed](#), [Watch List](#), [Tax Info](#)

DOM = Days on Market, Occ. = Occupancy, FL = Floor Number