

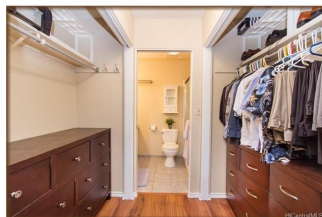
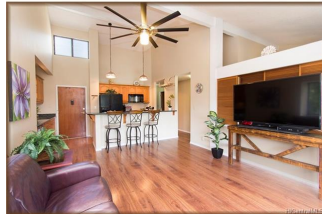
Puu Alii 1-4 46-065 Aliipapa Place Unit 1526, Kaneohe 96744 * Puu Alii 1-4 * \$570,000

Sold Price: \$570,000	Sold Date: 12-06-2016	Sold Ratio: 100%
Beds: 3	MLS#: <u>201626752</u>, FS	Year Built: 1979
Bath: 2/0	Status: Sold	Remodeled:
Living Sq. Ft.: 981	List Date & DOM: 10-26-2016 & 22	Total Parking: 3
Land Sq. Ft.: 123,972	Condition: Excellent	Assessed Value
Lanai Sq. Ft.: 84	Frontage:	Building: \$471,200
Sq. Ft. Other: 0	Tax/Year: \$154/2016	Land: \$55,800
Total Sq. Ft. 1,065	Neighborhood: Puualii	Total: \$527,000
Maint./Assoc. \$644 / \$0	Flood Zone : Zone X - Tool	Stories / CPR: / No
Parking: Assigned, Covered - 1, Garage, Open - 2	Frontage:	

[Zoning](#): **03 - R10 - Residential District**

View: **Mountain, Ocean**

Public Remarks: NEW LISTING! Beautifully renovated 3 bed / 2 bath corner-end unit w/ panoramic views & 3 parking! This one-of-a-kind, executive residence is situated at the end of a peaceful cul-de-sac, next to the park. Wide-open floor plan w/ soaring ceilings, split A/C, spacious kitchen w/ granite cntrs, custom cabinets, wine fridge. Or relax on lanai and enjoy views stretching from Kaneohe Bay to Koolaus. Surrounded by lush trees, its like living in a tree house. Upgrades include new W/D, high-end ceiling fans. Walk to amenities including pool, tennis courts, walking path. Don't miss this one! **Sale Conditions:** None **Schools:** [Parker](#), [King](#), [Castle](#) * [Request Showing](#), [Photos](#), [History](#), [Maps](#), [Deed](#), [Watch List](#), [Tax Info](#)





Address	Price	Bd & Bth	Living / Avg.	Land Avg.	Lanai	Occ.	FL	DOM
46-065 Aliipapa Place 1526	\$570,000	3 & 2/0	981 \$581	123,972 \$5	84	64%	2	22

Address	Tax Maint. Ass.	Assessed Land	Assessed Building	Assessed Total	Ratio	Year & Remodeled
46-065 Aliipapa Place 1526	\$154 \$644 \$0	\$55,800	\$471,200	\$527,000	108%	1979 & NA

Address	Sold Price	Sold Date	Sold Ratio	Original Ratio	Sold Terms
46-065 Aliipapa Place 1526	\$570,000	12-06-2016	100%	100%	Cash

[46-065 Aliipapa Place 1526](#) - MLS#: [201626752](#) - NEW LISTING! Beautifully renovated 3 bed / 2 bath corner-end unit w/ panoramic views & 3 parking! This one-of-a-kind, executive residence is situated at the end of a peaceful cul-de-sac, next to the park. Wide-open floor plan w/ soaring ceilings, split A/C, spacious kitchen w/ granite cntrs, custom cabinets, wine fridge. Or relax on lanai and enjoy views stretching from Kaneohe Bay to Koolaus. Surrounded by lush trees, its like living in a tree house. Upgrades include new W/D, high-end ceiling fans. Walk to amenities including pool, tennis courts, walking path. Don't miss this one! **Region:** Kaneohe **Neighborhood:** Puualii **Condition:** Excellent **Parking:** Assigned, Covered - 1, Garage, Open - 2 **Total Parking:** 3 **View:** Mountain, Ocean **Frontage:** **Pool:** **Zoning:** 03 - R10 - Residential District **Sale Conditions:** None **Schools:** [Parker](#), [King](#), [Castle](#) * [Request Showing](#), [Photos](#), [History](#), [Maps](#), [Deed](#), [Watch List](#), [Tax Info](#)

DOM = Days on Market, Occ. = Occupancy, FL = Floor Number