

Banyan Tree Plaza 1212 Punahou Street Unit 808, Honolulu 96826 * Banyan Tree Plaza *

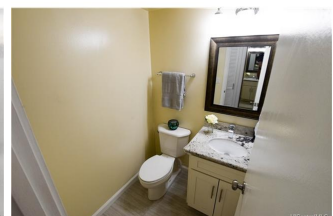
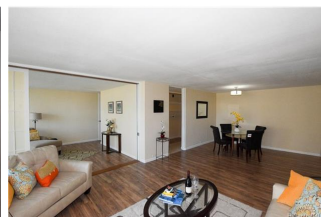
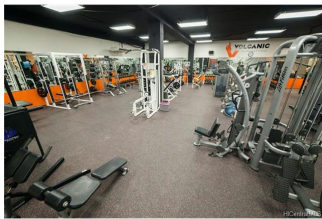
\$799,000 * Originally \$825,000

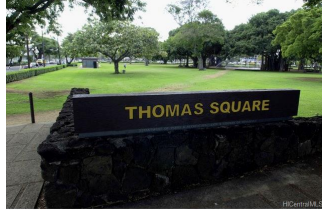
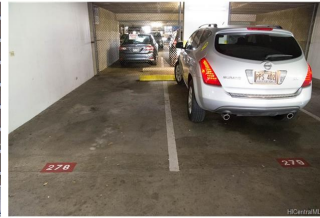
Sold Price: \$771,550	Sold Date: 06-22-2017	Sold Ratio: 97%
Beds: 4	MLS#: <u>201700639</u> , FS	Year Built: 1974
Bath: 2/1	Status: Sold	Remodeled: 2016
Living Sq. Ft.: 1,762	List Date & DOM: 01-11-2017 & 118	Total Parking: 2
Land Sq. Ft.: 92,478	Condition: Above Average, Excellent	Assessed Value
Lanai Sq. Ft.: 158	Frontage:	Building: \$732,300
Sq. Ft. Other: 0	Tax/Year: \$239/2016	Land: \$86,800
Total Sq. Ft. 1,920	Neighborhood: Punahou	Total: \$819,100
Maint./Assoc. \$1,101 / \$0	Flood Zone : Zone X - Tool	Stories / CPR: One / No
Parking: Assigned, Covered - 2, Garage, Secured Entry	Frontage:	

[Zoning](#): **13 - A-3 High Density Apartment**

View: **City, Mountain**

Public Remarks: EZ to Show..Over 1700sq feet. This 4Bed/2.5Bath is conveniently located. Unit is near Supermarkets, Hospitals, Parks, University of Hawaii and walking distance to Maryknoll and Punahou Schools (Walk Score 94). Stunning renovations throughout, New Kitchen with stainless steel appliances, fresh coat of paint, with lots of storage. Wide Open Floor Plan to Entertain family and friends, Imagine yourself Relaxing with a glass of wine in the Spa-like Master Bath. Enjoy cool trade-winds on your private lanai with Breath taking panoramic Diamond Head, City, Mountain, and Ocean View. Never worry about finding parking again, two side by side parking stalls near the first-floor entrance, pool, party room. Compare the \$0.62 per square foot maintenance fees with other buildings **Sale Conditions:** None **Schools:** , , * [Request Showing](#), [Photos](#), [History](#), [Maps](#), [Deed](#), [Watch List](#), [Tax Info](#)





Address	Price	Bd & Bth	Living / Avg.	Land Avg.	Lanai	Occ.	FL	DOM
1212 Punahou Street 808	\$799,000	4 & 2/1	1,762 \$453	92,478 \$9	158	55%	8	118

Address	Tax Maint. Ass.	Assessed Land	Assessed Building	Assessed Total	Ratio	Year & Remodeled
1212 Punahou Street 808	\$239 \$1,101 \$0	\$86,800	\$732,300	\$819,100	98%	1974 & 2016

Address	Sold Price	Sold Date	Sold Ratio	Original Ratio	Sold Terms
1212 Punahou Street 808	\$771,550	06-22-2017	97%	94%	Conventional 2000

[1212 Punahou Street 808](#) - MLS#: [201700639](#) - Original price was \$825,000 - EZ to Show..Over 1700sq feet. This 4Bed/2.5Bath is conveniently located. Unit is near Supermarkets, Hospitals, Parks, University of Hawaii and walking distance to Maryknoll and Punahou Schools (Walk Score 94). Stunning renovations throughout, New Kitchen with stainless steel appliances, fresh coat of paint, with lots of storage. Wide Open Floor Plan to Entertain family and friends, Imagine yourself Relaxing with a glass of wine in the Spa-like Master Bath. Enjoy cool trade-winds on your private lanai with Breath taking panoramic Diamond Head, City, Mountain, and Ocean View. Never worry about finding parking again, two side by side parking stalls near the first-floor entrance, pool, party room. Compare the \$0.62 per square foot maintenance fees with other buildings **Region:** Metro **Neighborhood:** Punahou **Condition:** Above Average, Excellent **Parking:** Assigned, Covered - 2, Garage, Secured Entry **Total Parking:** 2 **View:** City, Mountain **Frontage:** **Pool:** **Zoning:** 13 - A-3 High Density Apartment **Sale Conditions:** None **Schools:** , , * [Request Showing](#), [Photos](#), [History](#), [Maps](#), [Deed](#), [Watch List](#), [Tax Info](#)

DOM = Days on Market, Occ. = Occupancy, FL = Floor Number