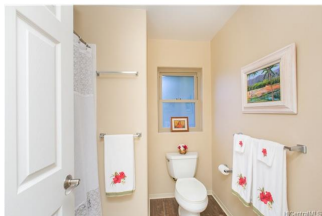
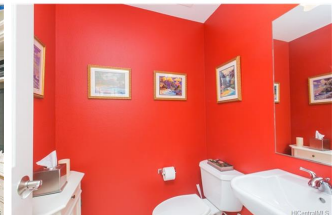


Moana Kai 7012 Hawaii Kai Drive Unit 1201, Honolulu 96825 * Moana Kai * \$825,000 *

Originally \$785,000

Sold Price: \$825,000	Sold Date: 05-26-2017	Sold Ratio: 100%
Beds: 3	MLS#: <u>201706979</u>, FS	Year Built: 2005
Bath: 2/1	Status: Sold	Remodeled: 2014
Living Sq. Ft.: 1,524	List Date & DOM: 04-03-2017 & 4	Total Parking: 2
Land Sq. Ft.: 0	Condition: Excellent	Assessed Value
Lanai Sq. Ft.: 216	Frontage:	Building: \$390,100
Sq. Ft. Other: 0	Tax/Yr: \$206/2016	Land: \$317,200
Total Sq. Ft. 1,740	Neighborhood: West Marina	Total: \$707,300
Maint./Assoc. \$414 / \$0	Flood Zone : Zone D - Tool	Stories / CPR: Two / No
Parking: Covered - 2, Garage, Guest	Frontage:	
Zoning : 12 - A-2 Medium Density Apartme	View: None	

Public Remarks: This beautifully updated end unit in the highly sought after complex of Moana Kai is an absolute must see. Features include central A/C, quartz counters in kitchen, high end laminate flooring, plantation shutters, private courtyard and a gracious, flowing floor plan. Upstairs features a generous master suite with walk in closet and a bonus family room/office area. There is a two car garage with room for a 3rd car and a guest parking stall right outside the front door. Feels like a single family home. Low maintenance fees combine to make this a fabulous value. Show it before it is gone. Sunday open cancelled. **Sale Conditions:** None **Schools:** [Hahaione](#), [Niu Valley](#), [Kaiser](#) * [Request Showing](#), [Photos](#), [History](#), [Maps](#), [Deed](#), [Watch List](#), [Tax Info](#)





Address	Price	Bd & Bth	Living / Avg.	Land Avg.	Lanai	Occ.	FL	DOM
7012 Hawaii Kai Drive 1201	\$825,000	3 & 2/1	1,524 \$541	0 \$inf	216	70%	1	4

Address	Tax Maint. Ass.	Assessed Land	Assessed Building	Assessed Total	Ratio	Year & Remodeled
7012 Hawaii Kai Drive 1201	\$206 \$414 \$0	\$317,200	\$390,100	\$707,300	117%	2005 & 2014

Address	Sold Price	Sold Date	Sold Ratio	Original Ratio	Sold Terms
7012 Hawaii Kai Drive 1201	\$825,000	05-26-2017	100%	105%	Conventional 1500

[7012 Hawaii Kai Drive 1201](#) - MLS#: [201706979](#) - Original price was \$785,000 - This beautifully updated end unit in the highly sought after complex of Moana Kai is an absolute must see. Features include central A/C, quartz counters in kitchen, high end laminate flooring, plantation shutters, private courtyard and a gracious, flowing floor plan. Upstairs features a generous master suite with walk in closet and a bonus family room/office area. There is a two car garage with room for a 3rd car and a guest parking stall right outside the front door. Feels like a single family home. Low maintenance fees combine to make this a fabulous value. Show it before it is gone. Sunday open cancelled. **Region:** Hawaii Kai **Neighborhood:** West Marina **Condition:** Excellent **Parking:** Covered - 2, Garage, Guest **Total Parking:** 2 **View:** None **Frontage:** **Pool:** **Zoning:** 12 - A-2 Medium Density Apartme **Sale Conditions:** None **Schools:** [Hahaione](#), [Niu Valley](#), [Kaiser](#) * [Request Showing](#), [Photos](#), [History](#), [Maps](#), [Deed](#), [Watch List](#), [Tax Info](#)

DOM = Days on Market, Occ. = Occupancy, FL = Floor Number