

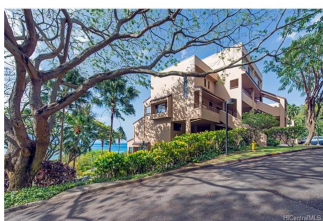
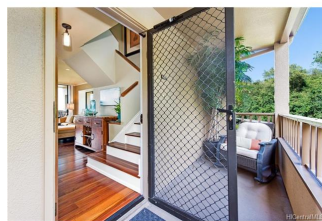
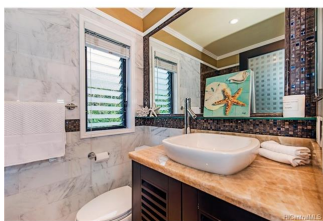
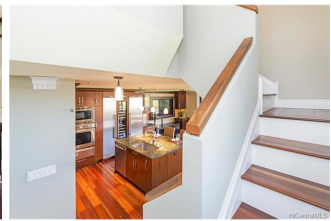
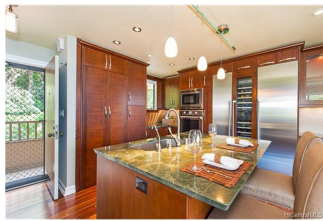
**Poha Kea Point 3 46-075 Meheanu Place Unit 3366, Kaneohe 96744 \* Poha Kea Point 3 \***

**\$750,000**

Sold Price: \$760,000	Sold Date: 05-15-2017	Sold Ratio: 101%
Beds: <b>2</b>	MLS#: <b><u>201708505</u>, FS</b>	Year Built: <b>1989</b>
Bath: <b>2/0</b>	Status: <b>Sold</b>	Remodeled: <b>2012</b>
Living Sq. Ft.: <b>896</b>	List Date & DOM: <b>04-21-2017 &amp; 4</b>	Total Parking: <b>2</b>
Land Sq. Ft.: <b>669,517</b>	Condition: <b>Excellent</b>	<a href="#">Assessed Value</a>
Lanai Sq. Ft.: <b>129</b>	Frontage: <b>Other</b>	Building: <b>\$406,200</b>
Sq. Ft. Other: <b>0</b>	Tax/Year: <b>\$131/2016</b>	Land: <b>\$135,700</b>
Total Sq. Ft. <b>1,025</b>	Neighborhood: <b>Lilipuna</b>	Total: <b>\$541,900</b>
Maint./Assoc. <b>\$726 / \$65</b>	<a href="#">Flood Zone</a> : <b>Zone X - Tool</b>	Stories / CPR: <b>Split Level / No</b>
Parking: <b>Assigned, Covered - 1, Guest</b>	Frontage: <b>Other</b>	
<a href="#">Zoning</a> : <b>03 - R10 - Residential District</b>	View: <b>Coastline, Garden, Mountain, Ocean</b>	

**Public Remarks:** PREPARE TO FALL IN LOVE, with the most luxuriously remodeled very private corner penthouse with two lanais. Your new oasis has stunning panoramic Kaneohe Bay and Ko'olau Mountain views from every room. The home owner spent over \$140,000.00 remodeling this home. Professional grade Thermador appliances, elecrolux steam washer and dryer, Eucalyptus wood floors, custom Asian mahogany cabinetry, Bosch tankless water heater, Italian granite in the kitchen, and honey onyx in the bathrooms. This unit comes with the coveted membership to Ali'i Shores Yacht Club, you can keep your boat and your other water toys at your club, so you can have direct access to Kaneohe Bay and the world famous Sand Bar. They are not accepting new members, this adds tremendous value to your new home. Pet Friendly! **Sale Conditions:** None

**Schools:** [Heeia](#), [King](#), [Castle](#) \* [Request Showing](#), [Photos](#), [History](#), [Maps](#), [Deed](#), [Watch List](#), [Tax Info](#)



Address	Price	Bd & Bth	Living / Avg.	Land   Avg.	Lanai	Occ.	FL	DOM
<a href="#">46-075 Meheanu Place 3366</a>	<a href="#">\$750,000</a>	2 & 2/0	896   \$837	669,517   \$1	129	59%	3	4

Address	Tax   Maint.   Ass.	Assessed Land	Assessed Building	Assessed Total	Ratio	Year & Remodeled
<a href="#">46-075 Meheanu Place 3366</a>	\$131   \$726   \$65	\$135,700	\$406,200	\$541,900	138%	1989 & 2012

Address	Sold Price	Sold Date	Sold Ratio	Original Ratio	Sold Terms
<a href="#">46-075 Meheanu Place 3366</a>	\$760,000	05-15-2017	101%	101%	Cash

[46-075 Meheanu Place 3366](#) - MLS#: [201708505](#) - PREPARE TO FALL IN LOVE, with the most luxuriously remodeled very private corner penthouse with two lanais. Your new oasis has stunning panoramic Kaneohe Bay and Ko'olau Mountain views from every room. The home owner spent over \$140,000.00 remodeling this home. Professional grade Thermador appliances, elecrolux steam washer and dryer, Eucalyptus wood floors, custom Asian mahogany cabinetry, Bosch tankless water heater, Italian granite in the kitchen, and honey onyx in the bathrooms. This unit comes with the coveted membership to Ali'i Shores Yacht Club, you can keep your boat and your other water toys at your club, so you can have direct access to Kaneohe Bay and the world famous Sand Bar. They are not accepting new members, this adds tremendous value to your new home. Pet Friendly! **Region:** Kaneohe **Neighborhood:** Lilipuna **Condition:** Excellent **Parking:** Assigned, Covered - 1, Guest **Total Parking:** 2 **View:** Coastline, Garden, Mountain, Ocean **Frontage:** Other **Pool:** **Zoning:** 03 - R10 - Residential District **Sale Conditions:** None **Schools:** [Heeia](#), [King](#), [Castle](#) \* [Request Showing](#), [Photos](#), [History](#), [Maps](#), [Deed](#), [Watch List](#), [Tax Info](#)

DOM = Days on Market, Occ. = Occupancy, FL = Floor Number