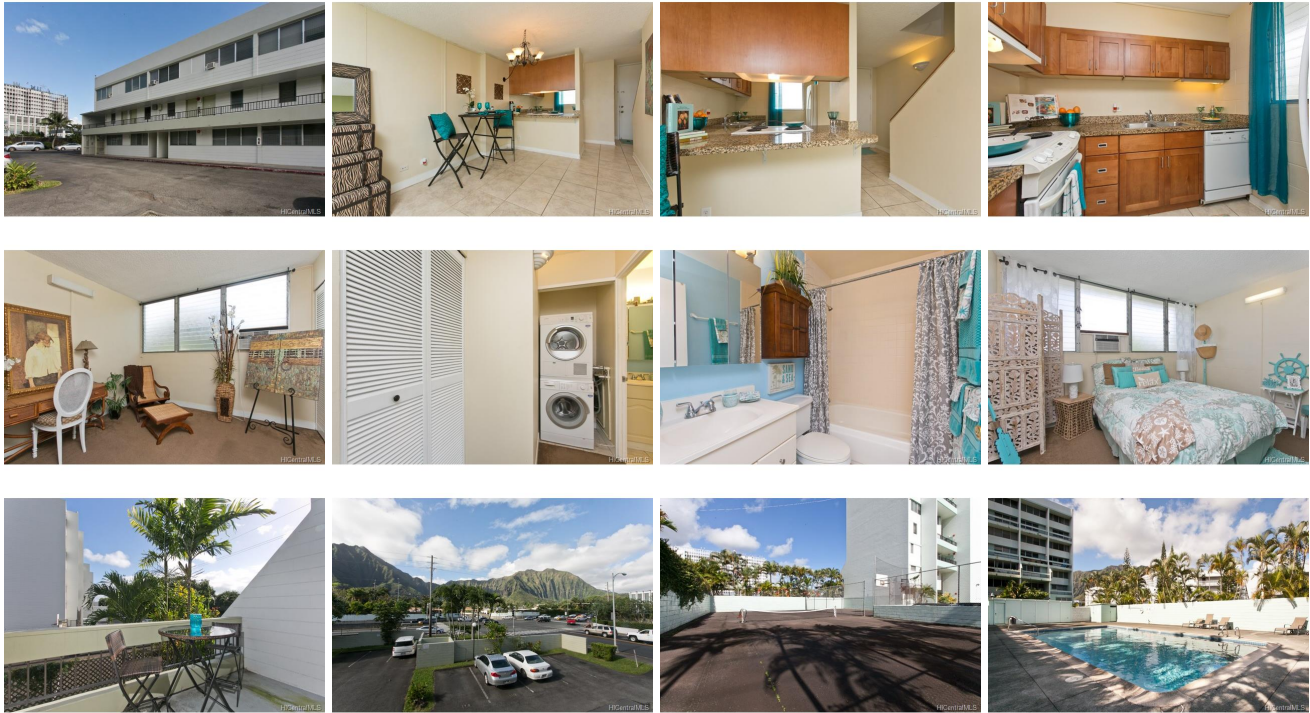


Mountain View Terrace 46-280 Kahuhipa Street Unit B203, Kaneohe 96744 * Mountain View Terrace * \$359,000 * Originally \$399,000

Sold Price: \$359,000	Sold Date: 03-08-2018	Sold Ratio: 100%
Beds: 2	MLS#: <u>201725386</u>, FS	Year Built: 1974
Bath: 1/0	Status: Sold	Remodeled:
Living Sq. Ft.: 850	List Date & DOM: 12-15-2017 & 38	Total Parking: 1
Land Sq. Ft.: 105,415	Condition: Above Average	Assessed Value
Lanai Sq. Ft.: 85	Frontage:	Building: \$248,800
Sq. Ft. Other: 0	Tax/Year: \$82/2017	Land: \$32,600
Total Sq. Ft. 935	Neighborhood: Windward Estates	Total: \$281,400
Maint./Assoc. \$441 / \$0	Flood Zone : Zone D - Tool	Stories / CPR: Two, Split Level / No
Parking: Assigned, Open - 1, Street	Frontage:	View: Mountain
Zoning : 12 - A-2 Medium Density Apartme		

Public Remarks: This lovely and completely renovated Mountainview Terrace unit is conveniently located off Kahekili Hwy and Kahuhipa in Kaneohe. The unit is a 2-story, 2- bed, 1 bath unit on 2nd floor with mountain views and several amenities. These amenities include: new porcelain tile, new paint, new refrigerator/freezer, new dishwasher, new granite countertops, new kitchen cabinets, new washer/drier, three wall A/C units and one assigned parking. Building amenities include pool, tennis courts, BBQ, and basketball court. Close to H3, Windward Mall, restaurants, theaters and more **Sale Conditions:** None
Schools: [Kapunahala](#), [King](#), [Castle](#) * [Request Showing](#), [Photos](#), [History](#), [Maps](#), [Deed](#), [Watch List](#), [Tax Info](#)



Address	Price	Bd & Bth	Living / Avg.	Land Avg.	Lanai	Occ.	FL	DOM
46-280 Kahuhipa Street B203	<u>\$359,000</u>	2 & 1/0	850 \$422	105,415 \$3	85	41%	2	38

Address	Tax Maint. Ass.	Assessed Land	Assessed Building	Assessed Total	Ratio	Year & Remodeled
46-280 Kahuhipa Street B203	\$82 \$441 \$0	\$32,600	\$248,800	\$281,400	128%	1974 & NA

Address	Sold Price	Sold Date	Sold Ratio	Original Ratio	Sold Terms
46-280 Kahuhipa Street B203	\$359,000	03-08-2018	100%	90%	Conventional

[46-280 Kahuhipa Street B203](#) - MLS#: [201725386](#) - Original price was \$399,000 - This lovely and completely renovated Mountainview Terrace unit is conveniently located off Kahekili Hwy and Kahuhipa in Kaneohe. The unit is a 2-story, 2- bed, 1 bath unit on 2nd floor with mountain views and several amenities. These amenities include: new porcelain tile, new paint, new refrigerator/freezer, new dishwasher, new granite countertops, new kitchen cabinets, new washer/drier, three wall A/C units and one assigned parking. Building amenities include pool, tennis courts, BBQ, and basketball court. Close to H3, Windward Mall, restaurants, theaters and more **Region:** Kaneohe **Neighborhood:** Windward Estates **Condition:** Above Average **Parking:** Assigned, Open - 1, Street **Total Parking:** 1 **View:** Mountain **Frontage:** **Pool:** **Zoning:** 12 - A-2 Medium Density Apartme **Sale Conditions:** None **Schools:** [Kapunahala](#), [King](#), [Castle](#) * [Request Showing](#), [Photos](#), [History](#), [Maps](#), [Deed](#), [Watch List](#), [Tax Info](#)

DOM = Days on Market, Occ. = Occupancy, FL = Floor Number