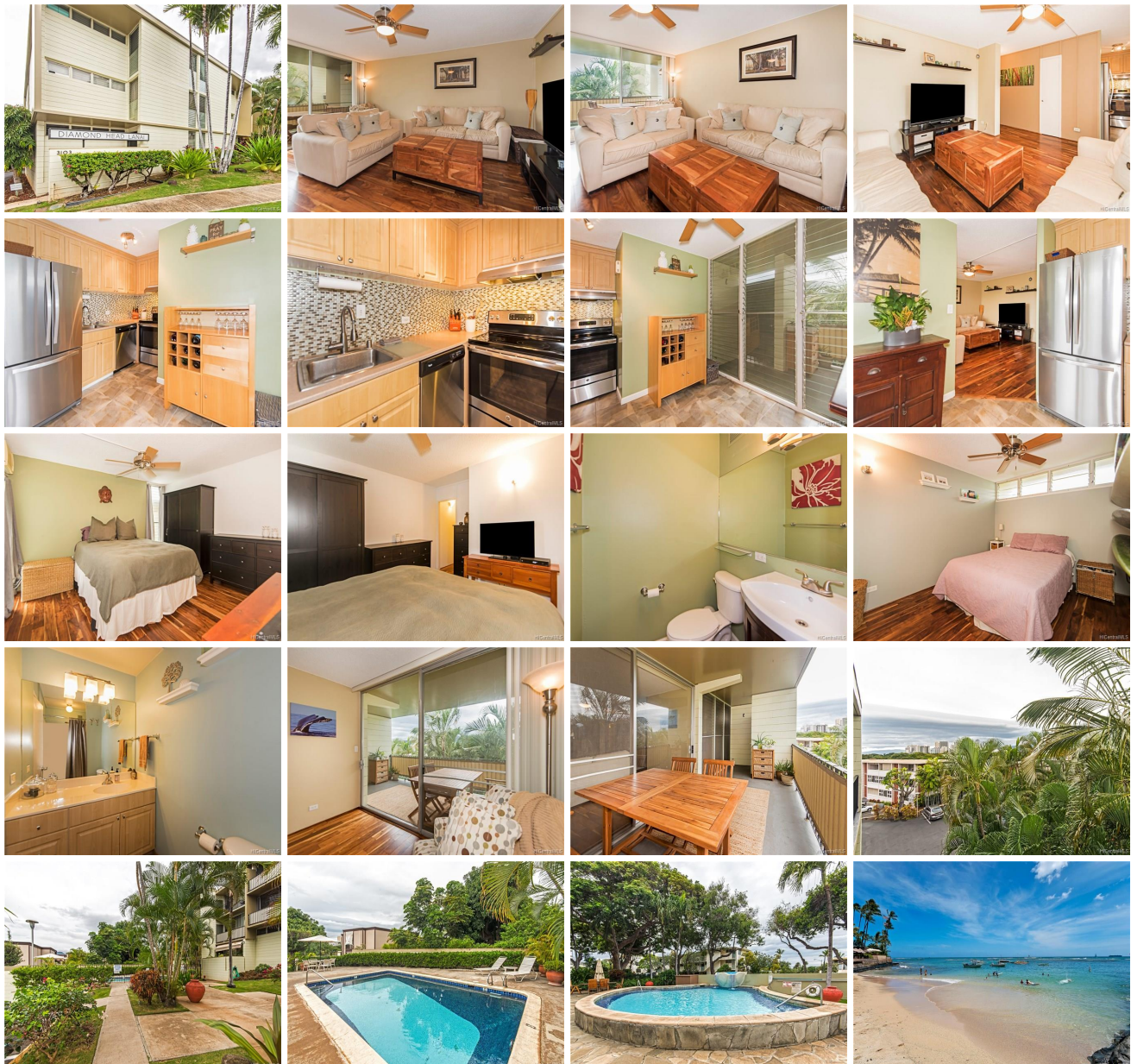


# **Diamond Head @ Pualei Cir 3103 Pualei Circle Unit 304, Honolulu 96815 \* Diamond Head @**

## **Pualei Cir \* \$599,000**

Sold Price: \$615,000	Sold Date: 02-02-2018	Sold Ratio: 103%
Beds: <b>2</b>	MLS#: <b><u>201726354</u>, FS</b>	Year Built: <b>1963</b>
Bath: <b>1/1</b>	Status: <b>Sold</b>	Remodeled: <b>2014</b>
Living Sq. Ft.: <b>763</b>	List Date & DOM: <b>01-02-2018 &amp; 6</b>	Total Parking: <b>1</b>
Land Sq. Ft.: <b>14,985</b>	Condition: <b>Excellent</b>	<a href="#">Assessed Value</a>
Lanai Sq. Ft.: <b>138</b>	Frontage: <b>Other</b>	Building: <b>\$409,300</b>
Sq. Ft. Other: <b>0</b>	Tax/Year: <b>\$157/2018</b>	Land: <b>\$165,600</b>
Total Sq. Ft. <b>901</b>	Neighborhood: <b>Diamond Head</b>	Total: <b>\$574,900</b>
Maint./Assoc. <b>\$490 / \$0</b>	<a href="#">Flood Zone</a> : <b>Zone X - Tool</b>	Stories / CPR: <b>One / No</b>
Parking: <b>Assigned, Street</b>	Frontage: <b>Other</b>	
<a href="#">Zoning</a> : <b>12 - A-2 Medium Density Apartme</b>	View: <b>City, Diamond Head, Mountain</b>	

**Public Remarks:** Must see quick before it's gone! Condo's in Pualei Circle like this do not come up very often and it won't last long. Kitchen and baths have been remodeled and it's in "move in ready" condition. There are 2 bedrooms and 1/1 bathrooms with an assigned parking stall right in front. A nice large covered lanai and a great layout make this very special. Upgrades include new stainless-steel appliances, real hardwood floors, ceramic tile, and more. It's a corner unit in a great location in the complex, very quiet. Walk to the beach and Kapiolani park! Complex is pet friendly as well. Great location right outside Waikiki and close to shopping and restaurants. See our online tour and make your appointment today or come visit our first public open house on 01/07/2018 from 2-5pm. **Sale Conditions:** None **Schools:** [Waikiki](#), [Kaimuki](#), [Kalani](#) \* [Request Showing](#), [Photos](#), [History](#), [Maps](#), [Deed](#), [Watch List](#), [Tax Info](#)





Address	Price	Bd & Bth	Living / Avg.	Land   Avg.	Lanai	Occ.	FL	DOM
<a href="#">3103 Pualei Circle 304</a>	<a href="#">\$599,000</a>	2 & 1/1	763   \$785	14,985   \$40	138	39%	3	6

Address	Tax   Maint.   Ass.	Assessed Land	Assessed Building	Assessed Total	Ratio	Year & Remodeled
<a href="#">3103 Pualei Circle 304</a>	\$157   \$490   \$0	\$165,600	\$409,300	\$574,900	104%	1963 & 2014

Address	Sold Price	Sold Date	Sold Ratio	Original Ratio	Sold Terms
<a href="#">3103 Pualei Circle 304</a>	\$615,000	02-02-2018	103%	103%	Conventional 750

[3103 Pualei Circle 304](#) - MLS#: [201726354](#) - Must see quick before it's gone! Condo's in Pualei Circle like this do not come up very often and it won't last long. Kitchen and baths have been remodeled and it's in "move in ready" condition. There are 2 bedrooms and 1/1 bathrooms with an assigned parking stall right in front. A nice large covered lanai and a great layout make this very special. Upgrades include new stainless-steel appliances, real hardwood floors, ceramic tile, and more. It's a corner unit in a great location in the complex, very quiet. Walk to the beach and Kapiolani park! Complex is pet friendly as well. Great location right outside Waikiki and close to shopping and restaurants. See our online tour and make your appointment today or come visit our first public open house on 01/07/2018 from 2-5pm. **Region:** Diamond Head **Neighborhood:** Diamond Head **Condition:** Excellent **Parking:** Assigned, Street **Total Parking:** 1 **View:** City, Diamond Head, Mountain **Frontage:** Other **Pool:** **Zoning:** 12 - A-2 Medium Density Apartme **Sale Conditions:** None **Schools:** [Waikiki](#), [Kaimuki](#), [Kalani](#) \* [Request Showing](#), [Photos](#), [History](#), [Maps](#), [Deed](#), [Watch List](#), [Tax Info](#)

DOM = Days on Market, Occ. = Occupancy, FL = Floor Number