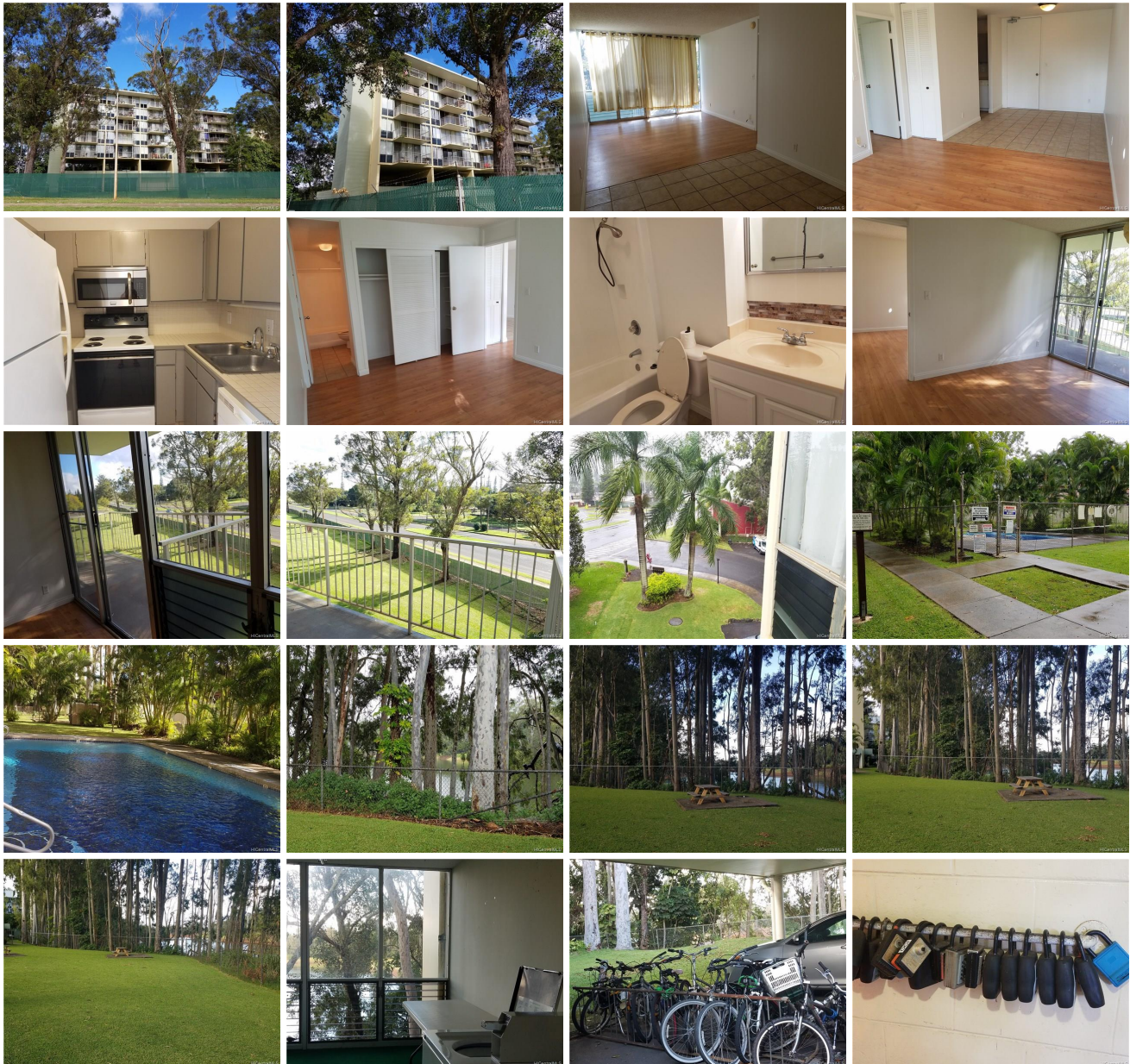


Woodwinds 1600 Wilikina Drive Unit A405, Wahiawa 96786 * Woodwinds * \$199,000

Sold Price: \$200,000	Sold Date: 02-23-2018	Sold Ratio: 101%
Beds: 1	MLS#: 201800058, FS	Year Built: 1974
Bath: 1/0	Status: Sold	Remodeled:
Living Sq. Ft.: 506	List Date & DOM: 01-02-2018 & 15	Total Parking: 1
Land Sq. Ft.: 110,599	Condition: Above Average	Assessed Value
Lanai Sq. Ft.: 75	Frontage: Lake/Pond	Building: \$107,600
Sq. Ft. Other: 0	Tax/Year: \$44/2017	Land: \$44,600
Total Sq. Ft. 581	Neighborhood: Wilikina	Total: \$152,200
Maint./Assoc. \$377 / \$0	Flood Zone : Zone D - Tool	Stories / CPR: Two / No
Parking: Assigned, Covered - 1, Guest	Frontage: Lake/Pond	
Zoning : 12 - A-2 Medium Density Apartme	View: Garden	

Public Remarks: Rarely Available and super affordable. Newly painted corner unit has good square footage, spacious lanai and a covered parking stall. Community laundry room on every floor. Enjoy the serene park-like barbecue area pool overlooking Lake Wilson. Located across Schofield Barracks and nearby freeway access. A short drive to Hawaii's world famous North Shore. Excellent 1st purchase. Just move in. Open House on Jan. 7th from 2-5pm. **Sale Conditions:** Probate

Schools: [Hale Kula](#), [Wheeler](#), [Leilehua](#) * [Request Showing](#), [Photos](#), [History](#), [Maps](#), [Deed](#), [Watch List](#), [Tax Info](#)



Address	Price	Bd & Bth	Living / Avg.	Land Avg.	Lanai	Occ.	FL	DOM
1600 Wilikina Drive A405	\$199,000	1 & 1/0	506 \$393	110,599 \$2	75	25%	4	15

Address	Tax Maint. Ass.	Assessed Land	Assessed Building	Assessed Total	Ratio	Year & Remodeled
1600 Wilikina Drive A405	\$44 \$377 \$0	\$44,600	\$107,600	\$152,200	131%	1974 & NA

Address	Sold Price	Sold Date	Sold Ratio	Original Ratio	Sold Terms
1600 Wilikina Drive A405	\$200,000	02-23-2018	101%	101%	Conventional

[1600 Wilikina Drive A405](#) - MLS#: [201800058](#) - Rarely Available and super affordable. Newly painted corner unit has good square footage, spacious lanai and a covered parking stall. Community laundry room on every floor. Enjoy the serene park-like barbecue area pool overlooking Lake Wilson. Located across Schofield Barracks and nearby freeway access. A short drive to Hawaii's world famous North Shore. Excellent 1st purchase. Just move in. Open House on Jan. 7th from 2-5pm.
Region: Central **Neighborhood:** Wilikina **Condition:** Above Average **Parking:** Assigned, Covered - 1, Guest **Total Parking:** 1 **View:** Garden **Frontage:** Lake/Pond **Pool:** **Zoning:** 12 - A-2 Medium Density Apartme **Sale Conditions:** Probate **Schools:** [Hale Kula](#), [Wheeler](#), [Leilehua](#) * [Request Showing](#), [Photos](#), [History](#), [Maps](#), [Deed](#), [Watch List](#), [Tax Info](#)

DOM = Days on Market, Occ. = Occupancy, FL = Floor Number