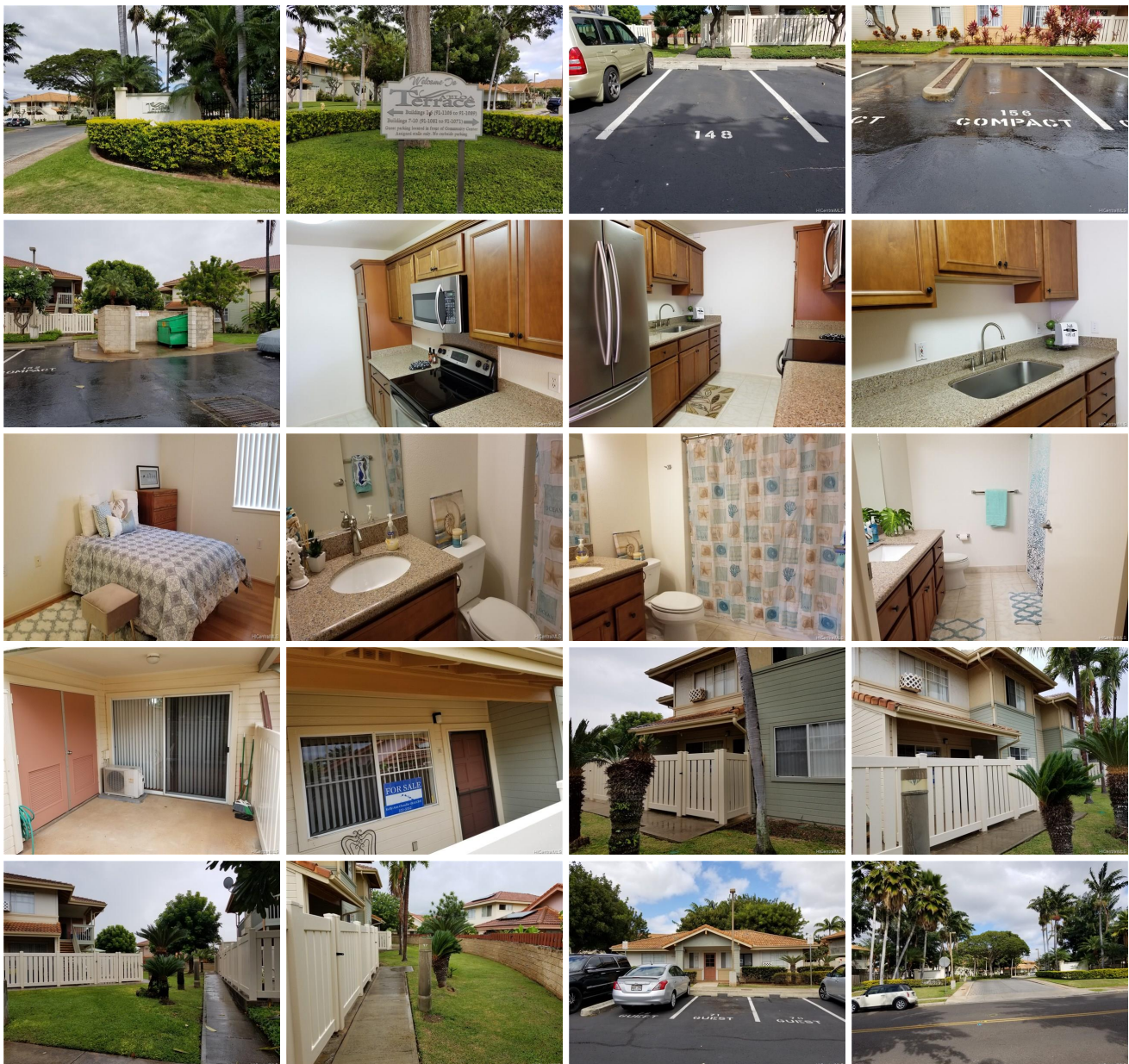
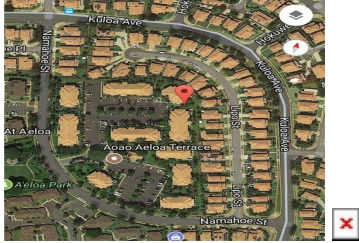


Aeloa Terrace 91-1097 Namahoe Street Unit 4C, Kapolei 96707 * Aeloa Terrace * \$380,000

Sold Price: \$385,000	Sold Date: 03-23-2018	Sold Ratio: 101%
Beds: 2	MLS#: <u>201804233</u> , FS	Year Built: 1996
Bath: 2/0	Status: Sold	Remodeled:
Living Sq. Ft.: 747	List Date & DOM: 02-13-2018 & 9	Total Parking: 2
Land Sq. Ft.: 238,535	Condition: Excellent	Assessed Value
Lanai Sq. Ft.: 151	Frontage:	Building: \$205,600
Sq. Ft. Other: 0	Tax/Year: \$71/2017	Land: \$116,100
Total Sq. Ft. 898	Neighborhood: Kapolei	Total: \$321,700
Maint./Assoc. \$353 / \$42	Flood Zone : Zone D - Tool	Stories / CPR: / No
Parking: Assigned, Guest	Frontage:	
Zoning : 11 - A-1 Low Density Apartment	View: None	

Public Remarks: Live, work & play in the Villages of Kapolei. This is a must see 2 bedroom, 2 bath, 2 parking townhome. Rarely available unit in Aeloa Terrace. Remodeled kitchen in 2010 with new cabinets, Silestone countertops, stainless steel appliances, tile in kitchen & baths, laminate in living areas, brand new interior paint, front door & storage closet doors also freshly painted, brand new screen door, all window screens have been replaced, tubs refinished. 1st open house on Sunday, 2/18 from 2-5pm. **Sale Conditions:** None **Schools:** , , * [Request Showing](#), [Photos](#), [History](#), [Maps](#), [Deed](#), [Watch List](#), [Tax Info](#)





Address	Price	Bd & Bth	Living / Avg.	Land Avg.	Lanai	Occ.	FL	DOM
91-1097 Namahoe Street 4C	\$380,000	2 & 2/0	747 \$509	238,535 \$2	151	63%	1	9

Address	Tax Maint. Ass.	Assessed Land	Assessed Building	Assessed Total	Ratio	Year & Remodeled
91-1097 Namahoe Street 4C	\$71 \$353 \$42	\$116,100	\$205,600	\$321,700	118%	1996 & NA

Address	Sold Price	Sold Date	Sold Ratio	Original Ratio	Sold Terms
91-1097 Namahoe Street 4C	\$385,000	03-23-2018	101%	101%	Cash 1000

91-1097 Namahoe Street 4C - MLS#: 201804233 - Live, work & play in the Villages of Kapolei. This is a must see 2 bedroom, 2 bath, 2 parking townhome. Rarely available unit in Aeloa Terrace. Remodeled kitchen in 2010 with new cabinets, Silestone countertops, stainless steel appliances, tile in kitchen & baths, laminate in living areas, brand new interior paint, front door & storage closet doors also freshly painted, brand new screen door, all window screens have been replaced, tubs refinished. 1st open house on Sunday, 2/18 from 2-5pm. Region: Ewa Plain Neighborhood: Kapolei Condition: Excellent Parking: Assigned, Guest Total Parking: 2 View: None Frontage: Pool: Zoning: 11 - A-1 Low Density Apartment Sale Conditions: None Schools: , , * Request Showing , Photos , History , Maps , Deed , Watch List , Tax Info					
--	--	--	--	--	--

DOM = Days on Market, Occ. = Occupancy, FL = Floor Number