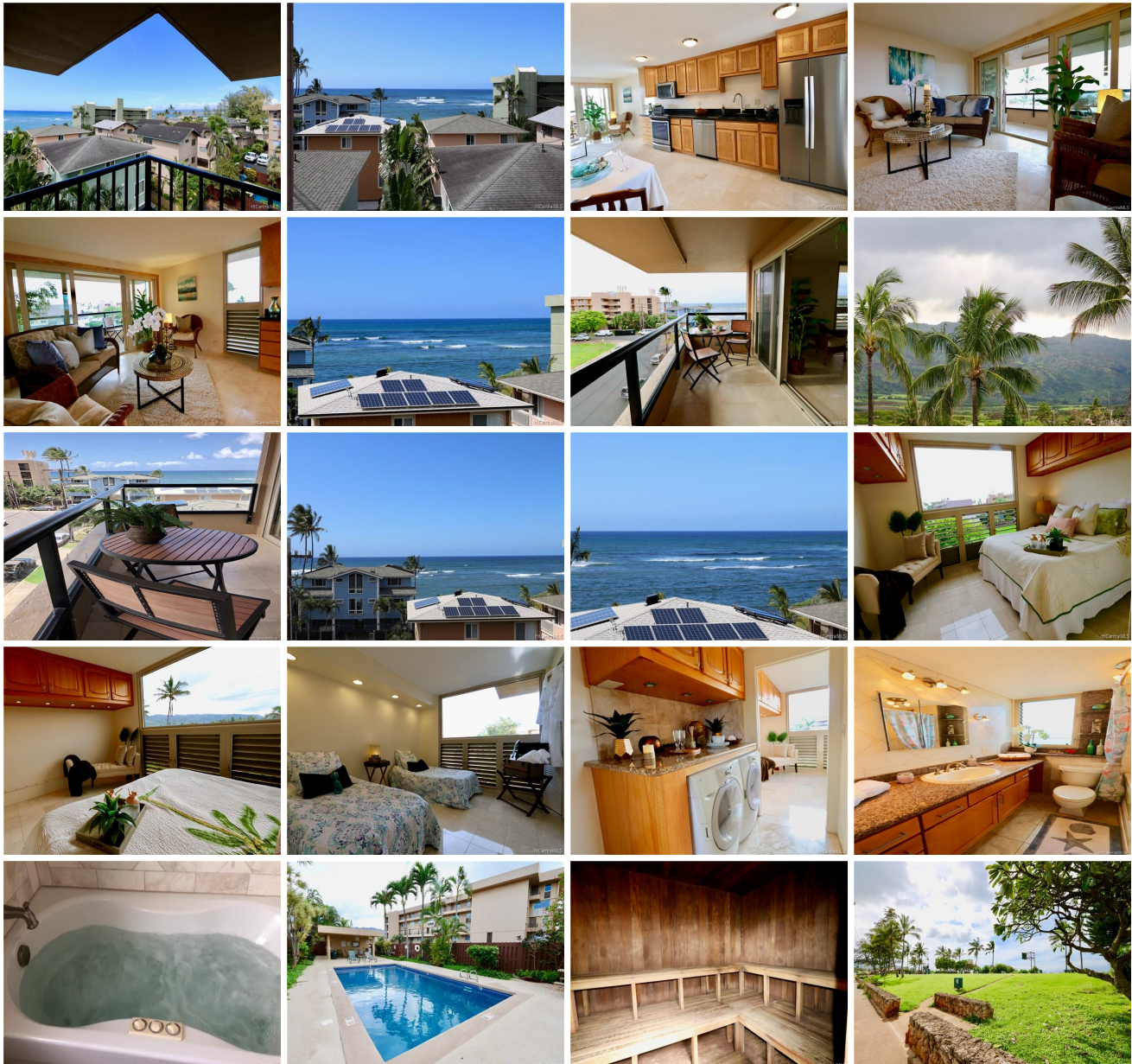


**Ono Vista 68-024 Apuhihi Street Unit W501, Waialua 96791 \* Ono Vista \* \$495,000 \***

**Originally \$595,000**

Sold Price: \$460,000	Sold Date: 09-04-2018	Sold Ratio: 93%
Beds: <b>2</b>	MLS#: <b><u>201809890</u></b> , FS	Year Built: <b>1975</b>
Bath: <b>1/0</b>	Status: <b>Sold</b>	Remodeled: <b>2018</b>
Living Sq. Ft.: <b>788</b>	List Date & DOM: <b>04-19-2018 &amp; 100</b>	Total Parking: <b>5</b>
Land Sq. Ft.: <b>51,662</b>	Condition: <b>Excellent</b>	<a href="#">Assessed Value</a>
Lanai Sq. Ft.: <b>76</b>	Frontage: <b>Other</b>	Building: <b>\$311,800</b>
Sq. Ft. Other: <b>0</b>	Tax/Year: <b>\$102/2017</b>	Land: <b>\$69,400</b>
Total Sq. Ft. <b>864</b>	Neighborhood: <b>Waialua</b>	Total: <b>\$381,200</b>
Maint./Assoc. <b>\$727 / \$0</b>	<a href="#">Flood Zone</a> : <b>Zone VE - <u>Tool</u></b>	Stories / CPR: <b>Split Level / No</b>
Parking: <b>Assigned, Open - 3+, Street</b>	Frontage: <b>Other</b>	
<a href="#">Zoning</a> : <b>12 - A-2 Medium Density Apartme</b>	View: <b>Coastline, Mountain, Ocean, Sunrise, Sunset</b>	

**Public Remarks:** Own a piece of paradise with spectacular ocean and mountain views! This rarely available corner unit is being offered for the first time in 28 years. Thoughtfully crafted renovations include: newly-renovated kitchen with granite countertop, new appliances and new cabinets; Travertine and marble flooring; Pella dual sliding doors leading to the open lanai; custom-made closet system with stainless steel rods; storage space galore. Enjoy the breezy cross-ventilation. Lounge on the lanai as you sip your favorite beverage, listen to the sounds of the ocean waves, and enjoy the views. And to top it all off, this property comes with five parking stalls! **Sale Conditions:** None **Schools:** [Waialua](#), [Waialua](#), [Waialua](#) \* [Request Showing](#), [Photos](#), [History](#), [Maps](#), [Deed](#), [Watch List](#), [Tax Info](#)





Address	Price	Bd & Bth	Living / Avg.	Land   Avg.	Lanai	Occ.	FL	DOM
<a href="#">68-024 Apuhihi Street W501</a>	<b>\$495,000</b>	2 & 1/0	788   \$628	51,662   \$10	76	44%	5	100

Address	Tax   Maint.   Ass.	Assessed Land	Assessed Building	Assessed Total	Ratio	Year & Remodeled
<a href="#">68-024 Apuhihi Street W501</a>	\$102   \$727   \$0	\$69,400	\$311,800	\$381,200	130%	1975 & 2018

Address	Sold Price	Sold Date	Sold Ratio	Original Ratio	Sold Terms
<a href="#">68-024 Apuhihi Street W501</a>	\$460,000	09-04-2018	93%	77%	Conventional 800

[68-024 Apuhihi Street W501](#) - MLS#: [201809890](#) - Original price was \$595,000 - Own a piece of paradise with spectacular ocean and mountain views! This rarely available corner unit is being offered for the first time in 28 years. Thoughtfully crafted renovations include: newly-renovated kitchen with granite countertop, new appliances and new cabinets; Travertine and marble flooring; Pella dual sliding doors leading to the open lanai; custom-made closet system with stainless steel rods; storage space galore. Enjoy the breezy cross-ventilation. Lounge on the lanai as you sip your favorite beverage, listen to the sounds of the ocean waves, and enjoy the views. And to top it all off, this property comes with five parking stalls! **Region:** North Shore **Neighborhood:** Waialua **Condition:** Excellent **Parking:** Assigned, Open - 3+, Street **Total Parking:** 5 **View:** Coastline, Mountain, Ocean, Sunrise, Sunset **Frontage:** Other **Pool:** **Zoning:** 12 - A-2 Medium Density Apartme **Sale Conditions:** None **Schools:** [Waialua](#), [Waialua](#), [Waialua](#) \* [Request Showing](#), [Photos](#), [History](#), [Maps](#), [Deed](#), [Watch List](#), [Tax Info](#)

DOM = Days on Market, Occ. = Occupancy, FL = Floor Number