

Pearl Ridge Gdns & Twr 98-1038 Moanalua Road Unit 7-2104, Aiea 96701 * Pearl Ridge

Gdns & Twr * \$212,500

Sold Price: \$212,500	Sold Date: 06-20-2018	Sold Ratio: 100%
Beds: 1	MLS#: <u>201812467</u> , FS	Year Built: 1976
Bath: 1/0	Status: Sold	Remodeled:
Living Sq. Ft.: 523	List Date & DOM: 05-14-2018 & 4	Total Parking: 1
Land Sq. Ft.: 250,557	Condition: Average	Assessed Value
Lanai Sq. Ft.: 60	Frontage: Other	Building: \$133,000
Sq. Ft. Other: 0	Tax/Year: \$62/2018	Land: \$79,500
Total Sq. Ft. 583	Neighborhood: Pearlridge	Total: \$212,500
Maint./Assoc. \$387 / \$0	Flood Zone : Zone X - Tool	Stories / CPR: 21+ / No

Parking: **Assigned, Covered - 1, Guest, Street**

Frontage: **Other**

[Zoning](#): **13 - A-3 High Density Apartment**

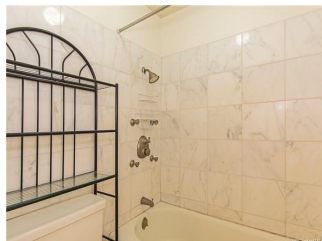
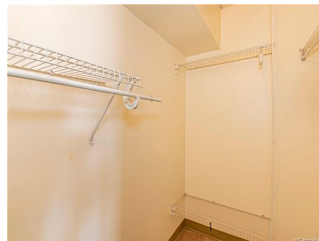
View: **Coastline, Garden, Mountain, Ocean**

Public Remarks: Must see quick before it's gone! Condo's with a view like this do not come up very often and it won't last long. It's a corner end unit, there's 523 sf of living space, a 60 sf lanai, 1 bedroom, 1 bath, and 1 covered parking stall. It's got a very nice layout with awesome ocean/harbor views. The bedroom can be open or closed, is good sized, and even has a walk-in closet. It's in a great location right across the street from Pearl Ridge Mall. There are 2 swimming pools, multiple bbq areas, and a hot tub. It was previously rented for \$1750/month. Other monthly maintenance fee is for capital improvements to the building. Watch our online tour and come visit our first public open house on 5-20-2018. **Sale Conditions:** None

Schools: [Pearl Ridge](#), [Aiea](#), [Aiea](#) * [Request Showing](#), [Photos](#), [History](#), [Maps](#), [Deed](#), [Watch List](#), [Tax Info](#)



For Display Purposes Only





Address	Price	Bd & Bth	Living / Avg.	Land Avg.	Lanai	Occ.	FL	DOM
98-1038 Moanalua Road 7-2104	\$212,500	1 & 1/0	523 \$406	250,557 \$1	60	56%	21	4

Address	Tax Maint. Ass.	Assessed Land	Assessed Building	Assessed Total	Ratio	Year & Remodeled
98-1038 Moanalua Road 7-2104	\$62 \$387 \$0	\$79,500	\$133,000	\$212,500	100%	1976 & NA

Address	Sold Price	Sold Date	Sold Ratio	Original Ratio	Sold Terms
98-1038 Moanalua Road 7-2104	\$212,500	06-20-2018	100%	100%	Cash

[98-1038 Moanalua Road 7-2104](#) - MLS#: [201812467](#) - Must see quick before it's gone! Condo's with a view like this do not come up very often and it won't last long. It's a corner end unit, there's 523 sf of living space, a 60 sf lanai, 1 bedroom, 1 bath, and 1 covered parking stall. It's got a very nice layout with awesome ocean/harbor views. The bedroom can be open or closed, is good sized, and even has a walk-in closet. It's in a great location right across the street from Pearl Ridge Mall. There are 2 swimming pools, multiple bbq areas, and a hot tub. It was previously rented for \$1750/month. Other monthly maintenance fee is for capital improvements to the building. Watch our online tour and come visit our first public open house on 5-20-2018. **Region:** Pearl City **Neighborhood:** Pearlridge **Condition:** Average **Parking:** Assigned, Covered - 1, Guest, Street **Total Parking:** 1 **View:** Coastline, Garden, Mountain, Ocean **Frontage:** Other **Pool:** **Zoning:** 13 - A-3 High Density Apartment **Sale Conditions:** None **Schools:** [Pearl Ridge](#), [Aiea](#), [Aiea](#) * [Request Showing](#), [Photos](#), [History](#), [Maps](#), [Deed](#), [Watch List](#), [Tax Info](#)

DOM = Days on Market, Occ. = Occupancy, FL = Floor Number