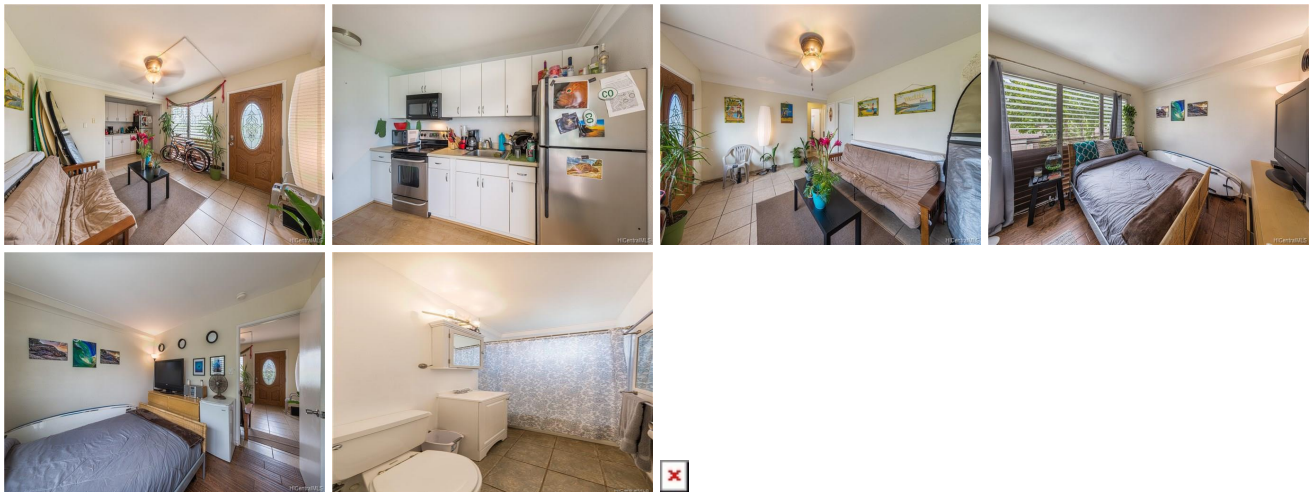


# **Mokuleia Surf 68-101 Waialua Beach Road Unit 201, Waialua 96791 \* Mokuleia Surf \***

**\$190,000**

Sold Price: \$190,000	Sold Date: 09-12-2018	Sold Ratio: 100%
Beds: <b>2</b>	MLS#: <b>201815647, FS</b>	Year Built: <b>1975</b>
Bath: <b>1/0</b>	Status: <b>Sold</b>	Remodeled:
Living Sq. Ft.: <b>561</b>	List Date & DOM: <b>06-07-2018 &amp; 1</b>	Total Parking: <b>1</b>
Land Sq. Ft.: <b>14,331</b>	Condition: <b>Average</b>	<a href="#">Assessed Value</a>
Lanai Sq. Ft.: <b>0</b>	Frontage: <b>Other</b>	Building: <b>\$116,800</b>
Sq. Ft. Other: <b>0</b>	Tax/Year: <b>\$61/2017</b>	Land: <b>\$92,800</b>
Total Sq. Ft. <b>561</b>	Neighborhood: <b>Waialua</b>	Total: <b>\$209,600</b>
Maint./Assoc. <b>\$581 / \$0</b>	<a href="#">Flood Zone</a> : <b>Zone AE - Tool</b>	Stories / CPR: <b>Three+ / No</b>
Parking: <b>Assigned</b>	Frontage: <b>Other</b>	
<a href="#">Zoning</a> : <b>11 - A-1 Low Density Apartment</b>	View: <b>Coastline, Mountain, Ocean, Sunrise, Sunset</b>	

**Public Remarks:** A block from the beach and directly across from the Waialua bike path, this is the perfect two bedroom property for owner occupants and investors alike! Assigned parking and a rooftop deck with mountain and ocean views are just a few ideal features in this boutique building. Waialua is a desirable location for world-class surfing, snorkeling, skydiving, and polo. Just a few miles to historic Haleiwa Town. Spacious and breezy country living in a great location. The building is pet-friendly. **Sale Conditions:** None **Schools:** [Haleiwa](#), [Waialua](#), [Waialua](#) \* [Request Showing](#), [Photos](#), [History](#), [Maps](#), [Deed](#), [Watch List](#), [Tax Info](#)



Address	Price	Bd & Bth	Living / Avg.	Land   Avg.	Lanai	Occ.	FL	DOM
<a href="#">68-101 Waialua Beach Road 201</a>	<a href="#">\$190,000</a>	2 & 1/0	561   \$339	14,331   \$13	0	8%	1	1

Address	Tax   Maint.   Ass.	Assessed Land	Assessed Building	Assessed Total	Ratio	Year & Remodeled
<a href="#">68-101 Waialua Beach Road 201</a>	\$61   \$581   \$0	\$92,800	\$116,800	\$209,600	91%	1975 & NA

Address	Sold Price	Sold Date	Sold Ratio	Original Ratio	Sold Terms
<a href="#">68-101 Waialua Beach Road 201</a>	\$190,000	09-12-2018	100%	100%	Cash

[68-101 Waialua Beach Road 201](#) - MLS#: [201815647](#) - A block from the beach and directly across from the Waialua bike path, this is the perfect two bedroom property for owner occupants and investors alike! Assigned parking and a rooftop deck with mountain and ocean views are just a few ideal features in this boutique building. Waialua is a desirable location for world-class surfing, snorkeling, skydiving, and polo. Just a few miles to historic Haleiwa Town. Spacious and breezy country living in a great location. The building is pet-friendly. **Region:** North Shore **Neighborhood:** Waialua **Condition:** Average **Parking:** Assigned **Total Parking:** 1 **View:** Coastline, Mountain, Ocean, Sunrise, Sunset **Frontage:** Other **Pool:** **Zoning:** 11 - A-1 Low Density Apartment **Sale Conditions:** None **Schools:** [Haleiwa](#), [Waialua](#), [Waialua](#) \* [Request Showing](#), [Photos](#), [History](#), [Maps](#), [Deed](#), [Watch List](#), [Tax Info](#)

DOM = Days on Market, Occ. = Occupancy, FL = Floor Number