

## **Meridian East 14 Aulike Street Unit 406, Kailua 96734 \* Meridian East \* \$498,000**

Sold Price: \$498,000

Sold Date: 08-08-2018

Sold Ratio: 100%

Beds: **2**

MLS#: **201816280, FS**

Year Built: **1967**

Bath: **1/1**

Status: **Sold**

Remodeled:

Living Sq. Ft.: **868**

List Date & DOM: **06-18-2018 & 14**

Total Parking: **1**

Land Sq. Ft.: **19,036**

Condition: **Above Average**

[Assessed Value](#)

Lanai Sq. Ft.: **80**

Frontage:

Building: **\$385,300**

Sq. Ft. Other: **0**

Tax/Year: **\$132/2018**

Land: **\$24,000**

Total Sq. Ft. **948**

Neighborhood: **Kailua Town**

Total: **\$409,300**

Maint./Assoc. **\$606 / \$0**

[Flood Zone](#): **Zone X - Tool**

Stories / CPR: **One / No**

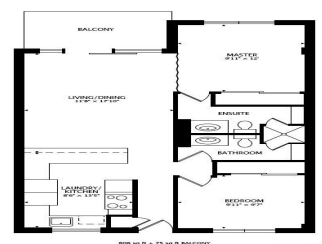
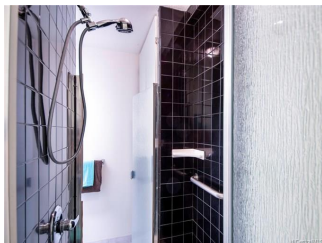
Parking: **Assigned, Covered - 1, Garage, Secured Entry**

Frontage:

[Zoning](#): **32 - B-2 Community Business Dis**

View: **City, Mountain**

**Public Remarks:** Clean, bright and well maintained, this 2BR/1.5BA offers a simple condo living in the heart of Kailua town. Located on the low and easy access 4th floor with tree top and an open sky views. Enjoy the efficient floor plan with a spacious open lanai features tile floors throughout, washer/dryer, new vinyl windows & lanai sliding glass door, a must see to appreciate. Meridian East is a pet friendly, well-maintained and secured residential condo building with short distances to Whole Foods, Target, Kailua Shopping Center, beautiful Kailua & Lanikai beaches, good eateries, boutique stores and many more essentials in the famous charming oceanside community of Kailua. View additional pictures and 360 tour with interactive floor plan at <http://bit.ly/MeridianEast406>. **Sale Conditions:** None **Schools:** [Kailua](#), [Kailua](#), [Kalaheo](#) \* [Request Showing](#), [Photos](#), [History](#), [Maps](#), [Deed](#), [Watch List](#), [Tax Info](#)





Address	Price	Bd & Bth	Living / Avg.	Land   Avg.	Lanai	Occ.	FL	DOM
<a href="#">14 Aulike Street 406</a>	<a href="#">\$498,000</a>	2 & 1/1	868   \$574	19,036   \$26	80	51%	2	14

Address	Tax   Maint.   Ass.	Assessed Land	Assessed Building	Assessed Total	Ratio	Year & Remodeled
<a href="#">14 Aulike Street 406</a>	\$132   \$606   \$0	\$24,000	\$385,300	\$409,300	122%	1967 & NA

Address	Sold Price	Sold Date	Sold Ratio	Original Ratio	Sold Terms
<a href="#">14 Aulike Street 406</a>	\$498,000	08-08-2018	100%	100%	VA

[14 Aulike Street 406](#) - MLS#: [201816280](#) - Clean, bright and well maintained, this 2BR/1.5BA offers a simple condo living in the heart of Kailua town. Located on the low and easy access 4th floor with tree top and an open sky views. Enjoy the efficient floor plan with a spacious open lanai features tile floors throughout, washer/dryer, new vinyl windows & lanai sliding glass door, a must see to appreciate. Meridian East is a pet friendly, well-maintained and secured residential condo building with short distances to Whole Foods, Target, Kailua Shopping Center, beautiful Kailua & Lanikai beaches, good eateries, boutique stores and many more essentials in the famous charming oceanside community of Kailua. View additional pictures and 360 tour with inter-active floor plan at <http://bit.ly/MeridianEast406>. **Region:** Kailua **Neighborhood:** Kailua Town **Condition:** Above Average **Parking:** Assigned, Covered - 1, Garage, Secured Entry **Total Parking:** 1 **View:** City, Mountain **Frontage:** **Pool:** **Zoning:** 32 - B-2 Community Business Dis **Sale Conditions:** None **Schools:** [Kailua](#), [Kailua](#), [Kalaheo](#) \* [Request Showing](#), [Photos](#), [History](#), [Maps](#), [Deed](#), [Watch List](#), [Tax Info](#)

DOM = Days on Market, Occ. = Occupancy, FL = Floor Number