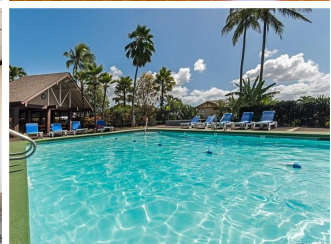
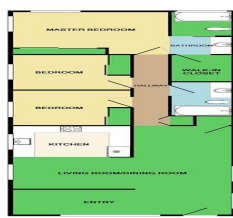


Wailuna 98-1788 Kaahumanu Street Unit 65D, Pearl City 96782 * Wailuna * \$610,000

Sold Price: \$605,000	Sold Date: 09-04-2018	Sold Ratio: 99%
Beds: 3	MLS#: 201816408, FS	Year Built: 1980
Bath: 2/0	Status: Sold	Remodeled: 2017
Living Sq. Ft.: 1,157	List Date & DOM: 06-25-2018 & 18	Total Parking: 2
Land Sq. Ft.: 472,365	Condition: Above Average, Excellent	Assessed Value
Lanai Sq. Ft.: 168	Frontage: Other	Building: \$250,900
Sq. Ft. Other: 0	Tax/Year: \$176/2018	Land: \$352,700
Total Sq. Ft. 1,325	Neighborhood: Wailuna	Total: \$603,600
Maint./Assoc. \$532 / \$63	Flood Zone : Zone D - Tool	Stories / CPR: Two / No
Parking: Assigned, Covered - 2, Garage, Guest, Street	Frontage: Other	
Zoning : 11 - A-1 Low Density Apartment	View: Mountain	

Public Remarks: Must see quick before it's gone! Townhouses like this do not come up very often and it won't last long. It's "Move in Ready". There's 1,325 sf of living space with 3 bedrooms and 2 baths. It's a D unit with a large 2 car garage with wet bar and no unit above. Upgrades include tastefully remodeled kitchen, upgraded bathrooms, new flooring, and more. You need to see this one to appreciate it. It's a very nice layout with good flow that make this perfect for entertaining. Master has a big bathroom, huge tub, and walk in closet. It's pet friendly and close to the rec center and pool. Wailuna is a very quiet complex, has fantastic amenities, and the central location is great for commuting with easy access to H-1. See our online tour and come visit our first public open house on 7/1 from 2-5pm. **Sale Conditions:** None **Schools:** [Waiau](#), [Highlands](#), [Pearl City](#)
 * [Request Showing](#), [Photos](#), [History](#), [Maps](#), [Deed](#), [Watch List](#), [Tax Info](#)





Address	Price	Bd & Bth	Living / Avg.	Land Avg.	Lanai	Occ.	FL	DOM
98-1788 Kaahumanu Street 65D	\$610,000	3 & 2/0	1,157 \$527	472,365 \$1	168	65%	2	18

Address	Tax Maint. Ass.	Assessed Land	Assessed Building	Assessed Total	Ratio	Year & Remodeled
98-1788 Kaahumanu Street 65D	\$176 \$532 \$63	\$352,700	\$250,900	\$603,600	101%	1980 & 2017

Address	Sold Price	Sold Date	Sold Ratio	Original Ratio	Sold Terms
98-1788 Kaahumanu Street 65D	\$605,000	09-04-2018	99%	99%	Conventional 500

[98-1788 Kaahumanu Street 65D](#) - MLS#: [201816408](#) - Must see quick before it's gone! Townhouses like this do not come up very often and it won't last long. It's "Move in Ready". There's 1,325 sf of living space with 3 bedrooms and 2 baths. It's a D unit with a large 2 car garage with wet bar and no unit above. Upgrades include tastefully remodeled kitchen, upgraded bathrooms, new flooring, and more. You need to see this one to appreciate it. It's a very nice layout with good flow that make this perfect for entertaining. Master has a big bathroom, huge tub, and walk in closet. It's pet friendly and close to the rec center and pool. Wailuna is a very quiet complex, has fantastic amenities, and the central location is great for commuting with easy access to H-1. See our online tour and come visit our first public open house on 7/1 from 2-5pm. **Region:** Pearl City **Neighborhood:** Wailuna **Condition:** Above Average, Excellent **Parking:** Assigned, Covered - 2, Garage, Guest, Street **Total Parking:** 2 **View:** Mountain **Frontage:** Other **Pool:** **Zoning:** 11 - A-1 Low Density Apartment **Sale Conditions:** None **Schools:** [Waiau](#), [Highlands](#), [Pearl City](#) * [Request Showing](#), [Photos](#), [History](#), [Maps](#), [Deed](#), [Watch List](#), [Tax Info](#)

DOM = Days on Market, Occ. = Occupancy, FL = Floor Number