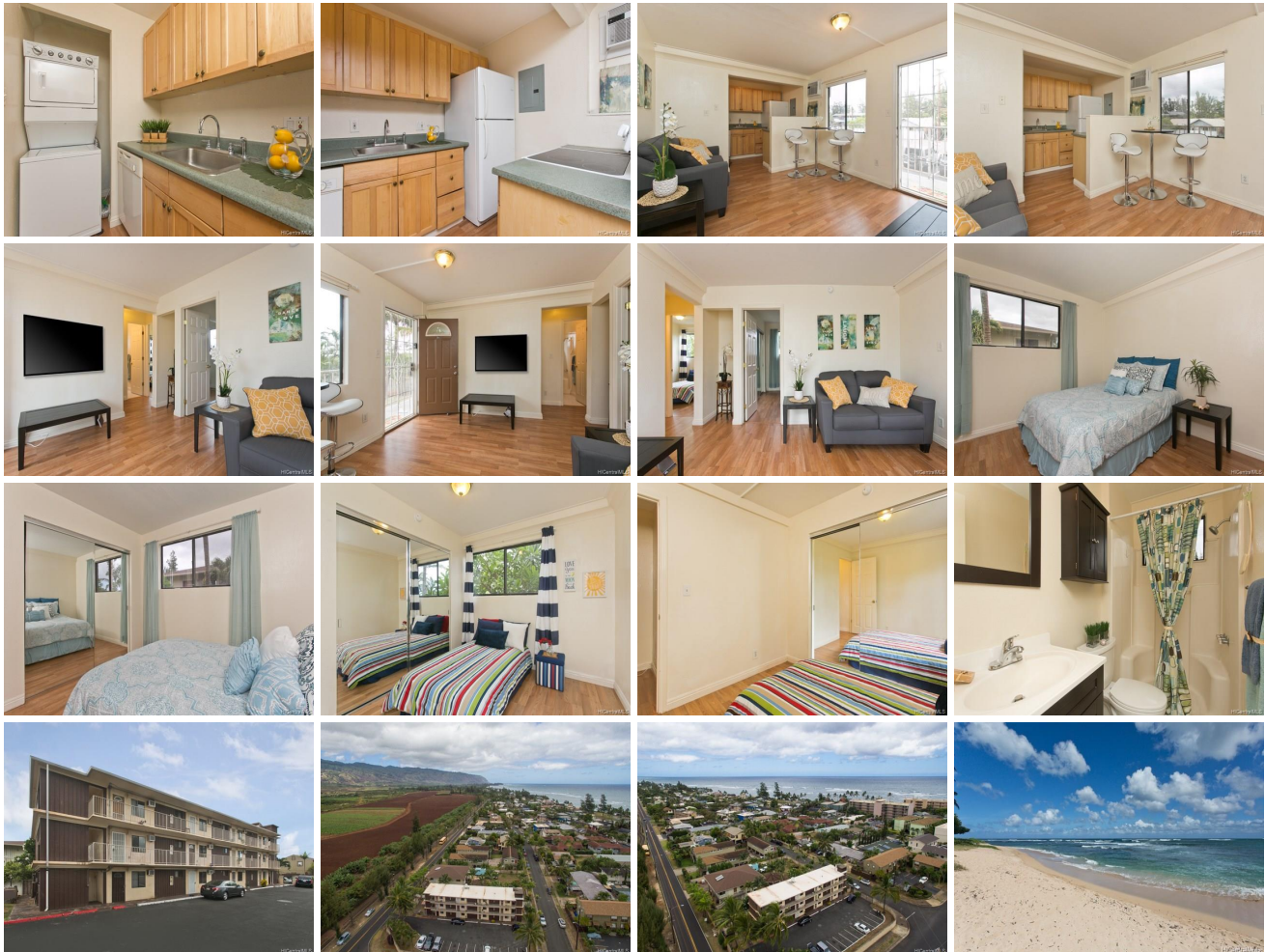


# **Mokuleia Shores 68-041 Waialua Beach Road Unit 201, Waialua 96791 \* Mokuleia Shores \***

**\$239,000**

Sold Price: \$237,000	Sold Date: 10-24-2018	Sold Ratio: 99%
Beds: <b>2</b>	MLS#: <b><u>201821378</u>, FS</b>	Year Built: <b>1975</b>
Bath: <b>1/0</b>	Status: <b>Sold</b>	Remodeled:
Living Sq. Ft.: <b>561</b>	List Date & DOM: <b>08-10-2018 &amp; 25</b>	Total Parking: <b>1</b>
Land Sq. Ft.: <b>0</b>	Condition: <b>Excellent</b>	<a href="#">Assessed Value</a>
Lanai Sq. Ft.: <b>0</b>	Frontage:	Building: <b>\$133,500</b>
Sq. Ft. Other: <b>0</b>	Tax/Year: <b>\$68/2018</b>	Land: <b>\$99,500</b>
Total Sq. Ft. <b>561</b>	Neighborhood: <b>Waialua</b>	Total: <b>\$233,000</b>
Maint./Assoc. <b>\$441 / \$0</b>	<a href="#">Flood Zone</a> : <b>Zone AE - Tool</b>	Stories / CPR: <b>Two / No</b>
Parking: <b>Assigned, Guest, Open - 1</b>	Frontage:	
<a href="#">Zoning</a> : <b>11 - A-1 Low Density Apartment</b>	View: <b>Mountain, Sunset</b>	

**Public Remarks:** Welcome Home to Oahu's North Shore! Opportunities like this do not come often so jump on your chance to live the dream with this updated beach get-away. Come see this 2-bedroom 1-bath 2nd floor unit that includes your own washer and dryer in the unit! Just 2 blocks from popular Aweoweo Beach Park, but away from the congestion. Tons of street parking, as this convenient location is just off Waialua Beach Road. Ceramic tile and laminate throughout. **Sale Conditions:** None **Schools:** [Waialua](#), [Waialua](#), [Waialua](#) \* [Request Showing](#), [Photos](#), [History](#), [Maps](#), [Deed](#), [Watch List](#), [Tax Info](#)



Address	Price	Bd & Bth	Living / Avg.	Land   Avg.	Lanai	Occ.	FL	DOM
<a href="#">68-041 Waialua Beach Road 201</a>	<a href="#">\$239,000</a>	2 & 1/0	561   \$426	0   \$inf	0	50%	2	25

Address	Tax   Maint.   Ass.	Assessed Land	Assessed Building	Assessed Total	Ratio	Year & Remodeled
<a href="#">68-041 Waialua Beach Road 201</a>	\$68   \$441   \$0	\$99,500	\$133,500	\$233,000	103%	1975 & NA

Address	Sold Price	Sold Date	Sold Ratio	Original Ratio	Sold Terms
<a href="#">68-041 Waialua Beach Road 201</a>	\$237,000	10-24-2018	99%	99%	USDA Financing

[68-041 Waialua Beach Road 201](#) - MLS#: [201821378](#) - Welcome Home to Oahu's North Shore! Opportunities like this do not come often so jump on your chance to live the dream with this updated beach get-away. Come see this 2-bedroom 1-bath 2nd floor unit that includes your own washer and dryer in the unit! Just 2 blocks from popular Aweoweo Beach Park, but away from the congestion. Tons of street parking, as this convenient location is just off Waialua Beach Road. Ceramic tile and laminate throughout. **Region:** North Shore **Neighborhood:** Waialua **Condition:** Excellent **Parking:** Assigned, Guest, Open - 1 **Total Parking:** 1 **View:** Mountain, Sunset **Frontage:** Pool: **Zoning:** 11 - A-1 Low Density Apartment **Sale Conditions:** None **Schools:** [Waialua](#), [Waialua](#), [Waialua](#) \* [Request Showing](#), [Photos](#), [History](#), [Maps](#), [Deed](#), [Watch List](#), [Tax Info](#)

DOM = Days on Market, Occ. = Occupancy, FL = Floor Number