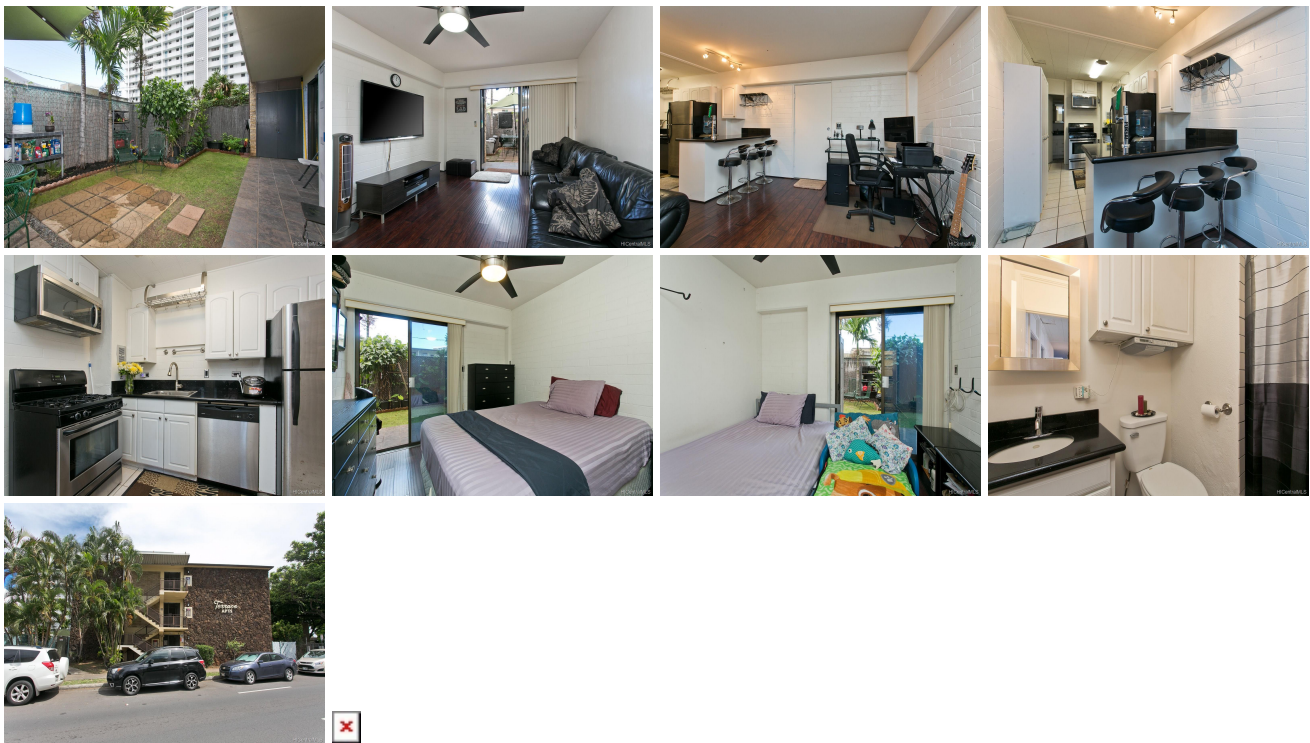


## **Terrace Apts 2450 Date Street Unit 8, Honolulu 96826 \* Terrace Apts \* \$325,000**

Sold Price: \$353,000	Sold Date: 12-18-2018	Sold Ratio: 109%
Beds: <b>2</b>	MLS#: <b>201827758, FS</b>	Year Built: <b>1960</b>
Bath: <b>1/0</b>	Status: <b>Sold</b>	Remodeled:
Living Sq. Ft.: <b>704</b>	List Date & DOM: <b>10-19-2018 &amp; 7</b>	Total Parking: <b>1</b>
Land Sq. Ft.: <b>19,471</b>	Condition: <b>Above Average</b>	<a href="#">Assessed Value</a>
Lanai Sq. Ft.: <b>0</b>	Frontage:	Building: <b>\$236,600</b>
Sq. Ft. Other: <b>0</b>	Tax/Year: <b>\$78/2018</b>	Land: <b>\$111,100</b>
Total Sq. Ft. <b>704</b>	Neighborhood: <b>Moiliili</b>	Total: <b>\$347,700</b>
Maint./Assoc. <b>\$600 / \$0</b>	<a href="#">Flood Zone</a> : <b>Zone X - Tool</b>	Stories / CPR: / <b>No</b>
Parking: <b>Assigned, Open - 1</b>	Frontage:	
<a href="#">Zoning</a> : <b>12 - A-2 Medium Density Apartme</b>	View: <b>None</b>	

**Public Remarks:** Fabulous corner-end, ground floor unit with patio space with easy street access to store your personal items such as: surf boards, bikes, strollers, and much much more. Imagine being in such proximity to grocery stores, Ala Wai Golf Course, bike lanes, Waikiki and its wonderful beaches and restaurants. This well-kept and renovated 2-bd unit with stainless steal appliances, upgraded laminate flooring, and fans is ready for you to call it home. **Sale Conditions:** None  
**Schools:** [Kuhio](#), [Washington](#), [Kaimuki](#) \* [Request Showing](#), [Photos](#), [History](#), [Maps](#), [Deed](#), [Watch List](#), [Tax Info](#)



Address	Price	Bd & Bth	Living / Avg.	Land   Avg.	Lanai	Occ.	FL	DOM
<a href="#">2450 Date Street 8</a>	<a href="#">\$325,000</a>	2 & 1/0	704   462	19,471   17	0	42%	1	7

Address	Tax   Maint.   Ass.	Assessed Land	Assessed Building	Assessed Total	Ratio	Year & Remodeled
<a href="#">2450 Date Street 8</a>	\$78   \$600   \$0	\$111,100	\$236,600	\$347,700	93%	1960 & NA

Address	Sold Price	Sold Date	Sold Ratio	Original Ratio	Sold Terms
<a href="#">2450 Date Street 8</a>	\$353,000	12-18-2018	109%	109%	Conventional

**2450 Date Street 8** - MLS#: **201827758** - Fabulous corner-end, ground floor unit with patio space with easy street access to store your personal items such as: surf boards, bikes, strollers, and much much more. Imagine being in such proximity to grocery stores, Ala Wai Golf Course, bike lanes, Waikiki and its wonderful beaches and restaurants. This well-kept and renovated 2-bd unit with stainless steal appliances, upgraded laminate flooring, and fans is ready for you to call it home. **Region:** Metro **Neighborhood:** Moiliili **Condition:** Above Average **Parking:** Assigned, Open - 1 **Total Parking:** 1 **View:** None **Frontage:** **Pool:** **Zoning:** 12 - A-2 Medium Density Apartme **Sale Conditions:** None **Schools:** [Kuhio](#), [Washington](#), [Kaimuki](#) \* [Request Showing](#), [Photos](#), [History](#), [Maps](#), [Deed](#), [Watch List](#), [Tax Info](#)

DOM = Days on Market, Occ. = Occupancy, FL = Floor Number