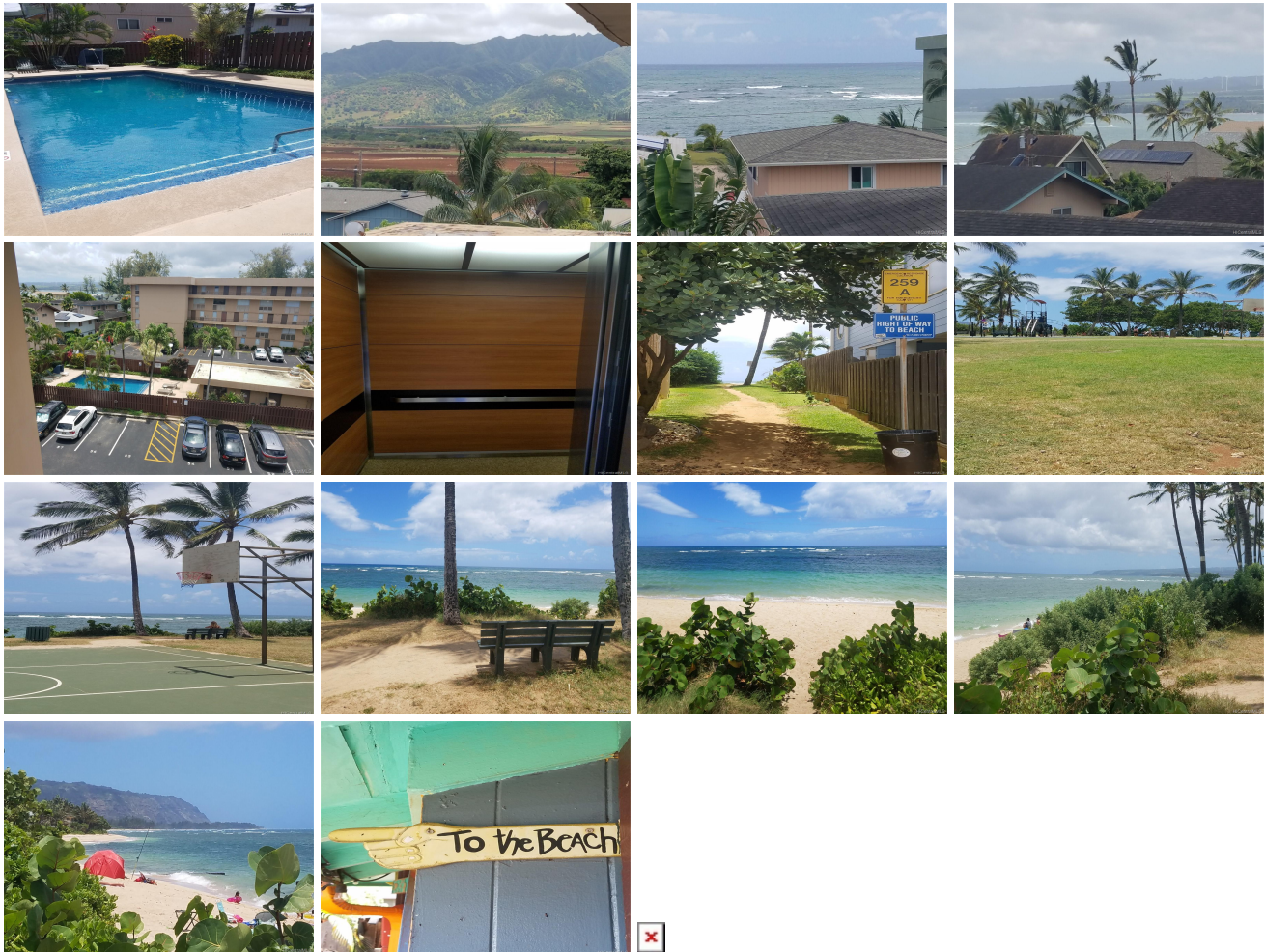


Ono Vista 68-090 Au Street Unit 511W, Waialua 96791 * Ono Vista * \$399,000

Sold Price: \$392,500	Sold Date: 11-21-2018	Sold Ratio: 98%
Beds: 2	MLS#: 201829628, FS	Year Built: 1975
Bath: 1/0	Status: Sold	Remodeled:
Living Sq. Ft.: 788	List Date & DOM: 11-16-2018 &	Total Parking: 1
Land Sq. Ft.: 51,662	Condition: Average	Assessed Value
Lanai Sq. Ft.: 76	Frontage: Other	Building: \$297,300
Sq. Ft. Other: 0	Tax/Year: \$98/2017	Land: \$69,400
Total Sq. Ft. 864	Neighborhood: Waialua	Total: \$366,700
Maint./Assoc. \$727 / \$0	Flood Zone : Zone VE - Tool	Stories / CPR: Split Level / No
Parking: Assigned, Open - 1	Frontage: Other	
Zoning : 12 - A-2 Medium Density Apartme	View: Garden, Mountain	

Public Remarks: Ono Vista condo is favored by many. A beautiful sandy beach-ocean across the way with beach access. Let the sound of waves lull you to sleep at night. Swimming, stand up paddling, surfing, and more is at your fingertips. Picnic at a grassy park before you dive into the blue ocean. The North Shore of Oahu is an established community. Grocery, shopping, and offices closeby. Unit includes your own washer/dryer. Relax or dine on your spacious balcony with breathtaking views and breezes. Your opportunity to create and design your own finishes in this private near corner unit. Make it your dream come true in Hawaii! **Sale Conditions:** None **Schools:** [Waialua](#), [Waialua](#), [Waialua](#) * [Request Showing](#), [Photos](#), [History](#), [Maps](#), [Deed](#), [Watch List](#), [Tax Info](#)



Address	Price	Bd & Bth	Living / Avg.	Land Avg.	Lanai	Occ.	FL	DOM
68-090 Au Street 511W	\$399,000	2 & 1/0	788 \$506	51,662 \$8	76	44%	3	0

Address	Tax Maint. Ass.	Assessed Land	Assessed Building	Assessed Total	Ratio	Year & Remodeled
68-090 Au Street 511W	\$98 \$727 \$0	\$69,400	\$297,300	\$366,700	109%	1975 & NA

Address	Sold Price	Sold Date	Sold Ratio	Original Ratio	Sold Terms
68-090 Au Street 511W	\$392,500	11-21-2018	98%	98%	Conventional

[68-090 Au Street 511W](#) - MLS#: [201829628](#) - Ono Vista condo is favored by many. A beautiful sandy beach-ocean across the way with beach access. Let the sound of waves lull you to sleep at night. Swimming, stand up paddling, surfing, and more is at your fingertips. Picnic at a grassy park before you dive into the blue ocean. The North Shore of Oahu is an established community. Grocery, shopping, and offices closeby. Unit includes your own washer/dryer. Relax or dine on your spacious balcony with breathtaking views and breezes. Your opportunity to create and design your own finishes in this private near corner unit. Make it your dream come true in Hawaii! **Region:** North Shore **Neighborhood:** Waialua **Condition:** Average **Parking:** Assigned, Open - 1 **Total Parking:** 1 **View:** Garden, Mountain **Frontage:** Other **Pool:** **Zoning:** 12 - A-2 Medium Density Apartme **Sale Conditions:** None **Schools:** [Waialua](#), [Waialua](#), [Waialua](#) * [Request Showing](#), [Photos](#), [History](#), [Maps](#), [Deed](#), [Watch List](#), [Tax Info](#)

DOM = Days on Market, Occ. = Occupancy, FL = Floor Number