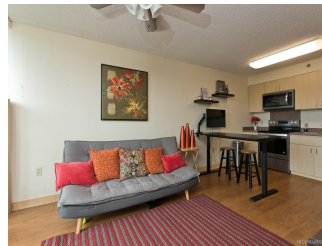


Plantation Town Apartments 94-979 Kauolu Place Unit 1210, Waipahu 96797 * Plantation Town Apartments * \$250,000

Sold Price: \$250,000	Sold Date: 12-27-2018	Sold Ratio: 100%
Beds: 1	MLS#: 201829832, FS	Year Built: 2007
Bath: 1/0	Status: Sold	Remodeled:
Living Sq. Ft.: 444	List Date & DOM: 11-19-2018 & 10	Total Parking: 1
Land Sq. Ft.: 0	Condition: Above Average, Excellent	Assessed Value
Lanai Sq. Ft.: 0	Frontage: Other	Building: \$193,200
Sq. Ft. Other: 0	Tax/Year: \$20/2018	Land: \$24,600
Total Sq. Ft. 444	Neighborhood: Waipahu-lower	Total: \$217,800
Maint./Assoc. \$301 / \$0	Flood Zone : Zone X - Tool	Stories / CPR: 8-14 / No
Parking: Assigned, Guest, Open - 1	Frontage: Other	
Zoning : 05 - R-5 Residential District	View: Mountain	

Public Remarks: Wonderful move in ready 1 bed/1 bath/1 parking, top floor and mountain view unit in desirable Plantation Town Apartments. Building is 11 years old, well maintained and manicured, secured, 24 hour security, pet friendly, low maintenance fees (\$300.65), visitor stalls and own courtyard and recreation center to enjoy with family and friends. Near bus stop, future rail and transit station, freeway access, schools, shopping centers and medical offices. Includes brand new stainless steel appliances installed in October 2018, laminate flooring throughout, updated ceiling fans, garbage disposal, new mirrors, AC and washer/dryer and end stall parking (#162). MUST SEE for first time buyers, investors, retirees or thinking of downsizing. First open house this Sunday, 11-25-18 from 2-5pm. **Sale Conditions:** None **Schools:** [August Ahrens](#), [Waipahu](#), [Waipahu](#) * [Request Showing](#), [Photos](#), [History](#), [Maps](#), [Deed](#), [Watch List](#), [Tax Info](#)



Address	Price	Bd & Bth	Living / Avg.	Land Avg.	Lanai	Occ.	FL	DOM
94-979 Kauolu Place 1210	\$250,000	1 & 1/0	444 \$563	0 \$inf	0	73%	12	10

Address	Tax Maint. Ass.	Assessed Land	Assessed Building	Assessed Total	Ratio	Year & Remodeled
94-979 Kauolu Place 1210	\$20 \$301 \$0	\$24,600	\$193,200	\$217,800	115%	2007 & NA

Address	Sold Price	Sold Date	Sold Ratio	Original Ratio	Sold Terms
94-979 Kauolu Place 1210	\$250,000	12-27-2018	100%	100%	VA

[94-979 Kauolu Place 1210](#) - MLS#: [201829832](#) - Wonderful move in ready 1 bed/1 bath/1 parking, top floor and mountain view unit in desirable Plantation Town Apartments. Building is 11 years old, well maintained and manicured, secured, 24 hour security, pet friendly, low maintenance fees (\$300.65), visitor stalls and own courtyard and recreation center to enjoy with family and friends. Near bus stop, future rail and transit station, freeway access, schools, shopping centers and medical offices. Includes brand new stainless steel appliances installed in October 2018, laminate flooring throughout, updated ceiling fans, garbage disposal, new mirrors, AC and washer/dryer and end stall parking (#162). MUST SEE for first time buyers, investors, retirees or thinking of downsizing. First open house this Sunday, 11-25-18 from 2-5pm. **Region:** Waipahu **Neighborhood:** Waipahu-lower **Condition:** Above Average, Excellent **Parking:** Assigned, Guest, Open - 1 **Total Parking:** 1 **View:** Mountain **Frontage:** Other **Pool:** **Zoning:** 05 - R-5 Residential District **Sale Conditions:** None **Schools:** [August Ahrens](#), [Waipahu](#), [Waipahu](#) * [Request Showing](#), [Photos](#), [History](#), [Maps](#), [Deed](#), [Watch List](#), [Tax Info](#)

DOM = Days on Market, Occ. = Occupancy, FL = Floor Number