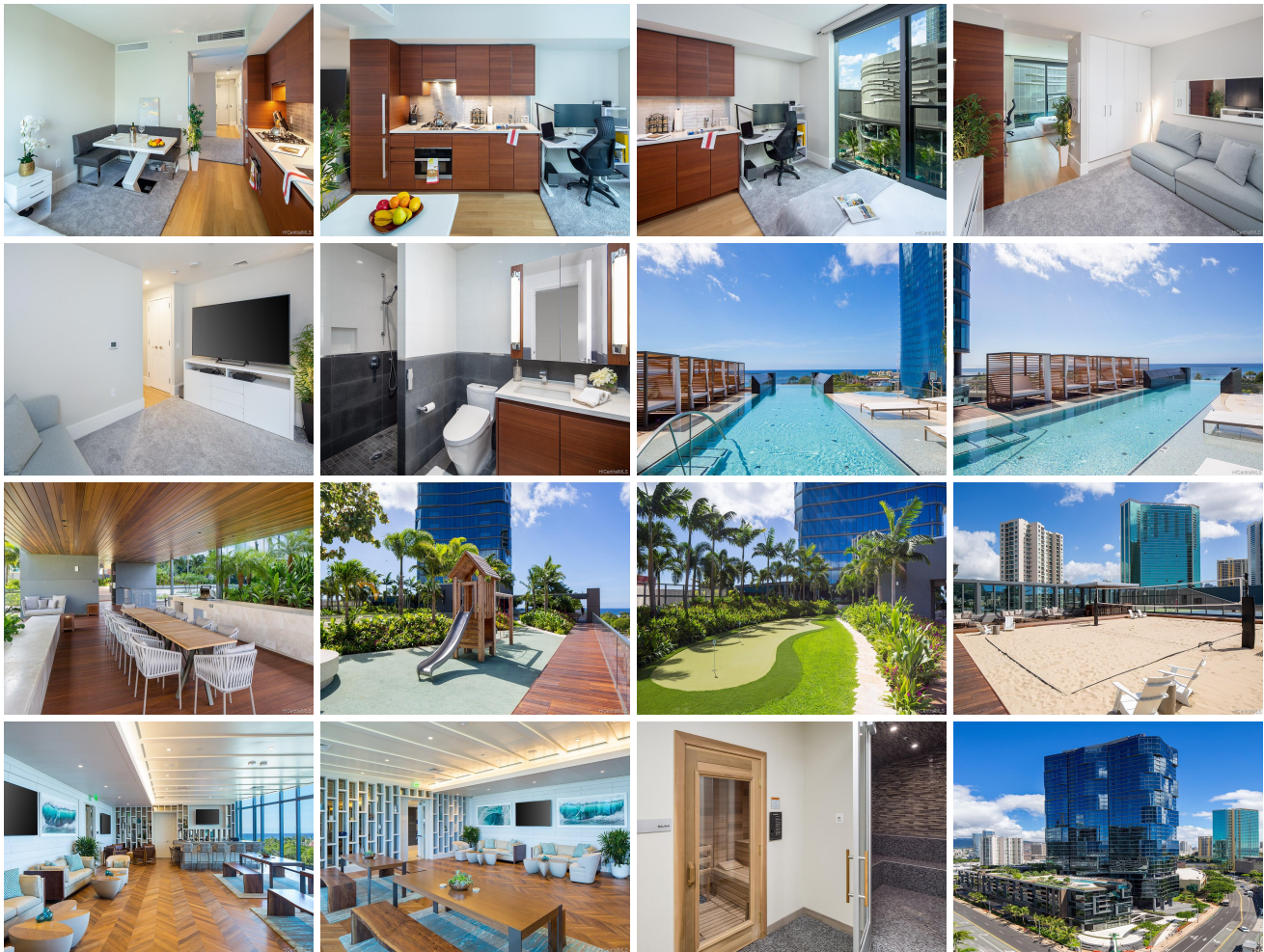


# Anaha - 1108 Auahi 1108 Auahi Street Unit 412, Honolulu 96814 \* Anaha - 1108 Auahi \*

**\$759,000**

Sold Price: \$733,000	Sold Date: 03-08-2019	Sold Ratio: 97%
Beds: <b>0</b>	MLS#: <b>201830936, FS</b>	Year Built: <b>2017</b>
Bath: <b>1/0</b>	Status: <b>Sold</b>	Remodeled:
Living Sq. Ft.: <b>434</b>	List Date & DOM: <b>12-10-2018 &amp; 53</b>	Total Parking: <b>1</b>
Land Sq. Ft.: <b>0</b>	Condition: <b>Excellent</b>	<a href="#">Assessed Value</a>
Lanai Sq. Ft.: <b>0</b>	Frontage:	Building: <b>\$282,200</b>
Sq. Ft. Other: <b>0</b>	Tax/Year: <b>\$76/2018</b>	Land: <b>\$19,400</b>
Total Sq. Ft. <b>434</b>	Neighborhood: <b>Kakaako</b>	Total: <b>\$301,600</b>
Maint./Assoc. <b>\$489 / \$0</b>	<a href="#">Flood Zone</a> : <b>Zone AE - Tool</b>	Stories / CPR: <b>21+ / No</b>
Parking: <b>Assigned, Covered - 1, Guest, Secured Entry</b>	Frontage:	
<a href="#">Zoning</a> : <b>Kak - Kakaako Community Development Project</b>	View: <b>City, Ocean</b>	

**Public Remarks:** Rarely available studio in Anaha, one of Honolulu's newest buildings! Enjoy all the luxurious amenities that Anaha has to offer at a fraction of the price...relatively low HOAs & property taxes, electricity only \$50/month. This well-maintained studio boasts 9 ft high ceilings (making it seem larger than most studios), Miele appliances, quartz countertops, hardwood flooring, motorized blinds, gas cooktop & European cabinetry. Space efficiently maximized with room divider/closet. Resort-like amenities include an infinity pool, BBQs, putting green, gym, movie theater, screen golf simulator, sauna and concierge services. With slightly over 300 units, building feels very serene. Walking distance to Ala Moana Beach Park, Whole Foods, Ala Moana Shopping Center, restaurants & entertainment. **Sale Conditions:** None **Schools:** [Kaahumanu](#), [Central](#), [Mckinley](#) \* [Request Showing](#), [Photos](#), [History](#), [Maps](#), [Deed](#), [Watch List](#), [Tax Info](#)



Address	Price	Bd & Bth	Living / Avg.	Land   Avg.	Lanai	Occ.	FL	DOM
<a href="#">1108 Auahi Street 412</a>	<a href="#">\$759,000</a>	0 & 1/0	434   \$1,749	0   \$inf	0	50%	4	53

Address	Tax   Maint.   Ass.	Assessed Land	Assessed Building	Assessed Total	Ratio	Year & Remodeled
<a href="#">1108 Auahi Street 412</a>	\$76   \$489   \$0	\$19,400	\$282,200	\$301,600	252%	2017 & NA

Address	Sold Price	Sold Date	Sold Ratio	Original Ratio	Sold Terms
<a href="#">1108 Auahi Street 412</a>	\$733,000	03-08-2019	97%	97%	Cash

[1108 Auahi Street 412](#) - MLS#: [201830936](#) - Rarely available studio in Anaha, one of Honolulu's newest buildings! Enjoy all the luxurious amenities that Anaha has to offer at a fraction of the price...relatively low HOAs & property taxes, electricity only \$50/month. This well-maintained studio boasts 9 ft high ceilings (making it seem larger than most studios), Miele appliances, quartz countertops, hardwood flooring, motorized blinds, gas cooktop & European cabinetry. Space efficiently maximized with room divider/closet. Resort-like amenities include an infinity pool, BBQs, putting green, gym, movie theater, screen golf simulator, sauna and concierge services. With slightly over 300 units, building feels very serene. Walking distance to Ala Moana Beach Park, Whole Foods, Ala Moana Shopping Center, restaurants & entertainment. **Region:** Metro **Neighborhood:** Kakaako **Condition:** Excellent **Parking:** Assigned, Covered - 1, Guest, Secured Entry **Total Parking:** 1 **View:** City, Ocean **Frontage:** **Pool:** **Zoning:** Kak - Kakaako Community Development Project **Sale Conditions:** None **Schools:** [Kaahumanu](#), [Central](#), [Mckinley](#) \* [Request Showing](#), [Photos](#), [History](#), [Maps](#), [Deed](#), [Watch List](#), [Tax Info](#)

DOM = Days on Market, Occ. = Occupancy, FL = Floor Number