

**Poha Kea Point 3 46-159 Meheanu Loop Unit 3258, Kaneohe 96744 \* Poha Kea Point 3 \***

**\$649,000**

Beds: **2**  
Bath: **2/0**  
Living Sq. Ft.: **896**  
Land Sq. Ft.: **669,517**  
Lanai Sq. Ft.: **129**  
Sq. Ft. Other: **0**  
Total Sq. Ft. **1,025**  
Maint./Assoc. **\$783 / \$0**

MLS#: **201900414, FS**  
Status: **Cancelled**  
List Date & DOM: **01-05-2019 & 68**  
Condition: **Excellent**  
Frontage:  
Tax/Year: **\$146/2019**  
Neighborhood: **Lilipuna**  
**Flood Zone: Zone X - Tool**

Year Built: **1986**  
Remodeled: **2018**  
Total Parking: **2**  
[Assessed Value](#)  
Building: **\$360,500**  
Land: **\$220,600**  
Total: **\$581,100**  
Stories / CPR: / **No**

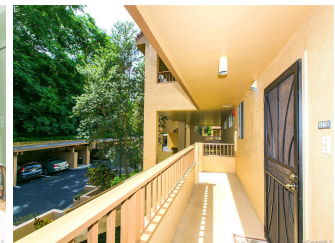
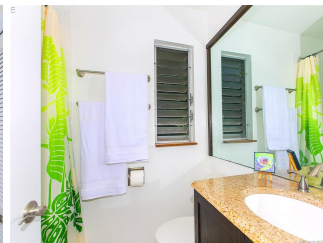
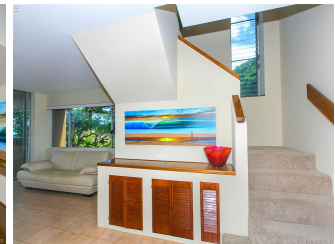
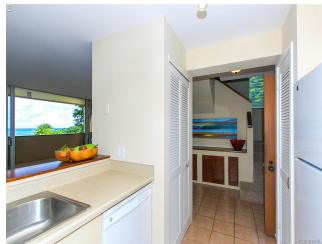
Parking: **Assigned, Carport, Covered - 1,  
Guest, Open - 1**

Frontage:

**Zoning: 03 - R10 - Residential District**

View: **Garden, Mountain, Ocean, Sunrise,  
Sunset**

**Public Remarks:** PENTHOUSE UNIT WITH SIGNIFICANT PRICE REDUCTION! Welcome to Poha Kea Point, the most beautiful development overlooking Kaneohe Bay. Rarely available, this newly renovated 2 bedroom, 2 bath, 2 parking stall Penthouse corner unit enjoys a commanding view of the Sandbars, Chinaman's Hat, and the Koolau's. Additionally, its private entrance and stairway afford this unit extra privacy and convenience. Poha Kea Point offers spacious grounds, beautiful landscaping, three pools, tennis courts, BBQs and recreational facilities for entertaining, 24/7 security, and is pet friendly. In addition to being walking distance from Windward Mall, grocery stores, and restaurants, Likelike, H3, and the Pali are all easily accessible. This unit is priced to go quickly, so make your appointment today! **Sale Conditions:** None **Schools:** [Heeiea](#), [King, Castle](#) \* [Request Showing](#), [Photos](#), [History](#), [Maps](#), [Deed](#), [Watch List](#), [Tax Info](#)





Address	Price	Bd & Bth	Living / Avg.	Land   Avg.	Lanai	Occ.	FL	DOM
<a href="#">46-159 Meheanu Loop 3258</a>	<a href="#">\$649,000</a>	2 & 2/0	896   \$724	669,517   \$1	129	63%	6	68

Address	Tax   Maint.   Ass.	Assessed Land	Assessed Building	Assessed Total	Ratio	Year & Remodeled
<a href="#">46-159 Meheanu Loop 3258</a>	\$146   \$783   \$0	\$220,600	\$360,500	\$581,100	112%	1986 & 2018

[46-159 Meheanu Loop 3258](#) - MLS#: [201900414](#) - PENTHOUSE UNIT WITH SIGNIFICANT PRICE REDUCTION! Welcome to Poha Kea Point, the most beautiful development overlooking Kaneohe Bay. Rarely available, this newly renovated 2 bedroom, 2 bath, 2 parking stall Penthouse corner unit enjoys a commanding view of the Sandbars, Chinaman's Hat, and the Koolau's. Additionally, its private entrance and stairway afford this unit extra privacy and convenience. Poha Kea Point offers spacious grounds, beautiful landscaping, three pools, tennis courts, BBQs and recreational facilities for entertaining, 24/7 security, and is pet friendly. In addition to being walking distance from Windward Mall, grocery stores, and restaurants, Likelike, H3, and the Pali are all easily accessible. This unit is priced to go quickly, so make your appointment today! **Region:** Kaneohe  
**Neighborhood:** Lilipuna **Condition:** Excellent **Parking:** Assigned, Carport, Covered - 1, Guest, Open - 1 **Total Parking:** 2  
**View:** Garden, Mountain, Ocean, Sunrise, Sunset **Frontage:** **Pool:** **Zoning:** 03 - R10 - Residential District **Sale Conditions:** None **Schools:** [Heeia](#), [King](#), [Castle](#) \* [Request Showing](#), [Photos](#), [History](#), [Maps](#), [Deed](#), [Watch List](#), [Tax Info](#)

DOM = Days on Market, Occ. = Occupancy, FL = Floor Number