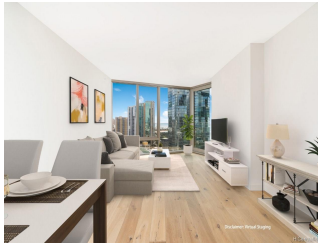


**Ae'o 1001 Queen Street Unit 2202, Honolulu 96814 \* Ae'o \* \$1,460,000 \* Originally \$1,560,000**

Beds: <b>2</b>	MLS#: <b>201901130, FS</b>	Year Built: <b>2018</b>
Bath: <b>2/0</b>	Status: <b>Expired</b>	Remodeled:
Living Sq. Ft.: <b>983</b>	List Date & DOM: <b>01-16-2019 &amp; 349</b>	Total Parking: <b>2</b>
Land Sq. Ft.: <b>0</b>	Condition: <b>Excellent</b>	<a href="#">Assessed Value</a>
Lanai Sq. Ft.: <b>0</b>	Frontage:	Building: <b>\$88,700</b>
Sq. Ft. Other: <b>0</b>	Tax/Year: <b>\$114/2018</b>	Land: <b>\$64,000</b>
Total Sq. Ft. <b>983</b>	Neighborhood: <b>Kakaako</b>	Total: <b>\$152,700</b>
Maint./Assoc. <b>\$744 / \$0</b>	<a href="#">Flood Zone</a> : <b>Zone AE - Tool</b>	Stories / CPR: <b>21+ / No</b>
Parking: <b>Assigned, Covered - 2, Tandem</b>	Frontage:	
<a href="#">Zoning</a> : <b>Kak - Kakaako Community Development Project</b>	View: <b>City, Coastline, Ocean</b>	

**Public Remarks:** Ae'o offers exceptional amenities for those who want to live the ultimate modern Hawaiian lifestyle with an unprecedented level of amenities and is conveniently connected to Hawaii's flagship Whole Foods Market. Residents experience the best of urban living in the heart of Ward Village in the most sought-after Kakaako neighborhood. Preferred 02 stack with upgraded wood flooring, south east facing 2 bedroom and 2 baths unit with ocean/park/harbor view, thoughtfully designed with meticulous attention to detail. Floor-to-ceiling windows provide ample light and create a feeling of openness. Top quality European fixtures and fittings provide a stunning aesthetic statement, but are also designed for convenience and ease of use. **Sale Conditions:** None **Schools:** [Kaahumanu](#), [Stevenson](#), [Mckinley](#) \* [Request Showing](#), [Photos](#), [History](#), [Maps](#), [Deed](#), [Watch List](#), [Tax Info](#)



Address	Price	Bd & Bth	Living / Avg.	Land   Avg.	Lanai	Occ.	FL	DOM
<a href="#">1001 Queen Street 2202</a>	<b>\$1,460,000</b>	2 & 2/0	983   \$1,485	0   \$inf	0	0%	22	349

Address	Tax   Maint.   Ass.	Assessed Land	Assessed Building	Assessed Total	Ratio	Year & Remodeled
<a href="#">1001 Queen Street 2202</a>	\$114   \$744   \$0	\$64,000	\$88,700	\$152,700	956%	2018 & NA

[1001 Queen Street 2202](#) - MLS#: [201901130](#) - Original price was \$1,560,000 - Ae'o offers exceptional amenities for those who want to live the ultimate modern Hawaiian lifestyle with an unprecedented level of amenities and is conveniently connected to Hawaii's flagship Whole Foods Market. Residents experience the best of urban living in the heart of Ward Village in the most sought-after Kakaako neighborhood. Preferred 02 stack with upgraded wood flooring, south east facing 2 bedroom and 2 baths unit with ocean/park/harbor view, thoughtfully designed with meticulous attention to detail. Floor-to-ceiling windows provide ample light and create a feeling of openness. Top quality European fixtures and fittings provide a stunning aesthetic statement, but are also designed for convenience and ease of use. **Region:** Metro **Neighborhood:** Kakaako **Condition:** Excellent **Parking:** Assigned, Covered - 2, Tandem **Total Parking:** 2 **View:** City, Coastline, Ocean **Frontage:** **Pool:** **Zoning:** Kak - Kakaako Community Development Project **Sale Conditions:** None **Schools:** [Kaahumanu](#), [Stevenson](#), [Mckinley](#) \* [Request Showing](#), [Photos](#), [History](#), [Maps](#), [Deed](#), [Watch List](#), [Tax Info](#)

DOM = Days on Market, Occ. = Occupancy, FL = Floor Number