

## **Hikino 2 94-1088 Paawalu Street Unit R5, Waipahu 96797 \* Hikino 2 \* \$390,000**

Sold Price: \$385,000

Beds: **2**

Bath: **1/0**

Living Sq. Ft.: **716**

Land Sq. Ft.: **109,066**

Lanai Sq. Ft.: **72**

Sq. Ft. Other: **0**

Total Sq. Ft. **788**

Maint./Assoc. **\$411 / \$12**

Parking: **Assigned, Guest**

**Zoning: 11 - A-1 Low Density Apartment**

Sold Date: 03-14-2019

MLS#: **201901435, FS**

Status: **Sold**

List Date & DOM: **01-21-2019 & 9**

Condition: **Excellent**

Frontage:

Tax/Year: **\$97/2018**

Neighborhood: **Waipio Gentry**

**Flood Zone: Zone D - Tool**

Frontage:

View: **Mountain**

Sold Ratio: 99%

Year Built: **1985**

Remodeled: **2017**

Total Parking: **1**

[Assessed Value](#)

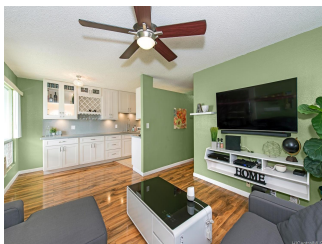
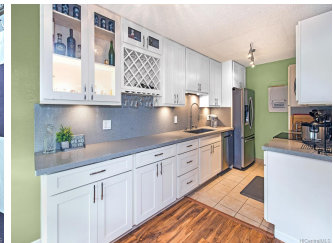
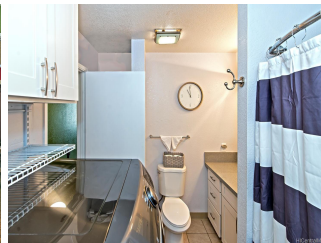
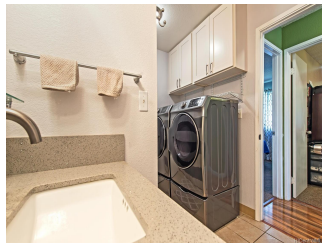
Building: **\$173,700**

Land: **\$160,300**

Total: **\$334,000**

Stories / CPR: **Two / No**

**Public Remarks:** Impressive contemporary kitchen remodel and expansion of kitchen space! New Samsung appliances (Refrigerator, Oven/Range, Microwave hood, Dishwasher & Washer/Dryer) 4yr warranties can be transferred to new owner. Wood laminate flooring in living areas, plus tiled flooring, make it easy to clean and maintain. Freshly painted. Corner, end unit with 1 parking in front of home. Guest parking available. Pet friendly! Easy access to all the major Freeways. Costco, Foodland, shops and restaurants close by. Great location, in the quieter part of Waipio, next to Waipio Neighborhood Park with tennis, basketball courts and a baseball diamond **Sale Conditions:** None **Schools:** [Kanoelani](#), [Highlands](#), [Pearl City](#) \* [Request Showing](#), [Photos](#), [History](#), [Maps](#), [Deed](#), [Watch List](#), [Tax Info](#)





Address	Price	Bd & Bth	Living / Avg.	Land   Avg.	Lanai	Occ.	FL	DOM
<a href="#">94-1088 Paawalu Street R5</a>	<a href="#">\$390,000</a>	2 & 1/0	716   \$545	109,066   \$4	72	48%	2	9

Address	Tax   Maint.   Ass.	Assessed Land	Assessed Building	Assessed Total	Ratio	Year & Remodeled
<a href="#">94-1088 Paawalu Street R5</a>	\$97   \$411   \$12	\$160,300	\$173,700	\$334,000	117%	1985 & 2017

Address	Sold Price	Sold Date	Sold Ratio	Original Ratio	Sold Terms
<a href="#">94-1088 Paawalu Street R5</a>	\$385,000	03-14-2019	99%	99%	Conventional

<p><a href="#">94-1088 Paawalu Street R5</a> - MLS#: <a href="#">201901435</a> - Impressive contemporary kitchen remodel and expansion of kitchen space! New Samsung appliances (Refrigerator, Oven/Range, Microwave hood, Dishwasher &amp; Washer/Dryer) 4yr warranties can be transferred to new owner. Wood laminate flooring in living areas, plus tiled flooring, make it easy to clean and maintain. Freshly painted. Corner, end unit with 1 parking in front of home. Guest parking available. Pet friendly! Easy access to all the major Freeways. Costco, Foodland, shops and restaurants close by. Great location, in the quieter part of Waipio, next to Waipio Neighborhood Park with tennis, basketball courts and a baseball diamond <b>Region:</b> Waipahu <b>Neighborhood:</b> Waipio Gentry <b>Condition:</b> Excellent <b>Parking:</b> Assigned, Guest <b>Total Parking:</b> 1 <b>View:</b> Mountain <b>Frontage:</b> <b>Pool:</b> <b>Zoning:</b> 11 - A-1 Low Density Apartment <b>Sale Conditions:</b> None <b>Schools:</b> <a href="#">Kanoelani</a>, <a href="#">Highlands</a>, <a href="#">Pearl City</a> * <a href="#">Request Showing</a>, <a href="#">Photos</a>, <a href="#">History</a>, <a href="#">Maps</a>, <a href="#">Deed</a>, <a href="#">Watch List</a>, <a href="#">Tax Info</a></p>					
--	--	--	--	--	--

DOM = Days on Market, Occ. = Occupancy, FL = Floor Number