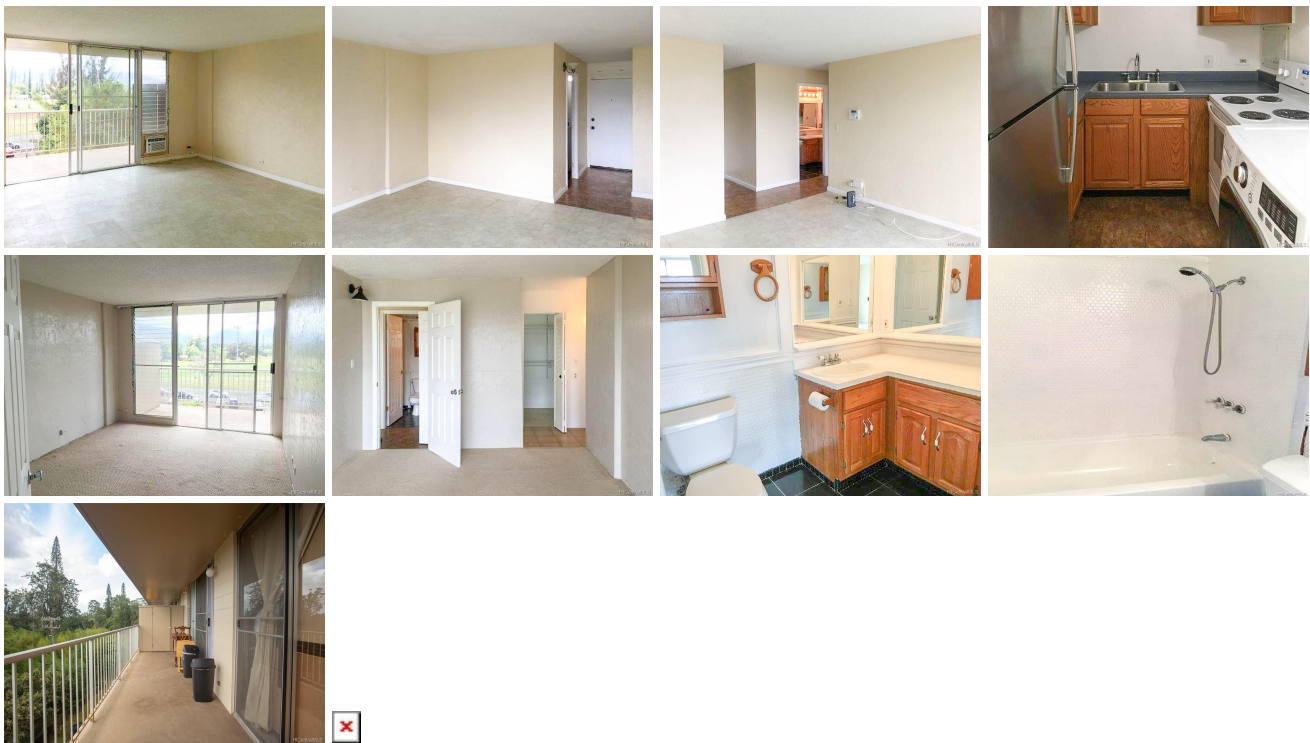


Kemoo by Lake 1830 Wilikina Drive Unit 508, Wahiawa 96786 * Kemoo by Lake * \$180,000

Sold Price: \$180,000	Sold Date: 09-13-2019	Sold Ratio: 100%
Beds: 1	MLS#: 201903081 , FS	Year Built: 1972
Bath: 1/0	Status: Sold	Remodeled: 2010
Living Sq. Ft.: 681	List Date & DOM: 01-26-2019 & 119	Total Parking: 1
Land Sq. Ft.: 63,815	Condition: Above Average	Assessed Value
Lanai Sq. Ft.: 187	Frontage:	Building: \$141,700
Sq. Ft. Other: 0	Tax/Year: \$33/2019	Land: \$52,600
Total Sq. Ft. 868	Neighborhood: Wilikina	Total: \$194,300
Maint./Assoc. \$380 / \$0	Flood Zone : Zone D - Tool	Stories / CPR: 8-14 / No
Parking: Assigned, Open - 1	Frontage:	
Zoning : 13 - A-3 High Density Apartment	View: Garden, Mountain	

Public Remarks: Back on Market! Great price for Fee Simple Condo on Oahu. Spacious floor plan with large master and walk in closet, 187 sf lanai. Unit includes major appliances, Refrigerator, stove, washer and dryer are in the unit. Right across from Schofield Barracks (commissary and additional amenities for military here) near Kemoo Farms, Lake Wilson, Wahiawa Town, Mililani Town, Beautiful North Shore beaches Building features security guard, cameras, bbq. Easy freeway access. **Sale Conditions:** None **Schools:** , , * [Request Showing](#), [Photos](#), [History](#), [Maps](#), [Deed](#), [Watch List](#), [Tax Info](#)



Address	Price	Bd & Bth	Living / Avg.	Land Avg.	Lanai	Occ.	FL	DOM
1830 Wilikina Drive 508	\$180,000	1 & 1/0	681 \$264	63,815 \$3	187	25%	5	119

Address	Tax Maint. Ass.	Assessed Land	Assessed Building	Assessed Total	Ratio	Year & Remodeled
1830 Wilikina Drive 508	\$33 \$380 \$0	\$52,600	\$141,700	\$194,300	93%	1972 & 2010

Address	Sold Price	Sold Date	Sold Ratio	Original Ratio	Sold Terms
1830 Wilikina Drive 508	\$180,000	09-13-2019	100%	100%	Conventional

[1830 Wilikina Drive 508](#) - MLS#: [201903081](#) - Back on Market! Great price for Fee Simple Condo on Oahu. Spacious floor plan with large master and walk in closet, 187 sf lanai. Unit includes major appliances, Refrigerator, stove, washer and dryer are in the unit. Right across from Schofield Barracks (commissary and additional amenities for military here) near Kemoo Farms, Lake Wilson, Wahiawa Town, Mililani Town, Beautiful North Shore beaches Building features security guard, cameras, bbq. Easy freeway access. **Region:** Central **Neighborhood:** Wilikina **Condition:** Above Average **Parking:** Assigned, Open - 1 **Total Parking:** 1 **View:** Garden, Mountain **Frontage:** **Pool:** **Zoning:** 13 - A-3 High Density Apartment **Sale Conditions:** None **Schools:** , , * [Request Showing](#), [Photos](#), [History](#), [Maps](#), [Deed](#), [Watch List](#), [Tax Info](#)

DOM = Days on Market, Occ. = Occupancy, FL = Floor Number