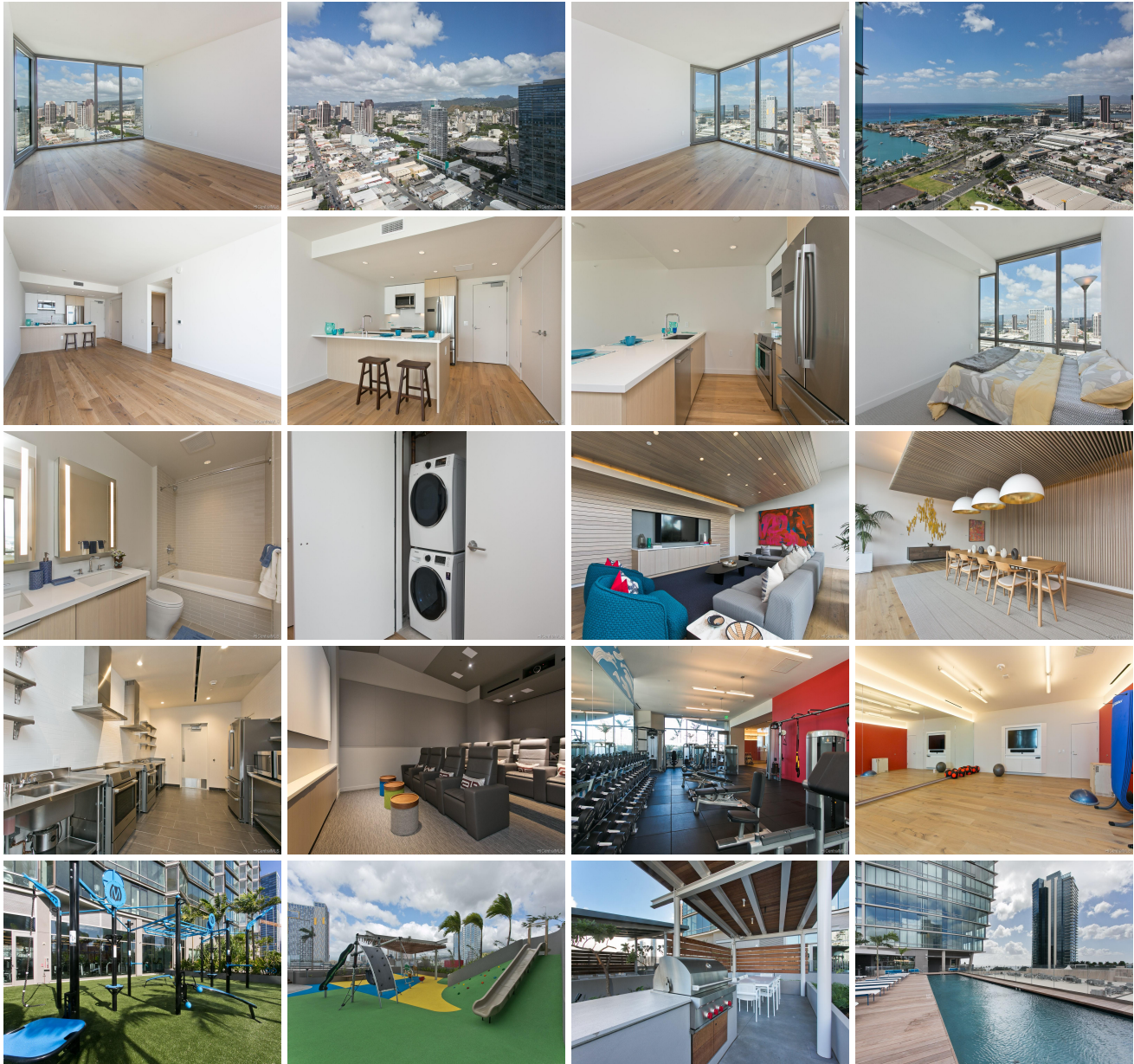


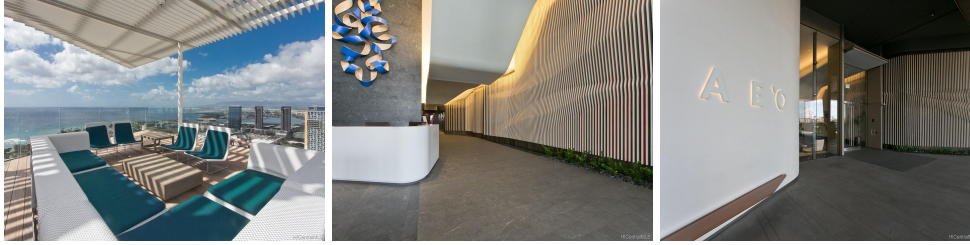
Ae'o 1001 Queen Street Unit 3209, Honolulu 96814 * Ae'o * \$998,000 * Originally \$1,038,000

Beds: 1	MLS#: 201903305, FS	Year Built: 2018
Bath: 1/0	Status: Cancelled	Remodeled:
Living Sq. Ft.: 692	List Date & DOM: 01-30-2019 & 61	Total Parking: 1
Land Sq. Ft.: 0	Condition: Excellent	Assessed Value
Lanai Sq. Ft.: 0	Frontage:	Building: \$63,100
Sq. Ft. Other: 0	Tax/Year: \$32/2018	Land: \$45,500
Total Sq. Ft. 692	Neighborhood: Kakaako	Total: \$108,600
Maint./Assoc. \$545 / \$0	Flood Zone : Zone AE - Tool	Stories / CPR: 21+ / No
Parking: Assigned, Covered - 1, Garage, Guest, Secured Entry	Frontage:	
Zoning : Kak - Kakaako Community Development Project	View: City, Coastline, Mountain, Ocean, Sunset	

Public Remarks: New Price! Best value in the building for this high floor 1/1/1 with spectacular ocean to mountain views. The 09 stack will continue to enjoy clear mountain views. Upscale kitchen, eat-in counter plus room for a dining table. Larger bathroom with double sink/medicine cabinets, large walk in closet, good storage. Use the super quiet central AC, or open up the windows for a fresh breeze. Just a few of the many amenities include the Sky Terrace, 2 pools, playground, theater, indoor and outdoor fitness center, and guest suites. The future rail station will be a couple blocks away, and Whole Foods is just downstairs (direct access via 2nd floor walkway). Ae'o is the newest building at the heart of the hot Kaka'ako neighborhood!

Sale Conditions: None **Schools:** [Kaahumanu](#), [Washington](#), [Mckinley](#) * [Request Showing](#), [Photos](#), [History](#), [Maps](#), [Deed](#), [Watch List](#), [Tax Info](#)





Address	Price	Bd & Bth	Living / Avg.	Land Avg.	Lanai	Occ.	FL	DOM
1001 Queen Street 3209	\$998,000	1 & 1/0	692 \$1,442	0 \$inf	0	0%	32	61

Address	Tax Maint. Ass.	Assessed Land	Assessed Building	Assessed Total	Ratio	Year & Remodeled
1001 Queen Street 3209	\$32 \$545 \$0	\$45,500	\$63,100	\$108,600	919%	2018 & NA

[1001 Queen Street 3209](#) - MLS#: [201903305](#) - Original price was \$1,038,000 - New Price! Best value in the building for this high floor 1/1/1 with spectacular ocean to mountain views. The 09 stack will continue to enjoy clear mountain views. Upscale kitchen, eat-in counter plus room for a dining table. Larger bathroom with double sink/medicine cabinets, large walk in closet, good storage. Use the super quiet central AC, or open up the windows for a fresh breeze. Just a few of the many amenities include the Sky Terrace, 2 pools, playground, theater, indoor and outdoor fitness center, and guest suites. The future rail station will be a couple blocks away, and Whole Foods is just downstairs (direct access via 2nd floor walkway). Ae'o is the newest building at the heart of the hot Kaka'ako neighborhood! **Region:** Metro **Neighborhood:** Kakaako **Condition:** Excellent **Parking:** Assigned, Covered - 1, Garage, Guest, Secured Entry **Total Parking:** 1 **View:** City, Coastline, Mountain, Ocean, Sunset **Frontage:** **Pool:** **Zoning:** Kak - Kakaako Community Development Project **Sale Conditions:** None **Schools:** [Kaahumanu](#), [Washington](#), [Mckinley](#) * [Request Showing](#), [Photos](#), [History](#), [Maps](#), [Deed](#), [Watch List](#), [Tax Info](#)

DOM = Days on Market, Occ. = Occupancy, FL = Floor Number