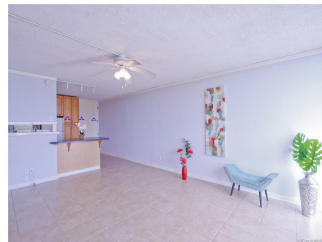
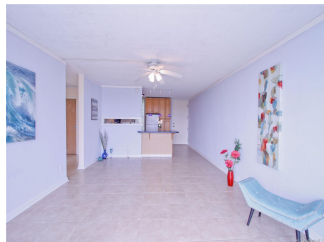


Valleyview Melemanu 95-2057 Waikalani Place Unit C403, Mililani 96789 * Valleyview**Melemanu * \$249,000 * Originally \$260,000**

Sold Price: \$249,000	Sold Date: 04-24-2019	Sold Ratio: 100%
Beds: 2	MLS#: 201903452 , FS	Year Built: 1973
Bath: 1/0	Status: Sold	Remodeled:
Living Sq. Ft.: 799	List Date & DOM: 01-31-2019 & 53	Total Parking: 1
Land Sq. Ft.: 175,024	Condition: Above Average	Assessed Value
Lanai Sq. Ft.: 97	Frontage:	Building: \$151,600
Sq. Ft. Other: 0	Tax/Year: \$75/2018	Land: \$86,800
Total Sq. Ft. 896	Neighborhood: Waipio Acres-waikalani Woodlands	Total: \$238,400
Maint./Assoc. \$583 / \$17	Flood Zone : Zone D - Tool	Stories / CPR: Three+ / No
Parking: Assigned, Guest, Street	Frontage:	
Zoning : 11 - A-1 Low Density Apartment	View: None	

Public Remarks: Hurry, this unit won't last. Enjoy the peaceful days at Valleyview, breezes and beautiful sunsets. The 4th floor C building has unobstructed views and privacy. The kitchen has built in extra storage, washer & dryer, dishwasher, stove & microwave. The large counter top is made to host many gatherings and lots of laughs. Freshly painted living room and bathroom expands the space. VA financing approved, close to Wheeler and Schofield. A must see! **Sale Conditions:** None

Schools: [Kipapa](#), [Mililani](#), [Mililani](#) * [Request Showing](#), [Photos](#), [History](#), [Maps](#), [Deed](#), [Watch List](#), [Tax Info](#)



Address	Price	Bd & Bth	Living / Avg.	Land Avg.	Lanai	Occ.	FL	DOM
95-2057 Waikalani Place C403	\$249,000	2 & 1/0	799 \$312	175,024 \$1	97	79%	4	53

Address	Tax Maint. Ass.	Assessed Land	Assessed Building	Assessed Total	Ratio	Year & Remodeled
95-2057 Waikalani Place C403	\$75 \$583 \$17	\$86,800	\$151,600	\$238,400	104%	1973 & NA

Address	Sold Price	Sold Date	Sold Ratio	Original Ratio	Sold Terms
95-2057 Waikalani Place C403	\$249,000	04-24-2019	100%	96%	Conventional

[95-2057 Waikalani Place C403](#) - MLS#: [201903452](#) - Original price was \$260,000 - Hurry, this unit won't last. Enjoy the peaceful days at Valleyview, breezes and beautiful sunsets. The 4th floor C building has unobstructed views and privacy. The kitchen has built in extra storage, washer & dryer, dishwasher, stove & microwave. The large counter top is made to host many gatherings and lots of laughs. Freshly painted living room and bathroom expands the space. VA financing approved, close to Wheeler and Schofield. A must see! **Region:** Central **Neighborhood:** Waipio Acres-waikalani Woodlands **Condition:** Above Average **Parking:** Assigned, Guest, Street **Total Parking:** 1 **View:** None **Frontage:** Pool: **Zoning:** 11 - A-1 Low Density Apartment **Sale Conditions:** None **Schools:** [Kipapa](#), [Mililani](#), [Mililani](#) * [Request Showing](#), [Photos](#), [History](#), [Maps](#), [Deed](#), [Watch List](#), [Tax Info](#)

DOM = Days on Market, Occ. = Occupancy, FL = Floor Number