

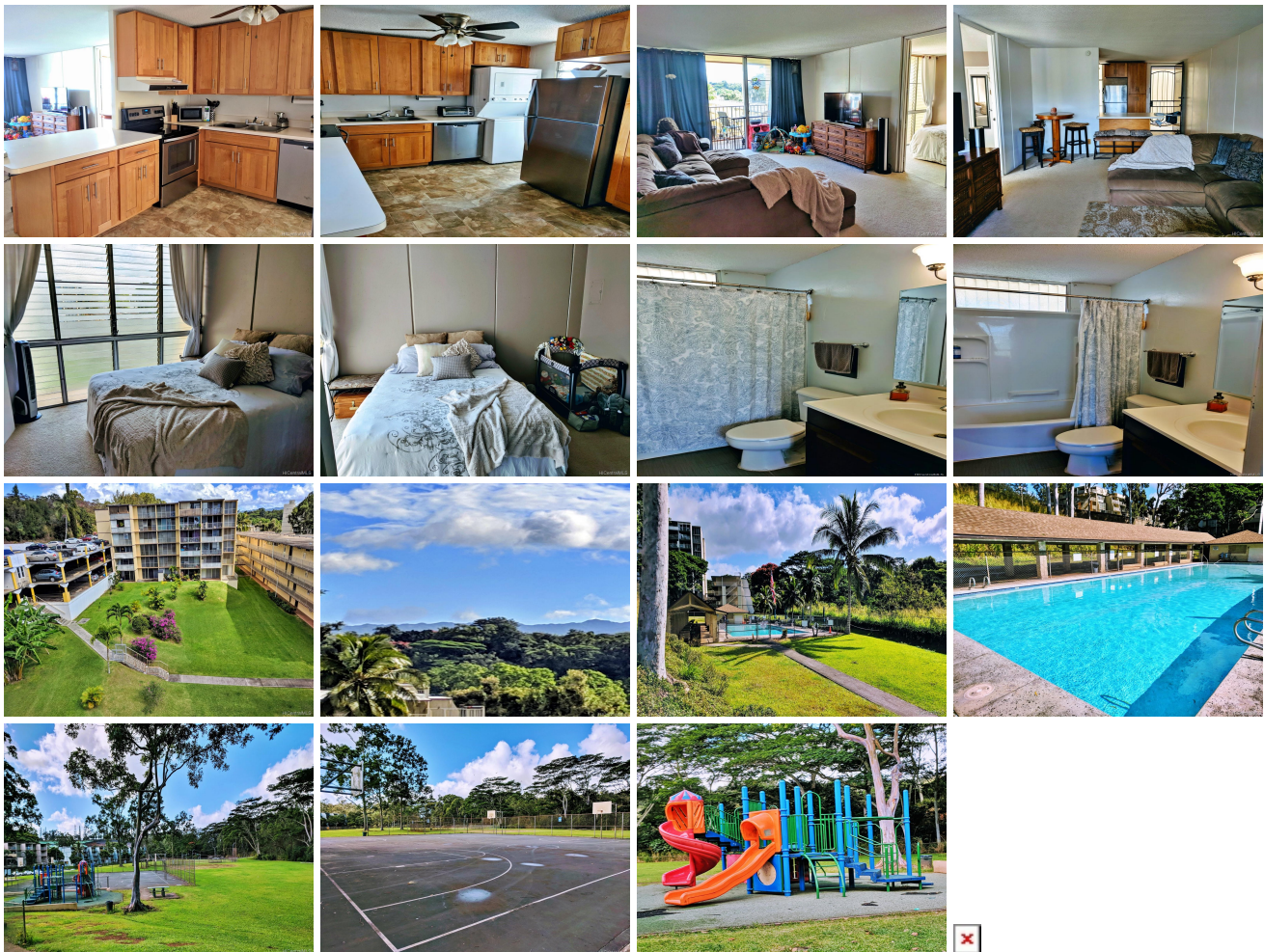
Ridgecrest-Melemanu 95-2048 Waikalani Place Unit D503, Mililani 96789 * Ridgecrest-Melemanu * \$235,000

Sold Price: \$230,000	Sold Date: 04-05-2019	Sold Ratio: 98%
Beds: 1	MLS#: 201904095, FS	Year Built: 1973
Bath: 1/0	Status: Sold	Remodeled: 2014
Living Sq. Ft.: 607	List Date & DOM: 02-09-2019 & 11	Total Parking: 2
Land Sq. Ft.: 249,076	Condition: Above Average	Assessed Value
Lanai Sq. Ft.: 0	Frontage:	Building: \$59,000
Sq. Ft. Other: 0	Tax/Year: \$54/2019	Land: \$126,900
Total Sq. Ft. 607	Neighborhood: Waipio Acres-waikalani Woodlands	Total: \$185,900
Maint./Assoc. \$379 / \$0	Flood Zone : Zone D - Tool	Stories / CPR: 4-7 / No
Parking: Assigned, Covered - 1, Guest, Open - 1	Frontage:	

[Zoning](#): **11 - A-1 Low Density Apartment**

View: **Garden**

Public Remarks: Here's your chance to live close to EVERYTHING! Great investment property or first home! Nicely kept, cool and rarely available corner unit. Spacious kitchen comes w/dishwasher. Washer/dryer accessibly placed in the kitchen. Living area has lots of natural light that opens to the lanai, overlooking the courtyard. Large walk-in closet. Well-maintained association w/low fee. Pet-friendly building features resident manager, security cameras, guest parking, fruit trees, pool, rec area, & more. Remodeled in 2014, updated appliances, light fixtures, bathtub, and washer/dryer. Conveniently located to military bases. Walking distance to bus stop, shopping & park. Great school districts. A Must See! View Large Photos at <http://bit.ly/OahuRE296> **Sale Conditions:** None **Schools:** , , * [Request Showing](#), [Photos](#), [History](#), [Maps](#), [Deed](#), [Watch List](#), [Tax Info](#)



Address	Price	Bd & Bth	Living / Avg.	Land Avg.	Lanai	Occ.	FL	DOM
95-2048 Waikalani Place D503	\$235,000	1 & 1/0	607 \$387	249,076 \$1	0	53%	5	11

Address	Tax Maint. Ass.	Assessed Land	Assessed Building	Assessed Total	Ratio	Year & Remodeled
95-2048 Waikalani Place D503	\$54 \$379 \$0	\$126,900	\$59,000	\$185,900	126%	1973 & 2014

Address	Sold Price	Sold Date	Sold Ratio	Original Ratio	Sold Terms
95-2048 Waikalani Place D503	\$230,000	04-05-2019	98%	98%	VA

[95-2048 Waikalani Place D503](#) - MLS#: [201904095](#) - Here's your chance to live close to EVERYTHING! Great investment property or first home! Nicely kept, cool and rarely available corner unit. Spacious kitchen comes w/dishwasher. Washer/dryer accessibly placed in the kitchen. Living area has lots of natural light that opens to the lanai, overlooking the courtyard. Large walk-in closet. Well-maintained association w/low fee. Pet-friendly building features resident manager, security cameras, guest parking, fruit trees, pool, rec area, & more. Remodeled in 2014, updated appliances, light fixtures, bathtub, and washer/dryer. Conveniently located to military bases. Walking distance to bus stop, shopping & park. Great school districts. A Must See! View Large Photos at <http://bit.ly/OahuRE296> **Region:** Central **Neighborhood:** Waipio Acres-waikalani Woodlands **Condition:** Above Average **Parking:** Assigned, Covered - 1, Guest, Open - 1 **Total Parking:** 2 **View:** Garden **Frontage:** **Pool:** **Zoning:** 11 - A-1 Low Density Apartment **Sale Conditions:** None **Schools:** , , * [Request Showing](#), [Photos](#), [History](#), [Maps](#), [Deed](#), [Watch List](#), [Tax Info](#)

DOM = Days on Market, Occ. = Occupancy, FL = Floor Number