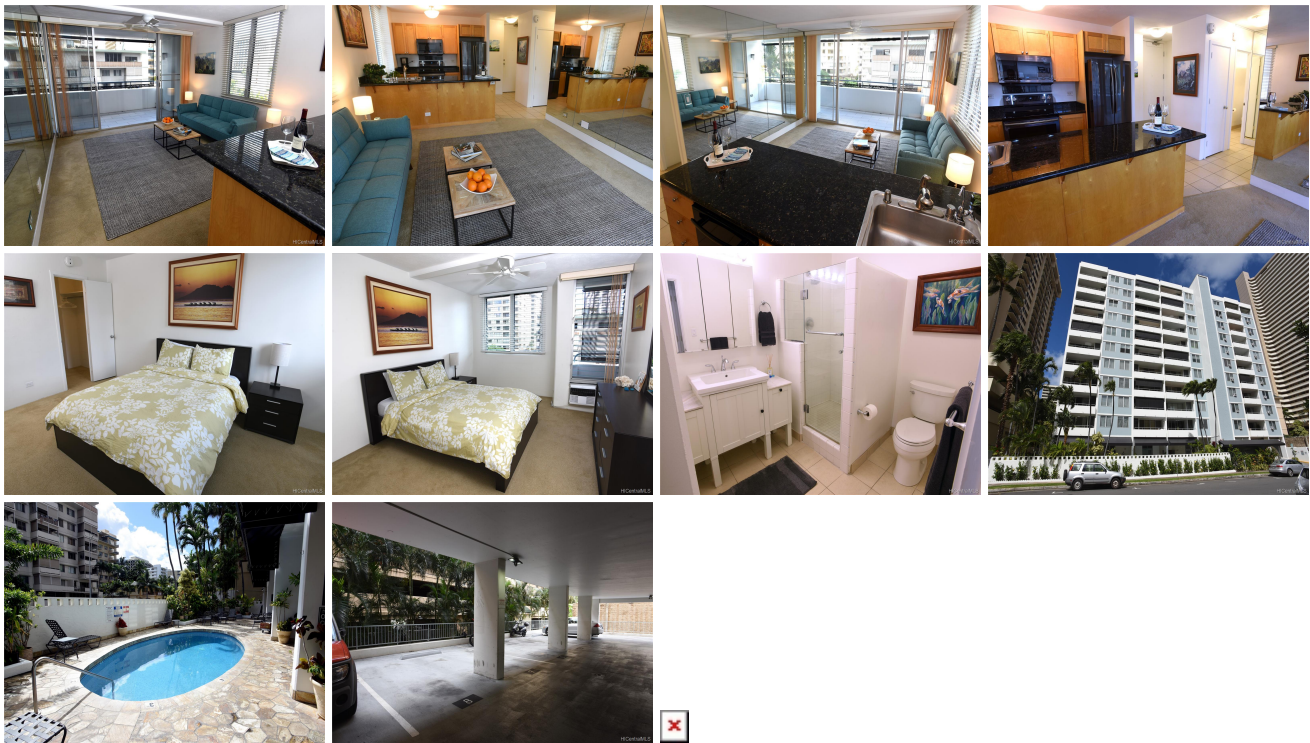


# **Kaiolu Sunrise 430 Kaiolu Street Unit 708, Honolulu 96815 \* Kaiolu Sunrise \* \$410,000**

Sold Price: \$410,000	Sold Date: 05-30-2019	Sold Ratio: 100%
Beds: <b>1</b>	MLS#: <b>201904336, FS</b>	Year Built: <b>1961</b>
Bath: <b>1/0</b>	Status: <b>Sold</b>	Remodeled: <b>2019</b>
Living Sq. Ft.: <b>625</b>	List Date & DOM: <b>02-12-2019 &amp; 64</b>	Total Parking: <b>1</b>
Land Sq. Ft.: <b>0</b>	Condition: <b>Above Average</b>	<a href="#">Assessed Value</a>
Lanai Sq. Ft.: <b>105</b>	Frontage: <b>Other</b>	Building: <b>\$325,300</b>
Sq. Ft. Other: <b>0</b>	Tax/Year: <b>\$109/2018</b>	Land: <b>\$52,400</b>
Total Sq. Ft. <b>730</b>	Neighborhood: <b>Waikiki</b>	Total: <b>\$377,700</b>
Maint./Assoc. <b>\$534 / \$0</b>	<a href="#">Flood Zone</a> : <b>Zone AO - Tool</b>	Stories / CPR: <b>8-14 / No</b>
Parking: <b>Assigned</b>	Frontage: <b>Other</b>	
<a href="#">Zoning</a> : <b>X2 - Apartment Precinct</b>	View: <b>None</b>	

**Public Remarks:** OH 3/20 11-3pm MUST see this 1 BR/1 BA corner unit in Kaiolu Sunrise, located just around the corner from the new Ritz Carlton Residences. Apt. is move in ready, with recently updated Samsung appliances 2018, an updated bathroom, tiled lanai & sunshade to block out the morning light. Unit has its own assigned & secured parking stall. Ceiling fans located in the living room and bedroom to keep you cool, as well as an A/C unit for those extra muggy summer months. Well maintained and secure building with new fire alarm and smoke detection systems, heated pool with gas grill area and kitchenette, surfboard, stand up & bike storage. Don't miss this opportunity to own in the heart of Waikiki, just two blocks from shopping, dining & beautiful beaches. (\$48 mo. other fee end 2020 for new windows) **Sale Conditions:** None **Schools:** [Jefferson](#), [Washington](#), [Kaimuki](#) \* [Request Showing](#), [Photos](#), [History](#), [Maps](#), [Deed](#), [Watch List](#), [Tax Info](#)



Address	Price	Bd & Bth	Living / Avg.	Land   Avg.	Lanai	Occ.	FL	DOM
<a href="#">430 Kaiolu Street 708</a>	<a href="#">\$410,000</a>	1 & 1/0	625   \$656	0   \$inf	105	23%	7	64

Address	Tax   Maint.   Ass.	Assessed Land	Assessed Building	Assessed Total	Ratio	Year & Remodeled
<a href="#">430 Kaiolu Street 708</a>	\$109   \$534   \$0	\$52,400	\$325,300	\$377,700	109%	1961 & 2019

Address	Sold Price	Sold Date	Sold Ratio	Original Ratio	Sold Terms
<a href="#">430 Kaiolu Street 708</a>	\$410,000	05-30-2019	100%	100%	Cash

[430 Kaiolu Street 708](#) - MLS#: [201904336](#) - OH 3/20 11-3pm MUST see this 1 BR/1 BA corner unit in Kaiolu Sunrise, located just around the corner from the new Ritz Carlton Residences. Apt. is move in ready, with recently updated Samsung appliances 2018, an updated bathroom, tiled lanai & sunshade to block out the morning light. Unit has its own assigned & secured parking stall. Ceiling fans located in the living room and bedroom to keep you cool, as well as an A/C unit for those extra muggy summer months. Well maintained and secure building with new fire alarm and smoke detection systems, heated pool with gas grill area and kitchenette, surfboard, stand up & bike storage. Don't miss this opportunity to own in the heart of Waikiki, just two blocks from shopping, dining & beautiful beaches. (\$48 mo. other fee end 2020 for new windows)  
**Region:** Metro **Neighborhood:** Waikiki **Condition:** Above Average **Parking:** Assigned **Total Parking:** 1 **View:** None  
**Frontage:** Other **Pool:** Zoning: X2 - Apartment Precinct **Sale Conditions:** None **Schools:** [Jefferson](#), [Washington](#), [Kaimuki](#) \*  
[Request Showing](#), [Photos](#), [History](#), [Maps](#), [Deed](#), [Watch List](#), [Tax Info](#)

DOM = Days on Market, Occ. = Occupancy, FL = Floor Number