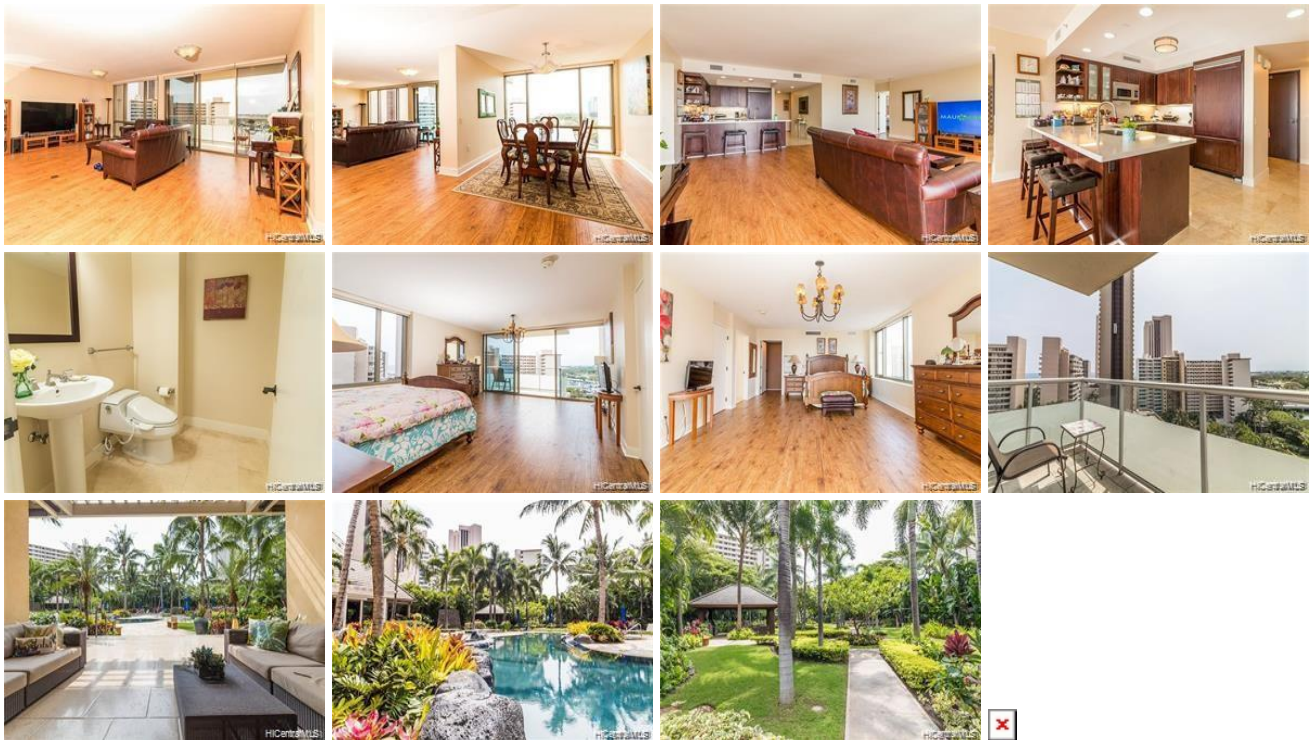


## The Watermark, Honolulu 96815 \* The Watermark \* \$2,295,000 \* Originally \$2,399,000

|  |   |                                |
|--|---|--------------------------------|
| Beds: <b>3</b>   | MLS#: <b>201904602</b> , FS                         | Year Built: <b>2008</b>        |
| Bath: <b>3/1</b>   | Status: <b>Cancelled</b>                            | Remodeled: <b>2017</b>         |
| Living Sq. Ft.: <b>2,198</b>                                 | List Date & DOM: <b>02-16-2019 &amp; 160</b>        | Total Parking: <b>3</b>        |
| Land Sq. Ft.: <b>0</b>                                       | Condition: <b>Excellent</b>                         | <a href="#">Assessed Value</a> |
| Lanai Sq. Ft.: <b>144</b>                                    | Frontage:   | Building: <b>\$2,012,300</b>   |
| Sq. Ft. Other: <b>0</b>                                      | Tax/Year: <b>\$1,440/2018</b>                       | Land: <b>\$391,900</b>         |
| Total Sq. Ft. <b>2,342</b>                                   | Neighborhood: <b>Waikiki</b>                        | Total: <b>\$2,404,200</b>      |
| Maint./Assoc. <b>\$2,212 / \$0</b>                           | <a href="#">Flood Zone</a> : <b>Zone AE - Tool</b>  | Stories / CPR: <b>21+ / No</b> |
| Parking: <b>Assigned, Covered - 3+, Guest, Secured Entry</b> | Frontage:   |                                |
| <a href="#">Zoning</a> : <b>X2 - Apartment Precinct</b>      | View: <b>Coastline, Marina/Canal, Ocean, Sunset</b> |                                |

**Public Remarks:** HUGE PRICE REDUCTION!!! This unit features Ocean View, Marina View, Garden View and Ala Wai Canal View. The unit is cul de sac, which has three direction's (east, south & west) windows or lanais with much cooler and more breeze. Newly upgraded with bamboo floor throughout the unit and upgraded Lanai floor with luxury tiles. The bathroom offers a deep soaking tub and BIDET system in every bathroom. The kitchen counter top has been upgraded with new touch. Designer upgraded includes wood flooring, closet systems and window coverings. **Sale Conditions:** None **Schools:** [Ala Wai](#), \* [Request Showing](#), [Photos](#), [History](#), [Maps](#), [Deed](#), [Watch List](#), [Tax Info](#)



| Address | Price              | Bd & Bth | Living / Avg.   | Land   Avg. | Lanai | Occ. | FL | DOM |
|---------|--------------------|----------|-----------------|-------------|-------|------|----|-----|
|         | <b>\$2,295,000</b> | 3 & 3/1  | 2,198   \$1,044 | 0   \$inf   | 144   | 83%  | 12 | 160 |

| Address | Tax   Maint.   Ass.     | Assessed Land | Assessed Building | Assessed Total | Ratio | Year & Remodeled |
|---------|-------------------------|---------------|-------------------|----------------|-------|------------------|
|         | \$1,440   \$2,212   \$0 | \$391,900     | \$2,012,300       | \$2,404,200    | 95%   | 2008 & 2017      |

- MLS#: [201904602](#) - Original price was \$2,399,000 - HUGE PRICE REDUCTION!!! This unit features Ocean View, Marina View, Garden View and Ala Wai Canal View. The unit is cul de sac, which has three direction's (east, south & west) windows or lanais with much cooler and more breeze. Newly upgraded with bamboo floor throughout the unit and upgraded Lanai floor with luxury tiles. The bathroom offers a deep soaking tub and BIDET system in every bathroom. The kitchen counter top has been upgraded with new touch. Designer upgraded includes wood flooring, closet systems and window coverings. **Region:** Metro **Neighborhood:** Waikiki **Condition:** Excellent **Parking:** Assigned, Covered - 3+, Guest, Secured Entry **Total Parking:** 3 **View:** Coastline, Marina/Canal, Ocean, Sunset **Frontage:** **Pool:** **Zoning:** X2 - Apartment Precinct **Sale Conditions:** None **Schools:** [Ala Wai](#), \* [Request Showing](#), [Photos](#), [History](#), [Maps](#), [Deed](#), [Watch List](#), [Tax Info](#)

DOM = Days on Market, Occ. = Occupancy, FL = Floor Number