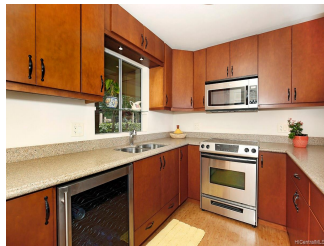


**Poha Kea Point 3 46-159 Meheanu Loop Unit 3243, Kaneohe 96744 \* Poha Kea Point 3 \***

**\$638,000**

Sold Price: \$638,000	Sold Date: 05-10-2019	Sold Ratio: 100%
Beds: <b>2</b>	MLS#: <b>201904829, FS</b>	Year Built: <b>1986</b>
Bath: <b>2/0</b>	Status: <b>Sold</b>	Remodeled: <b>2008</b>
Living Sq. Ft.: <b>871</b>	List Date & DOM: <b>03-13-2019 &amp; 9</b>	Total Parking: <b>2</b>
Land Sq. Ft.: <b>669,517</b>	Condition: <b>Above Average</b>	<a href="#">Assessed Value</a>
Lanai Sq. Ft.: <b>146</b>	Frontage: <b>Other</b>	Building: <b>\$414,500</b>
Sq. Ft. Other: <b>0</b>	Tax/Year: <b>\$143/2018</b>	Land: <b>\$158,100</b>
Total Sq. Ft. <b>1,017</b>	Neighborhood: <b>Lilipuna</b>	Total: <b>\$572,600</b>
Maint./Assoc. <b>\$454 / \$326</b>	<a href="#">Flood Zone</a> : <b>Zone X - Tool</b>	Stories / CPR: <b>One / No</b>
Parking: <b>Assigned, Covered - 1, Open - 1</b>	Frontage: <b>Other</b>	
<a href="#">Zoning</a> : <b>03 - R10 - Residential District</b>	View: <b>Coastline, Mountain, Ocean, Sunrise, Sunset</b>	

**Public Remarks:** THIS IS THE ONE! All the views and no stairs to climb. Single level 2bed/2bath unit w/unobstructed gorgeous views of Ko'olau Mtn Range to Kualoa Ranch/Chinaman's Hat, together with the ever-changing, sparkling turquoise ocean waters of Kaneohe Bay. Truly a rare find for any view-offering townhome! Only four steps leading to this direct walk-in unit, which is one level & views from all rooms. This unit has been meticulously cared for and is move-in ready. Two parking stalls & storage locker. Poha Kea Point is comprised of a 55-acre complex which includes swimming pools, tennis courts, walking paths, BBQ areas, security patrol round the clock & is pet friendly! This complex offers amenities like no other on the Windward side. A must-see unit. **Sale Conditions:** None **Schools:** [Heeia](#), [King](#), [Castle](#) \* [Request Showing](#), [Photos](#), [History](#), [Maps](#), [Deed](#), [Watch List](#), [Tax Info](#)



Address	Price	Bd & Bth	Living / Avg.	Land   Avg.	Lanai	Occ.	FL	DOM
<a href="#">46-159 Meheanu Loop 3243</a>	<a href="#">\$638,000</a>	2 & 2/0	871   \$732	669,517   \$1	146	53%	5	9

Address	Tax   Maint.   Ass.	Assessed Land	Assessed Building	Assessed Total	Ratio	Year & Remodeled
<a href="#">46-159 Meheanu Loop 3243</a>	\$143   \$454   \$326	\$158,100	\$414,500	\$572,600	111%	1986 & 2008

Address	Sold Price	Sold Date	Sold Ratio	Original Ratio	Sold Terms
<a href="#">46-159 Meheanu Loop 3243</a>	\$638,000	05-10-2019	100%	100%	Conventional

[46-159 Meheanu Loop 3243](#) - MLS#: [201904829](#) - THIS IS THE ONE! All the views and no stairs to climb. Single level 2bed/2bath unit w/unobstructed gorgeous views of Ko'olau Mtn Range to Kualoa Ranch/Chinaman's Hat, together with the ever-changing, sparkling turquoise ocean waters of Kaneohe Bay. Truly a rare find for any view-offering townhome! Only four steps leading to this direct walk-in unit, which is one level & views from all rooms. This unit has been meticulously cared for and is move-in ready. Two parking stalls & storage locker. Poha Kea Point is comprised of a 55-acre complex which includes swimming pools, tennis courts, walking paths, BBQ areas, security patrol round the clock & is pet friendly! This complex offers amenities like no other on the Windward side. A must-see unit. **Region:** Kaneohe **Neighborhood:** Lilipuna **Condition:** Above Average **Parking:** Assigned, Covered - 1, Open - 1 **Total Parking:** 2 **View:** Coastline, Mountain, Ocean, Sunrise, Sunset **Frontage:** Other **Pool:** **Zoning:** 03 - R10 - Residential District **Sale Conditions:** None **Schools:** [Heeia](#), [King](#), [Castle](#) \* [Request Showing](#), [Photos](#), [History](#), [Maps](#), [Deed](#), [Watch List](#), [Tax Info](#)

DOM = Days on Market, Occ. = Occupancy, FL = Floor Number